



# INSTALLATION INSTRUCTIONS

## REAR CARGO STORAGE CAGE #073

Please read, complete, and return the enclosed warranty registration card to activate your warranty.

### PARTS CHECKLIST



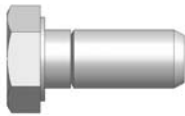
(4) 5/16 x 11/4" BOLTS



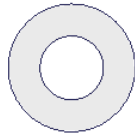
(4) 5/16 NYLOCK NUTS

#### For office use only

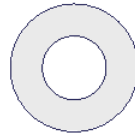
- (2) Gas Springs
  - Pushbutton
  - Latch
  - Rubber seal
  - 1" Tape
  - 2" Tape
  - Shipping package
  - Rear Bracket
  - Front Bracket
  - Warranty card
  - Key for lock
  - Color code
- Checked by \_\_\_\_\_



(2) 5/16 x 3/4" BOLTS



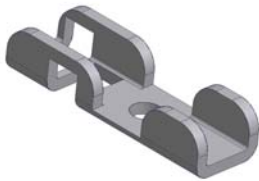
(4) 5/16 NYLON WASHERS



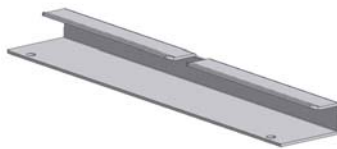
(6) 5/16" WASHERS



(2) 10-32 NUTS



(2) T-LATCHES



REAR BRACKET



FRONT BRACKET

### TOOLS NEEDED

- Electric drill
- 3/8" Drill bit
- Marker or pencil
- Utility knife
- 1/2" Socket and ratchet
- 1/2" Wrench
- Silicone sealant (Recommended)

**PLEASE READ ALL INSTRUCTIONS THOROUGHLY BEFORE STARTING INSTALLATION.**

1. Place the cage in the vehicle in the desired mounting location. Place the rear-mounting bracket around the rear bottom tube on the storage cage. (SEE FIGURE 1)

**NOTE: Make sure the tailgate will close and the soft-top will fold down. Make sure that the front of the cage, where the front mounting bracket will be mounted, is on a surface that the bracket can be mounted to via drilling two holes and fastening with the mounting hardware. (HOLES 1 AND 2 IN FIGURE 2)**

2. Using a marker or pencil mark the (2) spots under the (2) holes on the Rear Mounting bracket where the mounting holes will be drilled. (HOLES 3 AND 4 IN FIGURE 2)

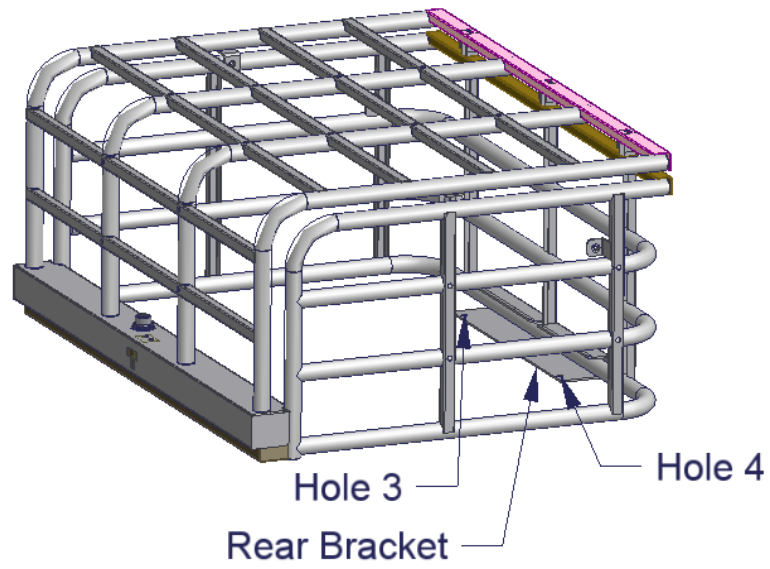
**WARNING! Make sure that there is nothing under the vehicle that will be damaged by the drill bit when drilling. IN MOST VEHICLES THERE IS A GAS TANK UNDERNEATH THE REAR OF THE VEHICLE. THE GAS TANK MAY HAVE TO BE LOWERED TO INSTALL THE MOUNTING BOLTS. PLEASE CONSULT VEHICLE OWNERS MANUAL FOR INSTRUCTIONS ON LOWERING THE GAS TANK.**

3. Remove the cage and Rear Mounting bracket. If applicable, cut the carpet at the (2) marked spots. Using a 3/8" drill bit, drill out the (2) marked spots on the floor.
4. It is recommended to use silicone sealant in any holes drilled in the vehicle to prevent rusting.
5. There are two different lengths of bolts to choose from for fastening down the Rear Bracket. If the cage is being mounted on a Tuffy drawer use the (2) 5/16 x 3/4" bolts, (4) 5/16" washers and (2) 5/16" nylock nuts. For all other applications fasten the Rear Mounting Bracket using (2) 5/16 x 1 1/4 bolts, (4) 5/16" washers, and (2) 5/16" nylock nuts. (HOLES 3 AND 4 IN FIGURE 2)
6. Place the Cage in the vehicle by sliding it into the Rear Mounting Bracket.
7. Open the lid **(The lid will be pushed open by the (2) gas springs, make sure the opening lid will not damage the vehicle. Keep clear of the lid while it is opening to avoid injury)**
8. Place the Front Mounting bracket under the cage by guiding the (2) studs on the mounting bracket into the corresponding holes in the bottom of the cage. (SEE FIGURE 2)
9. Make sure the cage is positioned in its desired location. Using a marker or pencil, mark the spot on the floor matching up with the (2) mounting holes in the Front Mounting Bracket. (HOLES 1 AND 2 IN FIGURE 2)

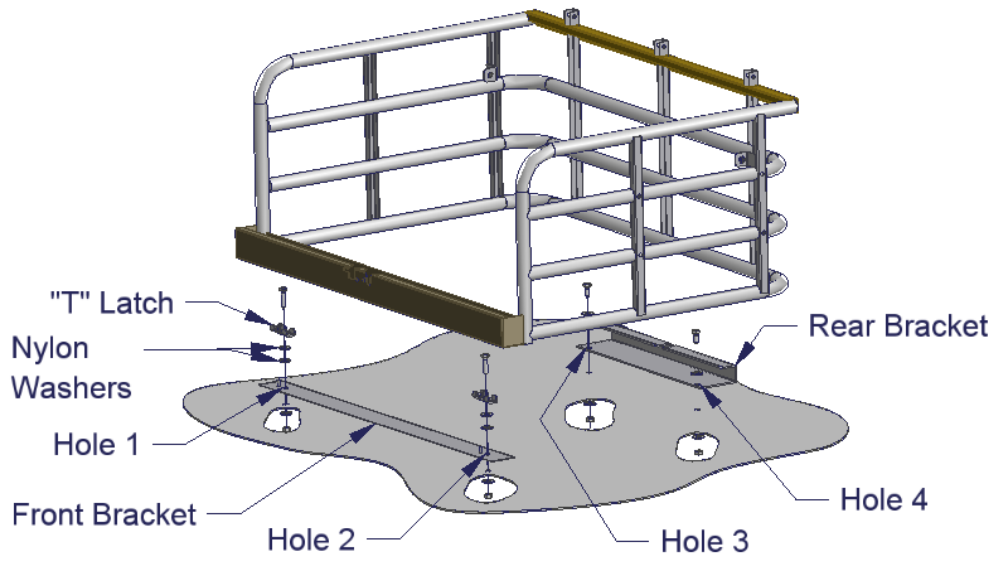
**WARNING! Make sure that there is nothing under the vehicle that will be damaged by the drill bit when drilling. IN MOST VEHICLES THERE IS A GAS TANK UNDERNEATH THE REAR OF THE VEHICLE. THE GAS TANK MAY HAVE TO BE LOWERED TO INSTALL THE MOUNTING BOLTS. PLEASE CONSULT VEHICLE OWNERS MANUAL FOR INSTRUCTIONS ON LOWERING THE GAS TANK.**

10. Remove the cage and Front Mounting bracket. If applicable, cut the carpet at the (2) marked spots. Using a 3/8" drill bit, drill out the (2) marked spots on the floor.
11. Remove the cage and fasten the Front Mounting Bracket through the (2) holes previously drilled using the (2) T-Latches, (2) 5/16 x 1 1/4" bolts, (4) 5/16" Nylon Washers, (2) 5/16" Washers, and (2) 5/16 Nylock Nuts. (HOLES 1 AND 2 IN FIGURE 2)
12. Slide the cage into the Rear Mounting Bracket and over the Front Mounting bracket. Turn the T-Latches to secure the cage down.
13. The T-Latches should hold the cage down tight, if they are loose, remove one of the 5/16 nylon washers from each T-Latch fastener assembly and tighten until a snug fit is accomplished.
14. The 10-32 nuts should be tightened on the studs in the Front Mounting Bracket to keep the T-Latches from opening while driving.
15. Check lock operation

**FIGURE 1**



**FIGURE 2**



For Technical Support call 970-564-1762

## **ATTENTION:**

### ***FREQUENT LUBRICATION IS NECESSARY ON THE LOCKING SYSTEM***

The pushbutton lock contains an “O” ring seal to protect the interior from dust and water. If this mechanism is not lubricated regularly it will become difficult to operate and it may not return to its home position preventing the key from operating the lock. If this happens simply pull up on the pushbutton to manually bring it back to its home position. Lubricate the pushbutton with a light lubricant such as silicone spray. The pushbutton may have to be periodically disassembled and cleaned.