



Installation Instructions

Product: **Coil Spring Retainers**

Part Number: **PN 1600**

Application: **Jeep Wrangler JK, 2007+ (rear only)**

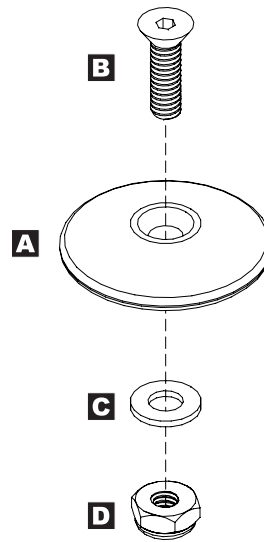
Welcome

CONGRATULATIONS on your purchase of new JKS Coil Spring Retainers! At JKS Manufacturing, we are committed to providing you with the best products available and your satisfaction is our first priority.

Tools Required

- Metric/Standard Socket Wrench Set
- 1/4" Allen Wrench

Parts

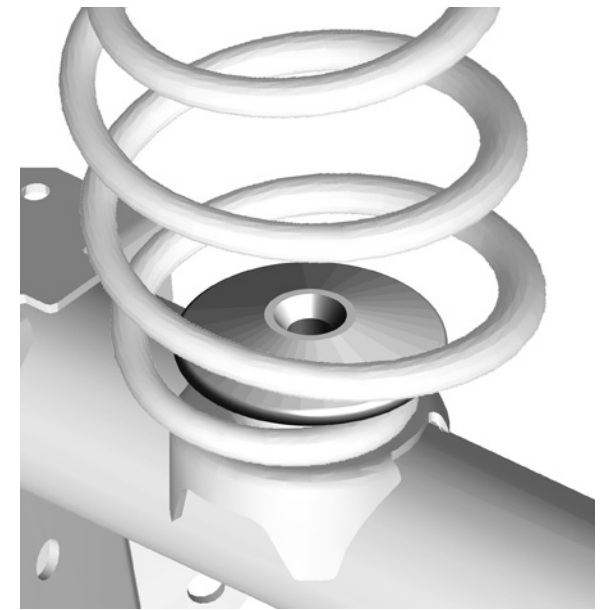


	DESCRIPTION	QTY
A	Coil Spring Retainer	2
B	7/16" x 1-1/2" Flathead Socket Screw	2
C	7/16" Flat Washer	2
D	7/16" Nylock Nut	2

Installation

1. INSERT COIL SPRING RETAINER

- Locate the 5/8" hole in the center of the lower spring mount on the rear axle.
- Place Coil Spring Retainer (A) inside the spring by sliding it between the coils. Make sure flat side of Coil Spring Retainer faces down.
- Position Coil Spring Retainer (A) directly on the lower spring mount as illustrated.



2. SECURE SPRING RETAINER TO LOWER SPRING MOUNT

- Insert 7/16" x 1-1/2" Flathead Socket Screw (B) into tapered hole in center of Coil Spring Retainer (A), and through the hole in the lower spring mount.
- From beneath spring mount, slide a 7/16" Flat Washer (C) onto threads of Flathead Socket Screw (B) and install the 7/16" Nylock Nut (D).
- Secure the Coil Spring Retainer (A) to the lower spring mount by tightening the mounting hardware. Use a 1/4" Allen Wrench to prevent the 7/16" x 1-1/2" Flathead Socket Screw (B) from spinning, and tighten the 7/16" Nylock Nut to 35 ft-lbs.
- Make sure the Coil Spring Retainer (A) is perfectly flat against the lower spring mount, and coil spring is secure.

© 2008 JKS Manufacturing, Inc & Aftermarketing, LLC
Revision Date 2/8/2008