



Equipped with *AEM DRYFLOW* Filter  
No Oil Required!

**Kit Part Number: 21-8315**

1991-1995 Jeep Cherokee 4.0L I6

CARB EO # Pending

1996-2001 Jeep Cherokee 4.0L I6

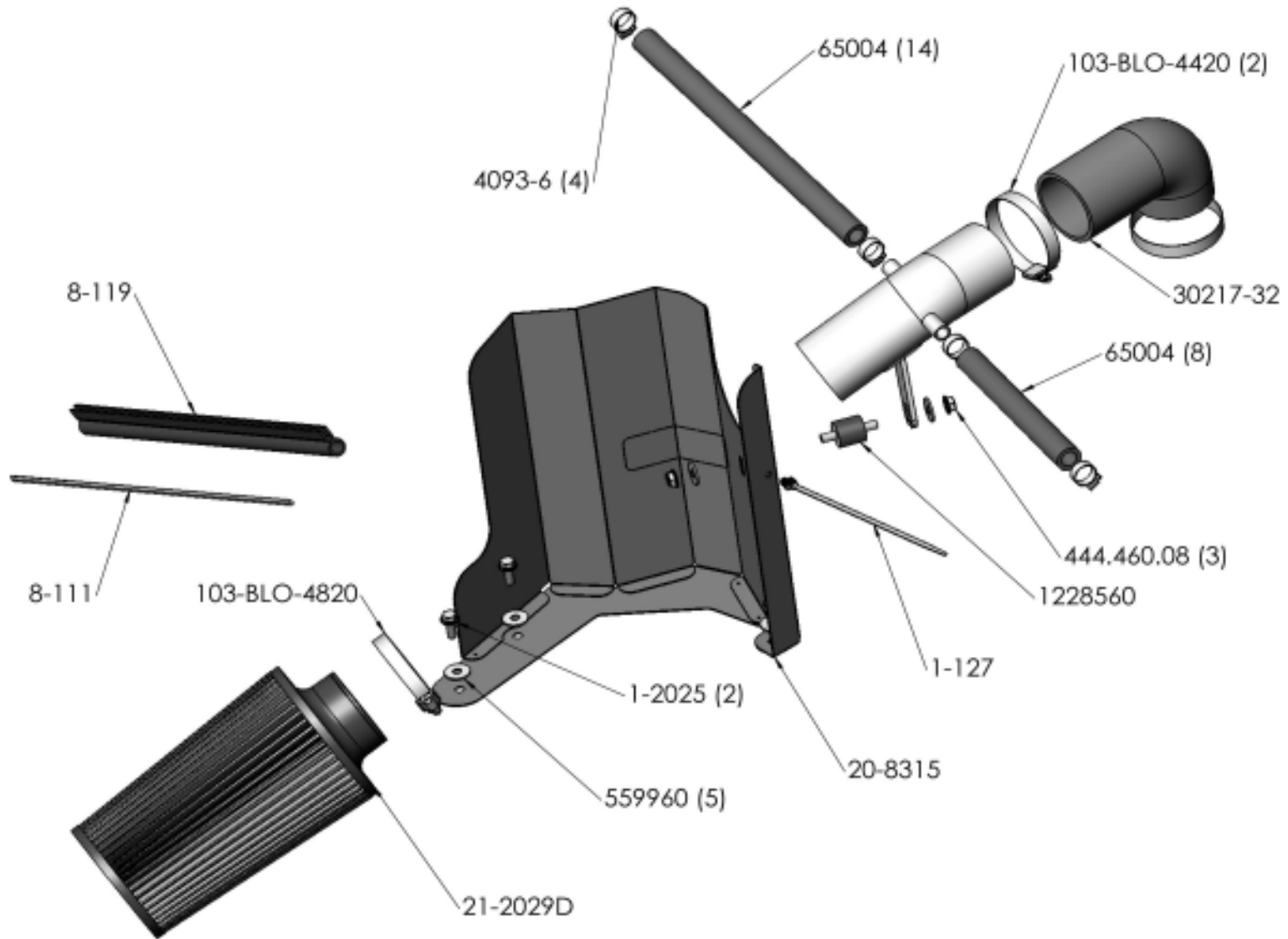
CARB EO # Pending

Brute Force Intake Systems that are pending an Executive Order number (EO#) relating to exemptions under Section 27156 of the Vehicle Code from the California Air Resource Board (CARB) are for off-road use only in California, which may never be used on public highways.

© 2007, Advanced Engine Management, Inc. AEM is a registered trademark of Advanced Engine Management, Inc. All rights reserved.



Advanced Engine Management Inc.  
2205 126<sup>th</sup> Street, Unit A  
Hawthorne, CA 90250  
Phone: 310.484.2322  
<http://www.aempower.com>



## BILL OF MATERIALS

<b>Part Number</b>	<b>Description</b>	<b>Quantity</b>
21-2029D	AEM Air Filter, 2.75" x 9"	1
2-83151P	Intake Pipe	1
20-8315	Heat Shield	1
1228560	Rubber Mount, M8 x 1"	1
559960	Washer, M8 Soft Mount	5
444.460.08	Nut, M8 Serrated	3
30217-32	Elbow,Silicone 2.75/2.75 x90	1
4093-6	Hose Clamp	4
103-BLO-4420	Hose Clamp, #44	2
103-BLO-4820	Hose Clamp, #48	1
1-2025	Bolt, M8 x 25	2
1-127	ZIP TIE,8" TREE PUSH-MNT	1
65004	Hose, 5/8" ID	14
65004	Hose, 5/8" ID	8
8-111	RUBBER EDGE TRIM	14
8-119	GASKET,SPONGE RUBBER	13
10-8315	Instructions	1
10-922Y	AEM Sticker, Yellow	2
10-922B	Emblem, Brute Force	1
8-104	Vac-Cap	1

## 1. Preparing Vehicle

- a) Make sure vehicle is parked on a level surface.
- b) Set parking brake.
- c) If engine has run in the past two hours let it cool down.
- d) Disconnect both negative battery terminals

## 2. Removal of Stock System



**a)** Stock intake system.



**b)** Remove the breather hose between the air filter housing and the valve cover.



**c)** Remove the rubber hose connecting the hard plastic charcoal canister hose to the air filter housing.



**d)** Loosen the hose clamp on the throttle body. This is done by simply pulling outward on the plastic hose clamp grips.



**e)** Unclip the three clamps securing the air filter housing lid to the base. Remove the lid and the inlet hose.



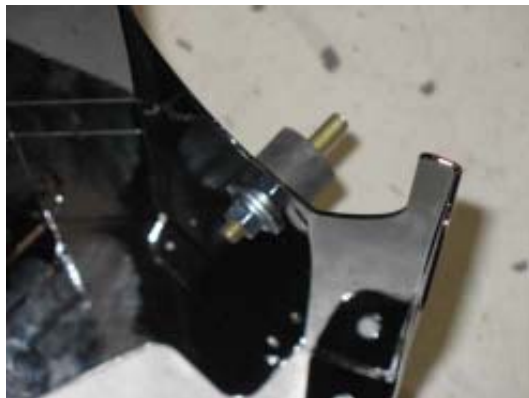
**f)** Remove the air filter from the housing. Remove the two bolts and the one nut from inside the filter housing. Lift up and remove the air filter housing base.



**g)** Stock intake system removed.

### 3. Installation of Brute Force Intake

**a)** When installing the intake system, do **not** completely tighten the hose clamps or mounting tab hardware until told to do so.



**b)** Install the supplied rubber mount onto the heat shield using an M8 washer and nut.



**c)** Install the tree mount zip-tie into the hole on the side of the heat shield as shown.





**d)** Install the rubber edge trim onto the top edge of the heat shield where the pipe passes through.



**e)** On Jeeps from 1996 on, remove the perforated pannel from the center of the heat shield by either cutting it out or punching it out. File the edges flat and use a small amount of paint to prevent rust.



**f)** Install the heat shield by aligning the stud in the inner fender with the corresponding hole on the heat shield. Secure using the supplied M8 nut, two M8 bolts, and three washers.



**g)** Install the 90 degree coupler onto the throttle body and secure using the supplied #48 hose clamps.



**h)** Slide the intake pipe into the elbow until the mounting bracket aligns with the rubber mount on the heat shield. Secure the pipe to the rubber mount using the remaining M8 washer and nut.



**i)** Install the hose between the valve cover breather nipple and the breather nipple on the engine side of the intake pipe. Secure using two of the supplied 1" hose clamps. Trim hose to fit.



**j)** Install the supplied breather hose between the hard plastic charcoal canister hose and the nipple on the driver side of the intake pipe. Secure using the remaining 1" hose clamps. Trim hose to fit.



**k)** Install the AEM Dryflow air filter onto the end of the pipe. Push the filter over the pipe until the stop in the filter is reached. Use a #48 clamp to secure the filter onto the intake pipe.



**Stock Intake System**



**AEM Brute Force Intake Installed**



#### 4. Re-assemble Vehicle

- a) Position the inlet pipes for the best fitment. Be sure that the pipes or any other components do not contact any part of the vehicle. Tighten the rubber mount, all bolts and hose clamps.
- b) Check for proper hood clearance. Re-adjust pipes if necessary and re-tighten them.
- c) Inspect the engine bay for any loose tools and check that all fasteners that were moved or removed are properly tightened.
- d) Start engine. Let car idle for 3 minutes. Perform a final inspection before driving the vehicle.

#### 5. Service and Maintenance

- a) It is recommended that you service your AEM Dryflow filter every 20,000 miles for optimum performance. Use AEM Dryflow cleaning kit part # 21-110.
- b) Use aluminum polish to clean your polished AEM Brute Force intake pipe.
- c) Use window cleaner to clean your powder coated AEM Brute Force intake pipe. **(NOTE: DO NOT USE Aluminum polish on a powder coated AEM Brute Force intake pipe)**

<p style="text-align: center;"><b>For technical inquiries</b> <b>e-mail us at</b> <b>tech@aempower.com</b> <b>or</b> <b>call us at</b> <b>310.484.2322 Option # 3</b></p>
---

#### AEM Air Intake System Warranty Policy

AEM warrants that its intake systems will last for the life of your vehicle. AEM will not honor this warranty due to mechanical damage (i.e. improper installation or fitment), damage from misuse, accidents or flying debris. AEM will not warrant its powdercoating if the finish has been cleaned with a hydrocarbon-based solvent. The powdercoating should only be cleaned with a mild soap and water solution. Proof of purchase of both the vehicle and AEM intake system is required for redemption of a warranty claim.

This warranty is limited to the repair or replacement of the AEM part. In no event shall this warranty exceed the original purchase price of the AEM part nor shall AEM be responsible for special, incidental or consequential damages or cost incurred due to the failure of this product. Warranty claims to AEM must be transportation prepaid and accompanied with dated proof of purchase. This warranty applies only to the original purchaser of product and is non-transferable. Improper use or installation, use for racing, accident, abuse, unauthorized repairs or alterations voids this warranty. AEM disclaims any liability for consequential damages due to breach of any written or implied warranty on all products manufactured by AEM. Warranty returns will only be accepted by AEM when accompanied by a valid Return Merchandise Authorization (RMA) number. Credit for defective products will be issued pending inspection. Product must be received by AEM within 30 days of the date RMA is issued.

If you have a warranty issue, please call (310) 484-2322, extension 203 and our customer service department will assist you. A proof of purchase is required for all AEM warranty claims.