



Equipped with *AEM DRYFLOW* Filter  
No oil required!

**Kit Part Number: 21-8309**

2004-2006 Jeep Liberty 3.7L V6

CARB EO # Pending

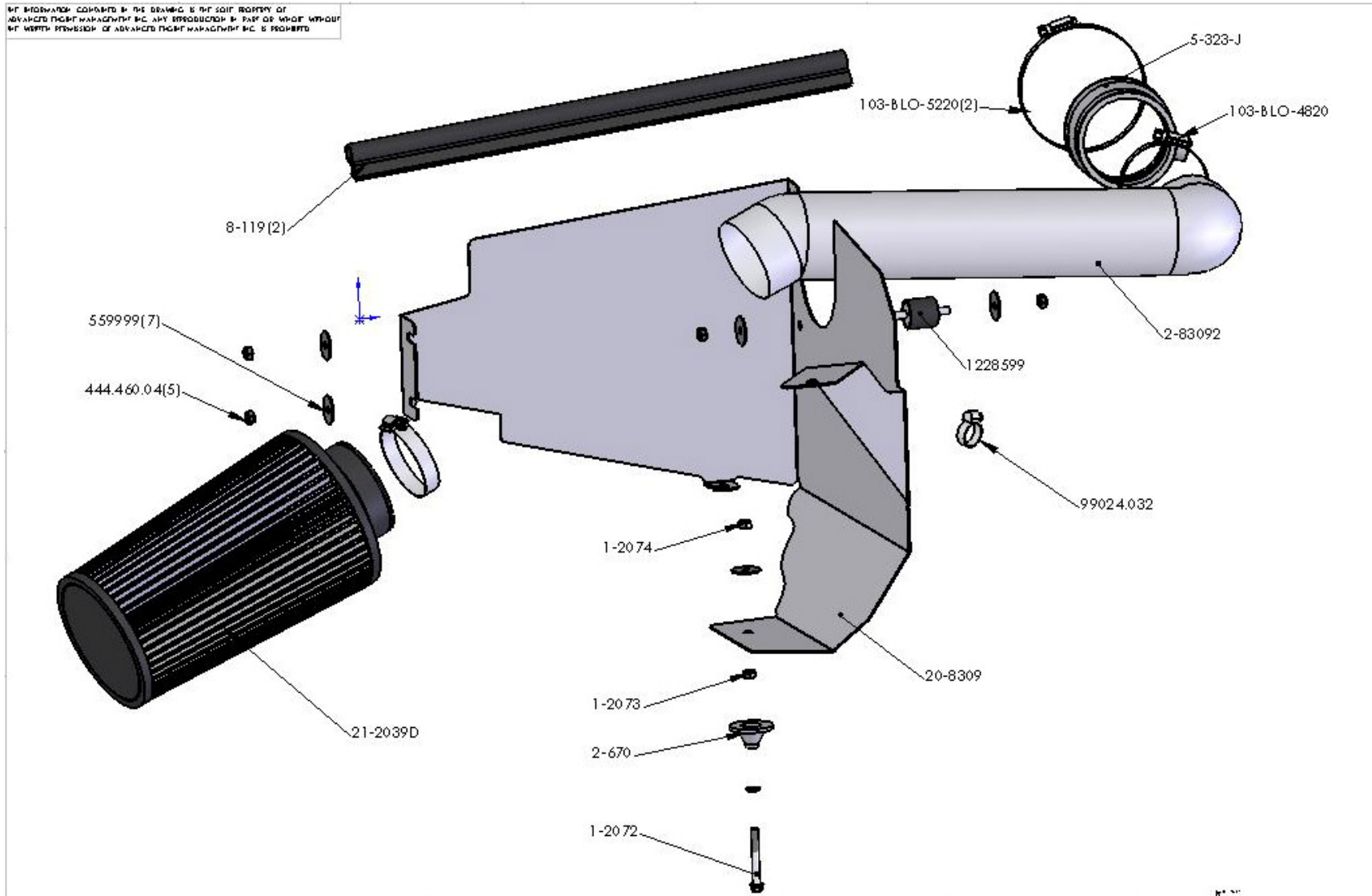
Brute Force Intake Systems that are pending an Executive Order number (EO#) relating to exemptions under Section 27156 of the Vehicle Code from the California Air Resource Board (CARB) are for off-road use only in California, which may never be used on public highways.

© 2006, Advanced Engine Management, Inc. AEM is a registered trademark of Advanced Engine Management, Inc. All rights reserved.



Advanced Engine Management Inc.  
2205 126<sup>th</sup> Street, Unit A  
Hawthorne, CA 90280  
Phone: 310.484.2322  
<http://www.aempower.com>

ALL INFORMATION CONTAINED IN THIS DRAWING IS THE SOLE PROPERTY OF  
ADVANCED FIBRE MANAGEMENT INC. ANY REPRODUCTION IN PART OR WHOLE WITHOUT  
THE WRITTEN PERMISSION OF ADVANCED FIBRE MANAGEMENT INC. IS PROHIBITED.



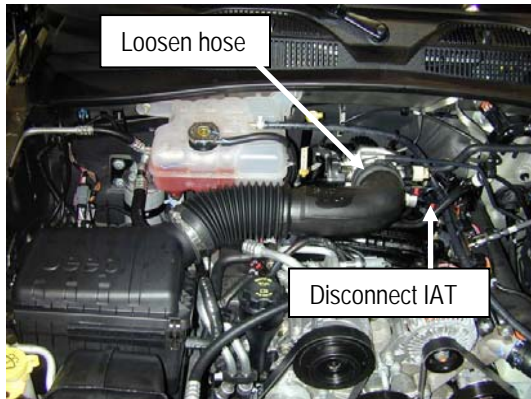
**Bill of Materials**

<b>Part Number</b>	<b>Description</b>	<b>Quantity</b>
2-83092	Inlet Pipe	1
10-8309	Instructions	1
5-323-J	Hose, Adapter 3.25/3.00X3" BLK	1
103-BLO-4820	Hose Clamp #48	1
103-BLO-5220	Hose Clamp #52	2
21-2039D	Air Filter Assembly 3.00 9" Element	1
1-2072	Bolt, 1/4-20-UNCx1 ¾	1
1-2074	Lock Nut, 1/4-20	1
1-2073	Nut, 1/4-20	1
2-670	Heat shield spacer	1
559999	M6 Washer	7
20-8309	Heat shield	1
444.460.04	M6 Nut	5
8-119	Gasket, Rubber Sponge	8
1228599	Mount, Rubber 1"X6mm	1
99024.032	Hose Clamp, 3/4"	1
10-922Y	AEM Decal	2
8-119	Gasket, Rubber Sponge	12

## 1. Preparing Vehicle

- Make sure vehicle is parked on a level surface.
- Set parking brake.
- If engine has run in the past two hours let it cool down

## 2. Removal of Stock System



a) Loosen the hose clamp at the throttle body. Disconnect the IAT (Inlet Air Temperature) Sensor harness connector. Push out the clip on the IAT to release.



b) Disconnect the crankcase breather hose from the air box. Remove air box by pulling straight up.

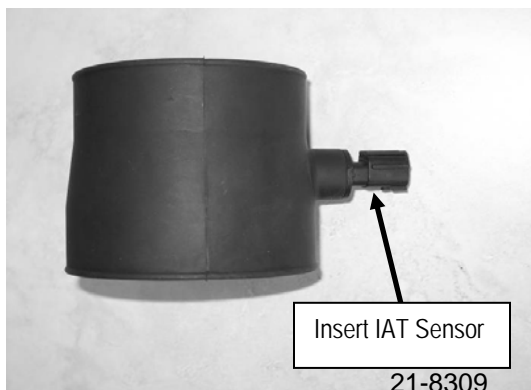
### Recommended Tools:

5/16" Socket  
10 mm Socket  
5/16" Nut Driver  
Extension  
Ratchet  
10mm Wrench

**Installation Time: 2 hours**

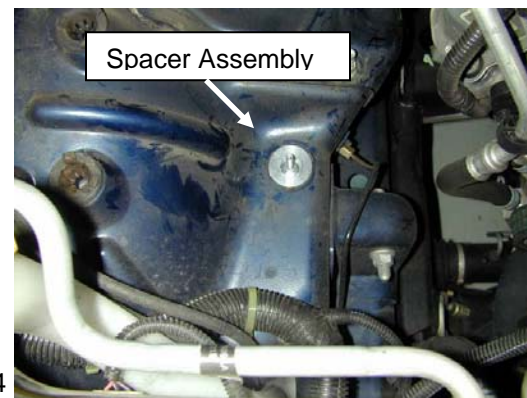
## 3. Installation of Brute Force Intake

- When installing the intake system, DO NOT completely tighten the hose clamps or mounting tab hardware until instructed to do so.



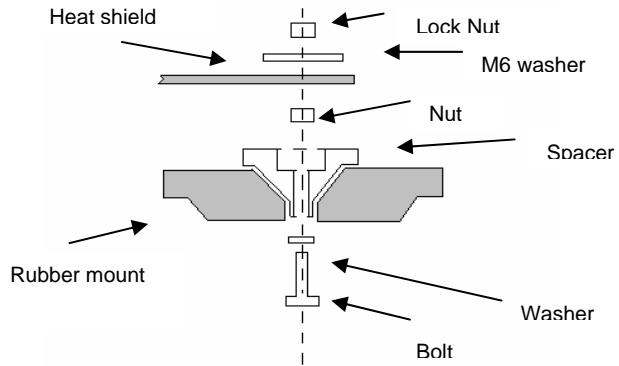
21-8309

b) Remove the IAT Sensor from the stock inlet pipe. Reinsert the sensor into the new throttle body coupler as shown.



c) Mount the spacer assembly in the lower rubber mount left by the bottom of the air box. Spacer assembly consists of the bolt, washer, spacers and nut. Refer to diagram.





e) Remove bolt. This part will be reused.



f) Attach coupler as shown. Secure with #52 hose clamp on the throttle body and #48 on the open end. Reattach the IAT Sensor harness.



g) Loosen and remove mounting nut. This nut will be reused if your vehicle has cruise control. If your vehicle is not equipped with cruise control, then use the M6 nut provided.



h) Insert the heat shield. Secure with provided washers and nuts. Check for factory installed hardware. If studs are secured with nuts already, remove first. Careful not to damage vacuum hoses or wire harness



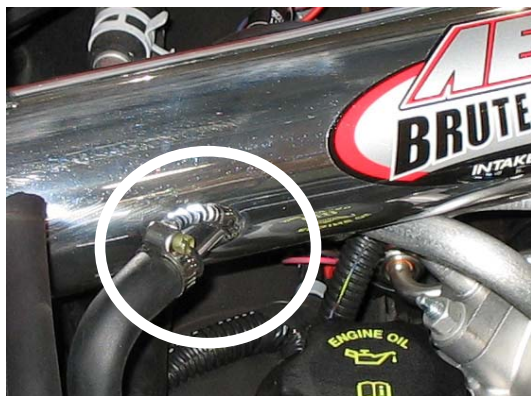
i) Attach the rubber mount and secure with 8mm washer and nut.



j) Insert the inlet pipe as shown. Align with mounting bracket.



k) Secure bracket with 8mm washer and nut.



l) Rotate breather hose 90 degrees clockwise. Reattach the crankcase breather hose. Secure with provided hose clamp.



m) Attach filter and secure. Attach rubber foam gasket to the top of the heat shield.



n) Your Cold Air Intake System should look like this.

**4. Re-assemble Vehicle**

- a) Position the inlet pipes for best fitment. Be sure that the pipes or any other components do not contact any part of the vehicle. Tighten the rubber mount, all bolts and hose clamps.
- b) Check for proper hood clearance. Re-adjust pipes if necessary and retighten them. Tighten radiator cap.
- c) Inspect the engine bay for any loose tools and check that all fasteners that were moved or removed are properly tight.
- d) Start engine. Let car idle for 3 minutes. Perform a final inspection before driving the vehicle.

**5. Service and Maintenance**

- a) It is recommended that you service your AEM Dryflow filter every 20,000 miles for optimum performance. Use AEM Dryflow cleaning kit part # 21-110.
- b) Use aluminum polish to clean your polished AEM Brute Force intake pipe.
- c) Use window cleaner to clean your powder coated AEM Brute Force intake pipe. **(NOTE: DO NOT USE Aluminum polish on a powder coated AEM BRUTE FORCE intake pipe)**

For technical inquiries  
e-mail us at  
[tech@aempower.com](mailto:tech@aempower.com)  
or  
call us at  
310.484.2322 Option #3

**12 MONTH LIMITED WARRANTY**

AEM warrants that its intake systems will last for the life of your vehicle. AEM will not honor this warranty due to mechanical damage (i.e. improper installation or fitment), damage from misuse, accidents or flying debris. AEM will not warrant its powder coating if the finish has been cleaned with a hydrocarbon-based solvent. The powder coating should only be cleaned with a mild soap and water solution. Proof of purchase of both the vehicle and AEM intake system is required for redemption of a warranty claim.