



RUBICON MANUFACTURING INC. 3290 MONIER CIR., RANCHO CORDOVA, CA. 95742 916-473-4600

INSTALLATION INSTRUCTIONS FOR: RE7500 SERIES TJ EXTREME DUTY LONG ARM TRI-LINK SYSTEM INCLUDING TJ UNLIMITED

Congratulations on purchasing the ultimate suspension upgrade available for the Jeep TJ.

Application Notes:

- 1) The TJ long arm system was originally designed for 5.5" lift. The front track bar may be marginally long for the 4.5" lift and is too long for the 3.5" lift. The male thread of the RE1610 bar can be shortened by about 3/8" to allow shortening the bar to better center the axle. An RE1600 front track bar (*without* a drop pitman arm) can be used in the factory mounts for the 3.5" kits.
- 2) It is highly recommended that a slip-yoke eliminator and CV drive shaft be used in conjunction with this lift.
- 3) This kit requires modifications to the exhaust system. Generally, after the suspension is installed, plan on a shop installing a system from the rear of the cat on back with a smaller muffler.
- 4) The "Rubicon" model TJ's will require that the installer fabricate a bracket to relocate the compressor (refer to Photo 2 for an example). Also, "Rubicon" model TJ's with automatics will have to remove the transmission skid plate for drive shaft clearance. If more transmission protection is required, the installer will have to fabricate it.
- 5) Atlas transfer cases require a 1" body lift on the '97-'02 kits and a modified or custom mount.

Safety Warning:

Suspension systems or components that enhance the off-road performance of your vehicle may cause it to handle differently, on and off-road, than it did from the factory. Care must be taken to prevent loss of control or vehicle rollover during sudden maneuvers. Failure to drive the vehicle safely may result in serious injury or death to driver and passengers. We recommend you always wear your seat belt, drive safely and avoid quick turns and other sudden maneuvers. Constant maintenance is required to keep your vehicle safe. Thoroughly inspect your vehicle before and after every off-road use.

Installation Warning:

We recommend that certified technicians perform the installations of our products. Attempts to install these products without knowledge or experience may jeopardize the safety of the vehicle. These instructions only cover the installation of our products and may not include factory procedures for disassembly and reassembly of factory components. Read instructions from start to finish and be sure all parts are present before disassembling the vehicle. Included instructions are guidelines only for recommended procedures and in no way are meant to be definitive. Installer is responsible to insure a safe and controllable vehicle after performing modifications. Do not perform test drives on public roads with partially completed installations. Always double and triple check your work before use.

KIT CONTENTS

Front Coil Springs 3.5" Kit: RE1363, 4.5" Kit: RE1355, 5.5" Kit: RE1352
Rear Coil Springs 3.5" Kit: RE1365, 4.5" Kit: RE1360, 5.5" Kit: RE1353

RE1155 Sway Bar End Links
RE1142 Gen2 Sway Bar Disconnects
RE1383 Bump Stops Front 3" (5.5" only), RE1380 2" (3.5" & 4.5")
RE1385 Bump Stop spacers Rear 1.5"
RE1395 Bump Stops Rear 1.5" Extended (5.5" only)
RE1517 Brake Line SS Rear 24"
RE1550 Brake Line SS Front 22"
RE1610 Front Extreme Duty Track Bar (recommend RE1600 for 3.5" and 4.5")
RE1611 Front Extreme Duty Drop Track Bar Bracket (recommend omitting for 3.5" and 4.5")
RE2035 Rear Shock Relocation Mount
RE2500 Drop Pitman Arm
RE4000 Extreme Duty Control Arm Front Lower Left
RE4010 Extreme Duty Control Arm Front Lower Right
RE4020 (2) Extreme Duty Control Arm Front Upper
RE4030 (2) Extreme Duty Control Arm Rear Lower
RE4045 (2) Extreme Duty Control Arm Rear Upper Tri-Link
RE4100 ('97-'02) or RE4200 ('03-'05) Extreme Duty Three Piece Belly Pan
RE4400 ('97-'02) or RE4405 ('03-'05) Tri-Link Rear Truss Kit

TYPICAL TOOLS REQUIRED

1" hole saw(s) for steel, 1/2" drill motor & drill bits (including a high quality 5/8" bit), angle grinder,
Basic mechanical hand tools and T-55 Torx head bit along with standard Torx head wrench set,
Floor jack & jack stands (2 Pair), Pitman arm puller, welder
Plasma cutter, or reciprocating saw w/metal cutting blades, or cutting wheels for angle or die grinder (to remove control arm mounts)

INSTALLATION OVERVIEW

The installation process can be broken down into the following tasks:

1. Removal of factory lower control arm mounts on frame.
2. 3-piece frame crossmember.
3. Front Control arms.
4. Rear Truss Assembly
5. Rear Control arms
6. Bump stops and coils.
7. Track bars, pitman arm and sway bar links.
8. Brake lines and shocks.
9. Final detailing and adjustments.

Step 1 - Removal of factory lower control arm mounts on frame

- A. First, support vehicle by frame (preferably on a lift) and work on a stable level surface. Support axles with jack stands and remove the following components; shocks, track bars, sway bar end links, coil springs, control arms, bump stops, brake hoses from axle end (it may be helpful to pinch-off hoses with vise grips to minimize fluid loss until new SS hoses are installed in step 6), and exhaust system behind the catalytic converter. NOTE: Coil springs can be removed without compressors if enough distance is generated between the axle and frame). If a lift is not being used, it may be easier to do this one side at a time on one axle at a time. CAUTION: If using coil spring compressors use extreme care as they will be holding a lot of potential energy and can release violently.
- B. Cut off the (4) factory lower control arm mounts from the frame. Use extreme care as not to damage the frame, or cut into existing brake, fuel, or electrical lines.
- C. Grind rough areas smooth and repaint – refer to Photo 1 for typical bracket removal.



Photo 1



Photo 2

Step 2 - 3-piece frame crossmember

- A. Support transmission and transfer case and remove stock crossmember. Note that the "Rubicon" model TJ's will require that the installer fabricate a bracket to relocate the compressor (refer to Photo 2 for an example).
- B. Assemble the right and left control arm mounts to the center section using only a few supplied flat head bolts for fitment purposes – refer to Photo 3 for orientation of parts. We will refer to this assembly from here on out as the "crossmember".



Photo 3

- C. Install the upper control arm mounting brackets from the RE4400 or RE4405 Tri-Link truss kit into the rear upper control arm pockets using the supplied 10mm bolts and lock nuts. - **Refer to photo 1.**

- D. Install crossmember using the six factory mounting bolts. Keep in mind that the two Pem nuts sticking up from each control arm mount will prevent the crossmember from fitting up flat against the frame bottom until the recess holes in step 'F' are made. Verify fitment to frame, transmission, transfer case and exhaust. This is the easiest time to make changes and install and remove the pan. Make note to adjust transfer case linkage and verify clearances.
- E. Be sure to pull fuel lines, brake lines, etc. clear of drilling. With crossmember in place, mark with a center punch (through the Pem nuts) the location of the 2 recess holes required in the bottom of each frame rail. You will need to drill a 3/16" pilot hole at these four center punch marks.
- F. Remove pan and drill out the four pilot holes on center with a 1" hole saw – refer to Photo 4. Paint all bare metal for protection.



Photo 4

- G. Attach right and left frame brace to crossmember, only finger tight, using two 1/2" bolts on each side into the Pem nuts – refer to Photo 5 for front view of right side assembly (less center section). Note large notch in brace is toward rear for clearance around body mount. Reinstall entire crossmember/frame brace assembly to frame.

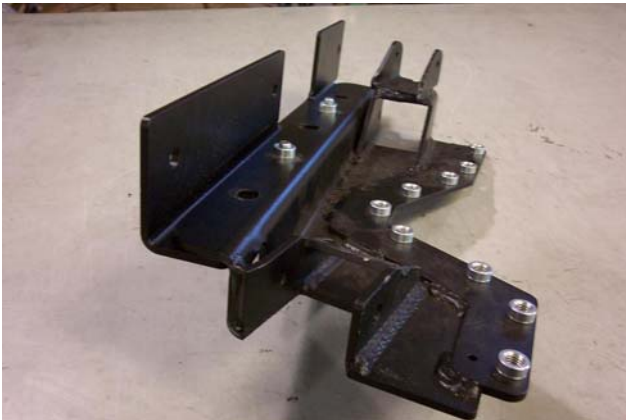


Photo 5

- H. With crossmember centered and frame braces tight against frame rails you are now ready to transfer mark the 3 holes on the side of both frame braces. Use a center punch or other method to accurately mark hole location to frame rail. After marking remove crossmember/frame brace assembly from frame once again.
- I. Use a 3/16" drill bit to run a pilot hole through both sides of frame at all six hole locations. Use care to drill perpendicular to frame.
- J. Use 1" hole saw to enlarge the six pilot holes only on outside surface of frame rail, and use 1/2" drill bit to enlarge the six pilot holes only on inside surface of frame rail opposite of 1" hole – refer to Photo 6.



Photo 6

- K. Install six frame spacers into the holes you just drilled. We recommend welding the outside surface of spacer to the frame. If welding, chamfered edge goes to outside of frame for weld fillet. Grind flush when finished. If not welding, chamfer goes inward. Use ½" rod or bolt to align spacer with ½" hole in inside surface frame rail – refer to Photo 7. Repeat welding and grinding at the remaining five spacers and paint all bare metal to protect it.



Photo 7

- L. You are now ready to permanently install pan. A total of 10 bolts will be used through bottom of frame braces and crossmember, and a total of 6 bolts will be used through side of frame braces and frame rails – refer to Photo 8. Install all remaining flat head bolts at center section and bolt the transmission mounting plate to crossmember and factory transmission mount.

Once the pan is installed, you can attach the control arm support braces to the frame (97-02) or back to the belly pan (03+). Run a bolt through the hole in the control arm bracket for alignment, then mark and drill the holes in the frame (97-02) or the belly pan (03+). **Refer to photo XXX & XXX.**



Photo 8

Step 3 – Front control arms

- A. FRONT - Adjust front lower control arms' length to an initial setting of 37.5" from bolt center to bolt center. Final arm lengths seem to vary from around 37.5" to 38" depending on lift, axle squareness (see step C) and differential clearance to track bar. Install adjustable end of arm to front crossmember with supplied hardware (zerk on top). Position the arms so the welded on brackets for the front upper arms are on top and leaning toward each other.
- B. Adjust front upper control arms' length to an initial setting of 15-7/8" from bolt center to bolt center. Install front upper arms' rubber bushing end into the welded on bracket of the lower arms with supplied hardware. The upper arms will be used to adjust final caster and pinion angle.
- C. Attach front lower control arms to axle with factory hardware, and attach upper arms to axle with supplied hardware – refer to Photo 9. Checking distance from axle mount to front factory crossmember bolt should verify if axle is square, adjust if necessary.



Photo 9

Step 4 – Rear truss assembly

- A. With the upper control arms removed and axle lowered, sand the top of the upper control arm brackets flat, removing the ears from the top front edge. Next, sand the tabs on the outer edges of the brackets smooth with the bracket. Then drill out the hole in the upper control arm mount to $7/16$ ". **Refer to photo XXX.**
- B. Loosely pre-assemble the rear truss assembly attaching the left and right control arm brackets, upper pivot support and the correct differential cover bracket. The rear truss kit includes both the D35 and D44 cover bracket. You will need to select the correct differential cover bracket from the kit for your vehicle. **Refer to photo XXX.**
- C. Remove the upper three differential cover bolts and lower the truss assembly over the upper control arm brackets. Insert the two upper bolts through the control arm brackets, using the supplied $5/16$ "x1" bolts, align the rear cover bracket and lightly tighten the bolts. Tighten the two $1/2$ " bolts that go through the control arm brackets and main truss. Mark and drill the four additional holes on the control arm mounts. **Refer to photo XXX.**
- D. Insert the $4\ 7/16$ " bolts thru the upper and lower holes in the brackets using the supplied spacers to keep the factory axle brackets from collapsing. Once all hardware is installed, tighten all but the three of the upper pivot support brackets. Leave two out and one just loose enough to swing the bracket out of position for easier upper link installation. **Refer to photo XXX**

NOTE: Do not install all of the upper pivot support bolts at this time. Leaving two bolts out and swinging the bracket out of the way will assist in installing the upper link assembly. Once the assembly is in place and axle centered install and fully tighten all hardware.

Step 5 – Rear arm installation

- A. REAR - Adjust rear lower control arms' length to an initial setting of about $32\text{-}5/8$ " from bolt center to bolt center. this measurement will be 42.625 ". Final arm lengths seem to vary from around $32\text{-}5/8$ " to 33.25 " depending on lift, axle squareness (see step F), tire size, and gas tank clearance. Install adjustable end of arm to rear crossmember lower mounts with supplied hardware (zerk on bottom).

LJ UNLIMITED - Adjust rear lower control arms' length to an initial setting of about $42\text{-}5/8$ " from bolt center to bolt center. Final arm lengths seem to vary from around $42\text{-}5/8$ " to $43\text{-}1/4$ " depending on lift, axle squareness (see step F), tire size, and gas tank clearance. Install adjustable end of arm to rear crossmember lower mounts with supplied hardware (zerk on bottom).
- B. UPPER TRI-LINK - Pre-assemble the two upper arms to the HD S/F ball assembly. Set both arms at an equal distance from the center of end to center of end, approximately $34\ 1/4$ " - do not tighten the jam nuts at this time. **It is very important that 1" of thread contact be maintained between the upper arms and the pivot assembly.**
- C. Remove two of the bolts from the upper pivot support bracket and slide the upper arm link assembly into the upper control arm pockets. Install supplied $1/2$ " x 4" bolts through the upper arm mount and mount support bracket.
- D. Install $5/8$ " bolt through upper pivot support bracket and main truss to fully secure upper assembly. **Refer to photo XXX.**
- E. Raise the axle into ride height position approximately 12"-13" distance between upper and lower spring cups. With a string line or straight edge, measure axle center off the side of the frame down to the axle. Make sure that your axle measuring point is the same on both sides. If your axle is off center to the driver's side, lengthen the driver's side arm and shorten the passenger's side arm or vice versa.

NOTE: Keep in mind that increasing or decreasing the length of the upper arm assembly will affect the pinion angle. Once centered, and thread contact into the pivot assembly threads is confirmed, use the lower arms to fine-tune pinion adjustment.
- F. Once all adjustments are made, verify that all brackets are installed and hardware tightened.

Step 6 – Bump stops and coils

- A. REAR BUMP STOPS - Remove the rubber insert from the rear bump stop. Remove the bump stop cup. Place the spacer between the bump stop cup and the tower using the supplied longer metric hardware. Reinstall stock rubber bump stop on 3.5" and 4.5" kits, or install RE1395 extended bump stops on 5.5" kits - refer to Photo 11.
- B. REAR COILS - Install rear coils.

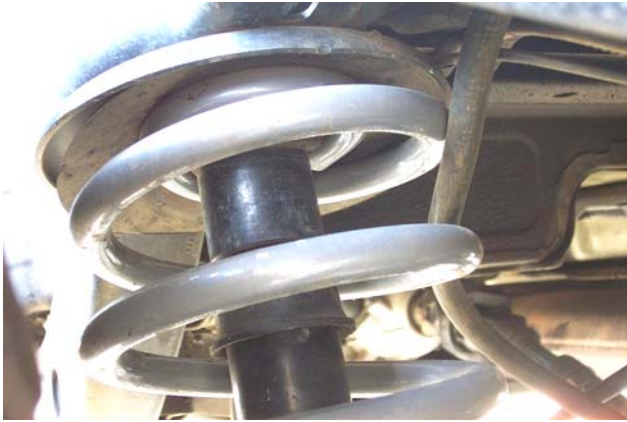


Photo 11



Photo 12

- C. FRONT BUMP STOPS - Drill 5/16" hole in center of lower spring pads. Use self-tapping bolt through bump stop to cut threads in lower spring pad. Remove bolt and spacer, it will be installed with the spring.
- D. FRONT COILS - Install the front coils with the bump stop inside of the coil – refer to Photo 12. Coil spring compressors may be useful. Once the spring is in place, put the bolt through the bump stop extension and thread the bolt into the lower spring pad (careful these strip easily). Be sure to rotate the coil to index the spring with lower coil cup, and reinstall coil spring clamp if removed earlier (not all vehicles have the spring clamps).

Step 7 – Track bars and sway bar links

- A. FRONT TRACK BAR/BRACKET – drill out factory bracket to 5/8" with a high quality bit and some cutting fluid (or similar). If using the RE1600 track bar skip to step 'D'. If installing the RE1611 drop bracket for the RE1610 track bar, attach drop bracket with supplied 5/8" hardware to the factory one so the new bracket slides up each side of the frame rail. Drill 1/2" holes through the frame at the two holes in the new bracket being sure holes are perpendicular to the frame. Attach new bracket to the frame with supplied 1/2" hardware - Refer to Photo 14.
- B. FRONT TRACK BAR - Attach new track bar to lower mounting bracket (axle side) using factory hardware. This will be the poly-bushing end of bar. Position bar so it starts out parallel with the axle (horizontal), then turns up toward the frame bracket. Before connecting bar to upper mount, center the vehicle over the axle by measuring the distance from front fender flare to tire on both driver and passenger sides of the vehicle, then adjusting vehicle until body is centered over the axle. The easiest way to accomplish this is when the vehicle is back on its wheels, have an assistant turn steering wheel left or right as necessary. Adjust spherical bearing end so that it will fit directly into the upper mount with the body centered. Tighten the jam nut to prevent the spherical bearing end from moving on the threads. Use supplied 10mm hardware to attach RE1610 to new bracket, or supplied 5/8" hardware to attach RE1600 bar to factory mount – refer to Photo 15 for typical installation.



Photo 14



Photo 15

- C. If using the RE1611 dropped track bar bracket, install the drop pitman arm. Use a good pitman arm puller to remove old one
- D. Install rear sway bar links just like the factory ones.

- E. Install front sway bar quick disconnects per instructions supplied with disconnects – refer to Photo 16. The latest adapter bracket should mount down over the top of the sway bar and bolt should go up through sway bar, then through adapter bracket. The carriage bolt head should be toward the frame at top end of disconnects. Use the thick round spacer between the bottom disconnect and mount and put the nut on the tire side of the mount. Install disconnect tubes and snap pins.



Photo 16



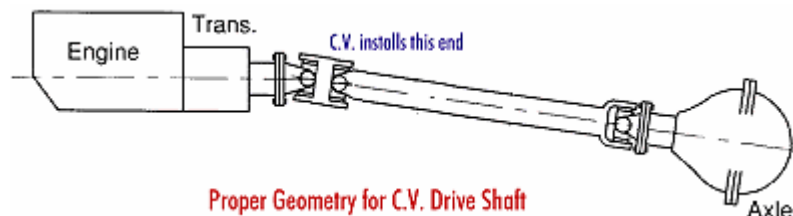
Photo 17

Step 8 – Shocks and brake lines

- A. Install longer front shocks. Some require bar pins to be installed through the bottom shock eyes (use light grease).
- B. Position and weld on rear shock mounts – refer to Photo 17 for typical installation. The slot in the bracket is provided to place over control arm bracket, but different shocks or lengths may require different positions. Generally, the mounts end up in the neighborhood of 45 degrees, but it's better to check that there is about 1" of shock travel remaining when the bump stops are touching their pads. Install longer rear shocks.
- C. Fully remove front factory brake hoses and replace with the supplied stainless steel ones. Some require positioning the block and line vertically at the caliper. Watch line routing so they do not catch on anything during axle articulation. Use angle brackets and e-clips at the body end.
- D. Fully remove rear brake line and install new one. Watch the routing so it does not catch on anything during axle articulation.

Step 9 - Final details and adjustments

- A. Install wheels and lower vehicle.
- B. Adjust the track bars to fit into the mounts with the axles as centered as possible (centering is not hyper critical).
- C. Thoroughly bleed brake lines per factory manual and check for leaks and a firm pedal.
- D. Torque all bolts to factory specs and double-check your work.
- E. Test drive and note location of steering wheel and any driveline vibrations.
- F. Adjust drag link to center steering wheel and align vehicle as soon as practical. Minimum factory caster and maximum factory toe-in seems to work well with these front ends (see Troubleshooting as well).
- G. Adjust control arms if necessary. **Note:** Due to vehicle variations installer must verify proper driveline angles and axle placement to avoid tire rubbing or axle coming in contact with gas tank, steering linkage, or exhaust system. Shown below is picture showing proper pinion angle for a CV style drive shaft (see Troubleshooting as well).



- H. Retighten all bolts after 50 miles and again after every off road excursion.

TROUBLESHOOTING

Rear driveline:

Acceleration vibration: Caused by the pinion being too high in relation to the transfer case output shaft. Adjust upper control arm to lower pinion accordingly.

Deceleration vibration: Caused by the pinion being too low in relation to the transfer case output shaft. Adjust upper control arm to raise pinion accordingly.

Slip yoke vibration: Caused by excessive angle on the transfer case slip yoke. This is not uncommon on lifted vehicles with some miles on them. For best performance, install a slip yoke eliminator (SYE) kit and CV drive shaft. Adjust pinion so it is about 2 degrees below parallel with CV drive shaft (see acceleration and deceleration vibration troubleshooting above).

High speed wobble:

It is a condition where front tires will shimmy after hitting a bump. Avoid bias ply tires and wheels with excessive offset. Check for worn or loose parts. In most cases a reduction of positive castor will eliminate this condition.

Bump steer: Caused by improper relationship of drag link and track bar. To correct, center axle again following the instructions supplied with the track bar. Next determine the neutral position of the steering wheel. Adjust the drag link to center the steering wheel. NOTE: A drop pitman arm should NOT be used on kits using the RE1600 front track bar in the factory mounts, as this will cause bump steer.