

JKS™

Installation Instructions

Product: Bar Pin Eliminators™

Part Number: PN 9607

Application: Jeep Wrangler JK, 2007+

Welcome

CONGRATULATIONS on your purchase of new JKS Bar Pin Eliminators! At JKS Manufacturing, we are committed to providing you with the best products available and your satisfaction is our first priority.

PLEASE READ these Installation Instructions carefully, and save them for future reference, as they contain important installation and maintenance information.

Important

NOT COMPATIBLE WITH Old Man Emu™ shock absorbers.

INSTALLATION OF BAR PIN ELIMINATORS effectively reduces the static length of shock absorber by 0.40".

Tools Required

- Metric/Standard Socket Wrench Set
- Torque Wrench
- Wheel Bearing Grease
- Bench Vice or C-Clamp
- Hammer and Punch *
- Sanding or Grinding Wheel *
- Factory Service Manual (recommended)

** Asterisk denotes tools that are not required for some applications. Thoroughly read instructions first to determine which tools will be required for your application.*

Parts



QTY	DESCRIPTION
2	Cross Pin / Mounting Block Combo
2	Mounting Blocks
2	1/8" Roll Pins
4	M10 x 50mm Hex Bolts
4	Split Washers

Installation

❑ 1. REMOVE SHOCK ABSORBERS

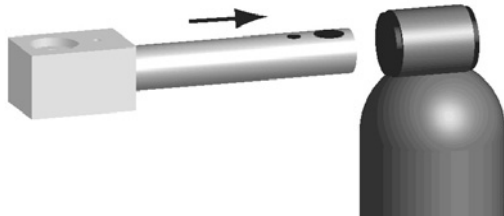
- Remove the upper shock absorber mounting bolts from the chassis bracket.
- Remove the lower mounting bolt and nut from the axle bracket. Retain lower mounting hardware for reassembly.
- Remove the rear shock absorbers from the vehicle.
- Remove the factory bar pin from the upper shock absorber bushing. Discard the factory bar pin and upper mounting bolts.

HINT: A hammer and punch may be useful for removing factory bar pin.

- Inspect the shock absorber bushings for wear and deterioration. If new bushings are needed, replace with standard 5/8" ID hourglass type bushings before installing Bar Pin Eliminators.

❑ 2. MOUNT BAR PIN ELIMINATOR TO SHOCK ABSORBER

- Apply a thin coating of wheel bearing grease to the 5/8" Cross Pin and fully insert into the upper shock absorber bushing.



- Slide remaining Mounting Block onto opposite end of Cross Pin, making sure the bolt and roll pin holes are correctly positioned and aligned.

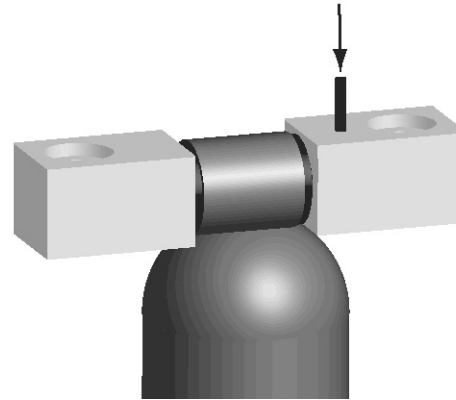
This product is designed to preload the shock absorber bushings for maximum bushing performance and longevity. Therefore, you should find it necessary to compress the bushing approximately 1/16" to 1/8" before the mounting bolts and/or roll pins can be inserted.

IMPORTANT: If you are able to install the Bar Pin Eliminator without compressing the shock bushing, it will be necessary to install a SAE 5/8" flat washer (not supplied) between the bushing and Mounting Block to ensure proper bushing preload.

- Squeeze Mounting Blocks together to compress the shock absorber bushing until bolt and roll pin holes align.

HINT: A bench vice or C-clamp is useful for compressing shock absorber bushing.

- Tap the 1/8" Roll Pin through the Mounting Block and into corresponding hole in Cross Pin.

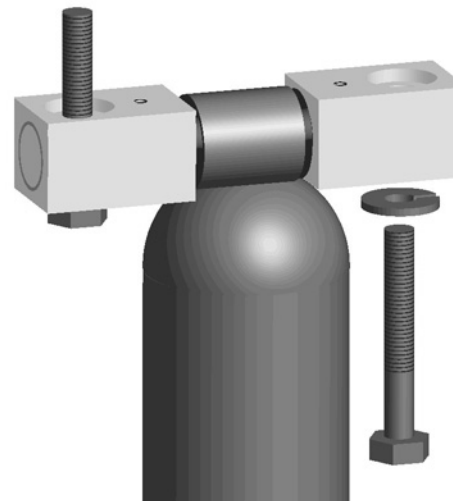


❑ 3. RE-INSTALL SHOCK ABSORBERS

- Clean any dirt or debris from the upper shock absorber mounting surface on chassis bracket.

HINT: A sanding or grinding wheel is useful for removing any stubborn material.

- Place a Split Washer on each of the appropriate Cap Bolts.



- Position Bar Pin Eliminator on chassis bracket with recessed holes facing the mounting surface. Insert the 50mm Hex Bolts through Bar Pin Eliminator and thread into the original shock absorber mounting holes.

HINT: The Mounting Blocks of Bar Pin Eliminator must lay completely flat against the mounting surface of chassis bracket.

- Using a torque wrench, tighten the mounting bolts to 25-35 ft-lbs.
- Install shock absorber to lower axle bracket using the factory mounting bolt and nut. Tighten the mounting bolt to 56 ft-lbs.

© 2007 JKS Manufacturing, Inc & Aftermarketing, LLC
Revision Date 6/26/2008