



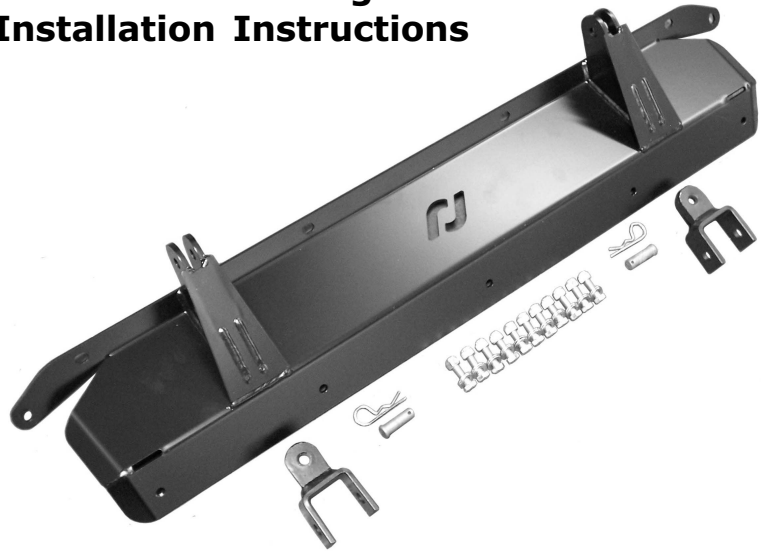
CE-9033JK '07 & up Jeep JK Tow Bar Mounting Kit Installation Instructions

Kit includes:

- 1 - CE-9033JKMP - Tow Bar mounting plate
- 11 - 3/8"-24 x 1" long bolts
- 22 - 3/8" flat washers
- 11 - 3/8"-24 nylock nuts
- 2 - CE-9033B - Tow bar mounting fork brackets
- 2 - EE-11-225-Z - Clevis pins
- 2 - EE-107-20 - Hairpins

Tools Needed:

- Phillips Screwdriver
- C-clamps or Vice-Grips
- 3/8" Transfer Punch
- Hammer
- Drill - air or electric
- 3/16" drill bit
- 3/8" drill bit
- 3/8" ratchet w/ 9/16" socket
- 9/16" wrench



1 Remove all plastic attaching screws from stock plastic valance panel, then remove the panel from the vehicle.



2 Fit new plate into position. Make sure the ends of the new plate wedge between the ends of the stock plastic bumper cover and the metal of the frame crossmember.



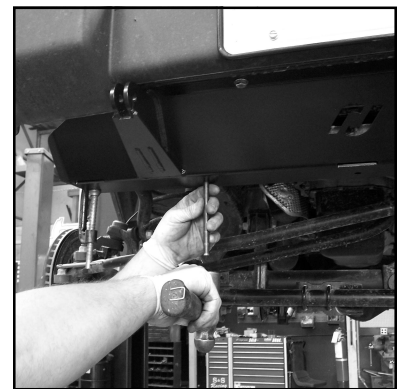
3 Initially mount the new plate to the bottom of the bumper by installing 4 of the 3/8"-24 x 1" bolts, washers top and bottom, and nylock nuts in the 4 pre-existing upper holes. Snug these bolts, but do not tighten.



4 Before proceeding any further, center the new plate side to side on the vehicle using the bumper guards and the tow bar mounts on the plate as reference. Tighten the 4 top bolts.



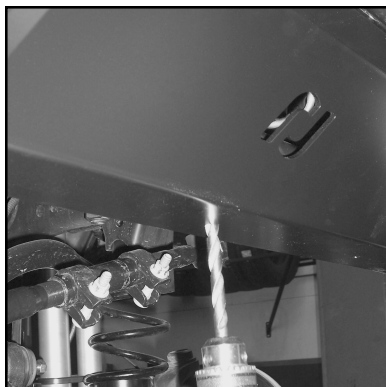
5 Next, with C-clamps or Vice-Grips, clamp the back of the plate up snugly to the bottom of the crossmember.



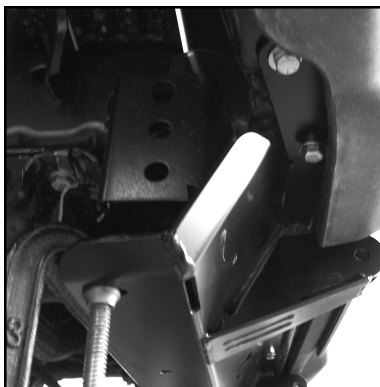
6 Using the plate as a template, and a 3/8" transfer punch, punch the 2 undrilled upper holes and all of the bottom holes.

If you have any questions during the installation of our products, please feel free to contact us!

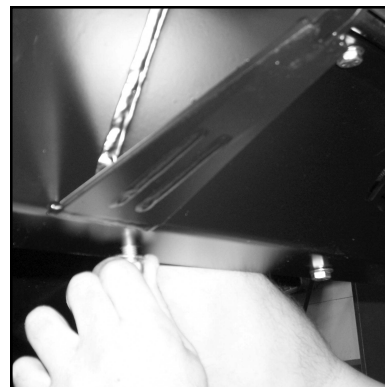
Currie Enterprises / RockJock 4x4 Professional Off-Road Products
1480 N. Tustin Ave., Anaheim, Ca. 92807 - Ph. (714) 528-6957 / F. (714) 528-2338
www.rockjock4x4.com



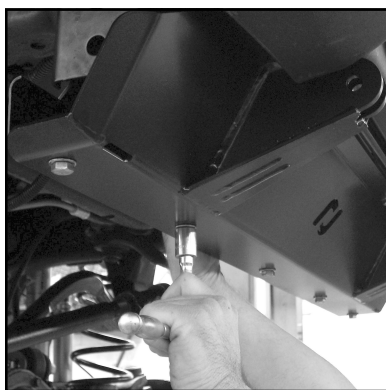
7 Now go back and drill the holes. Drill pilot holes first with a 3/16" bit, and then follow that up with a 3/8" bit.



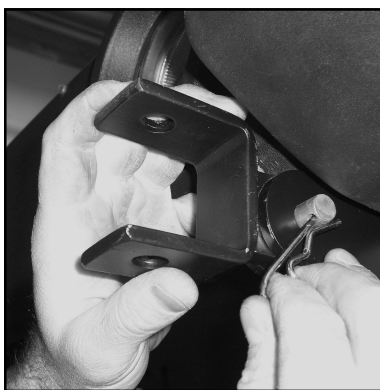
8 Install the remaining 2 top bolts, using the 3/8"-24 x 1" bolts, a washer top and bottom, and the nylock nuts. Go ahead and tighten these bolts down.



9 Start several of the bottom bolts into their holes with washers and nuts, and then remove the C-clamp or Vise-Grips that you had the plate clamped to the crossmember with.



10 After all of the lower bolts are in their holes, go back and tighten all of the bolts with a 9/16" wrench on top and socket on the bottom.



11 Attach tow bar ends by inserting them into the bracket on the plate and affixing them in place with the clevis pins and hairpins. Tow bar ends must then be bolted to the tow bar of your choice.



12 For optimum performance your tow vehicle's hitch should allow for the tow bar to ride as level as possible. Always use safety chains (included with the CE-9033F tow bar). This system will work with universal adjustable tow bars from Friedl, Draw-Tite, Valley, or Blue Ox.

Look for more  JK products online at www.rockjock4x4.com, or at your local dealer!



If you have any questions during the installation of our products, please feel free to contact us!
 Currie Enterprises / RockJock 4x4 Professional Off-Road Products
 1480 N. Tustin Ave., Anaheim, Ca. 92807 - Ph. (714) 528-6957 / F. (714) 528-2338
www.rockjock4x4.com