

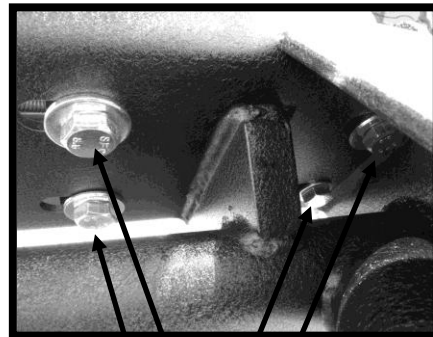
INSTALLATION INSTRUCTIONS
PART#JK 1951
FRONT TUBULAR BUMPER FOR 07 JEEP WRANGLER

PARTS LIST:

1	Front Rock Crawler Bumper	8	12mm lock Nuts
8	12-1.75mm x 35mm Hex Head Bolts	16	12mm Flat Washers

PROCEDURE:

- 1. REMOVE CONTENTS FROM BOX. VERIFY ALL PARTS ARE PRESENT. READ INSTRUCTIONS CAREFULLY.**
- Remove the four bolts on the passenger side and the four bolts on the driver side securing factory bumper to the frame. Disconnect any wiring from the bumper and remove completely.
NOTE: Use a zip tie to secure wiring under the hood.
- Position the Bumper onto vehicle and line up the holes on the bumper with holes on the frame.
- Secure bumper to frame by using the included (8) 12-1.75mm Hex Head Bolts, (8) 12mm lock Nuts, and (16) 12mm Flat Washers (Figure 1). Do not fasten bolts at this time.
- Level and adjust Front Bumper, then fasten all hardware at this time.
- Do periodic inspections to the installation to make sure that all hardware is secure and tight.



12mm Hex Bolts,
12mm Flat Washers,
and 12mm lock Nuts

