



FITTING INSTRUCTIONS

Part Number: **3450150 F/KIT 6172496**
Product **BULL BAR REDUCED WIDTH**
Description:
Suited to **JEEP WRANGLER TJ AND YJ**
vehicle/s: **SUITS WINCHES: WARN M8000, XD9000, XP9000, 9.5Ti, 9.5XDC, Magnum 9000, RAMSEY PRO 9000**

WARNING

REGARDING VEHICLES EQUIPPED WITH SRS AIRBAG:

When installed in accordance with these instructions, the front protection bar does not affect operation of the SRS airbag.

ALSO, NOTE THE FOLLOWING:

- ◆ This product must be installed exactly as per these instructions using only the hardware supplied.
- ◆ In the event of damage to any bull bar component, contact your nearest authorised ARB stockist. Repairs or modifications to the impact absorption system must not be attempted.
- ◆ Do not use this product for any vehicle make or model, other than those specified by ARB.
- ◆ Do not remove labels from this bull bar.
- ◆ This product or its fixing must not be modified in any way.
- ◆ The installation of this product may require the use of specialized tools and/or techniques
- ◆ It is recommended that this product is only installed by trained personnel
- ◆ These instructions are correct as at the publication date. ARB Corporation Ltd. cannot be held responsible for the impact of any changes subsequently made by the vehicle manufacturer
- ◆ During installation, it is the duty of the installer to check correct operation/clearances of all components
- ◆ Work safely at all times
- ◆ Unless otherwise instructed, tighten fasteners to specified torque

ARB 4x4 ACCESSORIES

Corporate Head Office

42-44 Garden St
Kilsyth, Victoria
AUSTRALIA 3137

Tel: +61 (3) 9761 6622
Fax: +61 (3) 9761 6807

Australian enquiries
North & South American enquiries
Other international enquiries

sales@arb.com.au
sales@arbusa.com
exports@arb.com.au

www.arb.com.au

GENERAL CARE AND MAINTENANCE

By choosing an ARB Bar, you have bought a product that is one of the most sought after 4WD products in the world. Your bar is a properly engineered, reliable, quality accessory that represents excellent value. To keep your bar in original condition it is important to care and maintain it following these recommendations:



- Prior to exposure to the weather your bar should be treated to a Canuba based polish on all exposed surfaces. It is recommended that this is performed on a six monthly basis or following exposure to salt, mud, sand or other contaminants.
- As part of any Pre Trip Preparation, or on an annual basis, it is recommended that a thorough visual inspection of the bar is carried out, making sure that all bolts and other components are torqued to the correct specification. Also check that all wiring sheaths, connectors, and fittings are free of damage. Replace any components as necessary. This service can be performed by your local authorized ARB Stockist.

FITTING REQUIREMENTS

REQUIRED TOOLS FOR FITMENT OF PRODUCT:

Basic Spanner and Socket set	

HAVE AVAILABLE THESE SAFETY ITEMS WHEN FITTING PRODUCT:

Protective eyewear		Hearing protection	
--------------------	---	--------------------	---

NOTE: 'WARNING' notes in the fitting procedure relate to OHS situations, where to avoid a potentially hazardous situation it is suggested that protective safety gear be worn or a safe work procedure be employed. If these notes and warnings are not heeded, injury may result.

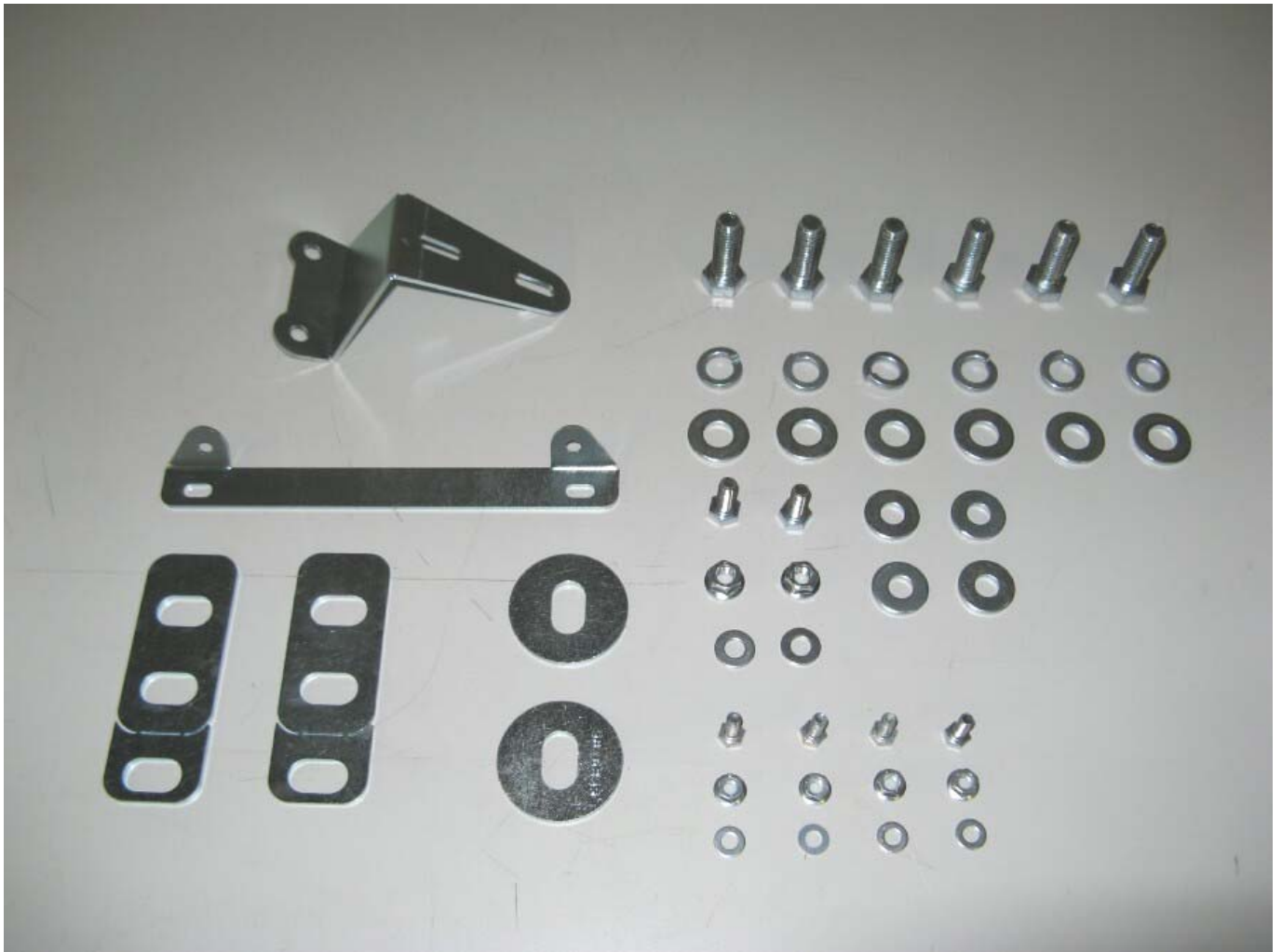
FASTENER TORQUE SETTINGS:

SIZE	Torque Nm	Torque lbft
M6 or 1/4"	9Nm	7lbft
M8 or 5/16"	22Nm	16lbft
M10 or 3/8"	44Nm	32lbft
M12 or 1/2"	77Nm	57lbft

PARTS LISTING

APPLICATION.	PART NO.	QTY	DESCRIPTION
Winch bumper preparation	3751634	1	Bracket Licence Plate
	3751635	1	Bracket Control Box
	6151017	4	Bolt M6 x 16
	6151021	2	Bolt M8 x 20
	6151128	4	Nut Flange M6
	6151132	2	Nut Flange M8
	4581035	4	Washer Flat M6
	4581044	2	Washer Flat M8
	4581040	4	Washer Flat M10
Fitting winch bumper	5848363	2	Packer Chassis Top
	5846255	2	Packer Chassis Lower
	6151100	6	Bolt 1/2" x 1 1/2" UNC
	4581049	6	Washer Flat 1/2"
	4581050	6	Washer Spring 1/2"

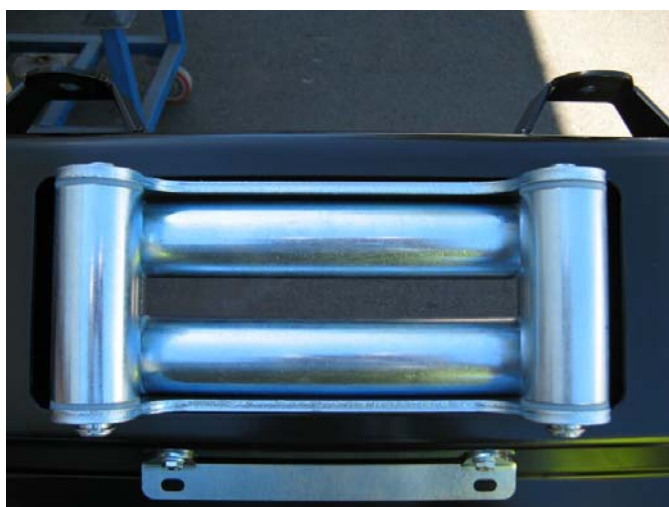
FITTING KIT CONTENTS



FITTING PROCEDURE



1. Fit licence plate bracket to mount face on lower front of winch bumper using holes provided.



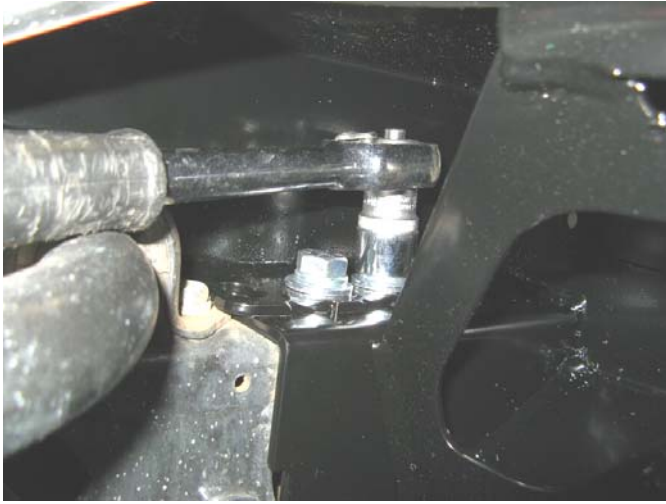
2. If fitting winch fit roller fair lead to front position in winch bumper



3. Remove the existing bumper from the vehicle, there are six 1/2" bolts securing bumper to chassis
4. Slide the new winch bumper onto chassis.
5. Check if the top deck of the winch bumper aligns to the vehicle. If there is a variance and there is clearance to the chassis inside the bracket you can use the 3mm packers in the kit to either pack the bar up or down, long packers are for the top of the chassis, short packers on the bottom, otherwise discard the packers.

NOTE: The long packer is designed to have the end broken off to suit shorter bolt pitch for fitment in the TJ. Break the end off with a pair of pliers or a wrench

FITTING PROCEDURE



6. Secure the winch bumper in place using the 6 x 1/2" bolts and washer sets.
7. Tighten the bolts to specified torque.



8. If fitting a winch, carefully lower the winch through the top of the deck cut-out. Secure using the bolts supplied by winch supplier and the M10 washers supplied in the ARB fitting kit if required.
9. Refer to the Winch manufacturers installation instructions for the correct procedure. Adjust the winch in the slots until the clutch lever can rotate freely in the opening of the deck. Connect the control box cables to the winch motor. Refer to the winch manufacturer's handbook for additional information. Connect the long winch + & - cables to the vehicle after the winch bumper has been installed
10. NOTE: Refer to the winch manufacturers winch manual for the vehicle wiring instructions.



11. Fit the control box bracket to the winch bumper rear deck edge using the M8 bolts, washer and nuts provided.

FITTING PROCEDURE



12. Fit the control box to the control box bracket and wire up as per winch manufacturers instructions.
13. Pull the winch cable through the roller fairlead and attach to the winch bumper tow point
14. If required, fit the licence plate to the bracket using M6 bolt, nut and washer sets provided

FINAL NOTES:

- ◆ *When routing wiring make sure wires do not rub against sharp edges, are at least 15mm (5/8") away from moving parts and are firmly secured*
- ◆ *If fitting winch, refer to winch manufacturers installation instructions*
- ◆ *Connect wiring to lights and winch.*
- ◆ *Check operation of all lights.*
- ◆ *Check winch operation*

FITTED PRODUCT

