



MOUNTAIN OFF ROAD ENTERPRISES LLC.
P O BOX 690 DELTA, COLORADO 81416
970-625-0500
E-MAIL: info@mountainoffroad.com
www.mountainoffroad.com

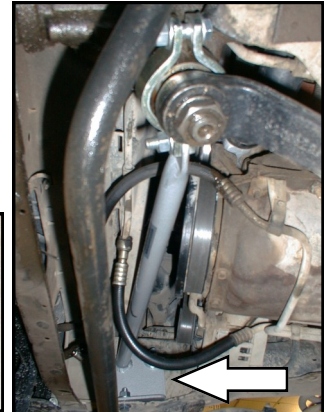
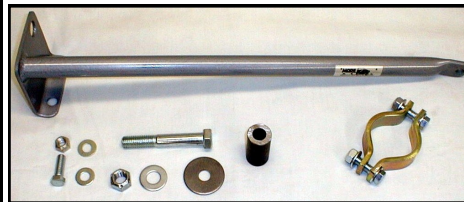
INSTALLATION INSTRUCTIONS FOR: SB9037XJ

SB9037XJ contains the following items:

Quantity:	Description:
1	Brace
2	Clamp Halves
2	7/16x1-3/4" Bolts
6	7/16 Flat Washers
3	7/16 Crimp Lock Nuts
1	7/16x1-1/4 Bolt
1	Frame Sleeve (1-1/8 dia. x 2-3/16)
1	5/8" Washer (large)
1	5/8x4 Bolt
1	5/8 Crimp Lock Nut

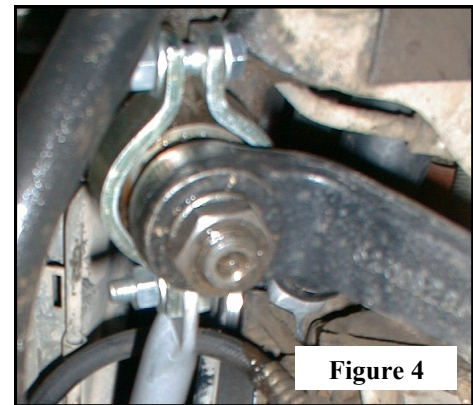
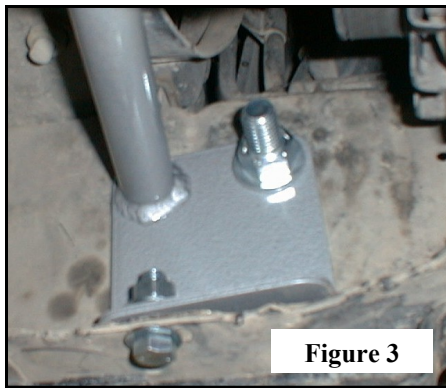
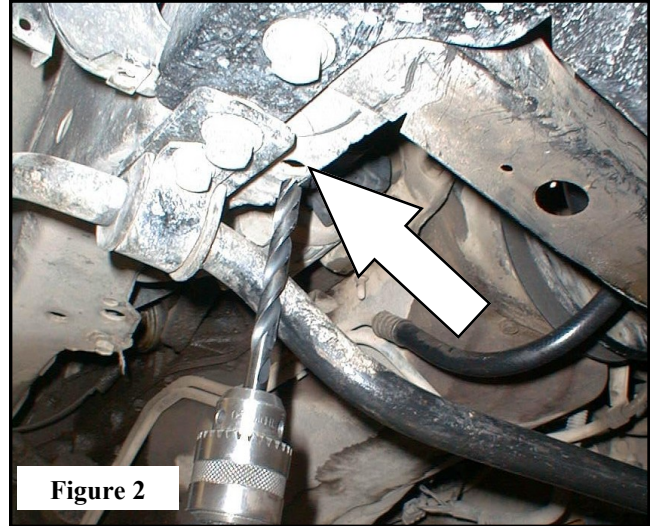
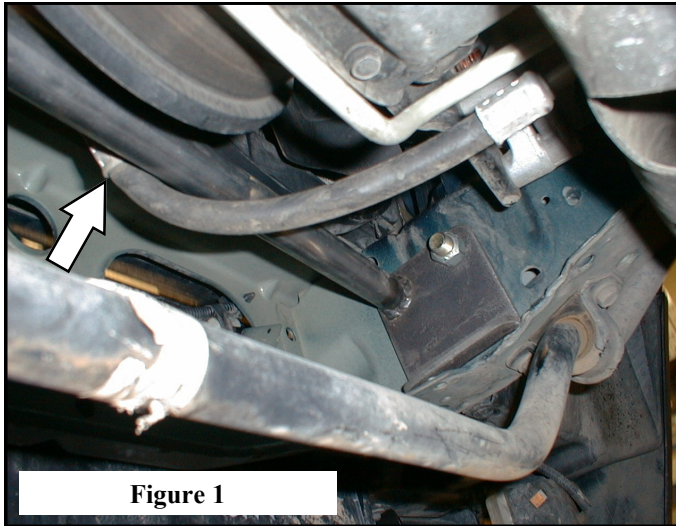
This photo shows the brace installed on the XJ Cherokee. Arrow indicates the front of vehicle.

Below, is all of the components that come in the kit, listed to the left.



This steering brace fits 1987-2001 Jeep® XJ Cherokee vehicles with power steering, and 4.0L engines. It is designed to bolt into existing holes in the chassis, with minor drilling, and clamps to the steering box housing just above the sector shaft/pitman arm.

- Carefully remove the rubber splash guard from the under side of the radiator, above the anti-sway bar. The plastic push pins can be re-used.
- Install the brace into the chassis. The brace must be routed "through" the transmission cooler hose. The arrow shows this in **Figure 1**.
- Install the 5/8 large washer over the head of the 5/8x4 bolt, then install the frame sleeve over the bolt. Install the assembly through large hole in frame from the outside toward the inside, and through the brace. The threads will be on the inside of the brace. Install the 5/8 SAE washer and crimp lock nut on the bolt. Do not tighten at this time.
- Locate the existing hole in the passenger side lower frame rail using the brace as a guide. Enlarge this hole to 7/16" with a power drill. **See Figure 2**. Install one 7/16" flat washer on the 7/16x1-1/4" bolt, then insert the bolt up through the frame and brace. Then install one more 7/16" flat washer over the threads of the bolt and install the 7/16" crimp lock nut on the bolt. Do not tighten at this time. **See Figure 3**.
- Install the clamp on the steering box housing just above the pitman arm. The proper assemble sequence is: 7/16x1-3/4" bolt with one flat washer under head. Clamp half. Steering brace. Clamp half. Flat washer, crimp-Loc nut. **See Figure 4**. Make sure that the steering pitman arm and clamp halves do not contact each other.
- Tighten all hardware using hand tools. Use your best judgement as to how tight, being careful not to over tighten any components, but do not leave them loose ether. Re-check all hardware after 50 miles and every so often thereafter.



TERMS-POLICIES:

FIT and TOLERANCES: All parts in M.O.R.E.™ products are the results of countless hours of research, testing, fitting and refining. Jeeps have a large tolerances from vehicle to vehicle. In addition to the factory tolerances, most people install other than factory equipment (aftermarket add-ons). M.O.R.E.™ has done the best job we can to insure that our parts fit with some of the possibilities. However, you may find it necessary to grind, elongate, bend, or force the parts you buy to fit on your rig. Be sure that you want to install them before you modify them. Please use common sense when installing these parts and let us know how we can improve them.

RETURNS: No returns will be accepted without prior permission from **M.O.R.E.™ LLC**. After you receive a Return Goods Authorization (RGA) number, merchandise must be returned prepaid and insured. A claim must be made with in 30 days from receipt of merchandise. The original invoice or a copy with the RGA number written on must accompany all returns. A 20% restocking fee will be charged on all parts returned for credit or refund unless merchandise is proven to be defective or was shipped wrong by **M.O.R.E.™ LLC**. No merchandise will be issued credit or refund if it has been installed, modified, used in any way or is in unsalable condition.

DAMAGE CLAIMS: All orders are carefully packed, however, mishandling by the carrier can result in damage. The carrier has the responsibility for the shipment from the time it leaves our warehouse until it is delivered to you. All claims for lost or damaged goods should be reported to the carrier, not to **M.O.R.E.™ LLC**.

WARRANTY: All merchandise is warranted to be free from defects in materials and workmanship prior to installation. Any alteration or improper use will void this warranty. Because all parts we sell are intended for use in heavy-duty applications it is not possible to warrantee or guarantee the performance of any items. **M.O.R.E.™ LLC** products and the products manufactured by others, which we sell may be subject to an infinite variety of conditions due to the manner in which they are used, serviced and/or installed. Purchasers and users of such products rely upon their own judgment as to the suitable use selection, service and installation of such products.

PRODUCT DISCLAIMER: Modification of your vehicle to enhance performance with parts sold by **M.O.R.E.™ LLC** may create a dangerous condition which could cause serious bodily injury, and the buyer hereby expressly assumes all risks associated with any such modifications. All parts sold by **M.O.R.E.™ LLC** are for racing or off road use only. Mountain Off Road Enterprises LLC. will not accept responsibility for personal injury or property damage arising from the failure of any parts manufactured or sold by **M.O.R.E.™ LLC**.

Specifications are subject to change without notice.

Jeep®, AMC®, CJ®, YJ®, TJ®, XJ®, Cherokee®, Wrangler®, are registered trademarks DaimlerChrysler.

M.O.R.E.™, BombProof™, S.R.S.™, SlipLoc™, DoubleJointed™, RockProof™, are trademarks used by Mountain Off Road Enterprises, LLC. The M.O.R.E.™ logo, and this instruction sheet is copyright©, 1996-2008.