

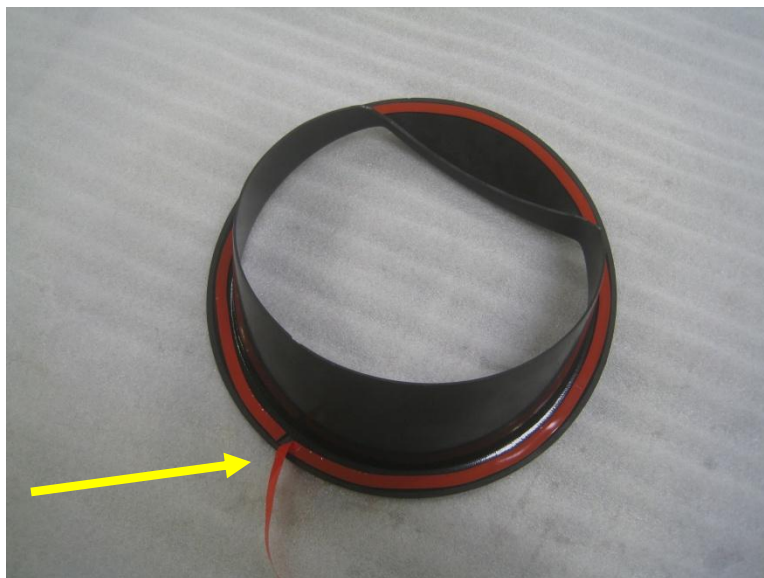
DETERMINATION HEADLIGHT BEZEL INSTALLATION INSTRUCTIONS

STEP 1: PREPARING FOR PART INSTALLATION

A) Using a lint free cloth and rubbing alcohol, clean the grill in the area around the headlight.



B) Fold the red vinyl backing from the adhesive tape over at a 45° angle.



STEP 2: EYEBROW BEZEL INSTALLATION

A) Place the eyebrow bezel in the opening around the headlight aligning the line formed into the part with the screw pocket in the grill.



B) Hold the eyebrow bezel gently in place and peel the red backing away from the adhesive tape.



C) Apply firm pressure to the taped area all the way around the eyebrow bezel to ensure compressive contact of the adhesive to the grill.



Installation complete!