



INSTALLATION INSTRUCTIONS

75-1514-1

1997-2005
Jeep Wrangler

4.0L L-6

Qty	Parts List	Qty	Parts List	Qty	Parts List	Qty	Parts List
1	1/2" x 9" Vacuum Hose	4	#10 Screw	1	Air Box	1	5/16"
1	2-3/4" x 2" Coupler	2	1/4"-20 Bolt	1	Tube	4	#10 Washer
2	# 44 Hose Clamp	1	M8 x 40 Bolt	1	Clear Lid	4	1/4" Washer
1	Tie Bar Spacer	2	1/4"-20 Nut	1	Filter	1	grommet

Tools Required

7/16" Socket & Wrench, Flat Head Screwdriver, Phillips Head Screwdriver

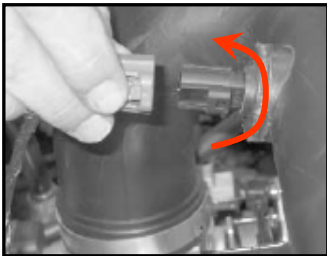
1. Turn off engine and disconnect negative battery terminal.



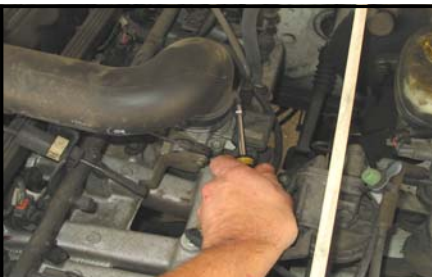
2. Remove the 1/2" crankcase vent hose from the OE air tube.



2a. **If Equipped:** Disconnect the Air Temp. Sensor electrical connection near the throttle body and rotate it a 1/4 turn counterclockwise to remove it from the tube..



3. Loosen the clamps on the OE air tube.



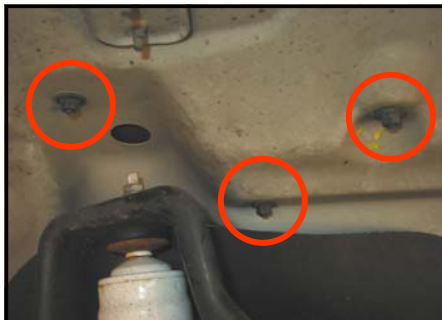
4. Release the 5 clips on the OE air box.



5. Remove the OE air tube and air box lid from the vehicle. Remove the OE air filter element.



6. Loosen the 3 nuts that secure the OE air box to the inner fender of the vehicle.



7. Remove the OE air box from the vehicle.



8. Remove the OE bolt in the passenger side core support rod near the grill at the front of the vehicle.



9. Install the S&B air box. Use the 1/4 bolts, washers, nuts and tighten the box to the inner fender.



10. Attach the 2 3/4x2 coupler to the S&B tube, leaving the clamps semi tight for adjustment. Install the S&B tube into the vehicle.

If Equipped: with the air temp. sensor, you will need to drill a 3/4" hole in the S&B tube before installing it. Use the OE tube as a guide for proper hole placement. Install the supplied grommet into the 3/4" hole and continue with the installation.



11. Slide the #60 hose clamp onto the S&B tube.

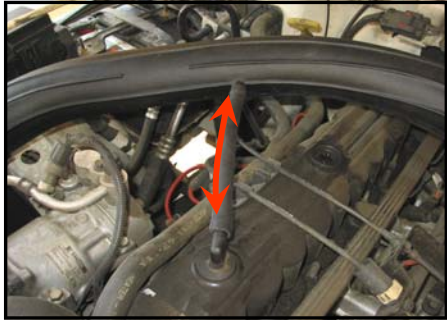


12. Install the S&B filter into the S&B box. Slide the filter onto the air tube until the filter base contacts the air box wall. This is a "pull thru method".

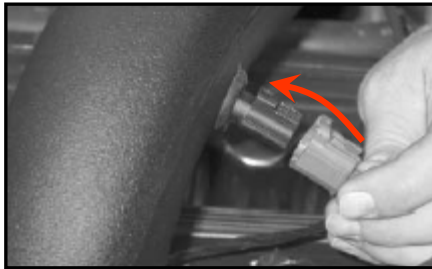


INSTALLATION INSTRUCTIONS (continued)

13. Attach the S&B 1/2"x9" CCV hose to the tube. Attach the other end to the crankcase vent fitting on the valve cover. Tighten the S&B intake tube connection at the throttle body, and check all mounting points and hose clamps for fit and tightness.

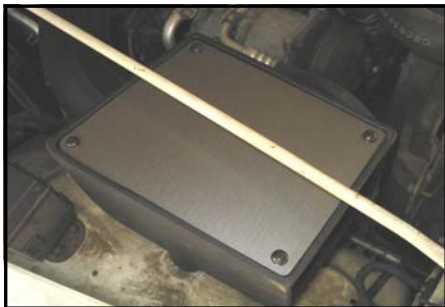


If Equipped: Remove the o-ring from the Air Temp. sensor before inserting the sensor into the grommet in the intake



15. Attach the S&B air box lid to the S&B air box. Use the #10 screws and washers.

Note: this kit is equipped with a clear lid.



16. Place the 3/4" spacer under the core support rod and using the M8x40mm bolt and washer secure the rod to the vehicle. Reconnect the negative side of the battery.



Testing & Warranty Info:

1. Engage parking brake and start your engine. To ensure that the system was installed properly, listen for abnormal noises. If an air leak is detected, re-inspect hoses and connections as they may need to be tightened.
2. We recommend that you keep your stock (OEM) intake system in the event that is required in the future.
3. In order to maintain proper warranty, all connections and components must be checked periodically for alignment, re-tightening of all the connections and cleaning. Failure to do so may void your warranty.
4. We recommend that you only use S&B oil and cleaner products to service your filter. Using any other manufacturer's products may void your warranty.

Smog Certification Note:

The California Air Resource Board (CARB) requires that an E.O. identification label be applied to the vehicle in order to pass a smog check inspection when installing a High Performance Intake Kit.

You must place the E.O. label provided on or near the intake kit after installation so that the smog technician can easily verify the O.E. number during the smog certification process.

RESTORE YOUR HIGH PERFORMANCE FILTER

S&B'S Precision Cleaning & Oiling Kit allows vehicle owners to properly maintain their high performance air filters by precisely applying the correct amount of oil. The clearly marked bottle and easy-to-use applicator allow the user to measure and apply the proper amount of oil for each application. S&B has conducted extensive testing with the Precision Cleaning Kit to ensure that it can be used on most cotton high performance filters available today.

Order online today at www.sbfilters.com
or through your local S&B Distributor

PRECISION CLEANING & OILING KIT



Part No. 88-0005

787 S. Wanamaker Ave, Ontario, CA 91761
(909) 947-0015 Phone • (909) 947-0603 Fax
www.sbfilters.com