



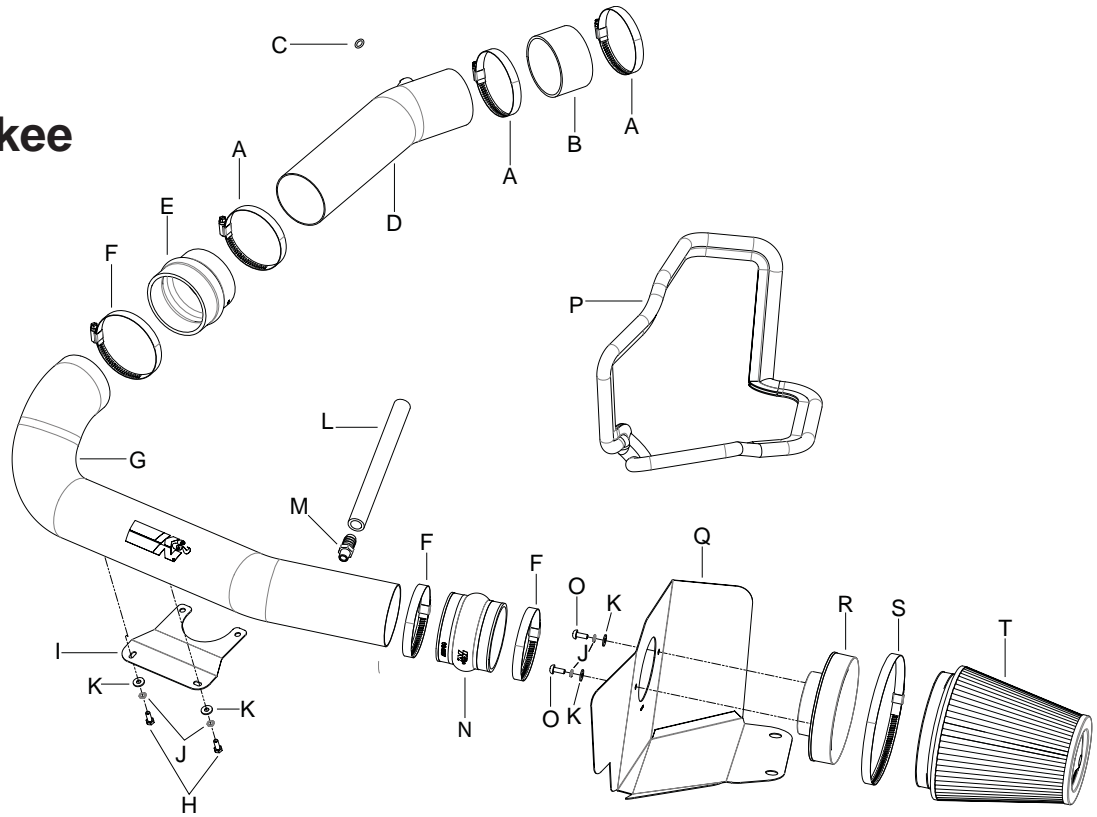
INSTALLATION INSTRUCTIONS

77-1560 DODGE / JEEP 2011 Durango / Grand Cherokee V6-3.6L

NOTE: This kit was not designed to fit vehicles with a body lift.

TOOLS NEEDED:

- Flat Blade Screwdriver
- Ratchet
- Extension
- 10mm Socket
- 4mm Allen Wrench
- Pliers
- Knife



PARTS LIST:

Description	Qty.	Part #	Description	Qty.	Part #	Description	Qty.	Part #
A Hose Clamp #52	3	08610	H Bolt, 6MM-1.00 X 16MM, SS	2	07812	O Bolt; M6 X 1.00 X 16MM, BtnHd. SS	2	07730
B Hose; 3-1/4" ID X 2"L Reinforced	1	08690	I Bracket; Flat, 77-1560, STL, TB/PC	1	083150	P Edge Trim	1	102480
C O-Ring; 3/8" ID X 9/16" OD X 3/32"	1	08347	J Washer, M6 Split Lock Zinc	4	1-3025	Q Heat Shield	1	074087
D Intake Tube (A)	1	27446	K Washer, 6MM Flat, SS	4	08269	R Adapter; Universal, 6" Filter 3.5"	1	21512-1
E Hose; Hump 3.25/3.50 X 3.00"	1	5-576	L Hose; 5/8" ID X 9-3/4" L	1	084047	S Hose Clamp #104	1	08697
F Hose Clamp #56	3	08620	M Vent; STRT, 5/8 Barbed 1/4 NPT	1	08911	T Air Filter	1	RF-1041
G Intake Tube (B)	1	27447	N Hose; 3-1/2" ID X 3"L Hump Molded	1	084057			

NOTE: FAILURE TO FOLLOW INSTALLATION INSTRUCTIONS AND NOT USING THE PROVIDED HARDWARE MAY DAMAGE THE INTAKE TUBE, THROTTLE BODY AND ENGINE.

TO START:

1. Turn off the ignition and disconnect the negative battery cable.

NOTE: Disconnecting the negative battery cable erases pre-programmed electronic memories. Write down all memory settings before disconnecting the negative battery cable. Some radios will require an anti-theft code to be entered after the battery is reconnected. The anti-theft code is typically supplied with your owner's manual. In the event your vehicles' anti-theft code cannot be recovered, contact an authorized dealership to obtain your vehicles anti-theft code.



2. Lift up the engine cover to unhook it from the mounting grommets and then remove the engine cover from the engine.



3. Disconnect the inlet air temperature sensor electrical connection.



4. Disconnect the crankcase vent tube from the airbox as shown.



5. Release the two clips that secure the upper airbox.



6. Remove the intake tube and upper airbox from the vehicle as shown.
NOTE: The intake tube is mounted in two locations with grommets.



7. Unhook the trim seal from the fresh air intake scoop.



8. Lift up the lower airbox to dislodge it from the mounting grommets and then remove the lower airbox from the vehicle.

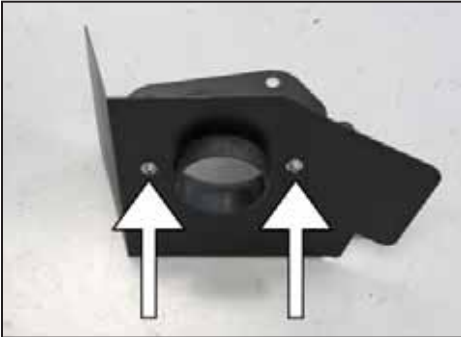
NOTE: K&N Engineering, Inc., recommends that customers do not discard factory air intake.



9. Remove the two nuts that secure the air injection pump to the mounting bracket. Gently set the air injection pump aside.



10. Install the provided tube mounting bracket (083150) onto the air injection pump mounting studs, reinstall the air injection pump and secure with the factory mounting nuts from step #9.



11. Install the filter adapter into the heat shield and secure with the provided hardware.



12. Install the provided edge trim onto the heat shield as shown.

NOTE: Some trimming of the edge trim will be necessary.



13. Remove two of the airbox mounting grommets from the factory airbox.



14. Install the two airbox mounting grommets into the heat shield as shown.



15. Install the K&N® air filter onto the filter adapter and secure with the provided hose clamp.



16. Set the heat shield/filter assembly into position so that the mounting grommets slide over the outer airbox mounting studs.



17. Remove the Inlet air temperature sensor from the factory intake tube.

NOTE: The sensor rotates counter clockwise ¼ turn and then pulls out. The inlet air temperature sensor is very fragile.



18. Remove the factory O-ring from the inlet air temperature sensor and replace with the O-ring provided.



19. Install the inlet air temperature sensor into the K&N® intake tube as shown.



20. Install the provided ¼ npt vent fitting into the K&N® intake tube #27447 as shown.



21. Install the provided hump hose (084057) onto to the filter adapter and secure with provided hose clamp.



22. Install the provided silicone hose (08690) onto the throttle body and secure with the provided hose clamp.



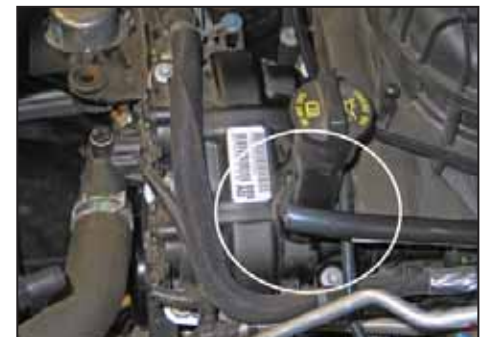
23. Slide the provided silicone hump hose (5-576) all the way onto the K&N® intake tube #27446 as shown.



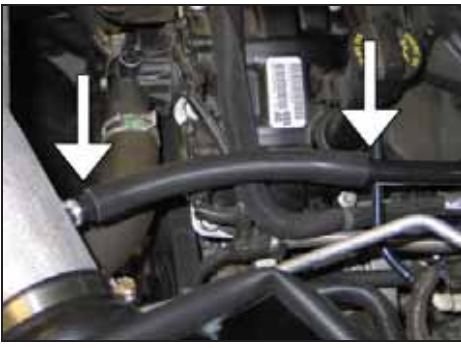
24. Install the K&N® intake tube #27447 into the silicone hose and onto the mounting bracket so that the tube mounting studs align with the mounting holes in the bracket. Secure the tube with the provided hardware and hose clamp but do not completely tighten at this time. Install the K&N® intake tube into the throttle body's silicone hose and align the silicone hump hose with the already installed K&N® intake tube. Slide the silicone hose into position on the intake tubes and secure with the provided hose clamps.



25. Reconnect the inlet air temperature sensor electrical connection.



26. Measure the crankcase vent tube 5" from the end and then cut off the end with a knife.



27. Install the provided crankcase vent hose onto the vent fitting installed into the K&N® intake tube, then connect the open end onto the crankcase vent tube cut in the previous step.



28. Adjust the intake kit for proper fit and then secure the mounting hardware and hose clamps. Reinstall the factory engine cover.



29. Reconnect the vehicle's negative battery cable. Double check to make sure everything is tight and properly positioned before starting the vehicle.

30. It will be necessary for all K&N® high flow intake systems to be checked periodically for realignment, clearance and tightening of all connections. Failure to follow the above instructions or proper maintenance may void warranty.

ROAD TESTING:

1. Start the engine with the transmission in neutral or park, and the parking brake engaged. Listen for air leaks or odd noises. For air leaks secure hoses and connections. For odd noises, find cause and repair before proceeding. This kit will function identically to the factory system except for being louder and much more responsive.
2. Test drive the vehicle. Listen for odd noises or rattles and fix as necessary.
3. If road test is fine, you can now enjoy the added power and performance from your kit.
4. K&N Engineering, Inc., suggests checking the air filter element periodically for excessive dirt build-up. When the element becomes covered in dirt (or once a year), service it according to the instructions on the Recharger® service kit, part number 99-5050 or 99-5000.

STREET LEGAL IN MOST STATES

**NOT LEGAL FOR USE IN CA & OTHER STATES
ADOPTING CA EMISSIONS STANDARDS**

See our catalog or knfilters.com for CARB status on each part for a specific vehicle

* FREE K&N® decal To register your warranty, please see us online at knfilters.com/register. FREE K&N® decal *