



**1984-1993 Jeep Cherokee
Transfer Case Lowering Kit
Part # TCL30**

Contents:

Part #	Description	Qty
TCL10SX6-S	TRANSFER CASE LOWERING SPACER 1X1.5X6	2
10MMX50MMB	10 X 50 METRIC BOLT/10.9	4
38LW	3/8 LOCK WASHER	4
38SAEW	3/8 SAE WASHER	4
LT100	THREAD LOCK 427 1 ML TUBE	1
TCL24-B	TRANSFER CASE LINKAGE BRACKET	1
14X1FTB	1/4 X 1 FINE THD BOLT G8	2
14FTN	1/4-28 FINE N/I LOCK NUT	2
14SAEW	1/4 SAE WASHER	2

Installation Instruction:

1. Park vehicle on flat, level surface. Block the front and rear of the front tires.
2. Place the transmission in neutral.
3. Loosen the engine mount bolts about 1/2 turn.
4. Support the transfer case cross member with a transmission or floor jack. Remove the 2 bolts, 2 nuts, and 2 studs that hold the cross member to the frame.
5. Lower the cross member slowly approximately 1 1/8".
6. Place the 1"x1 1/2" spacers, supplied in this kit, between the frame and the cross member so that the edge of the spacers are nearly flush with the ends of the cross member and be sure that all the mounting holes are lined up.
7. Slowly raise the jack up to firmly hold the spacers in place. Using the new bolts furnished in this kit, place a lock washer on the bolt first, then a flat washer second. With everything in position, place a drop of thread lock retaining compound on the threads of each bolt supplied in this kit. Insert the new bolts and torque to 33 ft-lbs.
8. Remove the jack and set aside.
9. Re-torque the bolts loosened in step 3. The engine mount to block bolts; torque to 45 ft-lbs. The engine mount to frame bolts; torque to 30 ft-lbs. The thru bolts; torque to 48 ft-lbs.
10. Now install the transfer case linkage bracket. See back of this page for instructions.

TRANSFER CASE PIVOT BRACKET:

1. Install the new transfer case linkage pivot drop bracket to stock pivot pivot bracket using stock screws. Using the two 1/4 x 1" bolts with a flat washer and self locking nut, bolt the ball swivel bracket (arrow in photo #1) to new drop bracket (bracket now has two sets of holes: bottom holes for 4" lift as shown or next to bottom for 2 1/2" lift).
2. Placing pivot bracket back in location, start end of rod through ball swivel. Now bolt bracket into location with original hardware (photo #2).
3. Check to make sure that the transfer case will fully engage at each end of the shifter travel. If linkage adjustment id required, see next step.
4. Check the transfer case shifter to see if it will move to 4l. If not, the linkage will need adjusting as follows. Place the shifter in 4l, loosen adjustment bolt ("a" arrow in picture #18), and push the linkage ("b" arrow in picture #18) forward until it stops. Now retighten adjustment bolt. Check to be sure 4wd works properly.
5. On 5 speed models, engage the clutch and check the transmission shifter to see if it will go into 2nd gear. If not, the shifter housing on the floor will need trimming. Remove center console, pull back carpet, remove the screws holding shifter boot to floor and trim or grind floor board at arrow in picture #19 until sufficient clearance is obtained. Shift through each gear to check clearance at this time. Now reinstall boot, carpet and console.

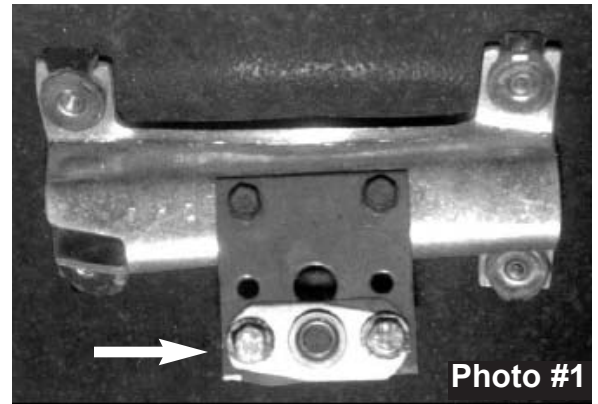


Photo #1

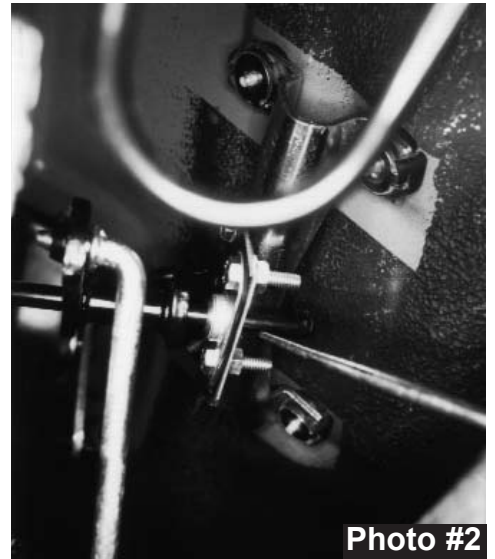


Photo #2



Photo #3

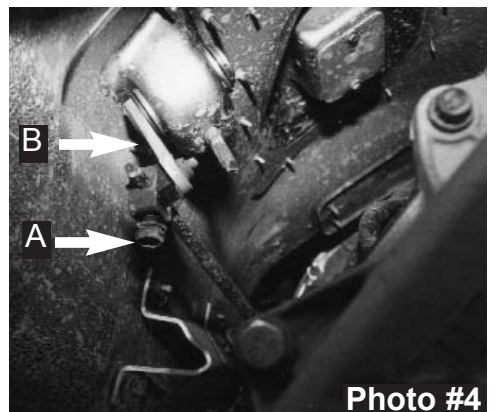


Photo #4

Seat Belts Save Lives, Please Wear Your Seat Belt.