



INSTALLATION INSTRUCTIONS

77-1563 DODGE / JEEP 2011 Durango / Cherokee V8-5.7L

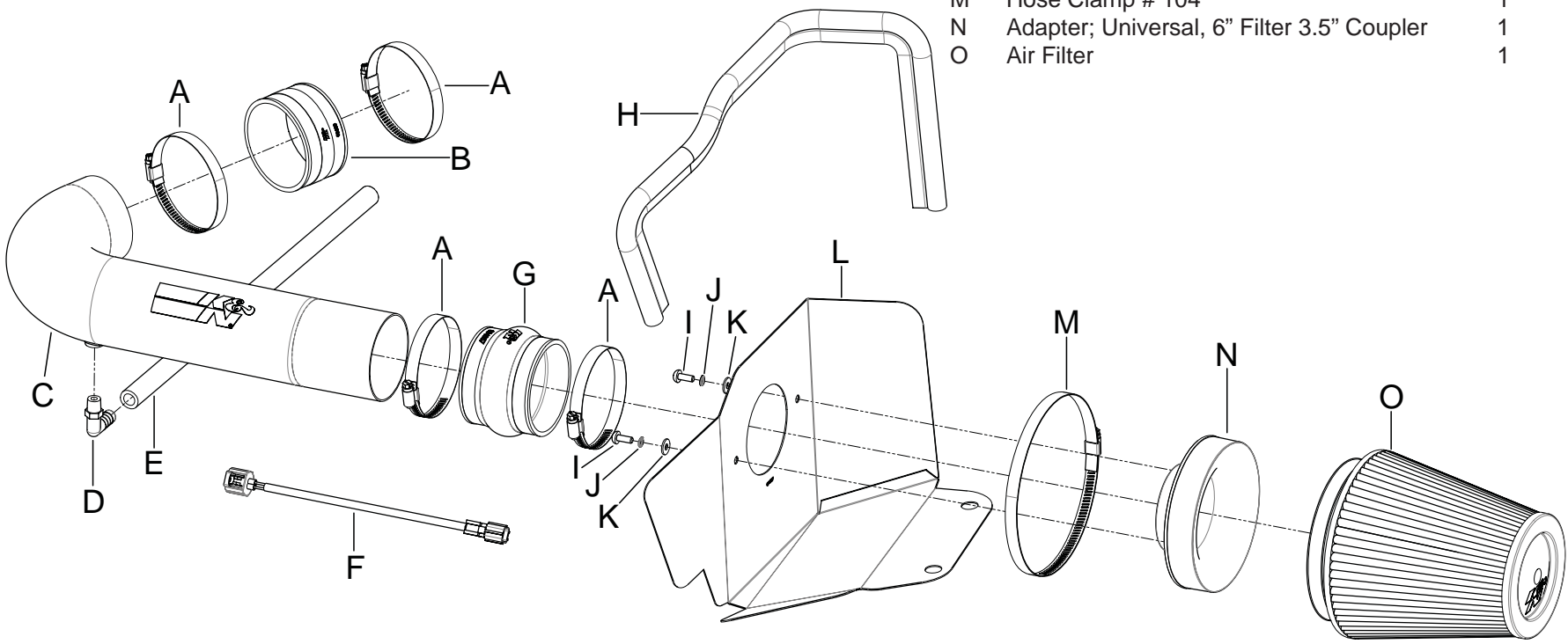
NOTE: This kit was not designed to fit vehicles with a body lift.

TOOLS NEEDED:

- 4mm Allen Wrench
- 10mm Socket
- Extension
- Ratchet

PARTS LIST:

	Description	Qty.	Part #
A	Hose Clamp #56	4	08620
B	Hose; 3-1/2" ID X 2"L Molded	1	08630
C	Intake Tube	1	27491
D	90 DEG, 1/2" Hose, 1/4 NPT, Blk. Plastic	1	08110FK
E	Hose; 1/2" ID X 19"L	1	084075
F	Extension Harness; Dodge IAT	1	21680
G	Hose; 3-1/2" ID X 3"L Hump Molded	1	084057
H	Edge Trim (30")	1	102489
I	Bolt; M6 X 1.00 X 16MM, Buttonhead, SS	2	07730
J	Washer; M6 Split Lock Zinc	2	1-3025
K	Washer; 6MM Flat, SS	2	08269
L	Heat Shield	1	074087
M	Hose Clamp # 104	1	08697
N	Adapter; Universal, 6" Filter 3.5" Coupler	1	21512-1
O	Air Filter	1	RF-1041



NOTE: FAILURE TO FOLLOW INSTALLATION INSTRUCTIONS AND NOT USING THE PROVIDED HARDWARE MAY DAMAGE THE INTAKE TUBE, THROTTLE BODY AND ENGINE.

TO START:

1. Turn off the ignition and disconnect the negative battery cable.

NOTE: Disconnecting the negative battery cable erases pre-programmed electronic memories. Write down all memory settings before disconnecting the negative battery cable. Some radios will require an anti-theft code to be entered after the battery is reconnected. The anti-theft code is typically supplied with your owner's manual. In the event your vehicles' anti-theft code cannot be recovered, contact an authorized dealership to obtain your vehicles anti-theft code.



2. Lift up the engine cover to dislodge it from the mounting grommets and remove it from the vehicle.



3. Remove the intake plenum mounting bolt shown and loosen the intake tube hose clamp.



4. Disconnect the inlet air temperature air sensor electrical connection.



5. Disconnect the crankcase vent hose from the valve cover port.



6. Release the two upper airbox retaining clips.



7. Remove the upper airbox and intake tube assembly.



8. Unhook the sealing trim from the fresh air intake scoop.



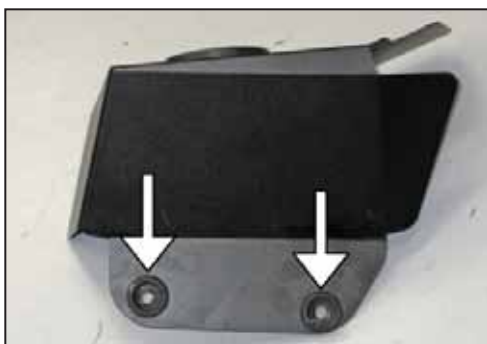
9. Lift up the lower airbox to dislodge it from the mounting grommets and then remove the lower airbox from the vehicle.
NOTE: K&N Engineering, Inc., recommends that customers do not discard factory air intake.



10. Install the filter adapter into the heat shield and secure with the provided hardware.



11. Remove two of the factory airbox mounting grommets from the lower airbox.



12. Install the two mounting grommets removed in the previous step into the heat shield as shown.



13. Install the provided edge trim onto the heat shield as shown.

NOTE: Some trimming of the edge trim will be necessary.



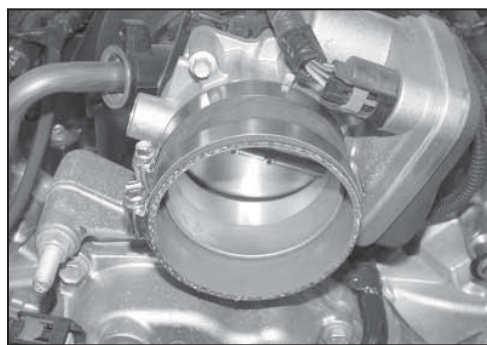
14. Install the provided silicone hump hose (084057) onto the filter adapter and secure with the provided hose clamp.



15. Set the heat shield into the vehicle so that the mounting grommets slide over the factory airbox mounting studs.



16. Install the K&N® air filter onto the adapter and secure with the provided hose clamp.



17. Install the provided silicone hose (08630) onto the throttle body and secure with the provided hose clamp.



18. Release the locking tab and the remove the inlet air temperature sensor from the factory intake tube by twisting counter clockwise.

NOTE: The inlet air temperature sensor is very fragile; take care to avoid damage while handling the sensor.



19. Install the inlet air temperature sensor into the K&N® intake tube.



20. Install the 90° npt fitting into the K&N® intake tube as shown.



21. Install the K&N® intake tube into the silicone hump hose and then into the silicone hose at the throttle body, secure the intake tube with the provided hose clamp.



22. Install the crankcase vent hose onto the 90° vent fitting and then attach the open end to the valve cover port.



23. Connect the inlet air temperature sensor extension harness into the factory electrical connection and then connect the other end into the inlet air temperature sensor as shown.



24. Reinstall the engine cover.



25. Reconnect the vehicle's negative battery cable. Double check to make sure everything is tight and properly positioned before starting the vehicle.

26. It will be necessary for all K&N® high flow intake systems to be checked periodically for realignment, clearance and tightening of all connections. Failure to follow the above instructions or proper maintenance may void warranty.

ROAD TESTING:

1. Start the engine with the transmission in neutral or park, and the parking brake engaged. Listen for air leaks or odd noises. For air leaks secure hoses and connections. For odd noises, find cause and repair before proceeding. This kit will function identically to the factory system except for being louder and much more responsive.

2. Test drive the vehicle. Listen for odd noises or rattles and fix as necessary.

3. If road test is fine, you can now enjoy the added power and performance from your kit.

4. K&N Engineering, Inc., suggests checking the air filter element periodically for excessive dirt build-up. When the element becomes covered in dirt (or once a year), service it according to the instructions on the Recharger® service kit, part number 99-5050 or 99-5000.

STREET LEGAL IN MOST STATES

**NOT LEGAL FOR USE IN CA & OTHER STATES
ADOPTING CA EMISSIONS STANDARDS**

See our catalog or knfilters.com for CARB status on each part for a specific vehicle

* FREE K&N® decal To register your warranty, please see us online at knfilters.com/register. FREE K&N® decal *