



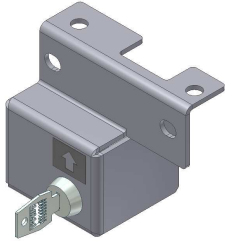
# INSTALLATION INSTRUCTIONS

## JEEP 2007-Current JK Hood Lock #292

Call (970) 564-1762 for Technical Support

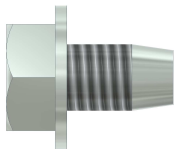
Please read and fill out the enclosed warranty registration card to activate your warranty.

### PARTS CHECKLIST

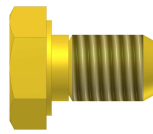


#1 Hood Lock

### SHIPPING PACKAGE CHECKLIST



#3.1 - (2) 5/16-18 x 1/2"  
THREAD CUTTING BOLTS



#3.2 - (2) 5/16-18 x 1/2"  
BOLTS

### TOOLS NEEDED

- 1/2" socket and wrench
- Body Trim tool

## ATTENTION:

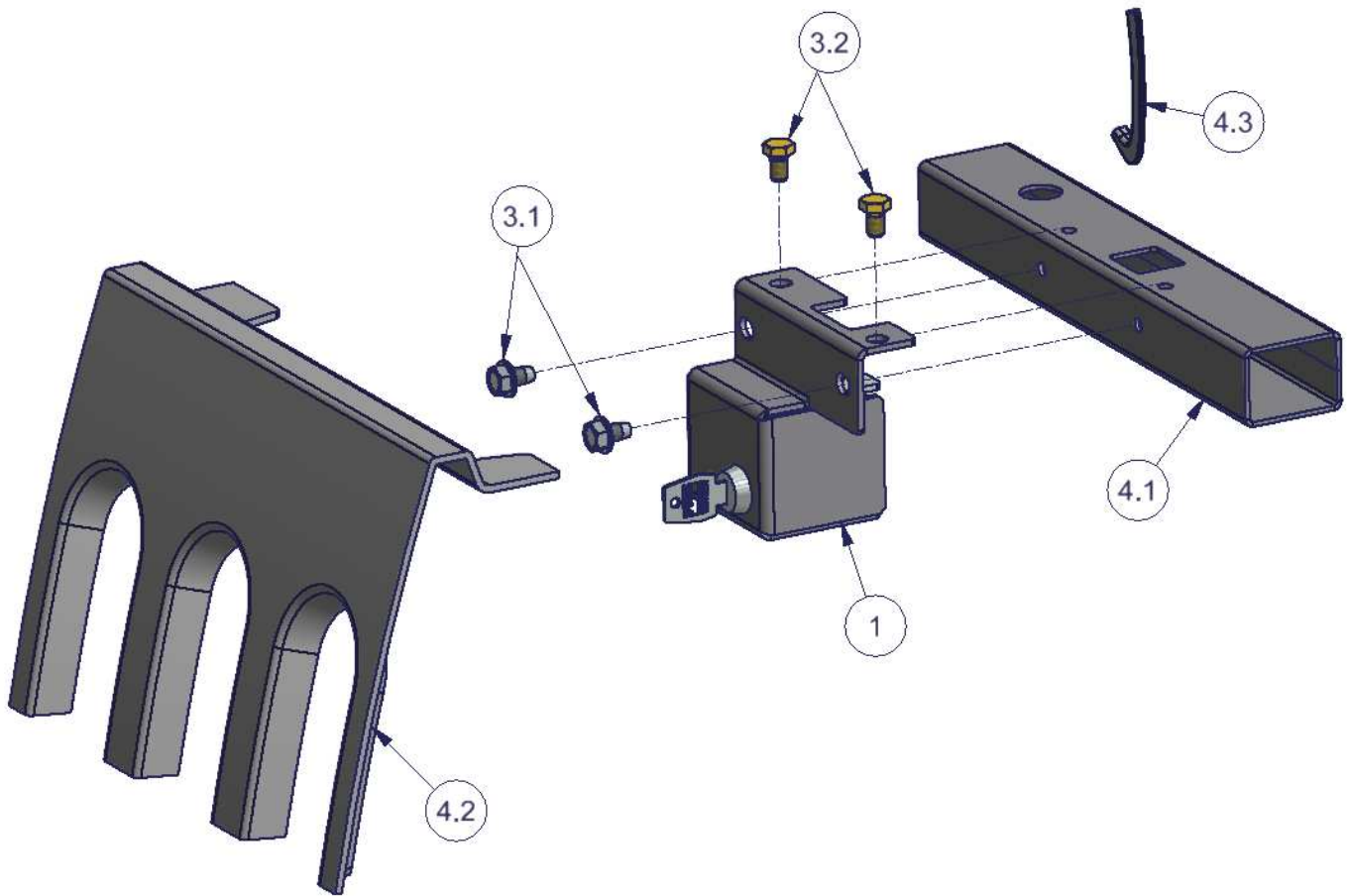
- ***THIS HOOD LOCK WAS DESIGNED FOR A STOCK OEM VEHICLE, ANY MODIFICATIONS MADE TO THE GRILLE, RADIATOR, ETC MAY AFFECT THE FIT.***

### PLEASE READ ALL INSTRUCTIONS THOROUGHLY BEFORE STARTING INSTALLATION.

1. IMPORTANT! Make sure the vehicle is parked on a flat surface, placed in park, and the emergency brake is activated.
2. Raise the vehicle hood. Using a body trim tool, pry up the center head on each of the (6) OEM push-pin retainers along the top of the #4.2 OEM plastic grille, and remove the (6) push-pin retainers. Pulling the grille carefully but firmly forward, un-clip the (6) OEM metal spring clips along the bottom of the grille. **\*\*UNPLUG THE OEM TURN SIGNAL/MARKER LIGHTS ON BOTH SIDES OF THE VEHICLE.** Remove the grille from the vehicle. Refer to your vehicles factory service manual for additional instructions on removing the OEM grille.
3. Using a body trim tool, pry the (2) push-pin retainers near the center of the radiator bar which are supporting the OEM wire harness to the #4.1 OEM radiator support. This will facilitate the installation of the #1 Hood Lock.
4. Install the #3.1 Thread Cutting Bolts in the pre-existing (2) mounting holes along the top of the #4.1 OEM radiator support. This will cut the threads for these holes. Remove the #3.1 Thread Cutting Bolts.  
  
**\*\*NOTE: DO NOT OVER TIGHTEN THE BOLTS OR YOU MIGHT STRIP THE THREADS WHICH WERE CUT INTO THE #4.1 RADIATOR SUPPORT.**
5. Install the #1 Hood Lock onto the #4.1 OEM radiator support and fasten at the front mounting holes with the #3.1 Thread Cutting Bolts. Tighten fasteners. (Figure 1)

6. Install the #3.2 bolts into the top mounting holes in the #1 Hood Lock and the threaded holes in the #4.1 radiator support. Tighten fasteners. (Figure 1) **\*\*BE SURE TO USE THE #3.2 BOLTS AT THE TOP OF THE RADIATOR SUPPORT FOR CLEARANCE TO THE #4.2 OEM GRILLE.**
7. With the #1 Hood Lock in the un-locked position (key turned counter-clockwise), lower the vehicle hood and allow the #4.3 OEM hood latch to engage the #4.1 radiator support. Lock the #1 Hood Lock and test the lock has engaged the #4.3 hood latch securely by pulling firmly up on the vehicle hood. You should not be able to lift the vehicle hood. Unlock and raise the hood again.  
  
**\*\*Note:** It may be necessary to push the vehicle hood downward when locking the #1 Hood Lock in order for the lock cam to align with the #4.3 hood latch.
8. Re-install the OEM wire harness by re-inserting the OEM push-pins removed in step 3.
9. Re-install the #4.2 OEM grille by fastening the lower spring clips and securing with the upper push-pin retainers. Reconnect the wiring plugs for both turn signal/marker lights.

**FIGURE 1**



Call (970)564-1762 for Technical Support