



Protecting Your Adventure Lifestyle

Warrior Products, Inc.
16850 SW Upper Boones Ferry Rd
Ste. A
Durham, OR 97224
Phone (888) 220-6861
Fax (503) 692-0364
sales@warriorproducts.com

UNIVERSAL WELD-ON D-RING MOUNT KIT

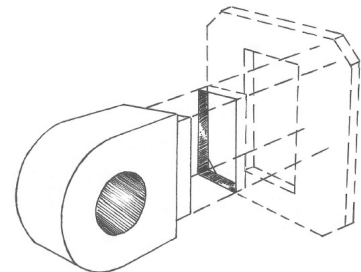
INSTALLATION INSTRUCTIONS

WAR 868

NOTE: These brackets may only be used as a ‘weld-on’ application. If you are not confident in your welding abilities, please seek out a qualified welder to install these for you. The pull rating of the weld-on d-ring mounts are only limited to the pull rating of the surface you’re mounting them to and to the pull rating of the D-ring shackle you’re utilizing with them.

Weld-On Installation:

1. Locate and identify a strong, flat surface on your bumper to mount the brackets, preferably as close to frame mounting positions as the back plates will allow. This kit requires a ‘through-surface’ mounting configuration, so be certain there is enough clearance behind the surface you’re welding them to.
2. Carefully position the D-rings so they are straight and symmetrical then mark the rectangular .625” x 1.625” openings you will be making for the through-surface mounting.
3. After the openings have been made and the mounts test-fitted, confirmed and surface prepped, place the D-ring mount tab through the opening and tack weld into place on the outside. Do not fully weld them on just yet as you will need to tack the back plate on for positioning before final welding.
4. Place the back plate centered onto the D-ring mount tab on the inside surface. The back plates’ center opening is oversized approximately 1/8” to allow a fill-weld for utmost strength of the D-ring mount. Tack weld into place.
5. Once the D-ring and back plate locations have been set to your preferences, fully weld around the beveled section on the outside surface. Move to the inside and fully weld in the 1/8” gap between the back plate and the D-ring tab. Finish by welding a few beads around the outside perimeter of the back plates.
6. Spray any bare metal with some protective paint and once dry, install your shackle/clevis into the D-rings. Your installation is now complete.



If you need further assistance installing your product, please contact us by email at techsupport@warriorproducts.com or call us at (888) 220-6861.

THANK YOU FOR PURCHASING WARRIOR PRODUCTS

QUALITY



INTEGRITY



INNOVATION



SERVICE