



3651 N. Hwy 89 • Chino Valley, AZ 86323
(928) 636-7080 • www.p-a-g.net

JEEP WRANGLER (JK) FULL / MID WIDTH FRONT WINCH BUMPER INSTALLATION INSTRUCTIONS 2007 - 2013

**CENTERED FAIRLEAD FOR REGULAR
WINCHES KIT # 83228 / 83230**

**OFFSET FAIRLEAD FOR LARGER WINCHES
KIT # 83227 / 83229 (PowerPlant)**

2012 Models Require 87046 Relocation Kit

⚠ WARNING
Before you install this kit, read and understand all instructions, warnings, cautions, and notes in this instruction sheet and in the vehicle owner's manual.

⚠ CAUTION
Proper installation of this kit requires knowledge of the factory recommended procedures for removal and installation of original equipment components. We recommend that the factory shop manual and any special tools needed to service your vehicle be on hand during the installation. Installation of this kit without proper knowledge of the factory recommended procedures may affect the performance of these components and the safety of the vehicle. We strongly recommend that a certified mechanic familiar with the installation of similar components install this kit.

⚠ WARNING
Many states and municipalities have laws restricting bumper heights and vehicle lifts. Consult state and local laws to determine if the changes you intend to make to the vehicle comply with the law.

⚠ WARNING
Always wear eye protection when operating power tools.

Before Starting Installation

NOTE
Kit parts are prefaced by the word *kit* and appear in **bold print**.

1. Carefully read all warnings and instructions completely before beginning.
2. Instructions are written for installation of both centered (83228/83230) and offset (83227/83229) bumper. Pay close attention for minor differences during install.
3. Verify all parts have been received in this kit by checking the parts list at the end of this document.

NOTE
If parts are missing from kit, please be prepared to provide the following information:
1. **Name** of purchase location
2. **Bar Code** on side of box
3. **Date** above bar code
4. **Date** inside box cover
5. **Inspector #** from inside box cover

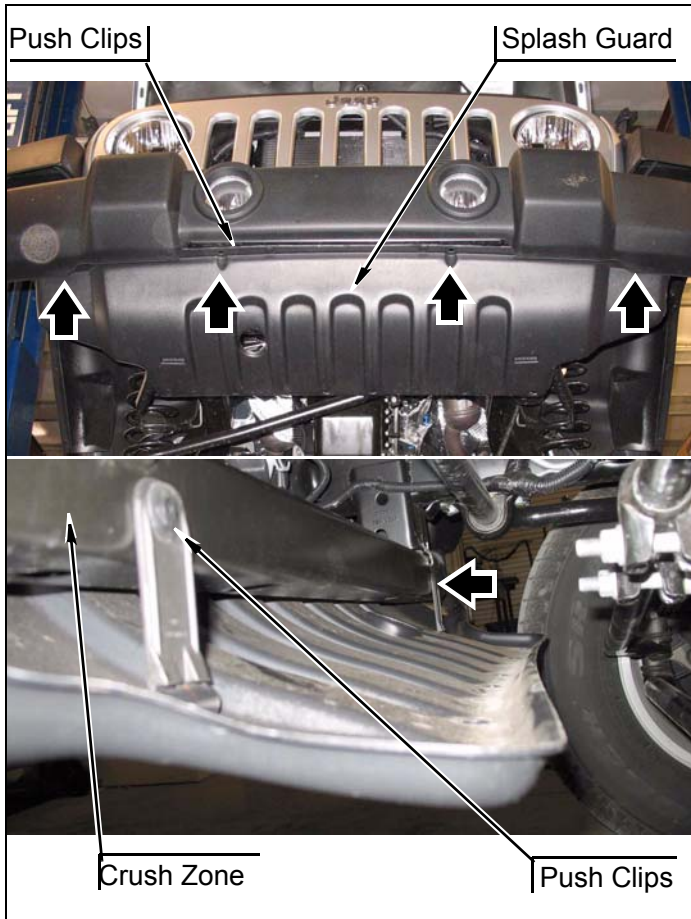
4. **Only install this kit on the vehicle for which it is specified.** If anytime during the installation you encounter something different from what is outlined in the instructions, call technical support at (928) 636-7080.
5. Park vehicle on a clean, dry, flat, level surface and block tires so vehicle cannot roll in either direction.

Engine Compartment

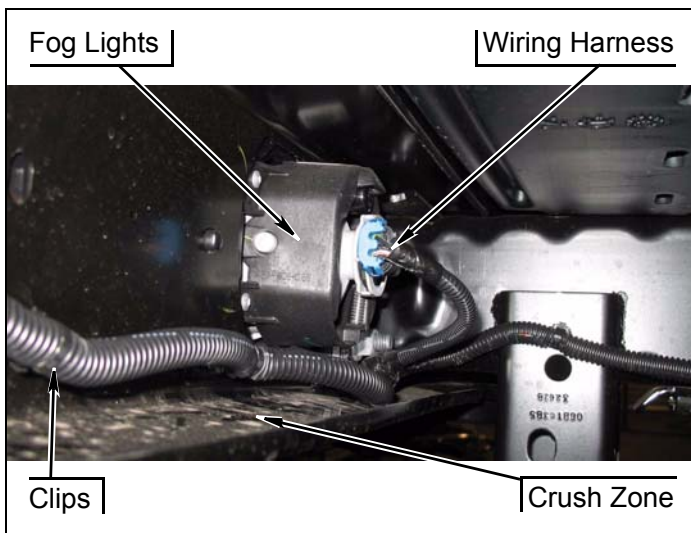
1. Disconnect both battery cables. Disconnect negative cable first, then positive cable.

Prepare to Install Bumper

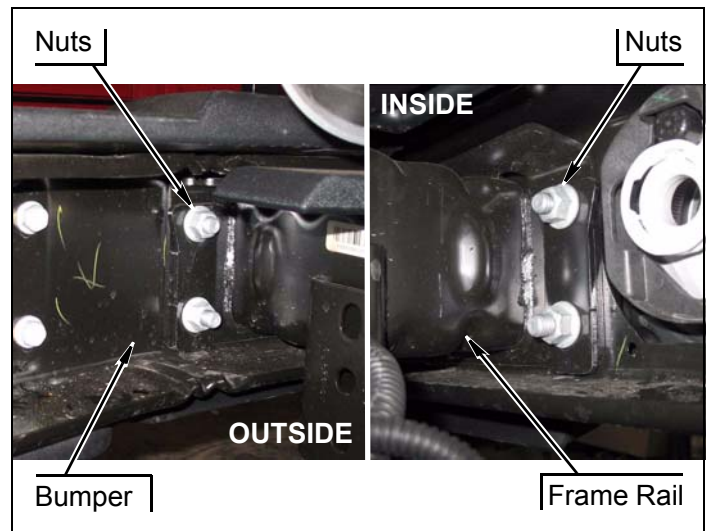
1. Remove four bolts, two push clips and lower splash guard from lower crush zone and front bumper.



2. Disconnect fog lights wiring harnesses from fog lights if equipped.
3. Remove wiring harness and clips from lower crush zone.



4. Remove four nuts, four spacer plates and front bumper from frame horns.



5. Remove eight screws and two fog lights from front bumper.

Install Bumper

NOTE

Bumper is designed to work with many Mile Marker and Warn Winches. Check measurements to verify fitment of winches before purchase. In general this bumper will fit smaller-mid sized winches. For larger, such as the WARN PowerPlant, winches bumper P/N #83227/83229 will be needed.

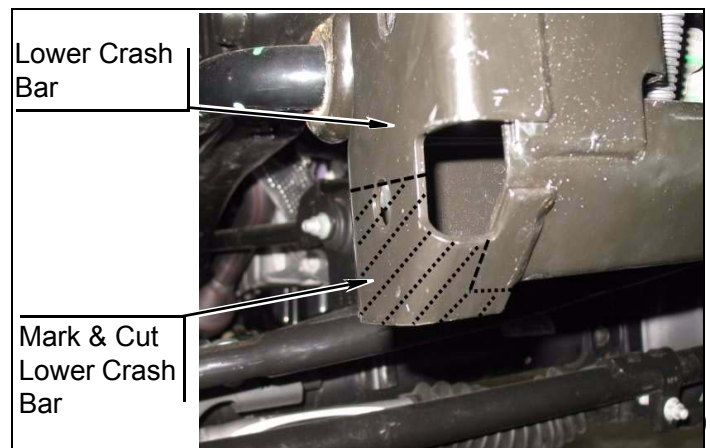
NOTE

Bumper can be installed without winch. Follow directions excluding winch install step directly below.

NOTE

2012 Model: Will require installation steps & *kit 87046 Vacuum Pump Relocation Kit*

1. **Note: 2010 - 2012 Models require a small amount of trimming to lower crash bar.** Mark and trim (using a cut off wheel) a small amount of overhanging sheet metal from lower crash bar so **kit winch bumper** may sit flush on crash bar.

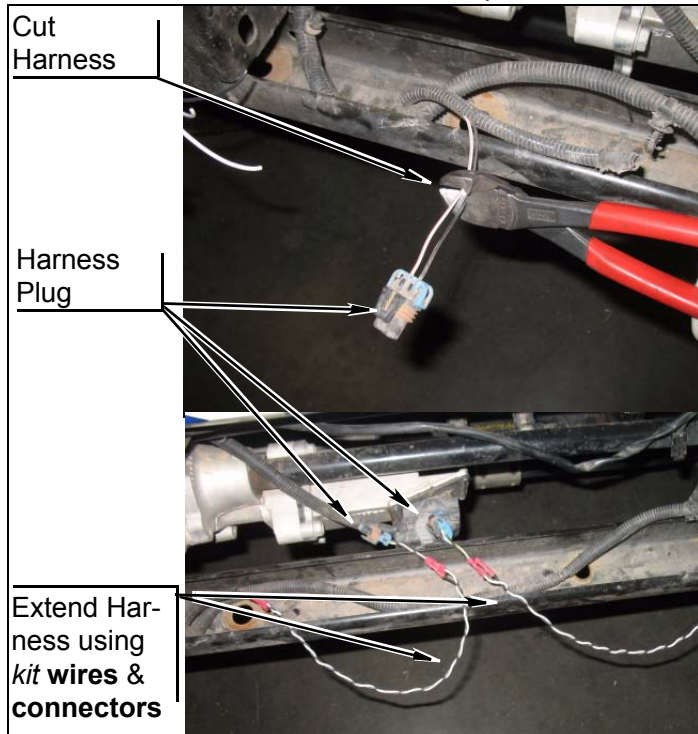


**** 2012 Model:** Will require installation steps & *kit 87046 Vacuum Pump Relocation Kit* at this point in the install

2. Extend OEM fog lamp harnesses

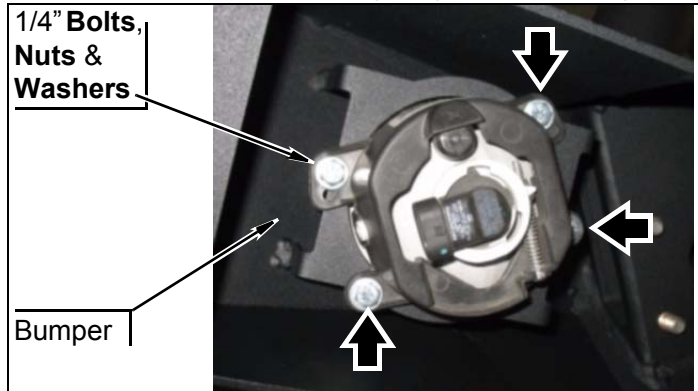
- a. Cut OEM harness approximately 3 inches from the end of each plug. Use a set of wire strippers and remove small amount of insulation from tips of cut wire.
- b. Use four *kit butt connectors (RED)*, per lamp harness, and crimp one *kit butt connector* to end of each stripped wire.
- c. Use half (**18"**) of *kit black & white* wires provided in the *kit* to extend each lamp plug. Strip each end of wire and crimp *kit black & white* wires into place accordingly.

Use *kit wire loom isolator* to cover exposed *kit wires*

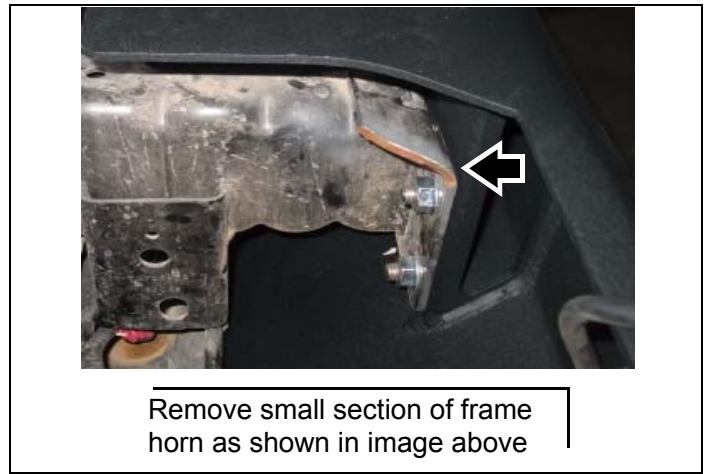


- d. Install OEM fog lamp using four *kit bolts (1/4"-20 x 3/4")*, **flange nuts** and **washers** per OEM fog lamp.

Note: Use 1/4" drill bit to enlarge fog lamp mounting hole.

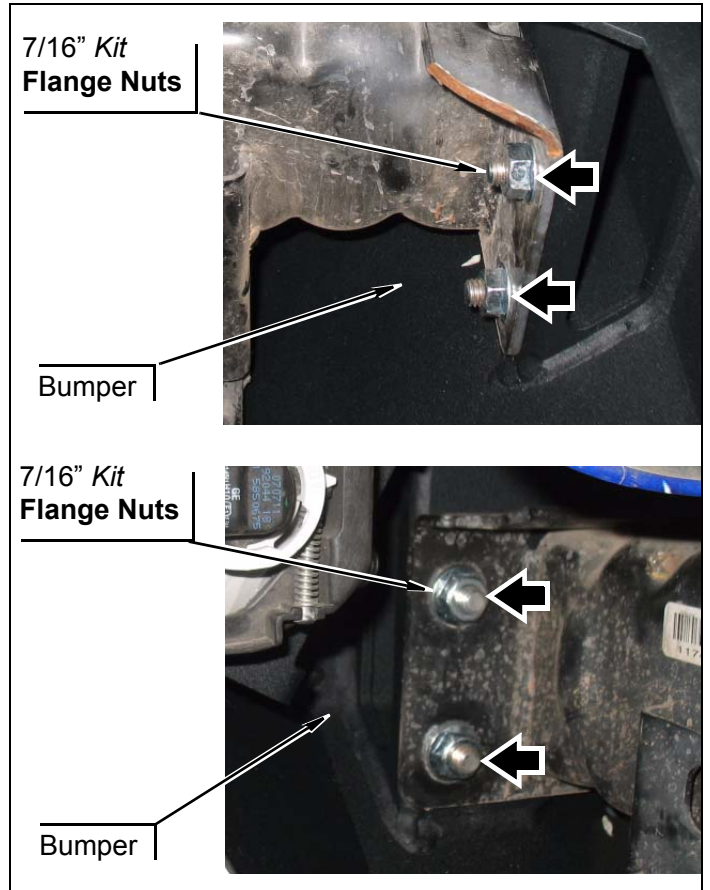


Note: WARN PowerPlant winches will require you to cut a small section off of the drivers inside frame mount as shown below:



3. Installing main bumper.

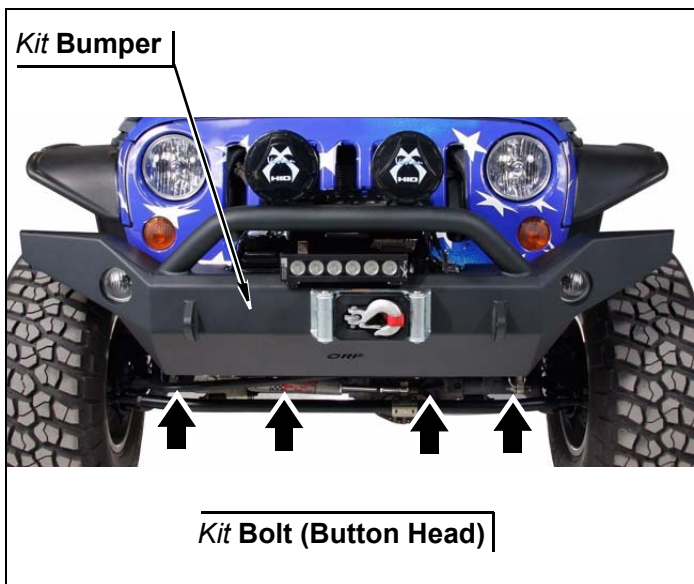
- a. Install bumper using eight *kit flange nuts(7/16")*.



- b. **Note: 2010 & 2012 Models mark and drill passenger side lower crash bar.** Mark and drill (using a 1/2" drill bit) passenger side lower crash bar so **kit bolts** (1/2-13 x 1 1/4" button head) may sit flush through bumper.



- c. Install four **kit bolts** (1/2" x 1 1/4" Button Head) with **large thick washer** and **flange nut** through outer holes on bottom of bumper. (Note: Some models are not equipped with this hole. It will be necessary to mark and drill a 1/2" hole to complete step.)



- d. Tighten all remaining bumper hardware.
- e. Reconnect OEM fog light harness into both fog lamps.
4. If installing winch, consult manufacturers instructions for wiring and other installation and use notes.

After Completing Installation

Engine Compartment

1. Connect both battery cables. Connect positive cable first, then negative cable.

Miscellaneous

1. Check all fasteners to ensure they are tight.
2. Ensure all wires are properly connected and there is ample slack.

⚠WARNING

Retorque all fasteners after 500 miles and after off road use. All body lift components should be visually inspected and fasteners retorqued during routine vehicle servicing.

⚠CAUTION

Performance Automotive Group does not recommend any particular wheel and tire combinations for use with its products and cannot assume responsibility for the customer's choice of wheels and tires. Refer to your owner's manual for recommended tire sizes and warnings related to the use of oversized tires. Larger wheel and tire combinations increase stress and wear on steering and suspension components, which leads to increased maintenance and higher risk for component failure. Larger wheel and tire combinations also alter speedometer calibration, braking effectiveness, center of gravity, and handling characteristics. Consult an experienced local off road shop to find what wheel and tire combinations work best with your vehicle.

NOTE

All warranty information, instruction sheets, and other documents regarding the installation of this product must be retained by the vehicle owner. Information contained in the instructions and on the warranty card will be required for any warranty claims. The vehicle owner needs to understand the modifications made to the vehicle and how they affect vehicle handling and performance. Failure to provide the customer with this information can result in damage to the vehicle and severe personal injury.

Kit Parts List

Qty. Description

1	Bumper
2	D-Rings
1	Hardware Pack
4	Bolt, Button Head (1/2"-13 x 1-1/4")
8	Bolt, Hex Head (1/4"-20 x 3/4")
4	Nut, Flange (1/2"-13)
8	Nut, Flange (7/16"-14)
8	Nut, Flange (1/4"-20)
8	Washer, SAE (1/4"-20)
4	Washer, Large "Special"
8	Connector, 16 Gauge (Red)
1	Wire, 3ft. - 16 Gauge (Black)
1	Wire, 3ft. - 16 Gauge (White)
1	Isolator, 3ft. (Black)