



INSTALLATION INSTRUCTIONS

Universal Security Lockbox #029

Please read and fill out the enclosed warranty registration card to activate your warranty.

For office use only

- RSP60
- SHIPPING PACKAGE
- WARRANTY CARD

Checked by _____

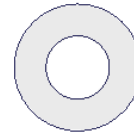
PARTS CHECKLIST



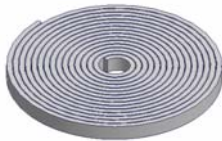
(4) 5/16 x 11/4" BOLTS



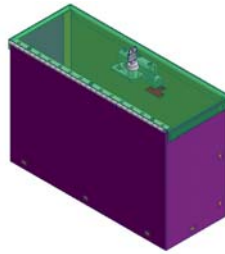
(4) 5/16 NYLOCK NUTS



(8) 5/16" WASHERS



RUBBER SEAL



Tuffy Lockbox #029

TOOLS NEEDED

- Electric drill
- 3/8" Drill bit
- Marker or pencil
- Knife
- 1/2" Socket and ratchet
- 1/2" Wrench
- Silicone sealant (Recommended)

PLEASE READ ALL INSTRUCTIONS THOROUGHLY BEFORE STARTING INSTALLATION.

1. Install rubber seal on lid and between the hinge leaves. Check lock operation.
2. Place the lockbox in the vehicle in the desired mounting location.
3. Using a marker or pencil, mark (4) spots through the 3/8" mounting holes in the box.

WARNING!

Make sure that there is nothing under the vehicle that will be damaged by the drill bit when drilling.

4. Remove the box. Cut the carpet at the (4) marked holes. Using a 3/8" drill bit, drill out the (4) marked spots in the floor.
5. It is recommended to use silicone sealant in any holes drilled in the vehicle to prevent rusting.
6. Fasten down the box using the hardware provided. (For security, it is best to insert the bolts from underneath the vehicle.)

For Technical Support Call (970)564-1762