

Quadratec® QR3 Tubular Rear Bumper

Installation Manual for '55-'06 CJ-5, CJ-7 & Wrangler Vehicles
#12063.02XX



⚠ WARNING ⚠

TO REDUCE RISK OF SERIOUS INJURY OR PROPERTY DAMAGE: READ ALL SAFETY MESSAGES AND UNDERSTAND ALL INSTRUCTIONS AND PROCEDURE NOTICES BEFORE ATTEMPTING TO INSTALL OR USE THIS PRODUCT. FOLLOW ALL INSTRUCTIONS AND WARNINGS WITH PRODUCT & VEHICLE OWNERS MANUAL.

⚠ WARNING ⚠

REGARDING RECEIVERS: SEE PAGE 5 FOR URGENT RECEIVER CAPACITY WARNINGS. DO NOT ALLOW RECEIVER MOUNTED ACCESSORIES (BIKES, ETC.) TO BLOCK VEHICLE MIRRORS OR LIGHTS. READ AND UNDERSTAND ALL CAPACITY WARNINGS.

⚠ CAUTION ⚠

RISK OF EYE INJURY! SAFETY GLASSES MUST BE WORN AT ALL TIMES WHILE INSTALLING OR MAINTAINING THIS PRODUCT. TORQUE AND RECHECK FASTENERS AFTER 250 MILES AND FREQUENTLY THEREAFTER. INSPECT BUMPER, WINCH AND MOUNT BEFORE USE. DO NOT USE IF DAMAGED.

NOTICE

CHECK STATE AND LOCAL HIGHWAY SAFETY LAWS REGARDING PERMITTED BUMPER TYPES AND HEIGHTS.



The Trusted Source

A Few Words About Product Safety:

Your Rear Bumper is intended to enhance the utility and enjoyment of your off road capable vehicle. Before installation, please take a moment to review the following safety information

and installation instructions. Important safety information is generally preceded by one of three signal words indicating the relative risk of injury.

The signal words mean:

⚠ WARNING ⚠	a hazardous situation which, if not avoided, could result in death or serious injury. You CAN be KILLED or SERIOUSLY HURT if you don't follow instructions.
⚠ CAUTION ⚠	a hazardous situation which, if not avoided, could result in minor or moderate injury. You CAN be moderately HURT and also may suffer property damage if you don't follow instructions.
NOTICE	Careful attention is required to this instruction or operation but does generally not relate to personal injury. Damage to your Quadratec® product or other property may result if you don't follow instructions.

Before You Begin Installation:

Congratulations on your purchase of the Quadratec QR3 Tubular Rear Bumper for your Jeep® CJ or Wrangler.

As bumpers tend to be heavy, we strongly suggest you get the help of a friend for steps that involve lifting, locating or holding the bumper during installation.

When unpacking, check to make sure all parts are included and not damaged due to shipping. If any part is missing or broken, please call Customer Service at 800-745-6037 as soon as possible.

Thank you again for your purchase and let's start the installation process.

NOTICE	As you unpack your rear bumper, be careful not to scratch the finish with a knife or razor. We suggest placing the unpacked bumper back into the original box so it does not get scratched before the installation begins. It is highly recommended that a second person assist with the installation of this bumper.
---------------	--

Bumper Care and Maintenance:

This custom fit bumper has been designed for long life and great looks. With proper care, it is designed to provide years of use.

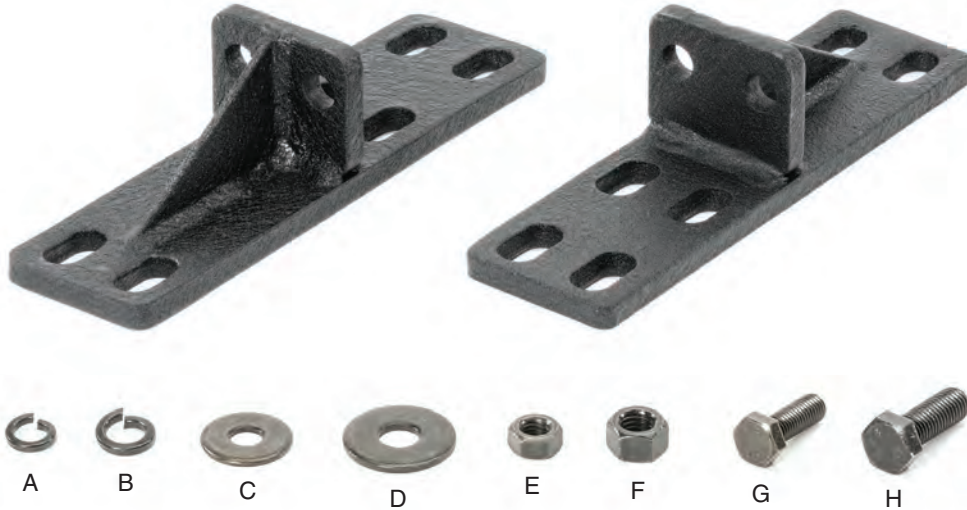
Please see page 10 in this instruction booklet for all suggested care for your Quadratec QR3 Rear Bumper.

Though constructed of only the finest materials, this bumper must be maintained to keep its look while performing under the toughest conditions.



The Trusted Source

Installation Hardware:



PARTS LIST:

QR3 Rear Tube Bumper - QTY 1
REAR MOUNTING BRACKETS - QTY 2
HARDWARE
A) 10mm Lock Washers - QTY 8
B) 12mm Lock Washers - QTY 4
C) 10mm Flat Washers - QTY 16
D) 12mm Flat Washers - QTY 8
E) 10mm Nuts - QTY 8
F) 12mm Nuts - QTY 8
G) 10mm Bolts - QTY 8
H) 12mm Bolts - QTY 4

REQUIRED TOOLS:

Safety Glasses
18mm Socket and Driver
T30 Torx Bit (97-06 models only)
16mm Socket
5/8" Socket
16mm Box End Wrench
18mm Box End Wrench
Power Drill (97-06 models only)
3/16" Drill bit (97-06 models only)
1/2" Drill bit (97-06 models only)
Pencil (97-06 models only)
Torque Wrench

NOTICE

This instruction sheet and the parts list listed above include information on installing your rear tube bumper (only) or a rear tube bumper with the corresponding Quadratec frame mounted hitch. If you are installing your tube bumper WITH a hitch, the mounting brackets included with the tube bumper will not be used.

Required Tools Note: Depending on what bumper you currently have on your Jeep® (factory or after-market) will determine exactly what wrench or socket you will need to remove and install your new Quadratec bumper.

The socket heads listed above are to remove and re-install factory bolts on a 97-06 Wrangler. Some Aftermarket bumpers use an oversized Phillips Head or other sized Hex head bolts.



The Trusted Source

Installation Step One: Remove Stock Bumper

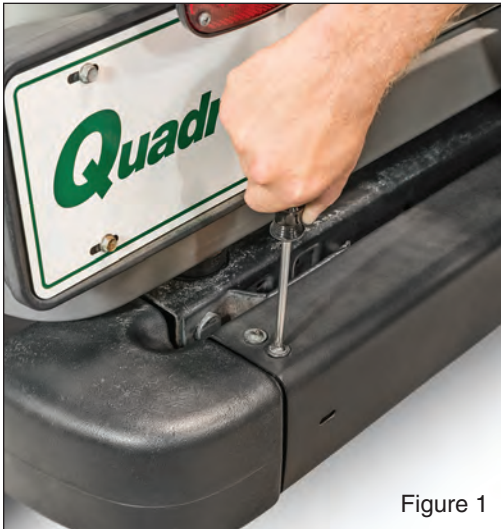


Figure 1



Figure 2

Removing Existing '97-'06 Rear Bumper
Before you start, put on safety glasses. Locate and remove the five T30 Torx Bolts (2 on top, 3 on under side) holding your plastic end caps to the existing

rear bumper (FIG 1). Locate the bolts holding the body mount and bumper bracket to the frame (FIG 2).

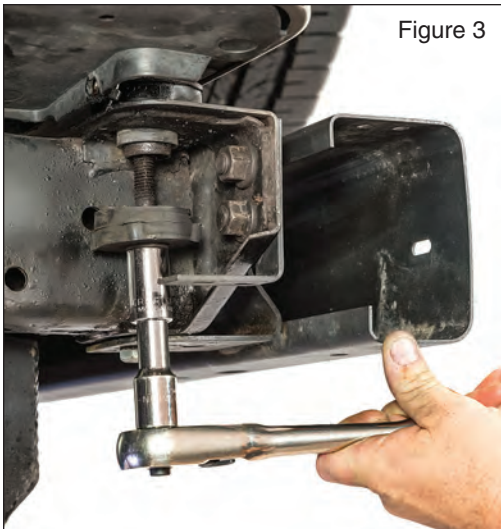


Figure 3



Figure 4

Next, use the 5/8" socket to remove the rear body mount (FIG 3). Finally, use a 18mm socket to remove the nuts

holding the bumper to your Jeep's frame (FIG 4). Repeat these steps for both sides of your Wrangler vehicle.



The Trusted Source

Installation Step One (continued):



Figure 5

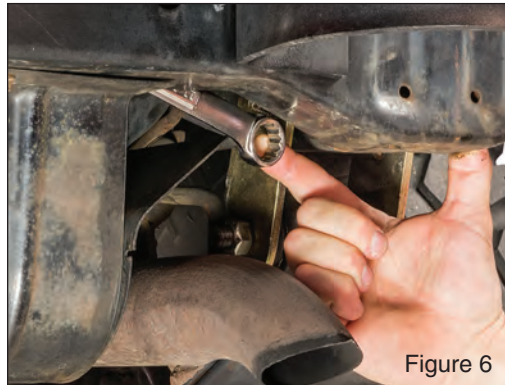


Figure 6

Remove '87-'95 Rear Bumperettes

Put on safety glasses. Locate and remove the four bolts and nuts holding the bumperettes to your Jeeps frame (FIG 5). Our bolts were a 16mm head

and nuts were 18mm. Removal Tip, we inserted the box end wrench into the frame rail as shown for easy removal of the nuts (FIG 6).

Step Two: Install QR3 Rear Bumper

Once existing rear bumper is removed, the next steps will be determined by what model year Jeep® you own and whether you are installing the optional frame mounted Receiver hitch. If you are not installing the optional receiver hitch, you will be installing the included bumper mounting brackets.

NOTE: If you are installing the optional hitch, the mounting brackets for the Rear tube Bumper are a part of the receiver hitch assembly and the mounting brackets included with your Rear Tube Bumper kit will not be used.

Please observe all warnings below:

⚠ WARNING ⚠

**THIS CLASS I RECEIVER:
MAXIMUM TOW WEIGHT 2000 LBS.
MAXIMUM TONGUE WT. 200 LBS.**

⚠ WARNING ⚠

**TO REDUCE RISK OF SERIOUS INJURY OR PROPERTY DAMAGE:
INSTALL ACCORDING TO INSTRUCTIONS. TORQUE AND RECHECK
FASTENERS AFTER 250 MILES AND FREQUENTLY THEREAFTER.
INSPECT AND DO NOT USE RECEIVER/BUMPER IF DAMAGED.**

⚠ WARNING ⚠

**CONSULT & NEVER EXCEED LESSER OF VEHICLE, RECEIVER
OR TRAILER MAXIMUM TOW OR WEIGHT RATINGS.
CONSULT AND FOLLOW ALL LIMITATIONS & WARNINGS IN YOUR
VEHICLE OWNERS MANUAL AND SAFE TOWING SUPPLEMENT.**

⚠ WARNING ⚠

**CHECK STATE AND LOCAL HIGHWAY SAFETY LAWS REGARDING
PERMITTED BUMPER TYPES AND HEIGHTS.**



The Trusted Source

Installation Step Two (continued):



For '55-'95 CJ & Wrangler

The pre-drilled holes in your bumper will line up with mounting bracket/receiver hitch holes. The brackets and or hitch should be centered on the holes



with the vertical mounting tab facing outwards and the supports holding the vertical mounting tab facing inwards towards the center of the Jeep® (Fig 7).



Attach Mounting Brackets For '55-'95

Attach each bracket to the rear frame using (4) 10mm bolts, (8) 10mm Flat Washers, (4) 10mm Lock Washers (Fig 7 & 8) and (4) 10mm nuts per side. Proper bolt, washer and nut position called out in (Fig 9). Do not tighten at this time.

With the mounting brackets loosely installed and centered on vehicle, line up the two tabs on each side of the Tube Bumper to the mounting holes on the mounting brackets (Fig 10). Tighten the bumper mounting brackets to the vehicle to 45 ft/lbs using a torque wrench.



Attaching Receiver Hitch

Attach the receiver hitch to the rear frame using (4) 10mm bolts, (8) 10mm Flat Washers, (4) 10mm Lock Washers and (4) 10mm nuts per side (Fig 11). Proper bolt, washer and nut position called out in (Fig 9). Tighten these bolts/nuts to 45 ft/lbs using a Torque Wrench. Proceed to Step 3. See page 9.



The Trusted Source

Installation Step Two (continued):



Figure 12



Figure 13

For '97-'06 Wrangler TJ Vehicles

The outside pre-drilled holes in your bumper will line up with the outside mounting bracket/receiver hitch holes on your Wrangler. You will need to drill two holes per side for the inside bracket/hitch mount. With the help of

another person, the mounting brackets and or hitch should be centered on the outside holes with the vertical mounting tab facing outwards and the supports holding the vertical mounting tab facing inwards towards the center of the Jeep® (Fig 12 & 13).



Figure 14



Figure 15

With the outside holes of the mounting bracket/hitch centered on the outside holes, mark the center of the inside holes making sure the mounting bracket/hitch is level (Fig 13). Repeat for both sides. Using a 3/16" drill bit, drill a pilot hole being **EXTREMELY** careful not to drill

too deep as the fuel Tank is directly behind bumper (Fig 14). Repeat this procedure for all four marked holes. Then replace the 3/16" drill bit with the 1/2" drill bit and drill out pilot holes using **EXTREME** Care not to drill too deep (Fig 15). Consider using drill stop.

⚠ WARNING ⚠

USE EXTREME CARE WHEN DRILLING INTO THE REAR FRAME OF YOUR VEHICLE. THE GAS TANK IS DIRECTLY BEHIND THE CROSS MEMBER AND CAN BE PUNCTURED IF DRILLING IS TOO DEEP. THERE IS A POTENTIAL FIRE AND SAFETY HAZARD IF FUEL TANK IS PUNCTURED.



The Trusted Source

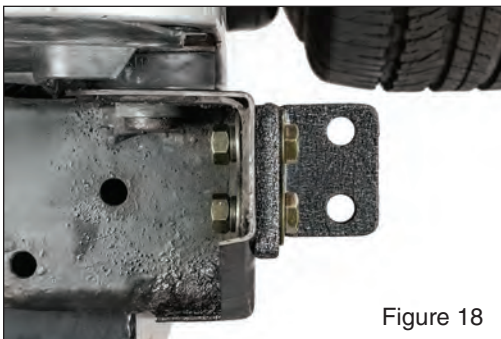
Installation Step Two (continued):



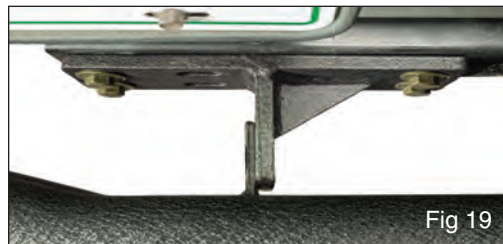
Attaching Mounting Brackets
With the four 1/2" Holes drilled, the brackets/Hitch should be centered on the holes with the vertical mounting tab



facing outwards and the supports holding the vertical mounting tab facing inwards (Fig 16).



Attaching Mounting Brackets
Attach each bracket to the rear frame using (4) 10mm bolts, (8) 10mm Flat Washers, (4) 10mm Lock Washers (Fig 17) and (4) 10mm nuts per side. Proper bolt, washer and nut position called out in (Fig 18). Do not tighten at this time. With the mounting brackets loosely installed and centered on the vehicle, line up the two tabs on each side of the Tube Bumper to the mounting holes on the mounting brackets (Fig 19). Line up both brackets so the width of the bumper brackets lines up with the outside of the mounting brackets (Fig 20). Tighten the bumper mounting brackets

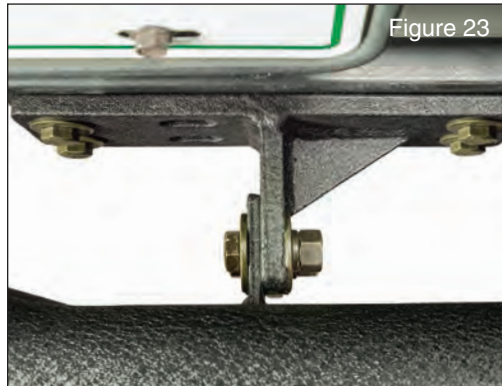


to the vehicle to 45 ft/lbs using a torque wrench. Attach the receiver hitch to the rear frame using (4) 10mm bolts, (8) 10mm Flat Washers, (4) 10mm Lock Washers (Fig 21) and (4) 10mm nuts per side. Proper bolt, washer and nut position called out in (Fig 18). Tighten these bolts/nuts to 45 ft/lbs using a Torque Wrench. Proceed to Step 3.



The Trusted Source

Installation Step Three:



Mounting The Bumper to Brackets or Receiver Hitch

Now that your Mounting Brackets/Receiver Hitch have been installed and torqued to 45 Lbs., you now can attach the rear tube bumper to the mounting brackets/Hitch. Line up the rear tube bumper mounting tabs with the top and bottom holes in the mounting plates/Receiver Hitch and attach the bumper using (4) 12mm bolts, (8) 12mm Flat washers, (4) 12mm Lock Washers and (4) 12mm nuts (Fig 22, 23 & 24).



Tighten the bumper mounting brackets to the Rear Tube Bumper to 45 ft/lbs using a torque wrench.

NOTICE

Torque Specifications: All New Installed Bolts = 45 ft-Lbs



The Trusted Source

Bumper Care and Maintenance:

Your Bumper has been designed and manufactured to provide years of use. However, like any product, general maintenance is required to keep it looking new.

Because the bumper is located on the rear of the vehicle, it is subject to potential rock chips and other debris potentially causing portions of the paint to chip off. We recommend using a textured or gloss black spray paint sprayed on a piece of cardboard and Q-Tip to gently fill in these chips. This will prevent any rust from forming.

On all bumpers there is a chance of some surface rust showing over time due to metal particles being embedded

in the paint. This surface rust is easily removed by a non-abrasive cleaner/polish and a soft brush (not a metal brush!)

To further protect your bumper we recommend using a non-abrasive car wax on the part on a regular basis. This will protect the finish and keep your bumper looking like new. For gloss black and stainless finishes, micro scratches can occur from daily use of the bumper. To remove these scratches we recommend a mild aluminum polish. However, before using any polish, try a test area on the back side of the bumper before using it on the front, exposed surface to test abrasive level of the polish. If it causes more scratches, STOP and use a milder polish.



The Trusted Source

QuadraTop™ Replacement Soft Tops

Affordable quality and durability with no compromises! Our top kits are designed to work with factory hardware and feature finer quality materials and workmanship along with the latest in manufacturing technologies for unprecedented value. Our new product team with decades of soft top knowledge and experience delivers you all the great features you want in a replacement top with unsurpassed customer service and support. Our QuadraTop is the best value in replacement soft tops compared to other tops costing hundreds more. If for any reason, you are not completely satisfied with your soft top purchase or have an installation question, please contact our professional customer support staff for a solution. All QuadraTops feature a limited Three year warranty against defects. The incredible fit & detailed instructions make installation as easy as... One, Two, Three!

Applications for YJ and TJ Wrangler Vehicles:

For '88-'95 Wrangler w/Upper Doors & Clear Windows *11000.00XX

For '88-'95 Wrangler w/Upper Doors & Tinted Windows *11000.01XX

▶ Colors: 09 · 15 · 17

For '97-'02 Wrangler w/Clear Windows *11000.02XX

For '97-'02 Wrangler w/Tinted Windows *11000.03XX

For '97-'02 Wrangler w/Upper Doors & Clear Windows *11000.04XX

For '97-'02 Wrangler w/Upper Doors & Tinted Windows *11000.05XX

▶ Colors: 15 · 17 · 33

For '03-'06 Wrangler w/Clear Windows *11000.0635

For '03-'06 Wrangler w/Tinted Windows *11000.0735

For '03-'06 Wrangler w/Upper Doors & Clear Windows *11000.0645

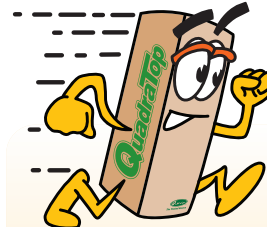
For '03-'06 Wrangler w/Upper Doors & Tinted Windows *11000.0745

▶ Colors: 35



**QUADRATOPS
START AT
\$299.99!**

to the RESCUE!



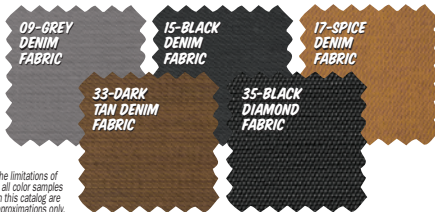
SAME DAY SHIPPING!*

**Factory Trained Soft Top
Advisors Always on Call!**

Go online or call for latest price...



**AFFORDABLE
QUALITY
WITH NO COMPROMISES!**



Due to the limitations of printing, all color samples shown in this catalog are close approximations only.



*Order an In Stock New QuadraTop Soft Top for Delivery in the Lower 48 States Before 4pm Eastern Standard Time, and It'll Ship UPS Ground the Same Day. Ground Shipments take between 1-7 Business Days to Deliver. Need Your Top Faster? Expedited Shipping Options are Available with a UPS Air Freight Surcharge.



The Trusted Source

Quadrtec® Exclusive Three Year Limited Warranty

Your Quadrtec® branded accessories are covered by the following **Limited Warranty** provided exclusively by Quadrtec, Inc., 1028 Saunders Lane, West Chester PA 19380.

This **Limited Warranty** is the only warranty made in connection with your purchase. Quadrtec neither assumes nor authorizes any vendor, retailer or other person or entity to assume for it any other obligation or liability in connection with this product or **Limited Warranty**. This **Limited Warranty** does not apply and is not cumulative to any accessory or part distributed by Quadrtec for which the Manufacturer provides a separate written warranty.

What is Covered: Subject to the terms, exclusions and limitations herein and with respect only to Quadrtec branded accessories first sold in the United States, Quadrtec warrants to the initial retail purchaser only that your Quadrtec accessory shall be free of defects in material and workmanship: **for a period of three (3) years from date of retail purchase.**

This **Limited Warranty** is not assignable and shall terminate upon sale of the vehicle upon which the Quadrtec accessory is installed or other transfer third persons.

All other warranties are hereby disclaimed, except to the extent prohibited by applicable law in which case any implied warranty of merchantability or fitness for a particular purpose on this product is limited to 3 year from date of initial retail sale. Quadrtec reserves the rights to: (a.) require invoice or other proof your accessory is within the terms of this **Limited Warranty** as a condition of warranty service and, (b.) make future revisions to this product and **Limited Warranty** without prior notice or obligation to upgrade your product.

What is Not Covered:
Your Quadrtec **Limited Warranty** does not cover products or parts Quadrtec determines to have been damaged by or subjected to:

(a.) installation damage, alteration, modification, combination with other parts, failure to maintain or improper repair or service, (b.) normal wear & tear, cosmetic damage or damage from moisture or water immersion, (c.) Acts of God, accidents, misuse, negligence, inadequate mounting or impact with vehicle(s), obstacles or other aspects of the environment, (d.) theft, vandalism or other intentional damage.

Remedy Limited to Repair/Replacement:
The exclusive remedy provided hereunder shall, upon Quadrtec inspection and at Quadrtec's option, be either repair or replacement of product or parts (new or refurbished) covered under this Limited Warranty. Customers requesting warranty consideration should first contact Quadrtec to obtain a RGA number (610-701-3336). All labor, removal, shipping and installation costs are customer's responsibility.

Other Limitations - Exclusion of Damages - Your Rights Under State Law:

In consideration of the purchase price paid, neither Quadrtec nor any independent Quadrtec distributor/licensee are responsible for any time loss, rental costs, or for any incidental, consequential, punitive or other damages you may have or incur in connection with any part or product purchased. Your exclusive remedy hereunder for covered parts is repair/replacement as described above.

This **Limited Warranty** gives you specific rights. You may also have other rights that vary from state to state. For example, some states do not allow limitations of how long an implied warranty lasts and /or do not allow the exclusion or limitation of incidental or consequential damages, so the limitations and exclusions herein may not apply to you.

©Quadrtec, Inc. 2013. All Rights Reserved.
3.25.13 LTR Version

Part #12999.3004



The Trusted Source