

INSTALLATION INSTRUCTIONS

88635

Rev A

RANCHO REAR BUMPER / TIRE CARRIER KIT RS6235B

READ ALL INSTRUCTIONS THOROUGHLY FROM START TO FINISH BEFORE BEGINNING INSTALLATION

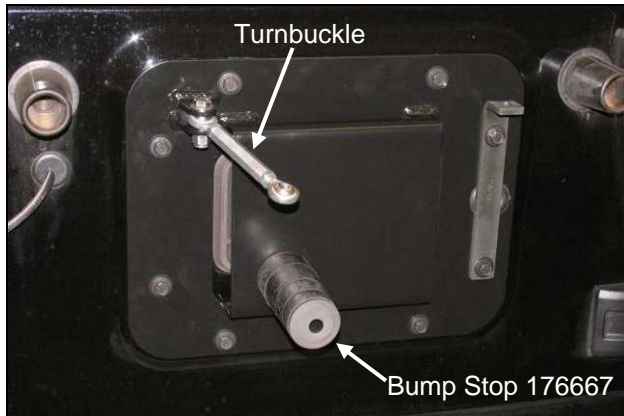


Parts List

<u>Part No.</u>	<u>Description</u>	<u>Qty.</u>	<u>Part No.</u>	<u>Description</u>	<u>Qty.</u>
	Box 1 of 2			1/2"-13 Stover Nut	1
176663B	Rear Bumper	1		1/2" USS washer	2
860662	Hardware Kit	1		1/2"-20 x 1.75 HHCS	3
420069	Crush Sleeve, long	1		1/2" -20 x 3.00 HHCS	3
420070	Crush Sleeve, short	1		1/2" Lock washer	5
	M12-1.75 x 100 HHCS	2		1/2" - 13 x 5.5 HHCS	1
	M12-1.75 Stover Nut	2		Thin Hex nut, 3/8-24 RH	1
	M12 Washer	4		Thin Hex nut, 3/8-24 LH	1
	D Washer	2		HHCS 3//-24 X 1.5	2
88635	Instruction	1		HHCS 3/8-16 X 2.5	2
	Box 2 of 2			3/8-24 Nylock Nut	2
176664B	Tire Carrier	1		3/8-16 Nylock Nut	4
860716	Hardware Kit	1		3/8 SAE Washer	12
420091	Pivot Sleeve	1		Self Drill Screw #14 X 1.5	1
520091	Pivot Bushing	2	860717	Hardware Kit	1
176547	OE Wheel Spacer	1	176667	Bump Stop, Top Support	1
602637	Male Rod End, RH, 3/8-24	1	176668	Bump stop, Mid Support	1
602638	Male Rod End, LH, 3/8-24	1	176669	Bump Stop, Lower Support	1
602639	Female Connecting Rod, 3/8-24 x 3.00	1	176670	Quick Fist Rubber Clamp	2
176674	Bump Stop Spacer, 1/4"	1	176671	Rear Door Cover Plate	1
176676	Bump Stop Spacer, 3/16"	1	176634	CB Antenna Mount	1

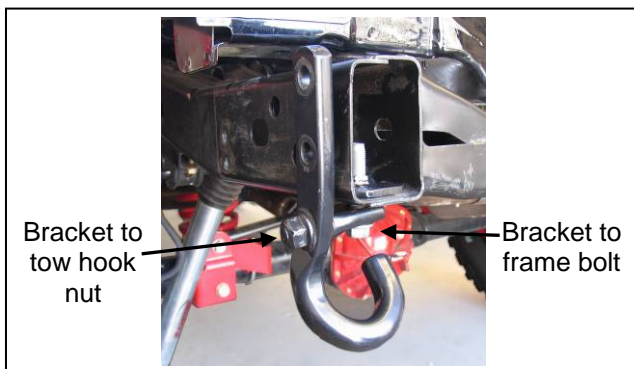
- 1) Remove spare tire.
- 2) Remove OE spare tire mount by removing the 8 spare tie mount to door mounting bolts. Save bolts for reuse.
- 3) Unplug third brake light harness by removing torx (T20) screw on back of spare tire mount and disconnecting harness at light.
- 4) Install bump stop 176667 to rear door cover plate using supplied hardware. See illus 1.
- 5) Attach rear door cover plate and CB antenna mount to door using 8 OE bolts.
- 6) Thread thin 3/8" jam nuts onto rod ends. Thread each rod end an equal amount into turnbuckle. Attach rod end to door vent cover plate using supplied 3/8" hardware. See illus 1.

NOTE: Match left hand and right hand threads to prevent damage to threads on rod ends, jam nuts and turnbuckle.



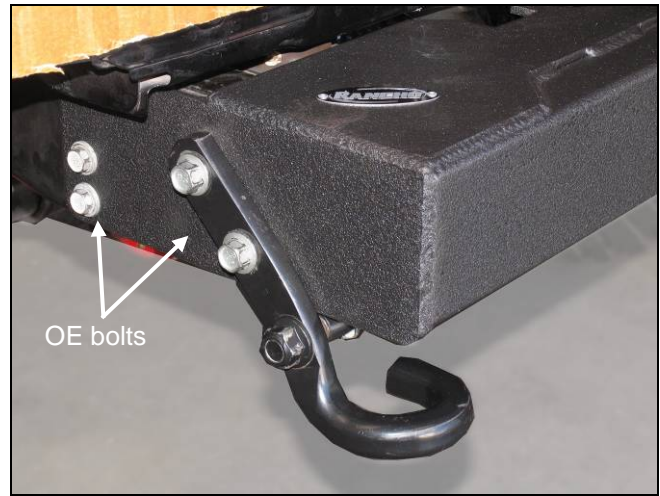
Illus 1

- 7) Support the rear bumper. Remove the bumper bracket bolts at the frame rails. Save bolts for reuse.
- 8) If equipped, remove the tow hook to side frame rail bolts. Loosen the tow hook to bracket nut and bracket to frame bolt. Save hardware for reuse. See illus 2 and 3.



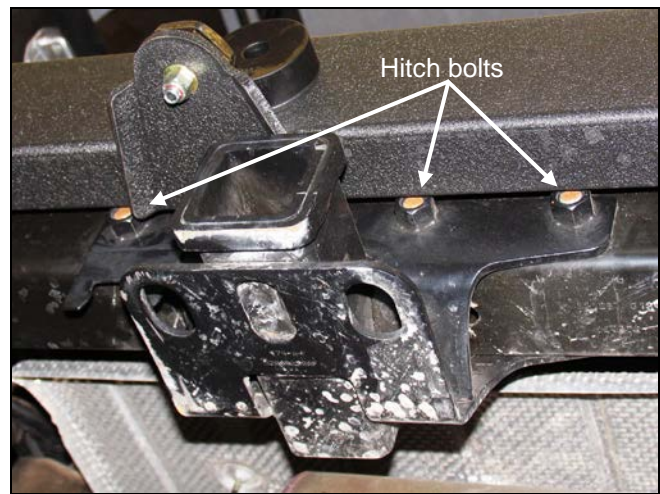
Illus 2

- 9) Remove the crossmember support bolts. Remove the rear bumper assembly.
- 10) Temporarily attach rear bumper 176663B to the frame rails with the original hardware. See illus 3.



Illus 3

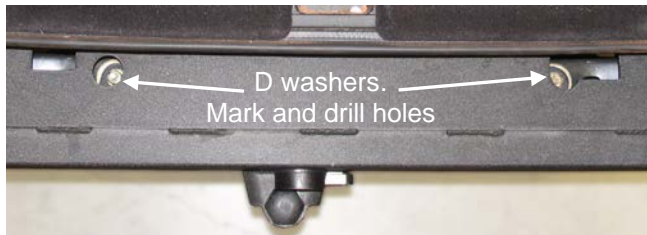
NOTE: Grind hitch receiver bolts if they interfere with bumper. See Illus 4.



Illus 4

- 11) Using rear bumper 176663B as a template, mark the mounting hole locations on the top and bottom of the crossmember. Remove the bumper.
- 12) Enlarge both slotted holes on the passenger side and the top hole on the driver side to 3/4" at the marked locations. See illus 5.
- 13) Drill a 1/2" hole in the bottom of the crossmember on the driver side.
- 14) Insert the shorter crush sleeve (420069) into the driver side hole. Insert the longer crush sleeve (420070) into the passenger side holes.

- 15) While holding the longer crush sleeve, reinstall bumper 176663B. In some cases, it may be easier to slide bumper onto crossmember first, tilt back and then insert crush sleeves.
- 16) Insert the supplied D washers under the bumper crossmember brackets and on top of the crush sleeves. See illus 5.



Illus 5

NOTE: Crush sleeve and D washer installation is not required if your vehicle has an installed RS6509B suspension system.

- 17) Attach bumper to crossmember with two M12-1.75 x 100mm bolts, two M12-1.75 stover nuts and 4 washers from kit 860662. Attach bumper to the frame rails with the original bolts. Tighten all nuts and bolts to 55 ft. lbs.
- 18) Press bushings into tire carrier 176664B with a small amount of lithium grease. Apply lithium grease to the pivot sleeve 420091 and inside of the bushings. Press sleeve into bushings. If there is not a press available, a bench vise or large C-clamp can be used to press the bushings and sleeve in. See Illus 6.

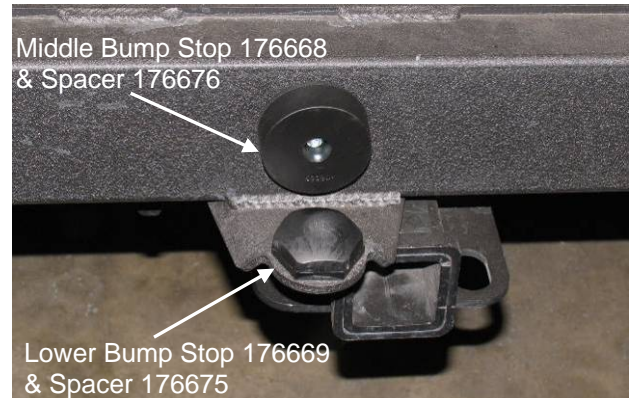
CAUTION: Do not use metal hammer to install sleeve!.



Illus 6

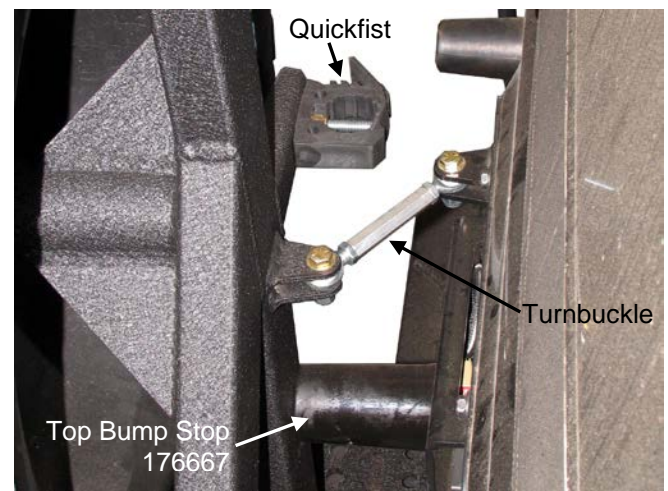
- 19) Attach the tire carrier assembly to mount of bumper 176663B with the supplied 1/2"-13 x 5.5 bolt, two 1/2" USS washers and one 1/2"-13 stover nut. Tighten nut and bolt to 65 ft. lbs.

- 20) Attach lower bump stop support 176669 to bumper bracket using supplied hardware and spacer 176674. See illus 7.
- 21) Attach middle bump stop support 176668 to bumper tube using supplied self drilling screw and spacer 176676. Bump stop should be in middle of bumper cross tube and about 1/2" - .1" to the right of the lower bump stop. Check that middle bump stop hits the center of the tire carrier assembly's vertical tube before attaching. See illus 7.



Illus 7

- 22) Close rear door and tire carrier assembly. Attach free rod end to tire carrier assembly using supplied 3/8" hardware.
- 23) Tighten turnbuckle until tire carrier assembly contacts top and middle support bump stops. Hold turnbuckle and tighten jam nuts. Door should close with a slight resistance from the bump stops. Adjust turnbuckle as needed. See illus 8
- 24) To install Hi-Lift Jack, drill out hole in quick fist with a 7/16" bit. Loosely attach quick fist rubber clamps to tire carrier assembly brackets using supplied 3/8" hardware. See illus 8.



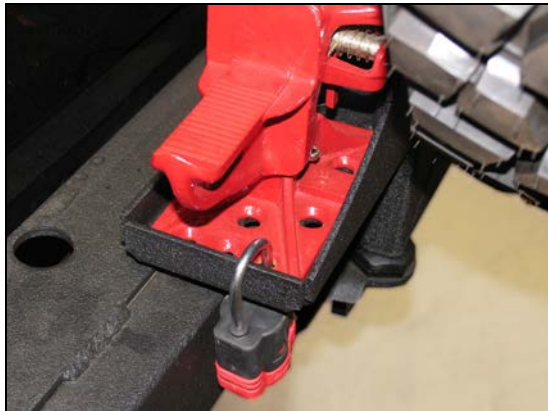
Illus 8

- 25) Set jack in tray and slide Quick fist mounting bolts through holes in jack. Tighten Quick Fist mounting hardware. See illus 9.



Illus 9

- 26) A padlock may be used to lock jack to tray. Some jacks may need hole enlarged to accommodate padlock. See illus 10.

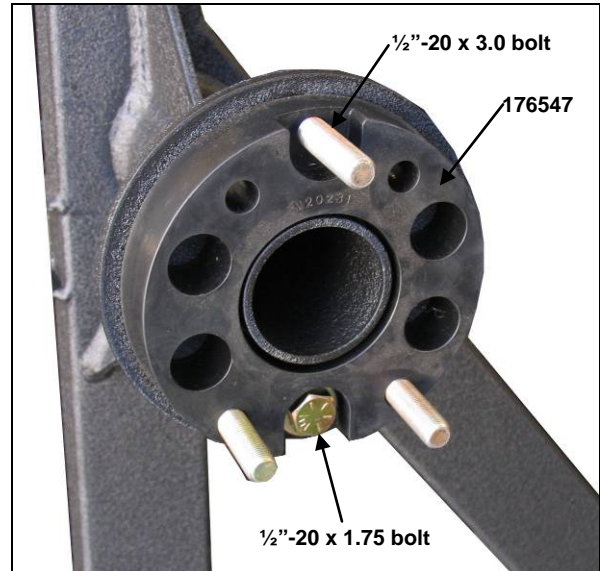


Illus 10

- 27) This kit contains hardware to fit OE wheels and aftermarket wheels. OE lug nuts can be used to secure

wheel to tire carrier.

- 28) For OE wheel mount: Insert three 1/2"-20 x 3.0 bolts in mount plate with provided wheel spacer 176547. Secure wheel spacer to tire carrier with one 1/2"-20 x 1.75 bolt as shown in illus 11.



Illus 11

- 29) For aftermarket wheel with 4.5" backspacing, install three 1/2"-20 x 1.75 bolts in mount plate. Secure wheel to tire carrier with OE lug nuts

NOTE: Tire should fit securely against the frame of the tire carrier to reduce vibrations and movement. Some unique combinations of wheel and tires may need to modify spacer to fit securely against tire carrier frame.

CAUTION: Do not install a spare tire and wheel weighing more than 100 lbs. Do not use wheel spacer on drive wheel, use as a spare tire spacer only.

Check clearances by slowly opening the tire carrier and making sure that the jack or tire does not contact the body of the vehicle.

