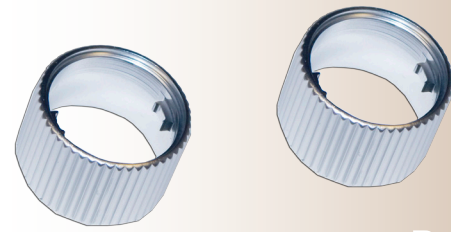


TOOLS YOU'LL NEED FOR INSTALLATION

- Small Pick or Screw Driver



**Billet JK
Radio Knobs**

INSTALLATION

For Billet radio Knobs

1. Pull knob off from radio face.
2. Using a pick are something similar compress 1 small tab on inside of knob while applying slight pressure to center. Might need to compress opposite tab also until center section pops free of black plastic housing.
3. Chrome trim ring is not reused, only black center piece with white plastic surround.
4. Push plastic center into billet drake radio knob making sure clips lock into place on two machined tabs.
5. Push knobs back onto radio face.

Enjoy your new Billet Radio Knobs from Drake Off Road!

