



DRAKE OFF ROAD DASHBOARD CONSOLE TRAY INSTALLATION INSTRUCTIONS

FITS: 2007-10 JEEP JK PART NO: JP-180030-B

Thank you for purchasing a quality Drake Off Road product. Please refer to the installation instructions below when installing this product.

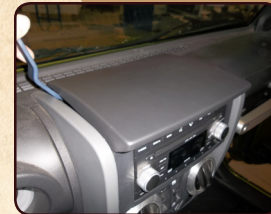
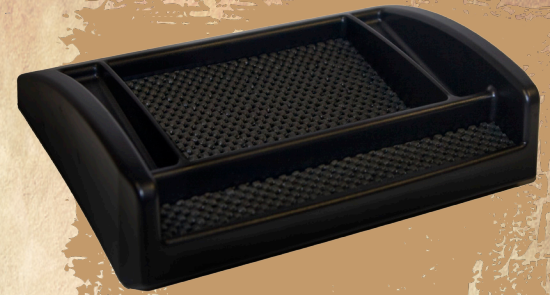
TOOLS REQUIRED:

Tools needed:

- Interior trim removal tool
- Phillips head screw driver
- Pick or flat blade screwdriver

INSTALLATION:

- Step 1:** Using trim removal tool pry edge closest to the windshield upwards to pop the two retaining clips loose that are under the factory plastic piece.
- Step 2:** Lift windshield rear edge upwards till plastic panel is at about a 45 degree angle and pull the whole piece gently towards the rear of the jeep about 1 inch to clear additional retaining tab.
- Step 3:** Slowly lift panel upwards and look underneath. If your vehicle is equipped with digital compass the sensor is secured to the bottom side of this panel. Push the release clip on the wiring harness and unplug it.
- Step 4:** Remove plastic panel from vehicle.
- Step 5:** Using a screwdriver, remove two screws securing compass module to bottom side of panel.
- Step 6:** Using a pick, flat blade screwdriver, or something similar pry off 2 metal retaining clips from plastic prongs on bottom side of panel. Take care not to distort or bend the tabs as they need to be reused.
- Step 7:** Install compass module on bottom side of Drake Offroad panel using 2 small screws supplied. (Use force pushing screw into hole while threading in to get threads started.)



Step 1



Step 2



Step 3



Step 4



Step 5



Step 6

continued on back



DRAKE OFF ROAD DASHBOARD CONSOLE TRAY INSTALLATION INSTRUCTIONS

FITS: 2007-10 JEEP JK PART NO: JP-180030-B

CONTINUED

Step 8: Push metal retaining clips onto the tabs at bottom of Drake Off Road Tray. May need to use trim tool or something similar to help push them on to the tabs depending on difficulty level.

Step 9: Position the Drake Off Road Tray over top of dash and plug harness back into compass module if equipped.

Step 10: Tilt the Drake Off Road Tray to similar 45 degree angle that was used during the removal and slide forward onto front retaining clip.

Step 11: On the front side towards windshield gently press downward making sure clips line up and push down engaging the clips in place.

Step 12: Lay non slip material into 2 matching pockets and enjoy.



Step 7



Step 8



Step 9



Step 10



Step 11



Step 12

SATISFACTION GUARANTEE:

If you are not happy with this product, for any reason, or found product to be defective in manufacturing, simply return it to Drake Off Road within 30 days of purchase and we will replace it - no questions asked. We stand behind our products one hundred percent, so you can sit behind the wheel with pride.

**Proof of purchase and dated receipt must be present with any return. All returned products are tested and if found to be damaged by the installer, no replacement will be issued. You pay the the cost to ship to us, we pay for the return shipping. Guarantee does not include any labor and/or tax charges incurred.*

Questions about Drake Off Road products, visit www.DrakeOffRoad.com or call our customer service department toll free:

**855.DRAKEOR
702.853.2060**



Mon - Thurs 7:45 a.m. to 5:00 p.m. PST
Friday 7:45 a.m. to 4:30 p.m. PST