



SYNERGY MFG. 870 INDUSTRIAL WAY, SAN LUIS OBISPO, CA (805) 242-0397

PPM-8112-07 – TJ/LJ, XJ, ZJ LCA SKID PLATE KIT

GENERAL NOTES:

- These instructions are also available on our website; www.synergymfg.com. Check the website before you begin for any updated instructions and additional photos for your reference.
- The Lower Control Arm(LCA) skid plates in this kit help to prevent the factory TJ/LJ, XJ, ZJ LCA brackets from bending.
- These skid plates can be installed with the axle still in the vehicle and control arms still attached.
- While not necessary, we do suggest removing the lower control arms to prevent any heat damage to the bushings/ joints.
- Be sure to disconnect the ground cable from the battery prior to welding as to prevent electrical damage to the vehicle.

PARTS LIST:

- (2) 811207 TJ/LJ, XJ, ZJ LCA SKID PLATES (1L & 1R)

Parts / Tools Needed to complete installation:

- Basic simple hand tools.
- 4-1/2" angle grinder with abrasive attachments to remove paint and metal from axle and brackets.
- Some form of welder. Mig is preferred, but Tig or stick welding is acceptable.
- Spray paint of desired color

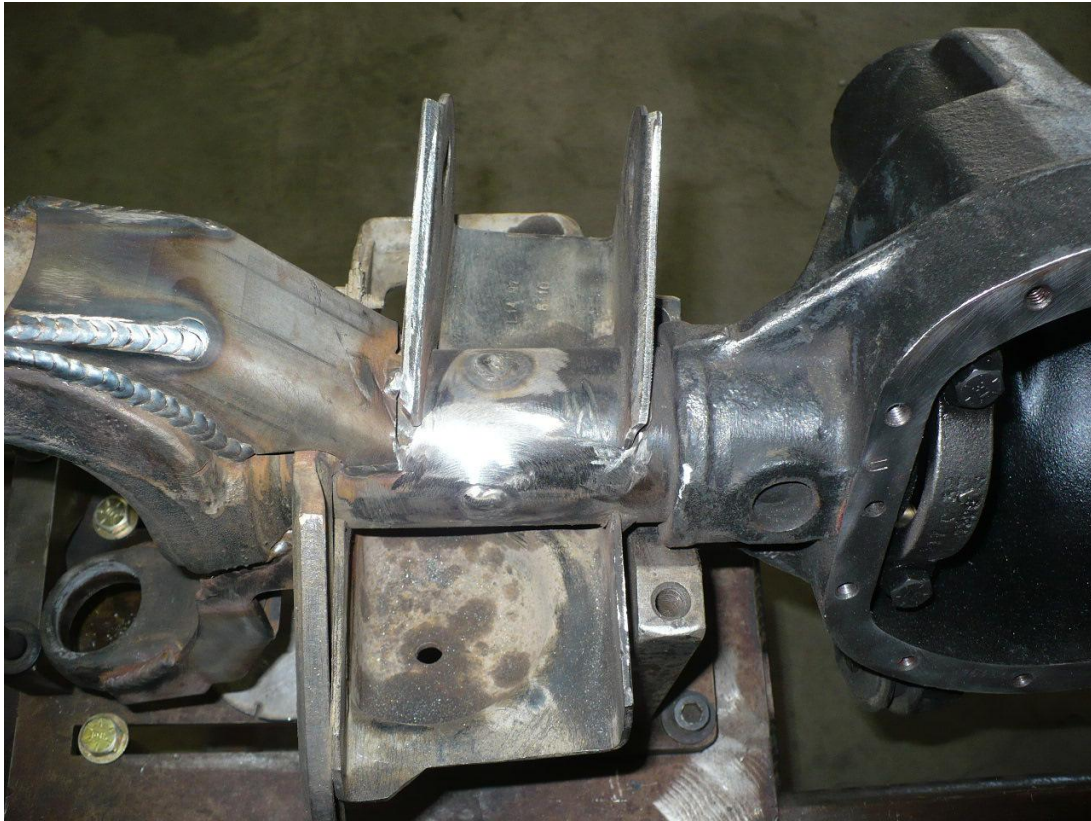
APPROXIMATE INSTALL TIME: 1-2 HOURS

INSTALLATION:

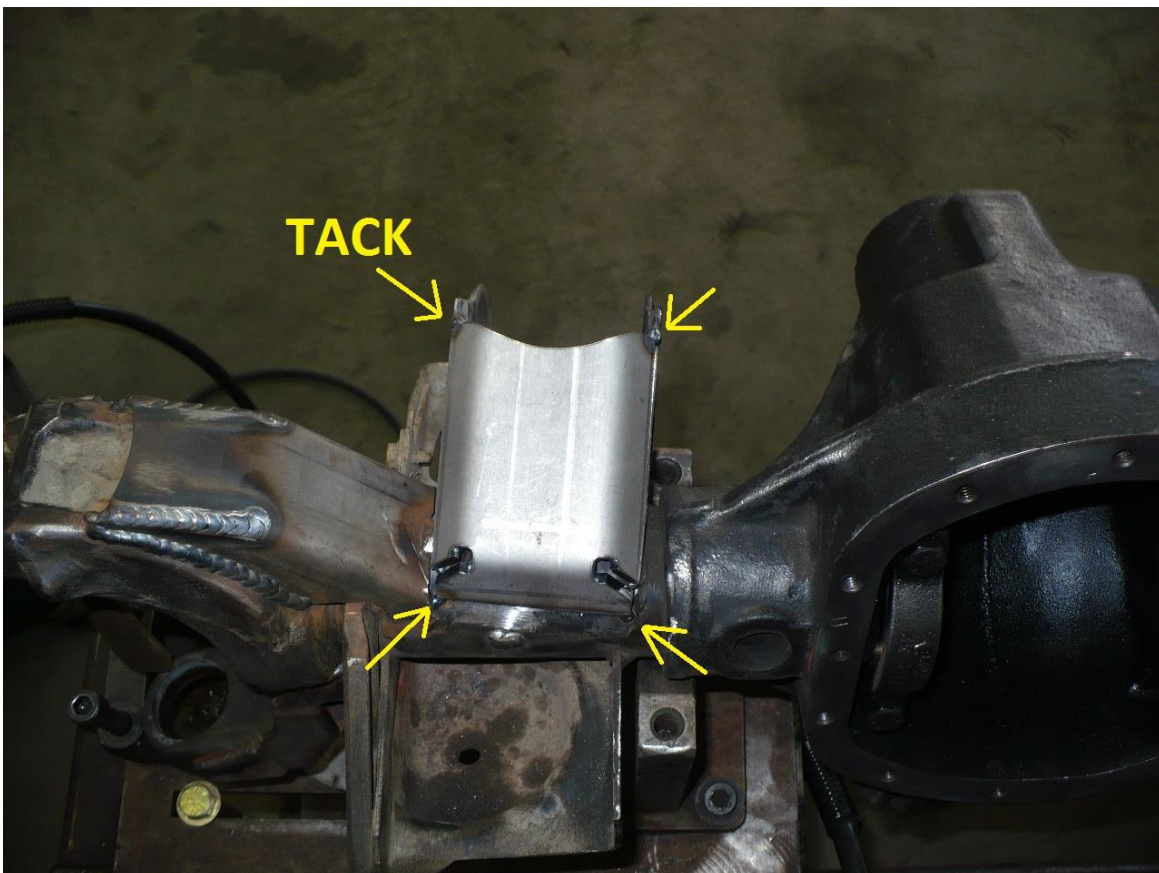
- 1) Install one side at a time.
- 2) It is recommended to remove the lower control arms from the axle. Excessive heat from welding can damage the bushings in the control arms. Use discretion when welding.
- 3) Fit the LCA skids on the axle to see what areas need to be cleaned up in preparation for welding.
 - Note, the skids are left and right specific, so be sure to fit them properly for a clean weld seam.



- 4) Clean the areas to be welded as shown.



- 5) Once weld surfaces are prepared, place the LCA skids in position. Tack in several locations and fully weld all areas as shown below.





6) After welding, clean off any weld burrs and paint to the desired color to prevent corrosion.

Installation is Complete