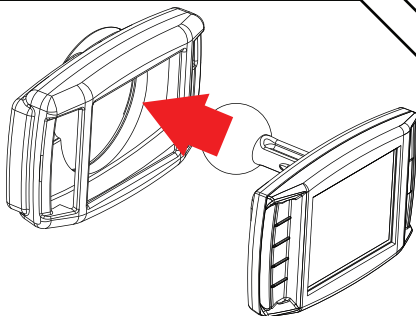
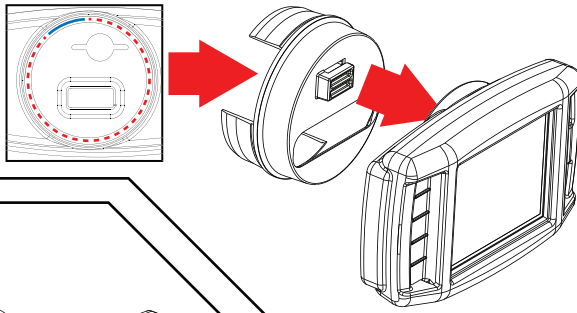
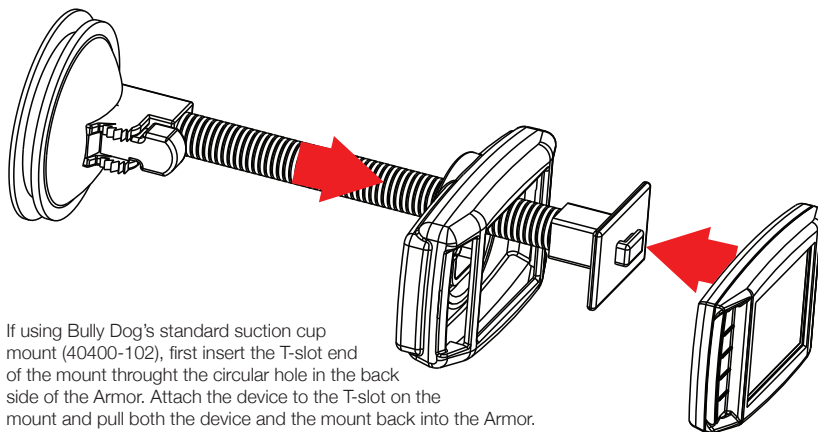


Depending on how you plan to mount your device, the Armor can be installed in several ways.

If using Bully Dog's 2 1/16 Pod Mount Adapter (30420), make a small **incision** and **tear away** the circular piece on the Armor's back side, insert the device into the Armor and insert the T-slot into the device.



If using Bully Dog's available Ram Mount T-Slot Adapter (30600-3), slide the adapter into position on the device, and then insert the ball end of the adapter through the circular hole in the back side of the Armor.



If using Bully Dog's standard suction cup mount (40400-102), first insert the T-slot end of the mount through the circular hole in the back side of the Armor. Attach the device to the T-slot on the mount and pull both the device and the mount back into the Armor.