

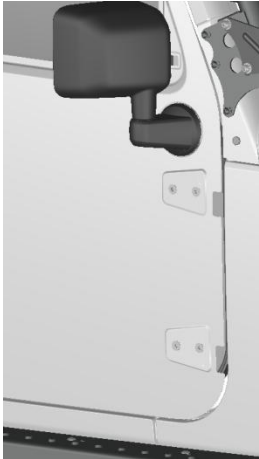
# KARGO MASTER®

## SAFARI

### 60260 Installation Instructions

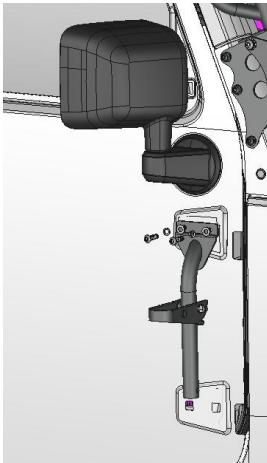
#### Step 1

- Insert rubber bumpers (9309K16) into both sides of each 60260-12 assembly.



#### Step 2

- Be sure door is shut and latched.
- Remove top two TORX bolts using a T50 drive.
- Leave bottom hinge bolts attached and tight. (This is so you do not have to re-align door)



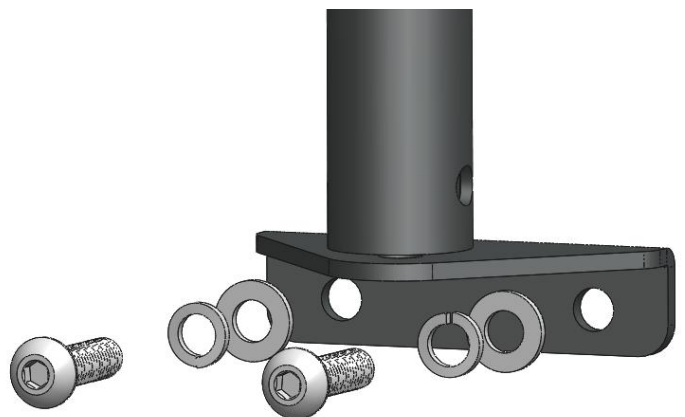
#### Step 3

- Install step assembly (60260-12) in position of previously removed bolts.
- Bolt to door using two M8 x 30mm button head bolts, two M8 split lock washers and two M8 flat washers.
- Tighten Bolts



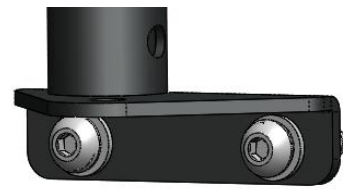
#### Step 4

- Remove bottom two TORX bolts from door hinge using a T50 drive.
- Bolt bottom support (60260-00-002) to door hinge in the same location of previously removed bolts. Use two M8 x 30mm button head bolts, two M8 split lock washers and two M8 flat washers.
- Do not tighten.



### Step 5

- Bolt bottom support (60260-00-002) to step assembly (60260-12) using one M8 x 30mm button head bolt, one M8 split lock washer and one M8 flat washer.
- Snug Tighten



### Step 6

- Tighten bolts from step 4 into door hinge.
- Tighten bolt from step 5.
- Repeat on driver side.

Your installation is now complete.

