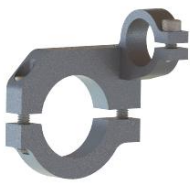




## Aluminum Load Bar (60335) Installation Instructions

### Step 1

- Insert end caps into each end of aluminum tube.



### Step 2

- Mount two crossover brackets concentric to one another anywhere on the tube using the 5/16 hardware.

\*\* You may mount the load bar to other mounting hardware if you choose\*\*

### Step 3

- Slide the aluminum load bar through both crossover brackets.
- Center the bar as you would like and tighten cross over bracket.



### Step 4

- Use your load bar in a variety of different ways to mount or secure cargo.
- The installation is now complete.