



INSTALLATION INSTRUCTIONS

TJ Glovebox Part # 049

Please read and fill out the enclosed warranty registration card to activate your warranty.

Tools Needed

- #1 Phillips head screwdriver
- 7/16" Socket
- 1/8" allen wrench
- Ratchet for 1/4" socket
- 3/8" wrench
- Drill and 1/4" drill bit(optional)

For office use only

- Shipping package
- Warranty Card
- Assembly Instructions
- Keys
- Rubber Seal
- Finger Pull
- 049 Glovebox

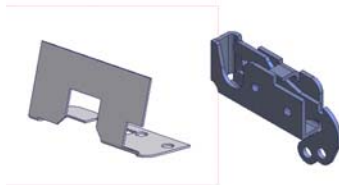
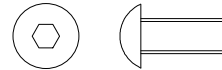
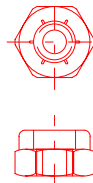
Checked by _____

Shipping Package

(4) #10 Flat Washers

(4)10-32 Locknuts

(4)10-32 x 1/2" Button Head Cap Screws



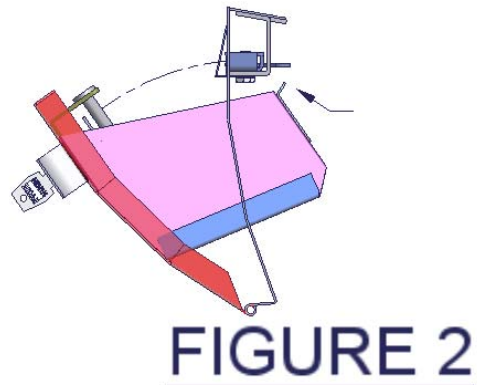
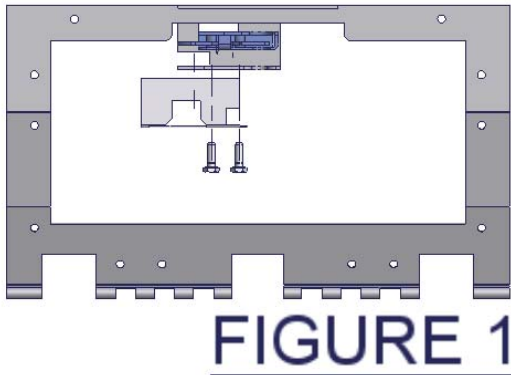
Latch Cover and Latch

(2)1/4" Grade 8 Bolts

Mounting Directions

1. Remove the factory glovebox from your TJ by gently pulling forward on the plastic tab on the right side until the tab clears the dash and the box rotates out all the way or by releasing holding strap. Gently pull on the glovebox until the plastic hinges release.
2. Remove the factory lock catch at the top of the opening by unscrewing the two phillips head screws, save screws.
3. Remove the eight phillips head screws that attach the steel framework to the dash, save screws.
4. Cut and stick the neoprene strip across the top and down the sides of the Tuffy glovebox frame (Where the closed door will meet up with the frame)
5. Put your Tuffy glovebox into the dash. Notice that the holes in the frame of the Tuffy box line up with the holes for mounting the original glovebox.

6. Bolt your Tuffy glovebox in place using the 10 screws you removed, be sure to bolt the lock catch to the holes at the top. It is easiest to loosely start all the screws before tightening any of them all the way down.
7. After installing the two screws through the top of the glovebox into the dash, it is necessary to install the latching mechanism and the latch cover. Use the supplied $\frac{1}{4}$ -20 x $\frac{3}{4}$ " bolts and refer to FIGURE 1.
8. There are two extra holes at the bottom of the frame and two extra holes on the lock catch that can be used as pilots to drill holes in your dash. (Drilling of the extra holes is recommended for full security.)
9. **WARNING!** Be careful while drilling and avoid drilling into air ducts.
10. Close your glovebox partially and adjust the height of the drawer stopper so that it will hit the lock catch and does not allow the box to fall all the way open, See FIGURE 2.
11. Be sure the latch is released, if not press the actuator on the left side of the latch.
12. Check lock operation, Lock it Up!



ATTENTION:

FREQUENT LUBRICATION IS NECESSARY ON THE LOCKING SYSTEM

The pushbutton lock contains an "O" ring seal to protect the interior from dust and water. If this mechanism is not lubricated regularly it will become difficult to operate and it may not return to its home position preventing the key from operating the lock. If this happens simply pull up on the pushbutton to manually bring it back to its home position. Lubricate the pushbutton with a light lubricant such as silicone spray. The pushbutton may have to be periodically disassembled and cleaned.