



EVO-1112B/ EVO-1112AL JK Quarter Pounder Front Bumper



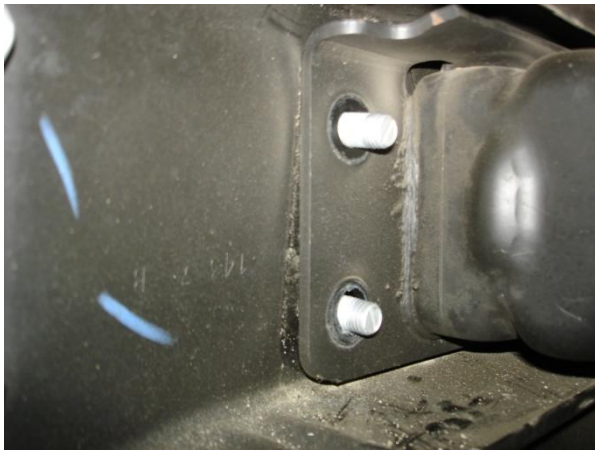
EVO Aluminum Front bumper
Shown here with optional D'Rings & Fairlead

	QTY	Part#	Description
EVO-1112			
□	1	EVO-10038B	EVO 1/4 POUNDER JK Front Stubby Bumper Black
□	4	EVO-10037B	EVO 1/4 Pounder Front Bumper Plate JK Black
□	1	EVO-770014	1/4 Pounder Hardware Pack
□	1	EVO-12033B	Jog Plate (Not Pictured)
□	1	EVO-770045	Jog Plate Hardware Pack (Not Pictured)

EVO-1112AL

□	4	EVO-10037AL	Spacer Plate, JK Front Bumper (ALUM)
□	1	EVO-10038AL	¼ Pounder, JK Front Stubby Bumper (ALUM)
□	1	EVO-10039AL	Front Bumper Jog Plate (ALUM)
□	1	EVO-770014	¼ Pounder Hardware Pack
□	1	EVO-770044	Front Bumper Jog Plate Hardware Pack

Note: This kit requires cutting to gain added ground clearance and approach angles. Rubicon models see supplement instructions

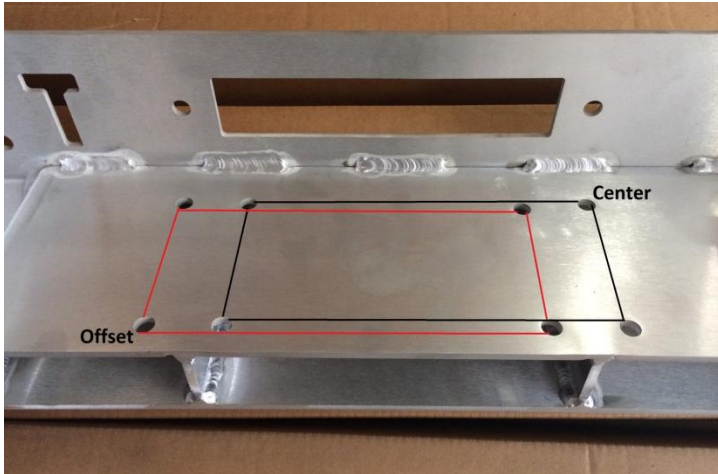


1. Remove factory front bumper by removing the 8 nuts on the inside of the bumper.
2. Remove upper factory plastic in front of grill.



3. Using a Sawzall, cut off wheel or similar, Remove/cut the lower front cross member as shown with the yellow lines, front and back both sides.





4. If a winch is to be installed. Follow the directions that came with your winch and mount to the inner 4 bolt pattern on the inside of the ¼ Pounder. The EVO MFG Quarter Pounder bumper will accept center mount winches as well as offset winches. For offset winches install the included winch fairlead mounting bracket on the passenger side. For center mount winches install the winch fairlead mounting bracket on the driver side.



5. At this time, install winch fairlead to ¼ Pounder: If applicable.

6. Verify that the supplied ½" bolts will insert through all the 8 factory holes in your JK's frame. If not, drill the holes that do not with a ½" drill.

7. Using the supplied hardware (2.0" without D-Rings, 2.5" with D-rings all with washers) install through the upper right and left holes of both sides (4 Bolts total). If you are using the EVO D-Rings, These should be mounted at this time on the outer face of the bumper.



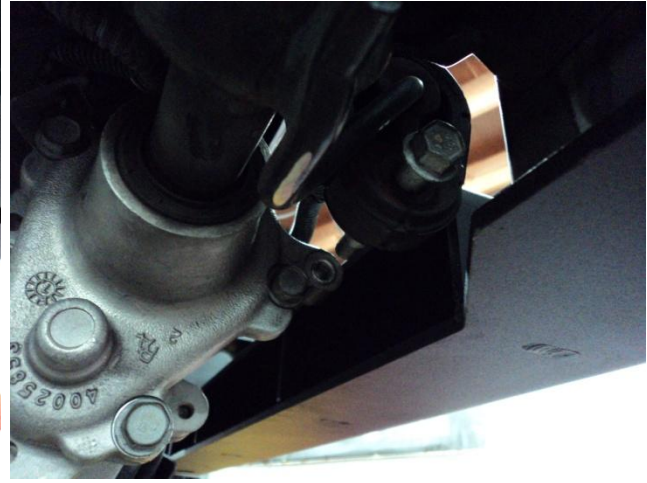
8. On the inside face of the ¼ Pounder, install 2 spacer plates per side on the inside mounting face of the ¼ Pounder on the inserted bolts.

9. Install ¼ Pounder with spacer plates to factory frame.

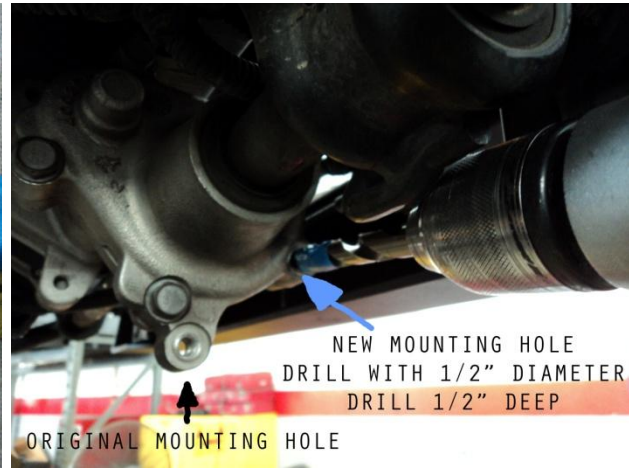
10. Install supplied washers and nuts and 4 remaining lower bolts.

11. Torque all nuts to 80 lb/ft .

Rubicon SwayBar Mount Relocation Instructions:



1. Remove bolt from the front mount of the swaybar motor. (long bolt that goes through the rubber isolator).
2. The motor will now freely rotate on the axis of the swaybar.
3. Rotate the swaybar motor rearward as much as possible.
4. With a 1/2" diameter drill mark off 1/2" from tip down on the drill with tape.



5. In the new mounting hole, drill from the passenger side toward the center of the vehicle 1/2" deep (up to tape mark) into new mounting hole. **DO NOT DRILL MORE THAN 1/2"**. You may need to loosen the two bolts on the passenger side frame rail that holds the swaybar to the frame to get your drill to drill straight into the new mounting hole.
6. Using the same bolt removed earlier install through the factory rubber isolator and into the newly drilled hole.