



EVO-1130

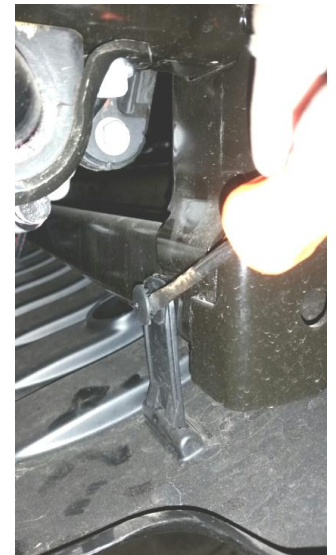
EVO MFG Pro Series JK Front Bumper



PART#	DESCRIPTION	QTY
EVO-12071	EVO Pro Series Bumper w/ Hoop	1
EVO-12072	EVO Pro Series Bumper Winch Plate	1
EVO-12075	EVO Pro Series Bumper Winch Plate, Nut Plate	2
EVO-12076	EVO Pro Series Bumper Winch Mount Spacer	2
EVO-12077	EVO Pro Series Bumper Winch Jog Plate	1
EVO-900216	SAE Washer ½ Thru Hardend Zinc	10
EVO-900223	Stover Lock Nut ½-20 GrC Zinc	8
EVO-770045	EVO Bumper Jog Plate Hardware Pack	1
EVO-900038	HHCS ½-20 x1.00 Gr8 Zinc	2

NOTE : 2012 and up Jeep JK's require a EVO-1096 JK Vacuum Pump Relocation kit. A 17/32" drill bit is recommended to complete installation. ½" can be substituted but gives little clearance with bumper bolt installation.

1. Remove factory air dam; there are two tabs on the backside that are connected to the OE crash bar with plastic grommets. We have found that a flat head screwdriver works best to pry the grommets out. There are also a few plastic grommets near the front lip of the air dam on the front side of the vehicle that will need to be removed.
2. Remove factory bumper top fascia section that sits between the grill and bumper and is held in place by two plastic grommets which are slotted for a screwdriver. Unscrew the two grommets and pop off the top section fascia. If you are having troubles unscrewing the two grommets you can place a flathead screwdriver between the screw of the grommet and the grommet pry the grommet screw loose. Once the screw is removed the grommet will easily lift from the frame.



3. Remove factory bumper with an 18mm socket, there are 8 nuts total that will need to be removed.

4. (2012 and up Jeep JK's) Remove the two bolts that hold the factory vacuum pump.

5. If your vehicle is equip with fog lights disconnect the wiring harness by depressing the tab on the plug and pulling the plug out



of the back of the fog light.

6. On the inside of the factory bumper the wire harness is attached to the bumper and frame with several grommets, remove them so that the bumper may be removed from the vehicle.
7. Carefully remove the factory bumper from the vehicle.

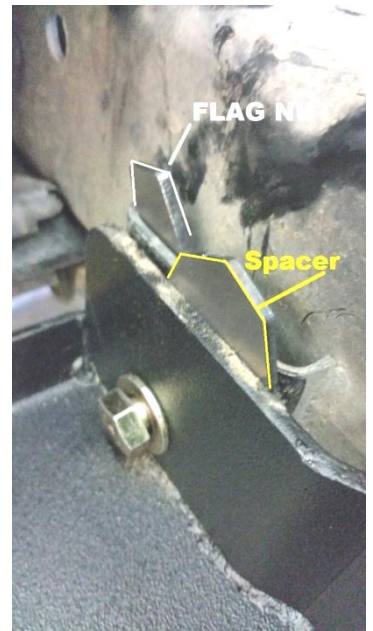
NOTE: 2012+ Jeep JK's install your Aftermarket JK vacuum pump relocation kit at this time.



8. Install EVO Pro Series Winch Plate. Slide the EVO winch plate in between the factory frame rails as shown. Angle the winch plate as you slip it into place and rotate the mount as needed.

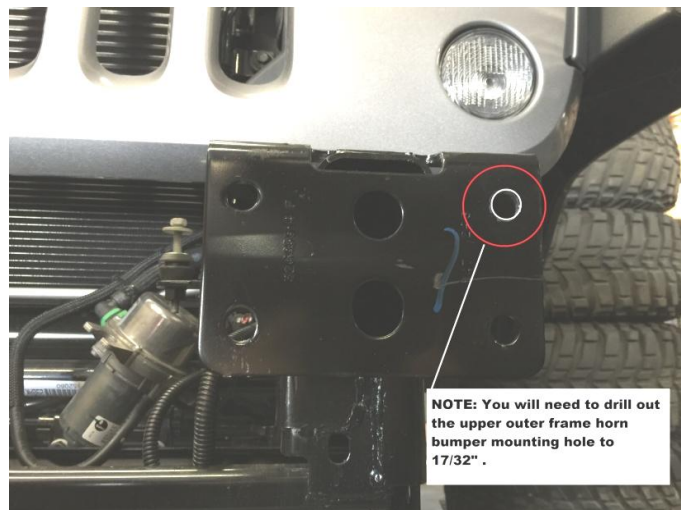


9. Using the included winch mount spacers and winch mount nut plates install the EVO winch mount plate to the factory frame rails. The winch plate spacer should be positioned in-between the EVO winch plate and factory frame rail. **Depending on customer clearance of factory vacuum pump bracket, a spacer may or not be needed on the driver side.**



The EVO winch mount nut plate should be installed in the pocket along the factory frame rail. Do not tighten at this time

10. Using a 17/32" Drill bit drill out the driver side upper outer side frame horn mount hole.



NOTE: You will need to drill out the upper outer frame horn bumper mounting hole to 17/32" .

11. Install EVO Pro Series Front Bumper on to vehicle, 8 capture bolts on bumper go through the frame, then



through the EVO winch plate, then securing it to the factory front frame horns with the included 1/2" washers and 1/2"-20 stover lock nuts. Torque to 85 ft/lbs.

12. Tighten rear winch mount bolts to nut plate 85 ft/lbs.

EVO Jog Plate Notes:

- The EVO MFG Pro Series Front bumper is designed to fit both center mount and offset mount winches. Included is the EVO jog plate and jog plate hardware pack.
- If you are installing an offset winch for example a Warn Powerplant, install the EVO jog plate on the passenger side of bumper.
- If you are installing a center mount winch such as the Warn Zeon, install the EVO jog plate on the driver side of bumper.

Winch Mounting Notes:

* Mount your winch to EVO winch mount by installing the two rear winch bolts loosely through the EVO winch plate into your winch. (Do not tighten them at this time). Follow winch mfg instructions on how to install winch. Keep the below notes in mind when doing so.

* If you have purchased the EVO MFG Pro Series Bumper Skid plate follow the instructions included with your skid plate at this point.

* If you have not purchased the optional EVO MFG Pro Series Skid Plate Install the front two winch mounting bolts through the EVO winch plate and into your winch.

* Tighten all winch mounting bolts to winch manufacturer's instructions.

