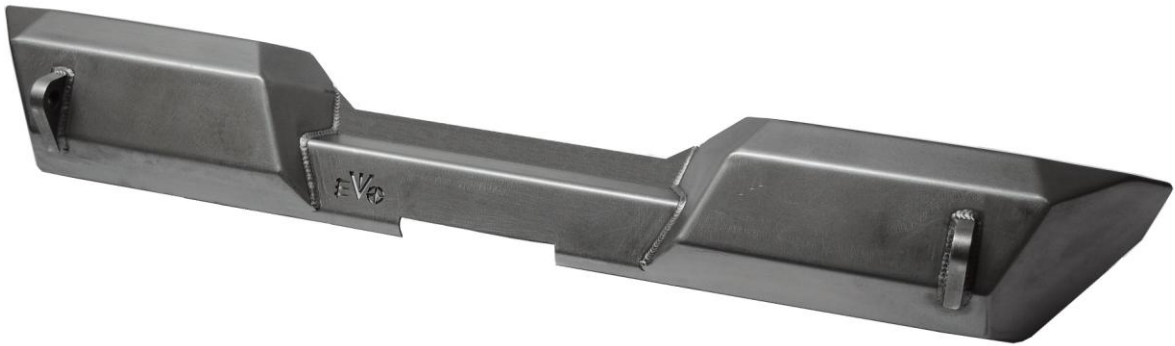




EVO-1132

EVO MFG Pro Series JK Rear Bumper



PART#	DESCRIPTION	QTY
EVO-760011	BOX 72X15X9.5	1
EVO-12070	EVO PRO SERIES REAR BUMPER	1
EVO-11053B	PASS SIDE FRAME PLATE	1
EVO-11054B	DRVR SIDE FRAME PLATE	1
EVO-770052	HARDWARE PACK	1

1. Carefully remove factory rear bumper from vehicle. Removing the two bolts along the side of the rear frame rail as well as the bolts on the rear crossmember. The two smaller bolts from each side will be reused later in the install process. Some rear bumpers will require the removal of the four trailer hitch bolts if so in order to reuse trailer hitch you will need to supply locking nuts for these bolts. Torque to factory specifications.
2. With a helper carefully insert the EVO MFG Pro Series Rear Bumper into the openings of the rear frame rails.
3. Once you have the EVO MFG Pro Series Rear Bumper inserted into the rear frame rails line up the included EVO rear frame rail plates to the corresponding side. The two smaller holes will rest on the side closest to the front of the vehicle. See photos for example

4. Loosely install the two included 9/16" bolts with washers on each side of the vehicle through the EVO rear frame plates and thread



into bumper mounts. **DO NOT TIGHTEN**

5. Using a clamp, clamp the underside bottom of the EVO MFG Pro Series Rear Bumper to the factory rear crossmember. Be sure to verify that the bumper is lined up to your satisfaction.
6. Using a center punch or marker, mark through the circular mounting holes in the bottom of the EVO MFG Pro Series Rear Bumper and on the rear crossmember as centered in the hole as possible.
7. Carefully remove your clamp and the 9/16" hardware holding the EVO MFG Pro Series Rear Bumper to the vehicle. Remove bumper at this time.
8. Using a 7/16" drill the previously marked locations on the rear crossmember.



9. Install supplied nut clips into the rear crossmember through the holes to the outside of the previously drilled mounting holes. If necessary a hammer may be used to assist in inserting the nut clips. Align nut clip threaded hole with previously drilled holes.

10. With a helper carefully insert the EVO MFG Pro Series Rear Bumper into the rear frame rail openings.



11. Once you have the EVO MFG Pro Series Rear Bumper inserted into the rear frame rails line up the included EVO rear frame rail plates and loosely secure them with the included 9/16" bolts and washers.
12. Loosely install the two small factory frame rail bolts through the EVO frame rail plates.
13. Install the included 3/8" Hex Cap screws through the bottom side of the EVO MFG Pro Series Rear Bumper into the previously installed nut clips.
14. At this time torque all bolts.



Optional EVO MFG License plate relocation bracket installation:

1. Remove spare tire from factory spare tire holder.
2. Install the EVO MFG License plate relocation base bracket on to the factory spare tire holder studs as shown in photo.
3. Reinstall spare tire onto the spare tire holder and tighten to factory specs.
4. Install EVO MFG license plate relocation plate bracket on to the EVO MFG License plate base bracket to desired depth using the included hardware.



Optional Items (Sold Separately)

- ORO light plate w/ 6ft harness #LD-PL6 (Third Brake light and License plate with 6ft wiring harness)
 - Mopar License Plate delete #MOPAR-55397112AA(Plastic Delete plug)