



EVO-1119 JK Quick Release Mud Flap Kit



<u>Part#</u>	<u>Description</u>	<u>Qty</u>
EVO-12054B	Mud flap Frame Mount	2
EVO-12055B	Mud flap Tube Mount	2
EVO-12056B	Mud flap Mounting Plate	2
EVO-900341	Zinc-Plated Steel Pin	1
EVO-900345	Square Finishing Plug	2
EVO-600093	Highland Splash Guard 18x12	1
EVO-900353	Carriage Bolt	2
EVO-900352	Wing Nut	2

NOTE: Due to the various rear bumpers being mounted on vehicle, mounting location of the EVO MFG Quick Release Mud flap Bracket may require modification and/or relocation. If a custom location is determined to be needed on your application the EVO quick connect frame mount can be relocated to an alternative location by using 3/8" or similar self tapping screws which you can purchase at your local hardware store or welding bracket to desired location.

NOTE: Pinch seam corner may require slight trimming depending on where mud flap is mounted.

1. ***** OPTIONAL ***** Included with your kit are two Ribbed Neck Carriage Bolts as well as two Wing Nuts. These are included for those customers looking for a more rigid mounting option of the mud flap tube. If you choose this option follow these steps, otherwise if the locking pins are preferred start at step 3.



2. Insert one of the carriage bolts into the bottom side of the EVO Mud flap Frame Mount as shown in the photo. Using a deep socket, around 3/8" or 10 mm works well place it over the threaded end of the carriage bolt. Place them into a vice and begin to press the carriage bolt into the mud flap frame mount. When pressing in vice, align bolt straight with hole. Press/vice bolt into hole making sure bolt stays as straight as possible while inserting. Repeat steps for the other mud flap frame mount.



3. Splash guards have 4 grooves that require the thin rubber to be punctured for hardware to install. Puncture these holes out at this time.



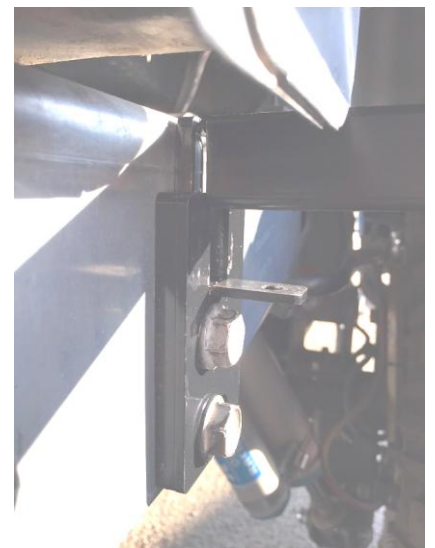
4. Locate and remove the two factory bolts located on the rear of the frame. (see photo)



5. Place the EVO Mud flap Frame Mount bracket on frame and reinstall factory bolts (as shown in photo). Repeat on other side of vehicle. Mounting bracket is slotted front to back, sliding towards the rear of vehicle will require pinch seam corner trimming.



6. Slide the EVO Mud Flap Tube on to your installed EVO mud flap frame bracket.



7. **Splash guards have 4 grooves that require the thin rubber to be punctured for hardware to install. Puncture these holes out at this time.**
8. **Holding one of your mud flaps up to the EVO mud flap tube mark the holes on the EVO mud flap tube that best suit your tire coverage needs.**

Note: The EVO mud flap tube is predrilled for widths of 16", 17", and 18"s. Excess tube length can be cut off if preferred and plugged with the supplied finishing plugs. We recommend visually checking tire coverage prior to cutting the EVO mud flap tube.

9. **Remove EVO mud flap tube from EVO mud flap frame bracket.**
10. **Assemble the EVO Mud flap tube, EVO Mounting Plate, and Splash Guards with the supplied hardware into your previously marked holes. The rubber splash guard should be sandwiched between the EVO mud flap tube and EVO mounting plate. If you have not already done so install the finishing plugs on the mud flap tubes. Keep in mind to assemble them so you'll have a driver and passenger side.**
11. **Install EVO mud flaps on to the EVO mud flap frame mount.**
12. **Insert included locking pins (or install wing nuts if you chose that option).**

