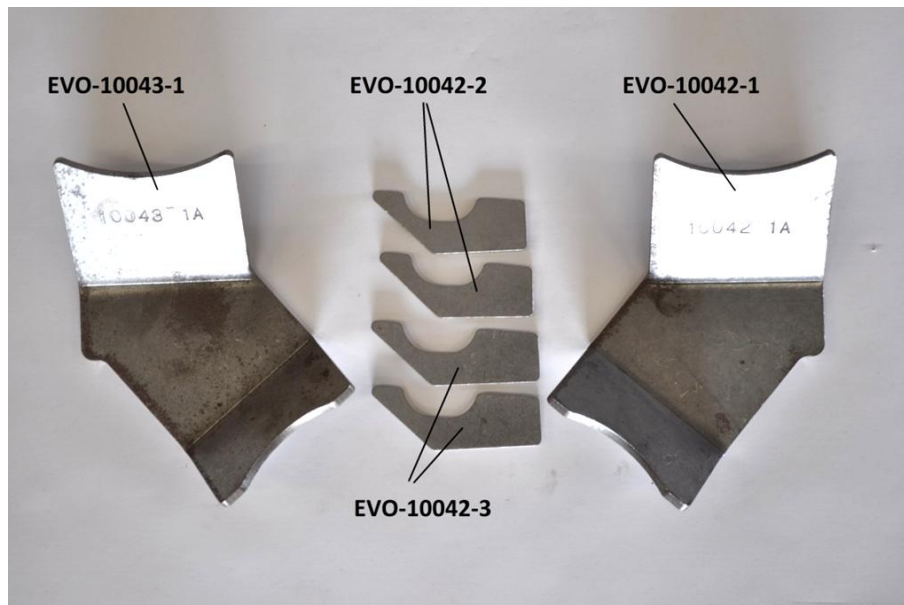


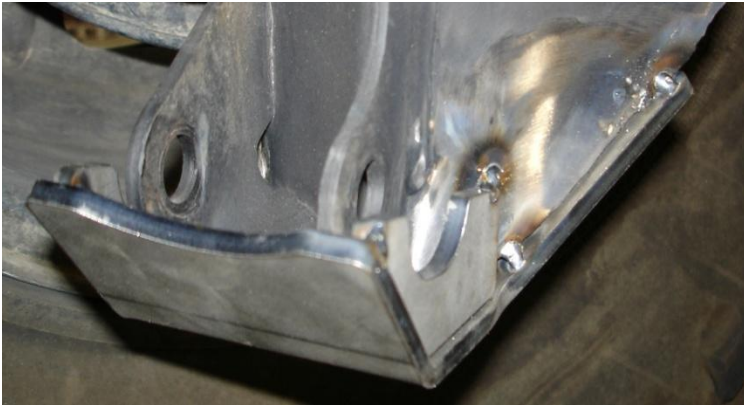


EVO-1039 EVO MFG Rear Control Arm Skids



	QTY	PART#	DESCRIPTION
<input type="checkbox"/>	1	EVO-760002	BOX 7x5x4
<input type="checkbox"/>	1	EVO-10042-1	Rear Lower CA Skid, Driver
<input type="checkbox"/>	1	EVO-10043-1	Rear Lower CA Skid, Pass
<input type="checkbox"/>	2	EVO-10042-2	Inner Gusset Plate, Rear
<input type="checkbox"/>	2	EVO-10042-3	Outer Gusset Plate, Rear

1. Carefully lift rear of vehicle
2. Support axle with jack stands
3. Remove rear tires
4. Remove rear shocks
5. Remove driver side lower control arm
6. Clean all areas to be welded or paint and coatings with sander/wire brush
7. Place 10042-1 against control arm pocket as seen in the photo. Center evenly on control arm pocket. Tack weld in 3-4 locations
8. Place 10042-2 on inner side of shock pocket. Tack into place
9. Place 10042-3 (slightly longer than 10042-2) on outer side of shock pocket. Take into place



10. Verify all areas to be welded are clean of paint
11. Fully weld all areas of contact.
12. Paint all bare metal areas with aerosol paint
13. Repeat steps 6-12 on passenger side
14. Reinstall control arms. They now need to be loaded from the front to rear. They cannot be installed from the bottom any longer. Rolling the bottom of the axle back may be required.

15. Reinstall shocks
16. Reinstall wheels
17. Carefully lower vehicle onto ground
18. Torque wheels, shocks and control arm bolts to factory specifications