



www.hylineoffroad.com

1507 C West Park Avenue ~ Perkasio, PA 18944  
 Tel: 1.888.495.4631 ~ Fax: 215.257.4364

## **Proudly Made In USA**

### Installation Instructions:

JK Single Piece Hood Louver

Part Number(s):

400.500.120 / 400.500.130

400.500.140 / 400.500.150

### Vehicle Fitment:

2007-Present Jeep Wrangler

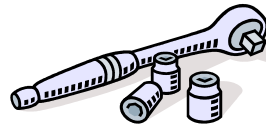
2-Door & 4-Door

### Parts List

**Qty:**

- 1 Single Piece Hood Louver Panel
- 1 Steel Template
- 38 Nylon Locknuts
- 2 10-32 Pan Head Screws

### Tools Needed



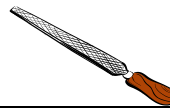
Ratchet & Sockets  
 9mm, 10mm T-50 Torx  
 3/8" Nut Driver



Drill  
 1/16", 3/16" & 1/4" Bits  
 1" Hole Saw



Cut Off Wheel  
 Painters/Masking Tape  
 Permanent Marker



File OR Sandpaper



Safety Glasses



Clear Rust Inhibitor Spray

**Congratulations on your purchase of the Hyline Offroad Hood Louver. All of our products are completely manufactured in our facility located in Perkasio, PA. They are designed and engineered by Offroad enthusiasts just like you to be rock solid at an affordable price. Hyline Offroad would like to thank you for your recent purchase and look forward to serving you in the future.**

*Hyline Offroad Staff*

# PLEASE READ INSTRUCTIONS BEFORE BEGINNING INSTALLATION

## **\*\*\*BEFORE INSTALLING\*\*\***

**If you ordered the Hood Louver Panel raw you should paint, anodize, powder coat, etc. now before installation onto vehicle. PEEL OFF THE VINYL PROTECTANT COVERING BEFORE PAINTING OR FINISHING (if Necessary). If Hood Louver Panel was ordered black powder coated your now ready to continue to step 1.**

## **Hood Louver Panel Installation**

**Step 1 - As a safety precaution - Remove the hood from your vehicle before drilling or cutting.**

First, remove the engine grounding strap using 10mm Socket, hood light, and windshield washer hose(s) from hood. Then unbolt the 4 Torx bolts from the hood hinges using the T-50 Torx. Hood should now be free to remove from vehicle.

**Step 2 - Once the hood is removed, place the hood on a flat, solid work area. Then remove u-shape footmans loop bracket using the 9mm Socket. Remove the black plastic/rubber windshield bumpers by unclipping from the underside of the hood.**

**Step 3 - Place painters/masking tape either on the hood or backside of the steel template to prevent any scratching.**

**Step 4 - Place steel template in the center of hood as shown in (Figure 1). Reinstall the footmans loop and windshield bumpers. This will locate the template in the appropriate location. Verify alignment of template around windshield squirter.**



**Figure 1**

Step 5 - Once located properly temporarily tape in a couple places to hold template while drilling first two holes. Using 3/16" Bit, drill one hole through the template and hood at one corner, as shown in (Figure 2). Install and tighten the supplied 10-32 screw and nut. Then drill a second hole in the opposite corner of template and install and tighten supplied 10-32 screw and nut. This will ensure template stays in place while drilling and cutting.

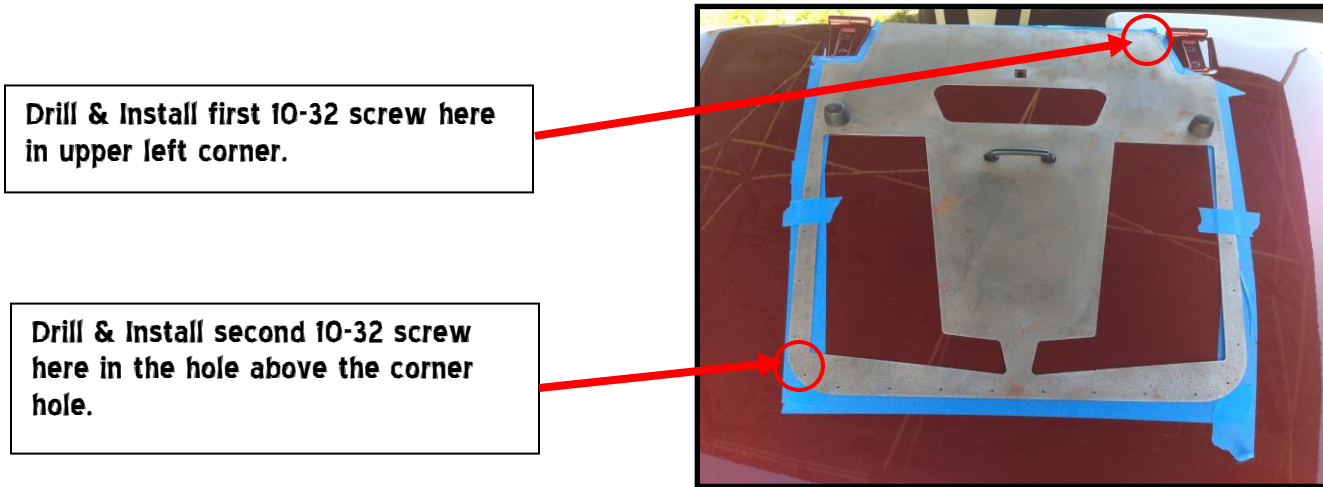


Figure 2

**\*\*Important\*\* DO NOT MOVE TEMPLATE UNTIL STEP #7**

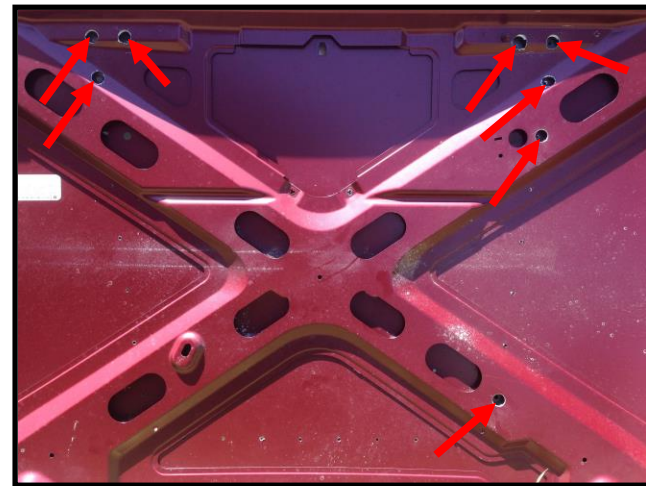
**NOTE: USE 1/16" DRILL BIT AS PILOT HOLE FOR 1/4" DRILL BIT TO ENSURE BETTER ACCURACY!**

Step 6 - Drill through all the holes in the template using the 1/16" bit. You will have to drill through the hood reinforcement bracing in some spots so be sure to drill all the way through both the hood and bracing.

Step 7 - Using a marker or scribe trace the cutouts onto the hood. Once you remove the template you'll be able to use these lines to cutout the air vent panels.

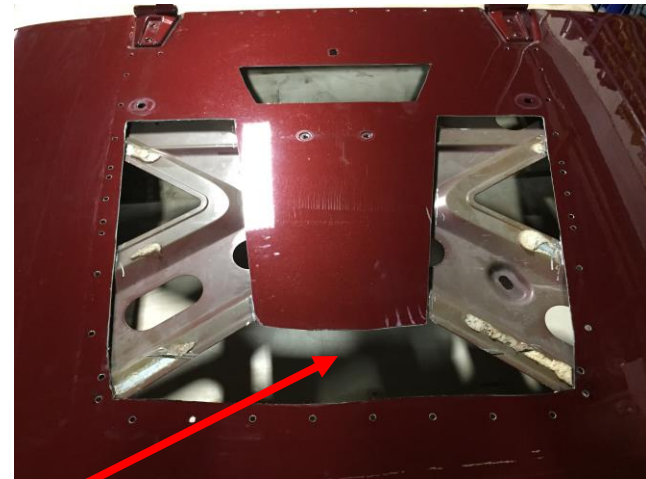
**Step 8 - After all holes are drilled using 1/16" pilot bit and cutouts are traced, you may now remove the template. Now use the 1/4" Bit to drill out the pilot holes 38 Holes Total.**

**\*\*NOTE\*\* You will need to use the 1" hole saw to expand some holes drilled in the hood reinforcement bracing from underneath the hood, 8 times. See arrows in Figure 3.**



**Figure 3**

**Step 9 - Use 1" Hole saw again and drill each corner of the 3 cutouts (14 times total). The purpose of using the hole saw in each air vent cutout is so you have a nice, clean corner radius you can cut up to. You can then use the cutoff wheel to cut each air vent panel out. When cutting be careful to only cut through the hood sheet metal, NOT the hood reinforcement bracing. It's okay if you cut into the bracing slightly, but not completely through all.**



**Figure 3**

**Note: The center support in the cutting template is there just for strength. This area can be cut out (as shown) if desired. It's okay to leave it in tact as well.**

**Step 10 - Use a file or sandpaper to deburr any sharp edges from panel cutouts and/or drilled holes. Remove masking tape also if necessary.**


**\*\*MUST READ BEFORE MOVING TO STEP 11\*\***

**Lubricate Nylock Nut Threads With WD-40 or Similar Lubricant Prior To Installing. DO NOT USE A PENETRANT & DO NOT OVERTIGHTEN NUTS. Penetrant products are corrosive which will melt nylon locknut materials and overtightening will cause distortion on Hood & Louver Panel.**

Step 11 - Carefully install the Hood Louver Panel onto hood. Do not damage any threads on studs when installing the louver panel. If any holes need to be opened for proper fitment, drill them open slightly. Using the 3/8" Nut Driver fasten nylon locknuts to threaded studs. Tighten nuts just enough until they touch the steel hood. **\*\* DO NOT OVERTIGHTEN LOCKNUTS\*\***

Step 12 - Re-install hood onto vehicle and re-mount footmans loop and windshield bumpers.

Send your OFFROAD pictures to [pics@HylineOffroad.com](mailto:pics@HylineOffroad.com) . If we choose any one of your pictures to be used on our website, We send you a FREE Hyline Offroad T-Shirt.

 **Attention** Installation instructions provided must be read and followed exactly when installing product. Failure to do so could potentially result in injury or death of any occupants in the vehicle. WEAR SEAT BELTS AT ALL TIMES WHEN DRIVING!

Though our products are rugged, they are primarily designed and built to enhance the appearance of the vehicle and will not protect from death or injury in the event of an accident. Adhere to all vehicle manufacturers specifications.