

## Rear Bumper Replacement Installation Instructions

**94500**

Jeep Wrangler / Wrangler Unlimited 2007 - 2016



### 94201 Components

- 1) Rear Bumper
- 1) Bumper Mounting Bracket (Driver)
- 1) Bumper Mounting Bracket (Passenger)
- 1) 94500 Hardware Kit

### 94500 Hardware Kit Contents

- 6) 1/2" - 13 x 1 1/2" Hex Bolts (Gr. 8)
- 6) 1/2" Flat Washers
- 6) 1/2" Lock Washers

### **Note: Completely read instructions before beginning installation!**

1. Remove contents from the box and check for missing pieces or damage. If parts are missing or damaged, please contact original place where item(s) were purchased.
2. Remove the 4 bolts from the bumper brackets on the framereils (2 on each framereil). Save hardware for later use. (See Fig. 1)
3. Remove the 4 screws at the back of the rear inner fender wells that go into the bumper. (2 in each fenderwell)
4. Remove the 2 bolts from the rear crossmember that secure the factory rear bumper brackets, and loosen the 2 top bolts and swing the brackets up above the rear crossmember. (See Fig. 2)
5. Remove the trailer wiring plug from the factory bumper and remove the factory bumper.
6. Remove the rear tow hook from the frame. (See Fig. 3)
7. Insert the new rear bumper mounting brackets into the framereils and line up the welded nuts of the brackets with the 2 oval holes on the outside of each framereil (See Fig. 4) and loosely install the lower (1) 1/2" - 13 x 1 1/4" bolt, (1) 1/2" lock washer, and (1) 1/2" washer into each rear bracket (See Fig. 5) to make installation of the rear bumper easier.
8. Place the new rear bumper assembly onto the rear of the vehicle and install the 4 bolts previously removed in step #2 to hold the bumper in place.
9. Install the remaining (4) 1/2" - 13 x 1 1/4" bolts, each with (1) 1/2" lock washer and (1) 1/2" flat washer through the bumper and framereils and into the rear bumper mounting brackets. Adjust the bumper to level and tighten all mounting hardware. (See Fig. 6)

## Rear Bumper Replacement Installation Instructions

**94500**

Jeep Wrangler / Wrangler Unlimited 2007 - 2016

Fig. 1



Fig. 2



Fig. 3

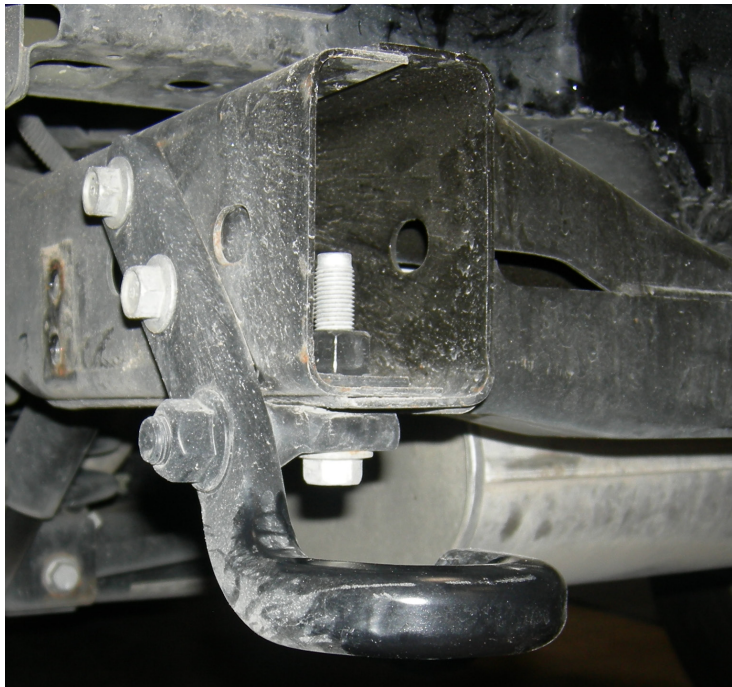


Fig. 4





## Rear Bumper Replacement Installation Instructions

**94500**

Jeep Wrangler / Wrangler Unlimited 2007 - 2016

Fig. 5



Fig. 6

