



P.O. Box 1719
 Corona, CA 92878
 Support: 951-493-7100
 www.aFeFilters.com

Intake Kit Installation Instructions: Jeep Wrangler 2007 V6-3.8L (JK)

Kit Part #	51-11252 54-11252 75-11252	Tools Required:	Part List:	2 Screws, 3/8"
Make:	Jeep	5/16" nut driver	1 Air Filter (replacement #24-30018 / ProGUARD 7™ 72-30018) (ProDRY S™ P/N 21-30018)	1 Temp Sensor Grommet
Model	Wrangler (JK)	9/16" socket w/ extension and ratchet	1 Housing	1 7/16" trim seal @ 23"
Year	2007	9/16" open/box end wrench	1 Coupler reducer (05-00135)	1 Intake tube
Engine	V6-3.8L	1/4" nut driver	1 Coupler reducer (05-00136)	4 Clamp #048
		10mm socket w/ extension and ratchet	1 Clamp, mini #006	
			2 Nut, 3/8"	
			4 Washer, 3/8"	



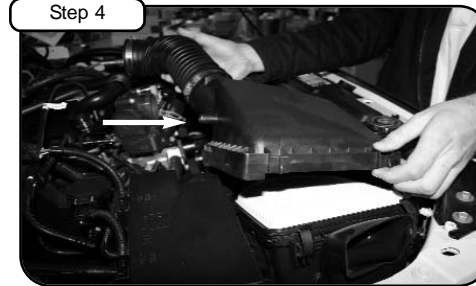
Step 1
Complete kit with parts.



Step 2
Complete stock intake.



Step 3
Loosen clamp using 5/16" nut driver @ Throttle body.



Step 4
Disconnect crankcase line @ OE airbox. Disconnect OE clips holding in upper half of OE airbox. Remove upper half of airbox out of vehicle.



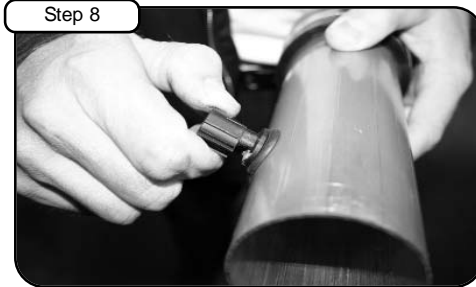
Step 5
Carefully pull out bottom half of airbox. (caution, this may require some force)



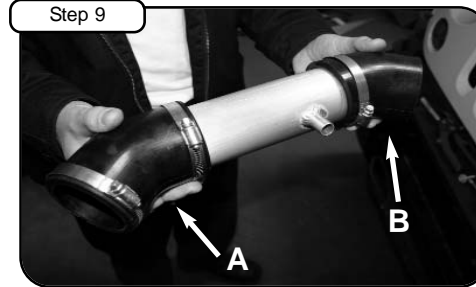
Step 6
Loosen 10mm bolt holding in airbox bracket.



Step 7
Install trim seal to housing and place in to vehicle. Retighten bolt from step 6. With screws provided, tighten down both bolts using 9/16" socket or wrench.



Step 8
Remove Temp sensor from OE intake tube and place on to new aFe intake tube with grommet provided.



Step 9
Place both coupler reducers on to ends of new tube with clamps provided. **A)** coupler part # 05-00135 **B)** coupler part # 05-00136



Step 10
Install 3" end of coupler to housing side and 2 3/4" coupler to throttle body side. (make sure temp sensor side of tube is near throttle body side) Tighten clamps using 5/16" nut driver.



Step 11
Re-install Crankcase line to new tube with mini clamp provided and tighten using 1/4" nut driver. Place high FLOW filter into housing and tighten using 5/16" nut driver.



Step 12
Your installation is now complete. Check all clamps and hoses periodically. Thank you for choosing aFe!

Note: Filter Cleaning and Re-oiling: When cleaning your aFe filter, be sure to use only aFe's "Restore Kit" (aFe P/N: 90-50001 blue oil aerosol, or aFe P/N: 90-50501 blue squeeze bottle oil or aFe P/N: 90-50000 gold oil aerosol, or aFe P/N: 90-50500 gold squeeze bottle oil).
 Filter Replacement: Magnum FLOW PN: 24-30018 (black w/blue media) or ProGUARD 7™ PN: 72-30018 (black w/gold media) ProDRY S™ cleaning: see cleaning instruction sheet 06-00074 ProDRY S™ P/N 21-30018