

Jeep Wrangler JK

2007 2 & 4-Door Front

Pair Part # 10045

Revision F 05-19-08



Step 1:

Prior to Installation:

- A) **Fit:** Verify the fit of the flares to vehicle. (Some filing, sanding, or cutting may be necessary to ensure proper fit).
- B) **Painting:** (Optional) if paint is desired it must be done prior to installing flares on the vehicle clean outer surface with a good grade degreaser. **DO NOT USE LACQUER THINNER OR ENAMEL REDUCER AS A DEGREASER.** Wipe outer surface thoroughly with a tack rag prior to paint.
Paint flares using a high quality enamel, or polyurethane automotive paint. (Application of a primer coat is optional)
If painting edge trim (not recommended), use a flex additive.
- C) **Performance:** Using larger Tires may increase the area required to turn the vehicle. Some Tire/Rim combinations may require lowering bump stops and or installing steering stops to prevent tire from contacting flare.
- D) **Exhaust System:** Modifications may be necessary to maintain a minimum 4" clearance between flares and exhaust pipes. (Exhaust gases should not vent directly onto flares)
- E) **Metal Protection:** All exposed fasteners and bare metal should be treated with red oxide primer BEFORE installing flares. Spray inner fender wells with undercoating AFTER flare attachments have been completed.

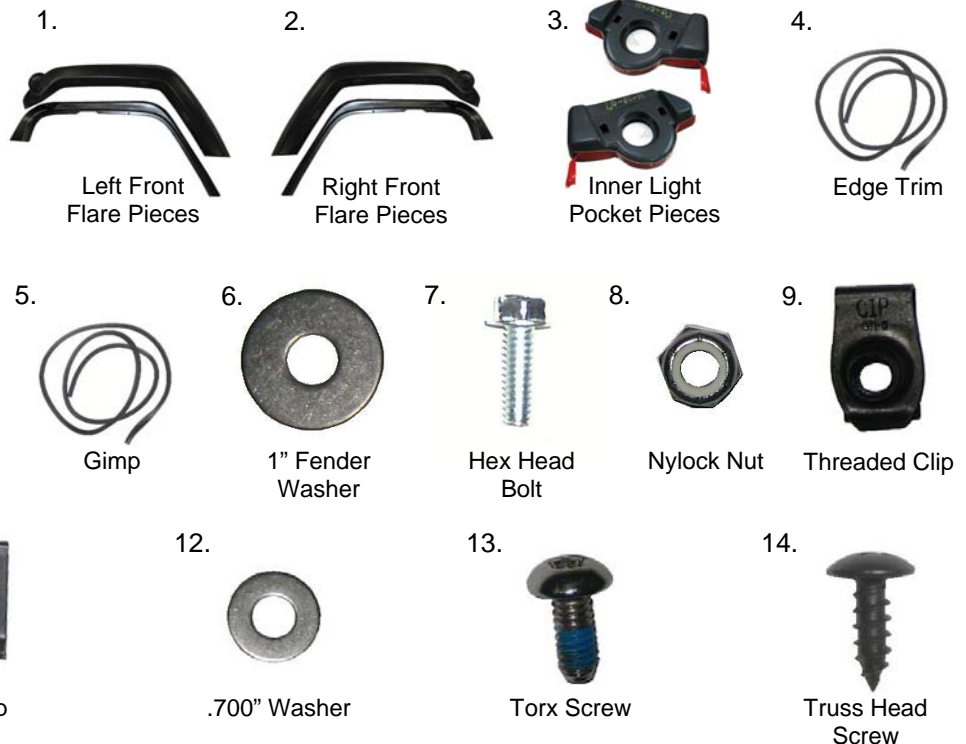
TOOLS FOR EASY INSTALLATION

- Pry Tool
- Flat Head Screwdriver
- Socket Wrench
- 10mm Socket
- Electric Drill
- 5/16" Drill Bit
- Soft Wiping Cloth
- Isopropyl Alcohol
- T45 Torx Bit
- Grease Pencil
- Hack Saw
- #2 Phillips Screwdriver
- Masking Tape
- Vise Grips
- Awl

NOTE: THESE INSTRUCTIONS INVOLVE CUTTING PARTS OF THE VEHICLE. IT IS IMPORTANT TO READ ALL INSTRUCTIONS PRIOR TO CUTTING AND INSTALLATION OF FLARES.

PARTS INCLUDED IN KIT

1. Left Front Flare Pieces (Inners/Outers)
2. Right Front Flare Pieces (Inners/Outers)
3. Inner Light Pocket Pieces (Left and Right)
4. Edge Trim (136 inches)
5. Gimp (140 inches)
6. 1" Fender Washer (32 pieces)
7. Hex Head Bolt (16 pieces)
8. Nylock Nut (16 pieces)
9. Threaded Clip (16 pieces)
10. Plastic Phillips Head Tuf-Lok (20 pieces)
11. #14 U-Clip (12 pieces)
12. .700" Washer (16 pieces)
13. Torx Screw (16 pieces)
14. Truss Head Screw (12 pieces)



FLARE INSTALLATION PROCEDURES

Step 2: Edge Trim Installation (See Illustration #1)

NOTE: Edge trim (C shape) will be installed on the OUTER flares only.

- A) Peel two to three inches of red backing away from edge trim tape. Applying the adhesive side of the edge trim to the inner side of the outer flare, affix the edge trim to the top edge of the outer flare. **See Illustration #1.**
- B) Press edge trim into place along the top edge of the outer flare in one-foot increments, pulling red backing free as you continue to work your way around the top edge of the outer flare.

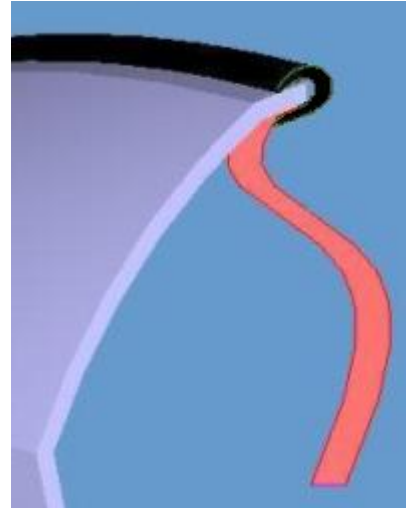
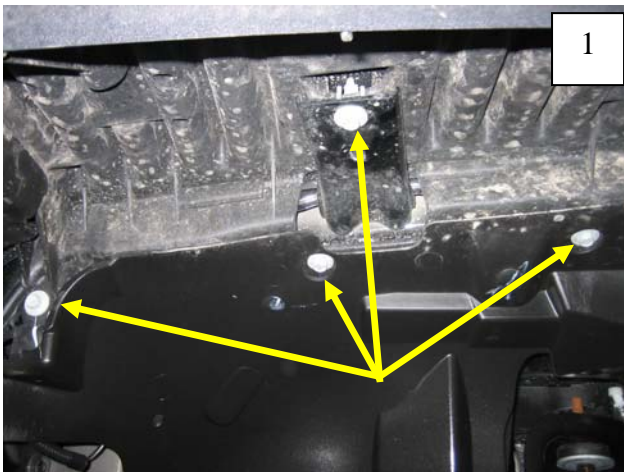


Illustration #1

Step 3: Front Factory Flare Removal (See Photos #1 through #8)



Using a socket wrench with a 10mm socket, remove four factory bolts from inside of splash shield. Retain all bolts.



Using a socket wrench with a 10mm socket, remove one bolt located in hole inside of splash shield.



Remove light receptacle from light lens housing, letting it hang free of the housing.



Starting at front of flare, pull firmly to release flare and splash shield from fender, working your way to the back. You will hear popping noises as clips release. It is O.K. if clips break, they will be discarded.



5

Once flare is free of fender, disconnect light connector. This will allow the flare to come away from fender completely. Remove light housing from factory flare; you will be reinstalling this later.



6

Using a pry tool or flat head screwdriver, remove any plastic clips that have remained in fender.



7

To remove inner structure and splash shield from factory flare, use a pry tool or flat head screwdriver to remove four plastic fasteners.



8

Use a drill with a 5/16" bit to drill through six plastic rivets along edge of flare/splash shield. Discard the flare, but retain the splash shield and inner structure.

Step 4: Front Flare Installation (See Photos #9 through #48)



9

Clean fender area thoroughly with a soft clean cloth.



10

Make sure gimp and inner flare are clean. Peel 2" of liner from gimp (pin shape). Carefully position gimp as uniformly as possible along radius as shown, peeling liner as you go. Gimp can be repositioned as needed. NOTE: it is better for gimp to be slightly below radius rather than above.



11

When positioning gimp around latch section of front, make sure round edge of gimp is positioned below the edge of the part. (Gimp will continue over entire length of part.)



12

After gimp is properly placed, press to adhere properly and cut ends flush with ends of inner flare.



13

Position Inner Flare Piece on fender, aligning existing 5/16" holes in Inner Flare Piece with holes in fender. Slide a supplied 1" Fender Washer onto a supplied Hex Head Bolt.



14

From inside of fender, hold a supplied 1" Fender Washer over hole. Insert a Bolt/Washer assembly through Inner Flare Piece, fender, and washer on backside of fender.



Using a vise grip, place a supplied Nylock Nut on the backside of the Bolt. Start bolts but do not tighten (8 places). Once all bolts have been started, tighten all bolts.



Bolt locations.



Install supplied Threaded Clips, with the thread side in, over holes in Inner Flare Piece (8 places). Make sure clips are centered over holes.



Threaded Clip locations.



Using a grease pencil, trace a line along the base of the first and second spines of the factory inner structure as shown. This line will be cut in Step 21.



Draw a line from the corner of the cut out diagonally across the ribs of the factory inner structure as shown. NOTE: Line placement can vary 1/2" inch in either direction from shown.



21

Using a hacksaw or SawsAll, carefully cut along lines made in Steps 19 and 20 to remove from portion of factory inner structure. Retain rearward piece.



22

Using a Phillips screwdriver, reassemble inner structure and splash shield by installing supplied Plastic Phillips Head Tuf-Loks (6 places). Use a pushing-twisting motion to install.



23

Plastic Phillips Head Tuf-Lok locations.



24

Drill one 5/16" hole in tab at forward area of splash shield as shown. The point of the drill should be approximately 5/16" down from top and 1/2" in from edge of tab.



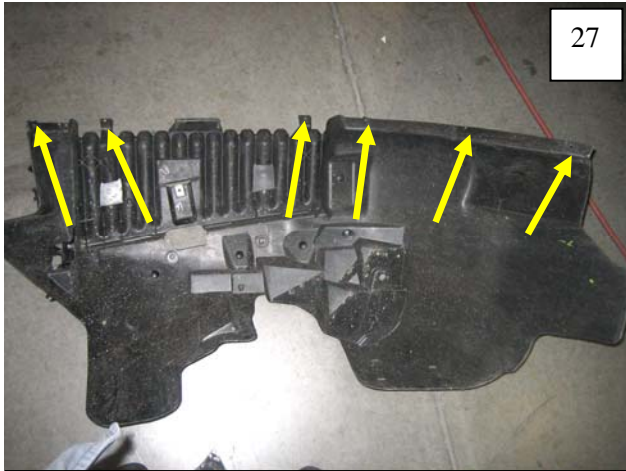
25

Use a flat head screwdriver to spread supplied #14 U-Clips for ease of installation.



26

Install supplied #14 U-Clips over hole drilled in Step #24 and five existing holes in splash shield.



27

#14 U-Clip locations.



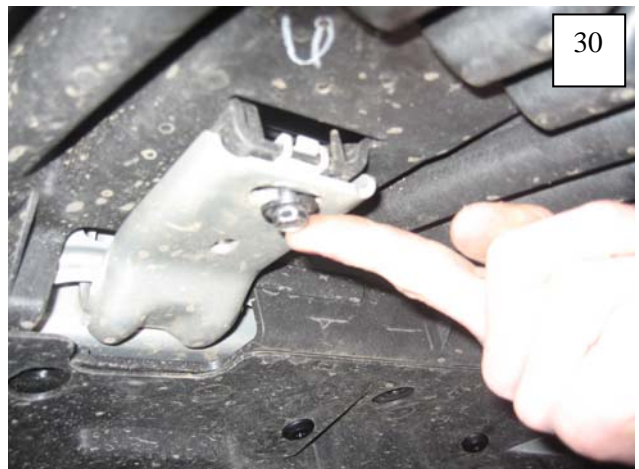
28

Replace factory inner structure/splash shield in fender as shown, sliding hole in structure over metal fender bracket.



29

Reinstall the factory bolt in hole in splash shield as shown.



30

Start a factory bolt through inner structure and into bracket as shown. NOTE: It is easier to start bolts with your hands.



31

Tighten Bolt using a socket wrench with a 10mm socket.



32

Install a supplied Plastic Phillips Head Tuf-Lok in hole located toward the front of the splash shield.



33

Reinstall the factory bolt at front of splash shield.



34

Reinstall two factory bolts as shown.



35

Slide the Christmas Tree Clip on light cord in towards vehicle body approximately 1".



36

Reinstall Christmas tree Clip in hole in Factory Inner Structure. Reconnect light cord to wire harness.



37

Carefully cut or grind factory light bezel along lines shown. Take care not to cut light lens.



38

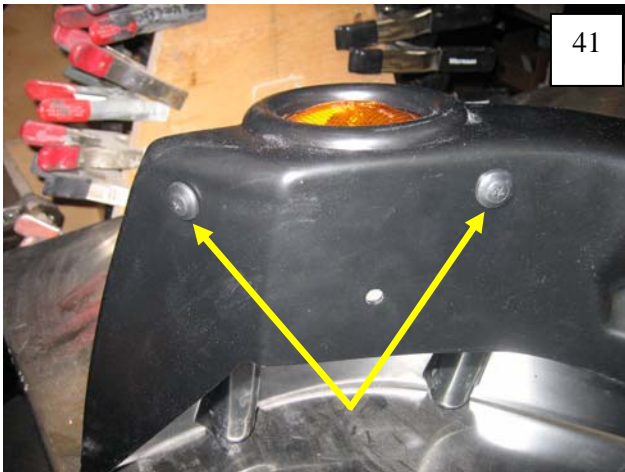
Peel liner completely from two pieces of 1/4" tape located on face of Light Pocket Inner Piece. Fold tape liner tab attached to long 1/2" piece of tape upwards (do NOT peel liner from 1/2" tape in this step).



Press light bezel into Light Pocket Inner Piece, snapping tab into hole in Light Pocket Inner Piece.



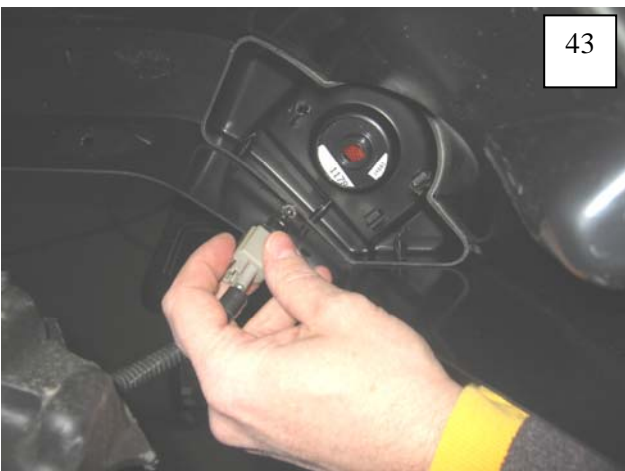
Place Light Pocket Inner Piece with light bezel into inside of Front Flare, aligning light lens with hole in flare. NOTE: Make sure tape liner is protruding from part for ease of liner removal.



Install supplied Plastic Phillips Head Tuf-Loks (2 places). Use a pushing-twisting motion to install. Gently pull tab to peel tape liner from 1/2" tape and press in to place.



Fold tape liner tab attached to 1/2" piece of tape on outer edge of Inner Flare Piece upwards (do NOT peel liner from 1/2" tape in this step).



Reconnect light receptacle to light lens, then position Front Flare over Inner Flare Piece.



Install supplied Truss Head Screws through holes in wheel well and into #14 U-Clips installed in Step 25 (6 places). Ensure proper alignment of outer flare, inner flare, and splash shield. **Do not tighten.**



Truss Head Screw locations.



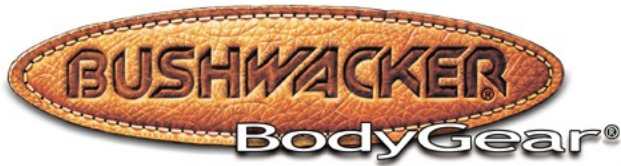
Slide a supplied .700" Washer onto a supplied Torx Screw.



Start Screws/Washers through pocket holes in Outer Flare and into Threaded Clips installed in Step 18 (8 places). **Do not tighten.**



Pull tape liner from tape and press part to secure tape. Tighten all Truss Head Screws first, then tighten Torx Screws, moving from back to front.

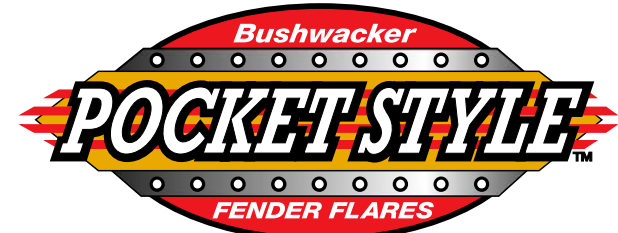


Jeep Wrangler JK

2007 2-Door Rear

Pair Part # 10046

Revision E 05-06-08



Step 1:

Prior to Installation:

- A) **Fit:** Verify the fit of the flares to vehicle. (Some filing, sanding, or cutting may be necessary to ensure proper fit).
- B) **Painting:** (Optional) if paint is desired it must be done prior to installing flares on the vehicle clean outer surface with a good grade degreaser. **DO NOT USE LACQUER THINNER OR ENAMEL REDUCER AS A DEGREASER.** Wipe outer surface thoroughly with a tack rag prior to paint.
Paint flares using a high quality enamel, or polyurethane automotive paint. (Application of a primer coat is optional)
If painting edge trim (not recommended), use a flex additive.
- C) **Performance:** Using larger Tires may increase the area required to turn the vehicle. Some Tire/Rim combinations may require lowering bump stops and or installing steering stops to prevent tire from contacting flare.
- D) **Exhaust System:** Modifications may be necessary to maintain a minimum 4" clearance between flares and exhaust pipes. (Exhaust gases should not vent directly onto flares)
- E) **Metal Protection:** All exposed fasteners and bare metal should be treated with red oxide primer BEFORE installing flares. Spray inner fender wells with undercoating AFTER flare attachments have been completed.

TOOLS FOR EASY INSTALLATION

- Pry Tool
- Flat Head Screwdriver
- Electric Drill
- 5/16" Drill Bit
- Soft Wiping Cloth
- Isopropyl Alcohol
- T45 Torx Bit
- #2 Phillips Screwdriver
- Masking Tape
- Vise Grips
- Awl

NOTE: THESE INSTRUCTIONS INVOLVE CUTTING PARTS OF THE VEHICLE. IT IS IMPORTANT TO READ ALL INSTRUCTIONS PRIOR TO CUTTING AND INSTALLATION OF FLARES.

PARTS INCLUDED IN KIT

1. Left Rear Flare Pieces (Inners/Outers)
2. Right Rear Flare Pieces (Inners/Outers)
3. Edge Trim (136 inches)
4. Gimp (140 inches)
5. Threaded Clip (16 pieces)
6. Plastic Phillips Head Tuf-Lok (14 pieces)
7. #14 U-Clip (12 pieces)
8. .700" Washer (16 pieces)
9. Torx Screw (16 pieces)
10. Truss Head Screw (12 pieces)
11. Plastic Push Retainer (20 pieces)



Left Rear Flare Pieces



Right Rear Flare Pieces



Edge Trim



Gimp



Threaded Clip



Plastic Phillips Head Tuf-Lok



#14 U-Clip



.700" Washer



Torx Screw



Truss Head Screw



Plastic Push Retainer

FLARE INSTALLATION PROCEDURES

Step 2: Edge Trim Installation (See Illustration #1)

NOTE: Edge trim (C shape) will be installed on the OUTER flares only.

- A) Peel two to three inches of red backing away from edge trim tape. Applying the adhesive side of the edge trim to the inner side of the outer flare, affix the edge trim to the top edge of the outer flare. **See Illustration #1.**
- B) Press edge trim into place along the top edge of the outer flare in one-foot increments, pulling red backing free as you continue to work your way around the top edge of the outer flare.

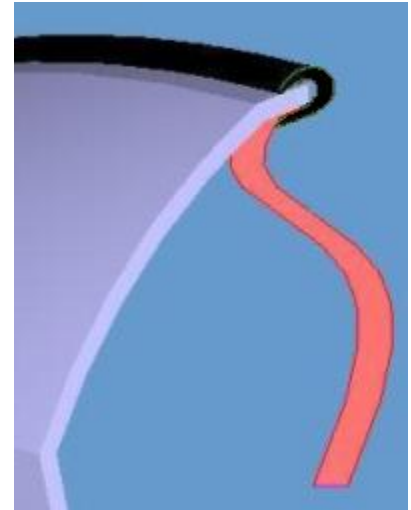


Illustration #1

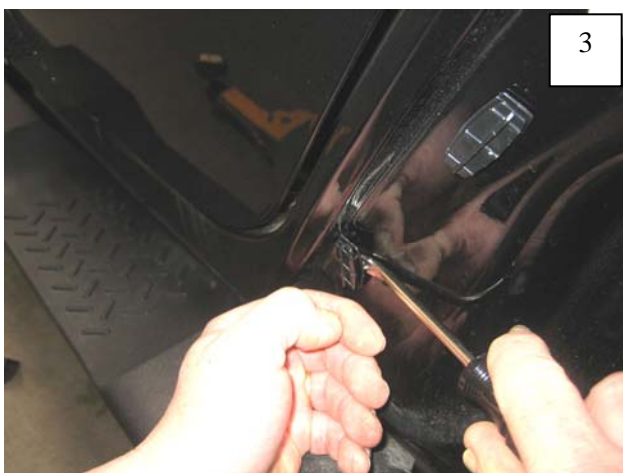
Step 3: Rear Factory Flare Removal (See Photos #1 through #4)



Using a pry tool, pliers, or a flat head screwdriver, remove six plastic fasteners from inside of splash shield.



Starting at front of flare, pull firmly to release flare and splash shield from fender, working your way to the back. You will hear popping noises as clips release. It is O.K. if clips break, they will be discarded.



Using a pry tool or flat head screwdriver, remove any plastic clips that have remained in fender.



Use a drill with a 5/16" bit to drill through six plastic rivets along edge of flare/splash shield. Discard the flare, but retain the splash shield. **NOTE:** It is helpful to angle the drill while drilling the rivets.

Step 4: Rear Flare Installation (See Photos #5 through #27)



Clean fender area thoroughly with a soft clean cloth and isopropyl alcohol.



Make sure gimp and inner flare are clean. Peel 2" of liner from gimp (pin shape). Carefully position gimp as uniformly as possible along radius as shown, peeling liner as you go. Gimp can be repositioned as needed. NOTE: it is better for gimp to be slightly below radius rather than above.



When positioning gimp on narrow end of rear, fold flat edge of gimp over the edge of the part. (Gimp will continue over entire length of part.)



After gimp is properly placed, press to adhere properly and cut ends flush with ends of inner flare.



Position Inner Flare Piece on fender, aligning existing 5/16" holes in Inner Flare Piece with holes in fender. Install supplied Plastic Push Retainers (9 places).



Push Retainer locations.



11

Install supplied Threaded Clips, with the thread side in, over holes in Inner Flare Piece (8 places).



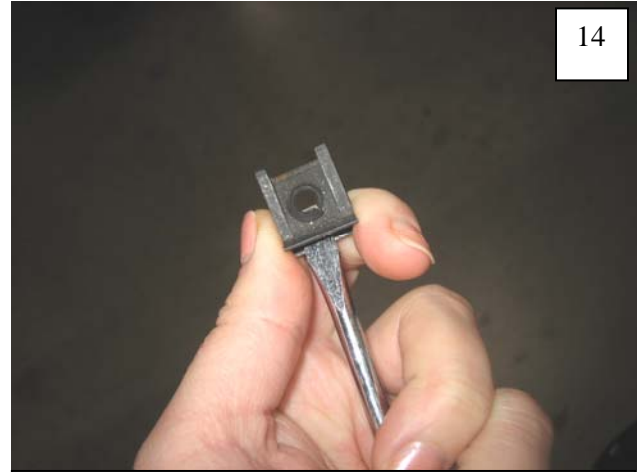
12

Threaded Clip locations.



13

On backside of splash shield, use a utility knife to trim two plastic ribs flush with splash shield surface.



14

Use a flat head screwdriver to spread supplied #14 U-Clips for ease of installation.



15

Install supplied #14 U-Clips over existing holes in splash shield (5 places). Flat side will be visible once splash shield is reinstalled.



16

#14 U-Clip locations. NOTE: The rear-most hole will NOT have a clip.



17

Position splash shield in wheel well, and install two supplied Plastic Phillips Head Tuf-Loks in upper pockets using a pushing-twisting motion.



18

Install four supplied Plastic Phillips Head Tuf-Loks through splash shield and into vehicle body as shown.



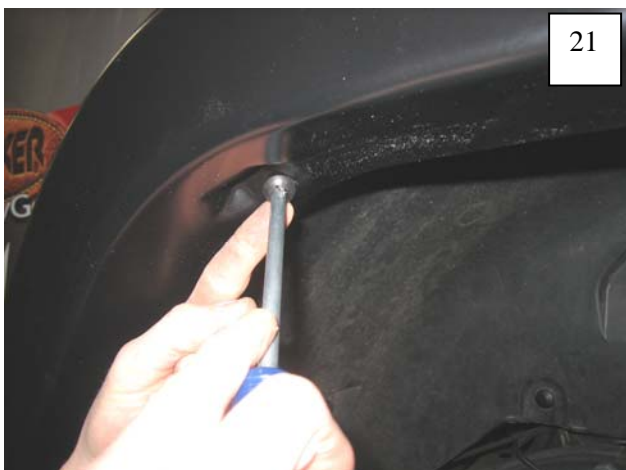
19

Position Rear Flare over Inner Flare Piece. Slide a supplied .700" Washer onto a supplied Torx Screw.



20

Start Screws/Washers through pocket holes in flare and into Threaded Clips installed in Step 11 (8 places) starting at the front and working your way to the back. Do not tighten.



21

Install supplied Truss Head Screws through holes in wheel well and into #14 U-Clips installed in Step 15 (5 places).



22

Truss Head Screw Locations.



23

Holding the splash shield firmly, drill through rearmost hole in flare and through the splash shield using a 5/16" bit.



24

Remove three rearmost screws installed in Step 20.



25

Pull the splash shield out from behind flare and install a supplied #14 U-Clip over hole drilled in Step 23. This hole will be located slightly above existing hole in splash shield.



26

Replace splash shield, and install a supplied Truss Head Screw through rearmost hole in flare and into clip installed in Step 25. Reinstall three pocket screws removed in Step 24.



27

Ensure fit, and tighten all screws