



1987-2006 Jeep Wrangler Top Prop™ Installation Instructions

Thank you for purchasing your new Skid Row Offroad Top Prop. It is certain to make your Jeep driving experience more pleasant and comfortable. Your Top Prop can be used with any fabric top to prevent the accumulation of water during rainstorms or just when washing your Jeep. It will also prevent the top from flapping, which makes for a much quieter driving experience.

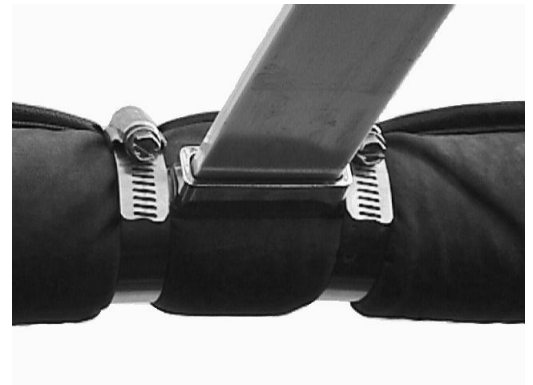
Your Top Prop package should come complete with the following parts:

1. (1) 48" Long Slat
2. (2) Bow Sockets
3. (4) Stainless Steel Hose Clamps
4. (4) Sheet metal Screws

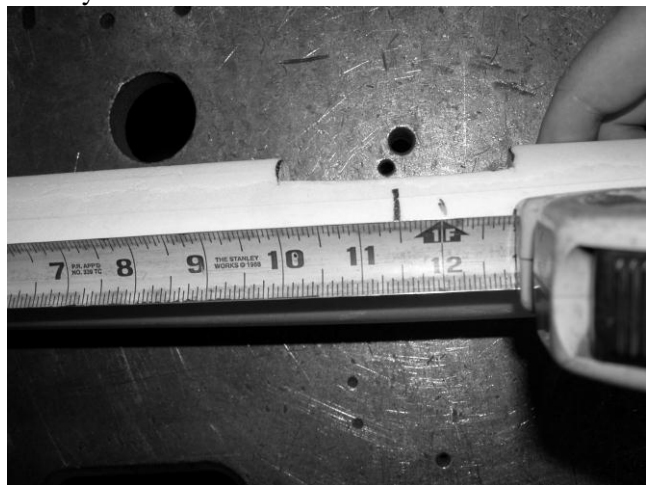
Please read the instructions *completely* before starting installation. It will save you time and should prevent you from having any problems.

The Top Prop should be installed with the top up and completely fastened. The instructions will vary slightly depending on which model year your Jeep is.

1987-2002: Simply take one of the hose clamps provided and fit it loosely around the roll bar tube that extends forward above the door. Attach one of the bow sockets to the roll bar by placing its lip under the clamp and tightening as shown in the photo at right. The bow socket should be attached approximately in the center of the bar with the opening in the socket facing upwards. There is no need to remove the padding from the tube. Use one clamp for each side of the bow socket and make sure that the screw portion of the clamp is towards the top inside of the roll bar tube as shown. Install the second bow socket on the other side of the vehicle and then skip to **Installing the Screws**.



2003-2006: Remove the fabric cover from the roll bar tube that extends forward above the door. Mark the location on the padding where you want to place the Top Prop. It should be roughly centered above the door. Then remove the foam padding from the tube being careful not to break the foam. There are plastic fasteners along the bottom of the padding that you simply pull out of holes in the roll bar tubing. Place a bow socket along the top edge of the padding, centered around the mark, and draw a line around it as shown in the photo below left. Then cut away the padding material as shown in the photo below right. **Note:** The location isn't critical. We measured 11.5" on our '03 TJ, but due to various model changes and options, this may not work for you.



2003-2006 Continued: Take two of the hose clamps provided and fit them loosely around the roll bar tube. Attach one of the bow sockets to the roll bar by placing its lip under the clamps and tightening, but don't tighten them completely. Make sure to leave the clamps loose enough to allow the clamp to be repositioned. Then reinstall the padding positioning the clamp in the opening you cut. It should look as shown in the photo at right. Then tighten the clamps. Install the second bow socket on the other side of the vehicle. Reinstall the fabric covers and using a razor blade, make an opening through the material to allow the slat to slide into the bow socket.



Installing the Screws: The clamps can be removed and replaced by the sheet metal screws provided, if desired. However, it is not necessary to perform this step since the clamps will hold the Top Prop in place permanently. They will also allow you to remove your Top Prop easily using only a straight-blade screwdriver.

However, if you want to use the sheet metal screws instead of the hose clamps, the fabric top will need to be removed in order to permit drilling of the holes. Remove one clamp and using a 1/8" drill bit, drill a hole into the roll bar tube. Install the first screw and then remove the other hose clamp. Repeat the procedure for the other clamps making sure that all of the screws are tight. Also, be sure that the bow sockets don't move while drilling.

Note: Wear gloves while handling the fiberglass slat to prevent yourself from getting any splinters in your hands. If you do get a fiberglass splinter, use a piece of duct tape to remove it by placing the sticky side over the splinter and then quickly pulling it away. Yet another use for duct tape!

Installing the Slat: Simply insert one end of the slat into one of the bow sockets, push the slat up in the middle, and insert the other end of the slat into the other bow socket. That's all there is to it!

We hope you enjoy your Skid Row Offroad Top Prop!

Sincerely,

The Staff at SFK Manufacturing, LLC

SFK Manufacturing, LLC

PO Box 306, Shermans Dale, PA 17090

Phone 717-701-8315

Fax 717-701-8316

www.SkidPlates.com