



JEEP WHEEL SPACER/ADAPTER KIT INSTRUCTIONS

GENERAL DESCRIPTION

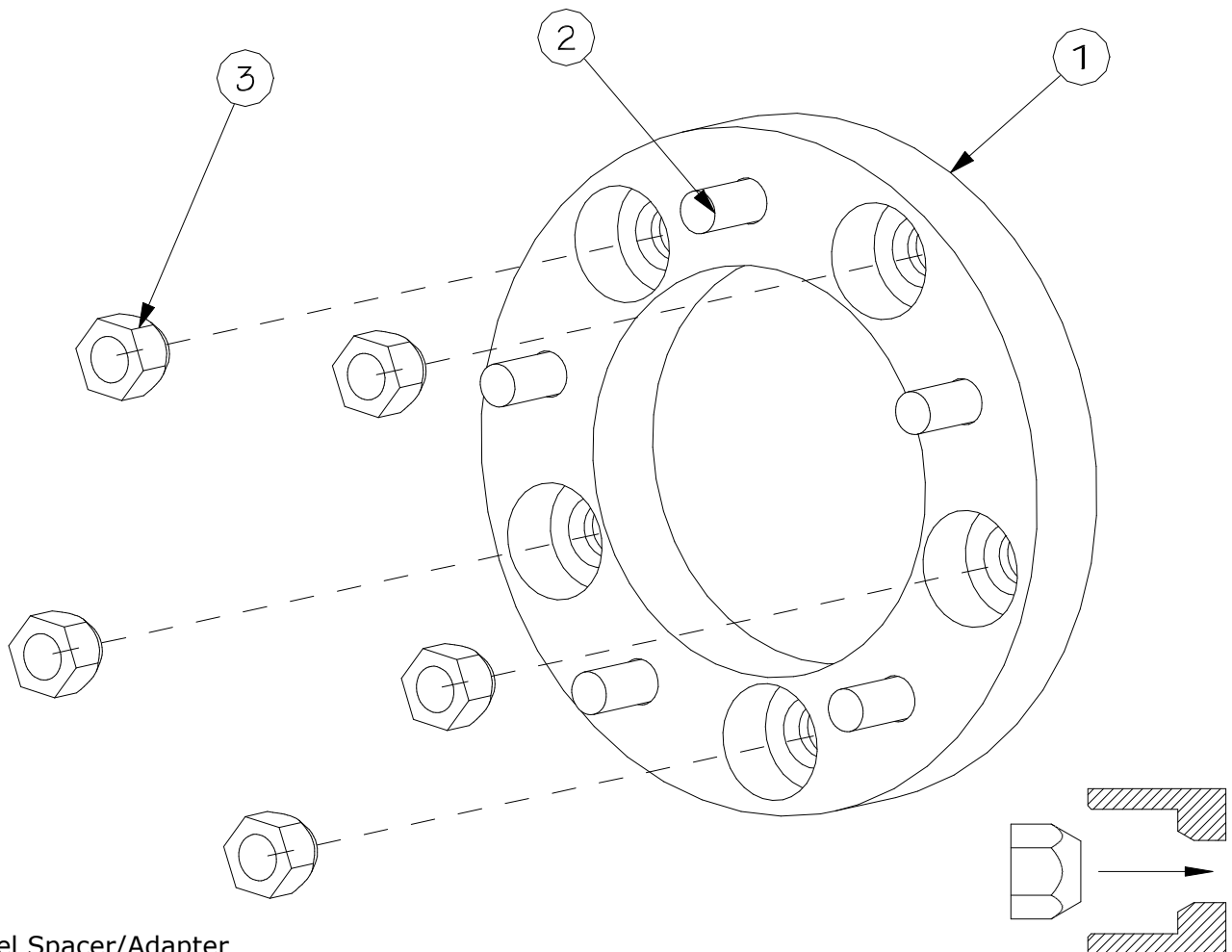
Each Spidertrax Wheel Spacer/Adapter Kit comes complete with 2 wheel spacers/adapters, 10 standard wheel studs (pre-installed), 10 lug nuts, and thread locker. All Spidertrax wheel spacers/adapters are anodized in dark blue, which is a double anodizing process for twice the corrosion resistance. Proudly made in Colorado, USA.

To install the Spidertrax Wheel Spacer/Adapter Kit, follow these steps:

- 1) Remove tire as per Jeep Service Manual procedure. Remove drum/rotor retainer clip(s) if present.
- 2) Apply provided thread locker to OEM wheel studs and assemble spacer/adapter to drum/rotor face using provided lug nuts. **Be sure that OEM wheel studs FULLY CLEAR wheel spacer/adapter so spacer fits flat against drum/rotor face.** Have another person apply brakes to prevent drum/rotor from spinning. Tighten lug nuts in a criss-cross pattern to 80-90 ft-lb. **Double check this torque after driving vehicle 50 miles.**
- 3) Re-assemble tire to wheel spacer/adapter using existing lug nuts. Tighten lug nuts in a criss-cross pattern to 80-90 ft-lb. **Do not use more than one spacer/adapter per tire.**

Spidertrax Disclaimers & Warranty Card is located on the back of these instructions.

Fig. 1



1. Wheel Spacer/Adapter
2. 1/2-20 Wheel Stud
3. 1/2-20 Lug Nut

Lug Nut Orientation



Disclaimers & Warranty

WARNING

INSTALLATION OF ANY COMPONENT OR SYSTEM SHOULD ONLY BE PERFORMED BY THOSE EXPERIENCED IN AUTOMOTIVE MECHANICS AND PROCEDURES.

Spidertrax warrants only to the original purchaser that all products will be free from defects in materials and workmanship. The foregoing warranty is subject to the proper installation, operation and maintenance of the product in accordance with the installation instructions supplied. Warranty claims must be made by the purchaser in writing within 30 days of the manifestation of a problem and purchaser must present acceptable proof of original ownership (such as copy of original receipt). Spidertrax reserves the right, before having any obligation under this Limited Lifetime Warranty, to inspect the damaged product and all costs of shipping the product to Spidertrax for inspection shall be borne solely by the purchaser. Spidertrax's sole obligation under the foregoing warranty is, at Spidertrax's option, to repair, replace or correct any such defect that was present at the time of delivery. The foregoing warranty is not transferable to another party and does not apply to any purchaser who bought the product from a reseller or distributor not authorized by Spidertrax.

FOR OFF-ROAD USE ONLY

DRIVE THE VEHICLE UNDER CONTROLLED CONDITIONS TO ENSURE PROPER INSTALLATION OF COMPONENTS. GRADUALLY WORK UP TO FOUR WHEELING SPEEDS.

WWW.SPIDERTRAX.COM



Product Instructions *Jeep Wheel Spacer/Adapter Kits*

WWW.SPIDERTRAX.COM