



FILTERS

www.sbfilters.com

INSTALLATION INSTRUCTIONS

S&B P/N 75-5025

**2007
JEEP Wrangler
3.8L V6**

* Kit may not fit vehicles with
body lift installed.

QTY PARTS LIST

- | | |
|---|---------------------|
| 1 | (J) Intake Tube |
| 1 | (A) Air Box |
| 1 | (C) Clear Lid |
| 1 | (M) step adapter |
| 1 | (I) Hump Adapter |
| 1 | (G) Filter Adapter |
| 1 | (K) # 8 Hose Clamp |
| 2 | (L) # 52 Hose Clamp |

QTY PARTS LIST (continued)

- | | |
|---|-------------------------------|
| 1 | (B) S&B Air Filter |
| 1 | (O) # 64 Hose Clamp |
| 2 | (H) # 72 Hose Clamp |
| 4 | (D) 10/24 SS Screws |
| 4 | (E) 10/24 SS Concave Washer |
| 2 | (F) 5/16-18 SS Screw |
| 1 | (N) 1/2 x .750 Rubber Grommet |

TOOLS REQUIRED

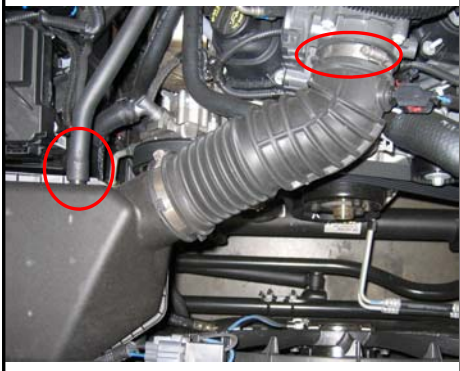
Phillips head screwdriver
10mm Socket or Wrench
5/16" Nut Driver or
Flat Blade Screwdriver

1. With the ignition switched off, disconnect
The negative battery cable.

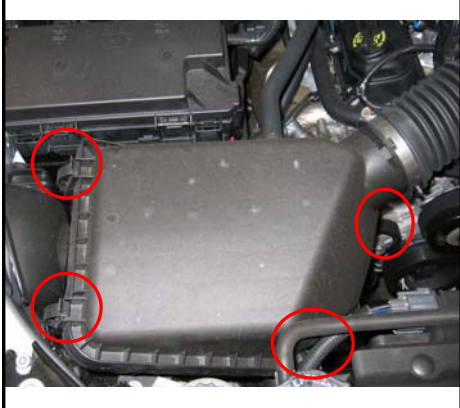
2. Disconnect the electrical connection for
the air temp sensor in the OE intake tube.



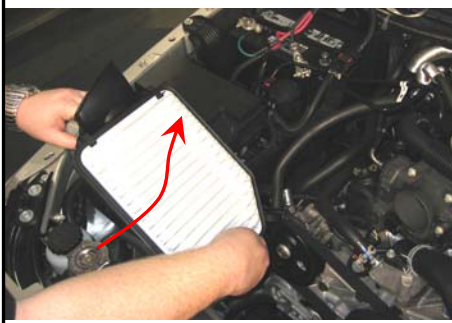
3. Loosen the hose clamp at the throttle
body and disconnect the crankcase vent line.



4. Unclip the air box lid and remove the lid
and tube assembly from vehicle.



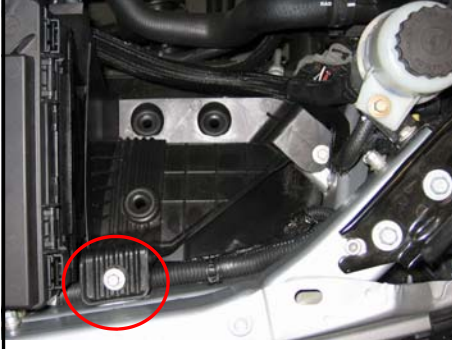
5. Pull up on the OE air box to remove it from
the vehicle, there are 3 barbed prongs seated
in rubber grommets on the bottom side.



6. Check to see that the 3 grommets re-
mained in the OE air box tray.



7. Remove the OE bolt from the OE air box
tray. Save for use with the S&B air box.



8. Place the S&B air box (A) in the vehicle,
insert prongs into OE grommets and push the
bottom downward to seat the prongs.



9. Use the previously removed OE bolt to
secure the S&B air box to the vehicle.



10. Attach S&B air filter (B) to S&B box adapter
(G), secure #64 hose clamp (O).

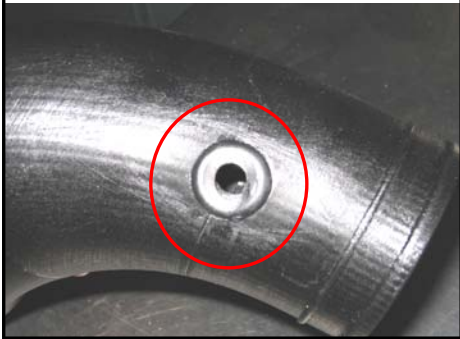


11. Place the S&B filter assembly into the S&B
air box. Once the filter is inside the box tilt the
adapter back so as to catch the hook on the
bottom, then secure with the 5/16 screws (F).



INSTALLATION INSTRUCTIONS (continued)

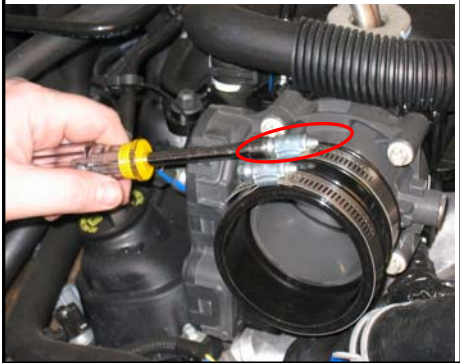
13. Install the supplied grommet (N) into the S&B intake tube (J).



14. Remove the Air Temp. sensor from the OE intake tube then insert it into the grommet in the S&B intake tube.



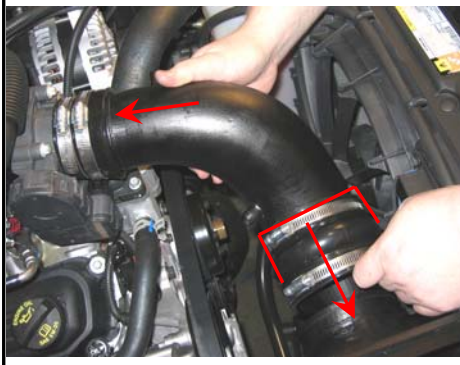
15. Install the S&B step adapter (M) over the throttle body and secure the # 52 hose clamp (L).



16. Slide the S&B hump adapter (I) over the S&B intake tube (J) until flush with the end.



17. Install S&B tube (J) into the step adapter (M) at the throttle body. Center the hump adapter (I) over gap between tube ends and secure both #72 hose clamps (H), then secure # 52 hose clamp (L) at the throttle body end.



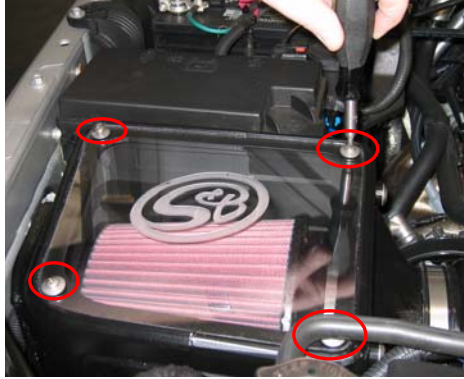
18. Connect the OE crankcase vent line from the engine to the S&B Intake tube (J), secure with #8 hose clamp (K).



19. Reconnect the air temp. sensor electrical connection.



20. Install the S&B clear lid (C), secure with the 10/24 screws (D) and concave rubber footed washers (E). Do not over tighten.



21. Reconnect the battery. Inspect your installation, make sure kit is properly positioned and all fasteners and connections are tight.

22. Adhere the C.A.R.B. exemption sticker in plain sight under the hood.

Smog Certification Note:

The California Air Resource Board (CARB) requires that an E.O. identification label be applied to the vehicle in order to pass a smog check inspection when a High Performance Intake Kit has been installed.

You must place the E.O. label provided on or near the intake kit after installation so that a smog check technician can easily verify the E.O. number.

PERFORMANCE TESTING

- * Engage parking brake and start your engine. Listen for abnormal noises. If an air leak is detected, re-inspect hoses and connections as they may need to be repositioned and tightened.
- * S&B FILTERS RECOMMENDS THAT YOU KEEP YOUR OEM INTAKE SYSTEM IN THE EVENT IT IS REQUIRED IN THE FUTURE.
- * In order to maintain your warranty, all connections and components must be checked periodically for alignment and for proper tension on all connections. Failure to do so will void your warranty.
- * Use only S&B Filter cleaning and oil products to service your filter. Using any other brand oil and or cleaners may void your warranty.

PRECISION CLEANING & OILING KIT



Part No. 88-0005

Order online today at www.sbfilters.com or through your local S&B Distributor



S&B PERFORMANCE FILTERS & INTAKE KITS

S&B PART NUMBER
75-5025

