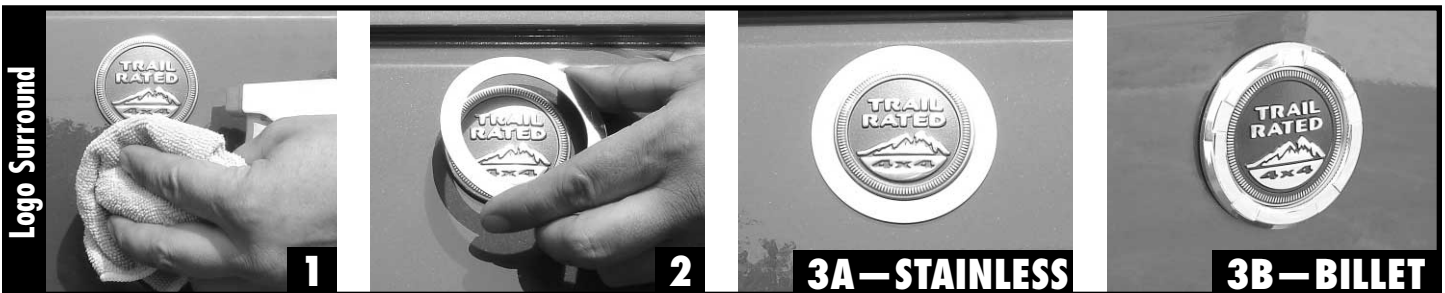
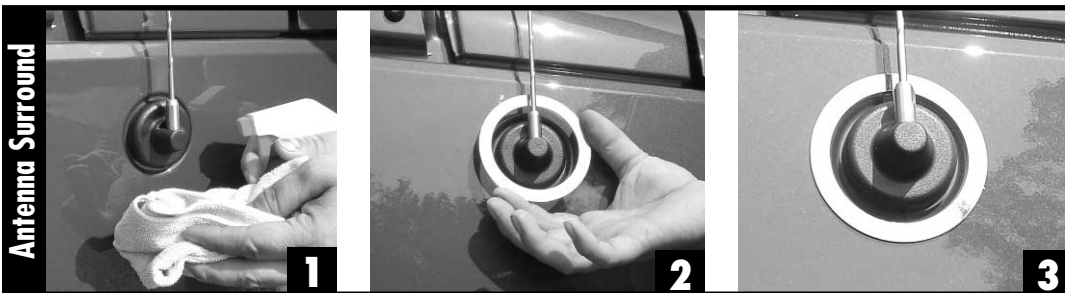
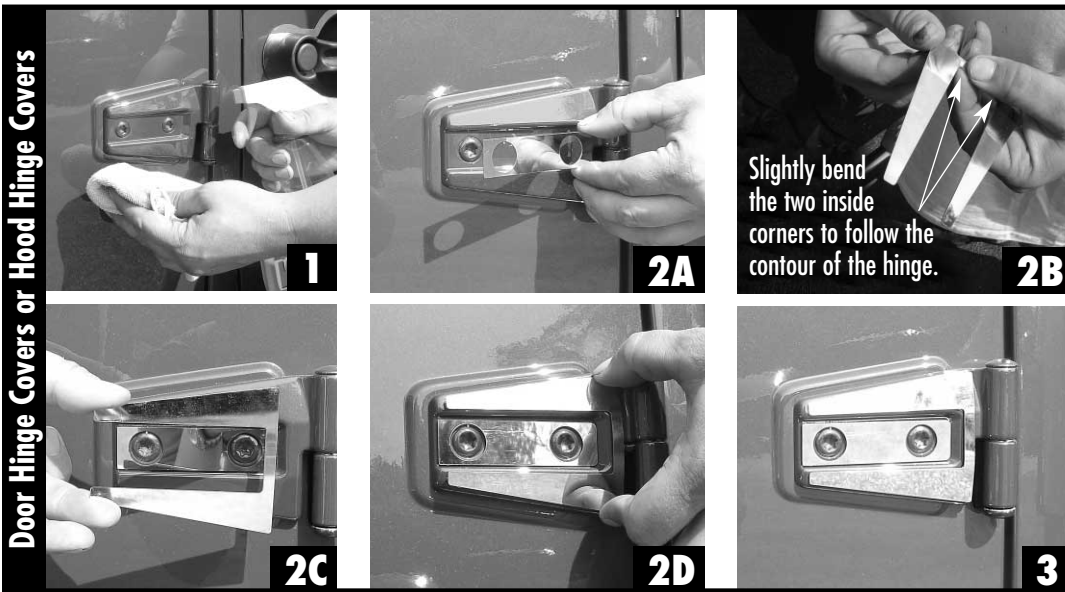
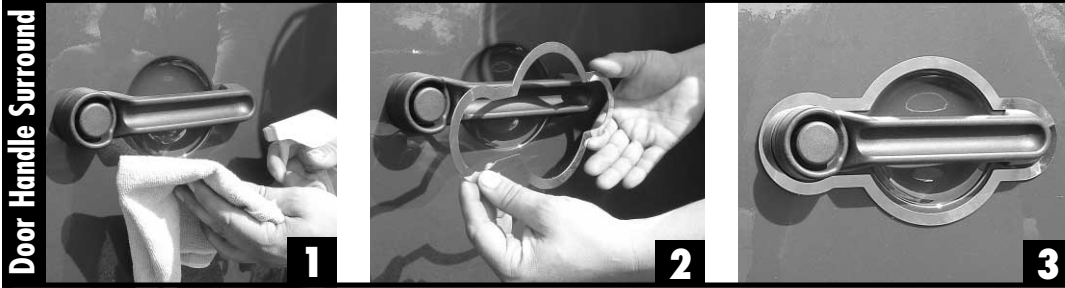


IMPORTANT: Read And Understand All Instructions Before Installation • QUESTIONS? CALL 1-800-982-1180



1. CLEAN THE AREA

Extremely Important: Clean the area where the trim is to be installed. If the area where the trim accessory is to be installed is not clean, dry, and free of any vinyl dressing, the trim accessory piece will not stick in place. Begin by cleaning the area thoroughly with a good non-residue cleaner such as Windex, or just clean thoroughly with soap and water and dry completely.

Important: For the Door Hinge Covers, you will need to slightly bend the two inside corners to follow the contour of the hinge. See Photo 2B.

2 & 3. POSITION & SECURE

Position and Adhere Trim. Before removing any heavy duty 3M Tape backing from the trim accessories, loosely place them in position on the Jeep to verify how it will fit. Make sure the part lines up with any openings and fits side-to-side and top-to-bottom. Next peel off all the paper from the double-sided tape on the back of one of the Trim pieces. Carefully place the Trim in position. Push and hold firmly for a few seconds.

RealWheels Corporation • 3940 Tannahill Drive • Gurnee, IL 60031

847-662-7722 • Fax 847-662-7744 • www.realwheels.com • info@realwheels.com • toll-free 1-800-982-1180