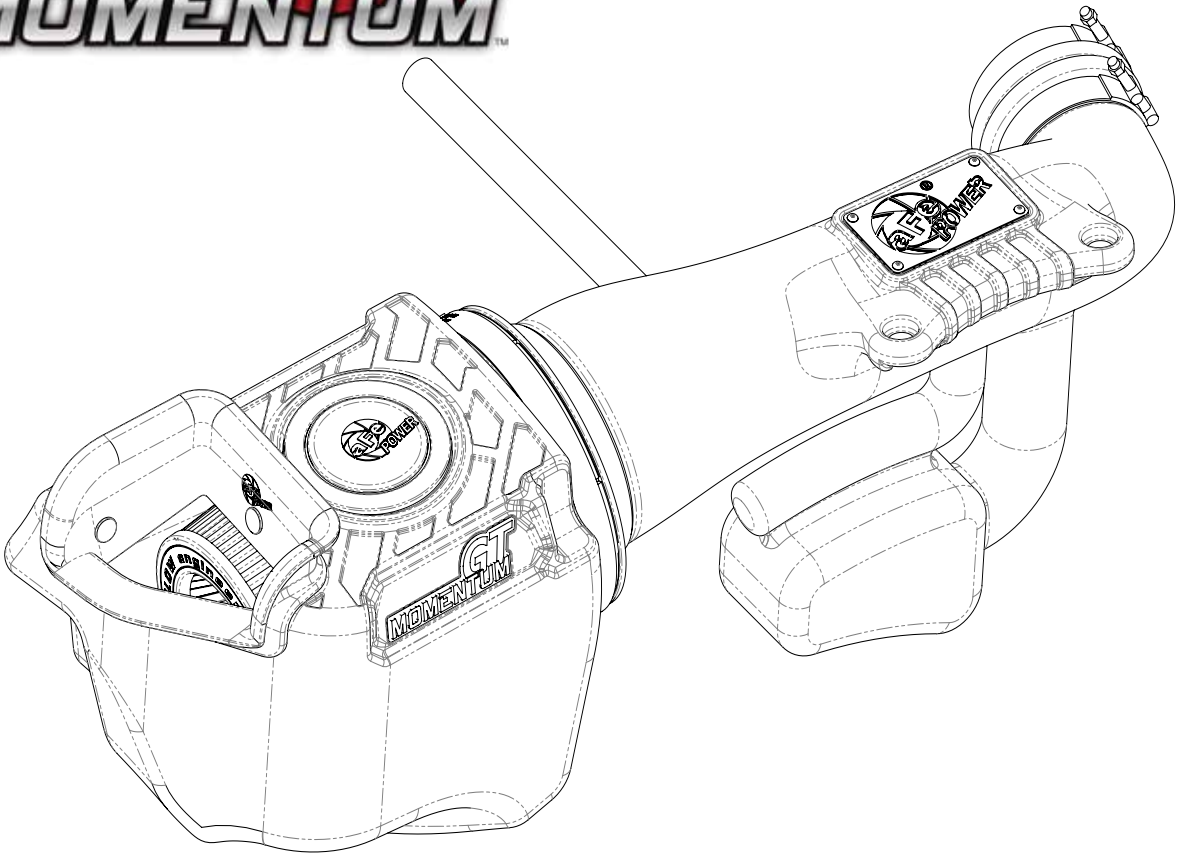


**GT**  
**MOMENTUM™**



**advanced FLOW engineering** Momentum Air Intake

**Instruction Manual** P/N: 51-76212 / 54-76212 / 75-76212

Make: **Jeep** Model: **Wrangler (JK)** Year: **2012-2018** Engine: **V6-3.6L**

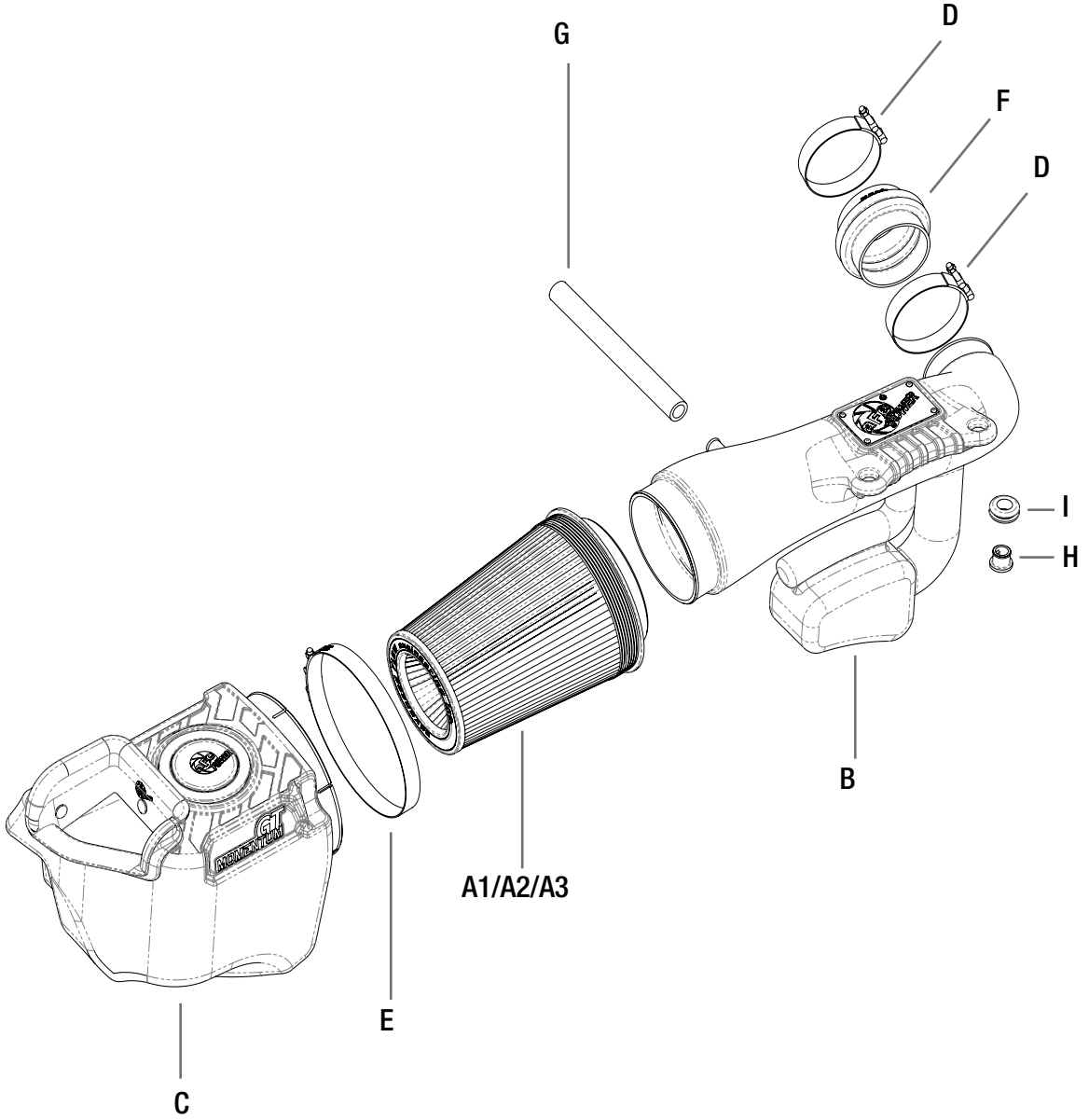


- Please read the entire instruction manual before proceeding.
- Ensure all components listed are present.
- If you are missing any of the components, call customer support at 951-493-7100.
- Ensure you have all necessary tools before proceeding.
- Do not attempt to work on your vehicle when the engine is hot.
- Disconnect the negative battery terminal before proceeding.
- Retain factory parts for future use.

Label	Qty.	Description	Part Number
A1	1	Air Filter (Pro DRY S)	21-91125
A2	1	Air Filter (Pro 5R)	24-91125
A3	1	Air Filter (Pro GUARD 7)	72-911125
B	1	Tube	05-76212B1
C	1	Housing	05-76212B2
D	2	Clamp, T-bolt, (3-5/16-3-5/8)	03-50292
E	1	Clamp, T-bolt, (7-7.38)	03-50290
F	1	Coupler, Silicone Bellows	05-01400
G	1	Hose, Fuel: 5/8" (9" inches)	05-00069
H	1	Fitting, Air Temp Sensor	05-01454
I	1	Grommet, Rubber	03-50167

Tools needed: 8mm nut driver, 10mm nut driver or deep socket, 11mm nut driver or deep socket.

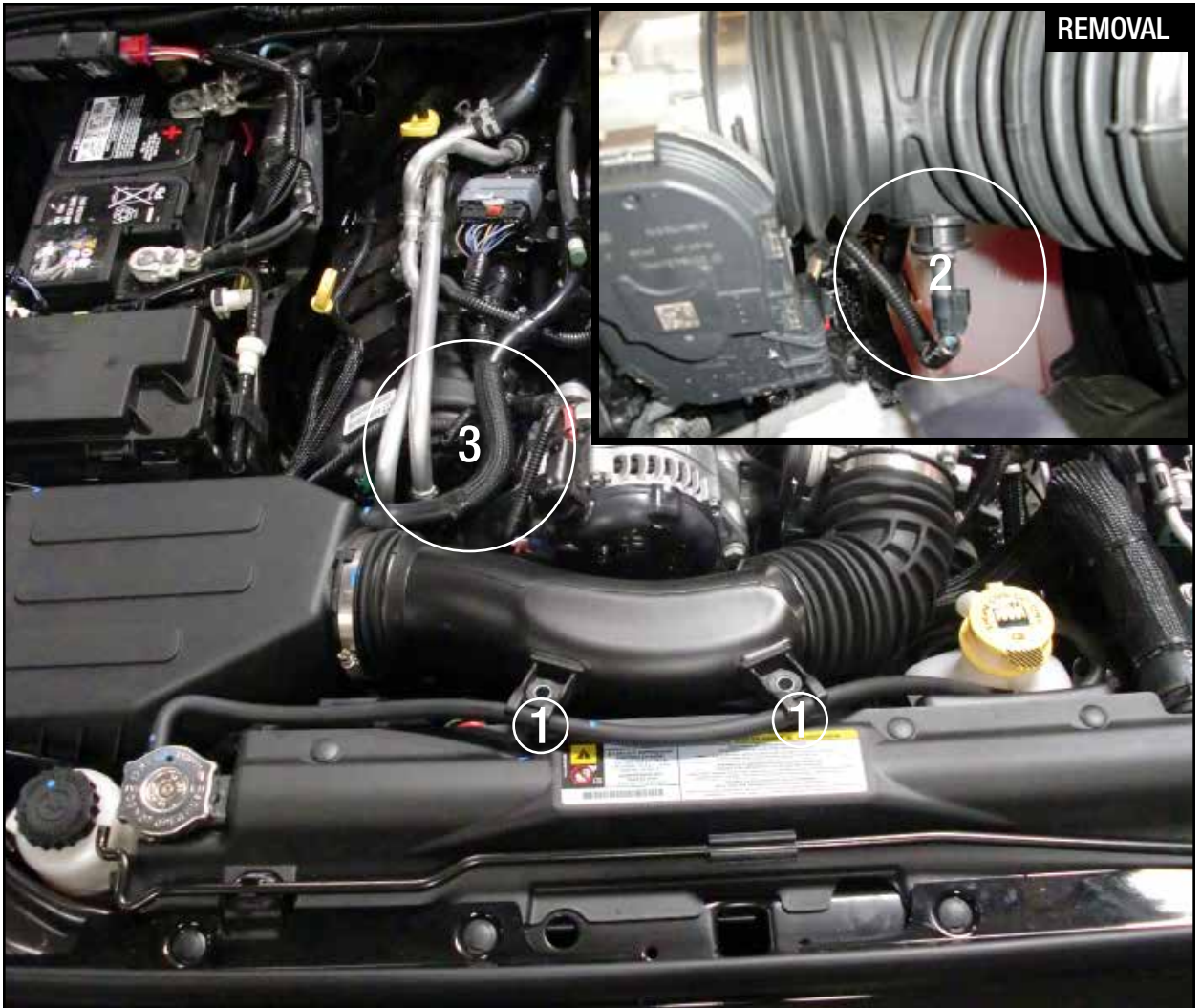
Note: Legal in California for use on race vehicles only. The use of this device on vehicles used on public streets or highways is strictly prohibited in California and others states that have adopted California emission regulations.





**Refer to Figure A for Step 1**

Step 1: Remove the engine cover by lifting firmly out of the vehicle.



**Refer to Figure B for Steps 2-6**

Step 2: Remove the two 10mm bolts from the intake tube. ①

Step 3: Disconnect the temp sensor wire harness. ②

Step 4: Loosen the hose clamp at the throttle body.

Step 5: Completely remove the small section of crankcase vent (CCV) hose. It should be pulled off of the air filter housing and the tube to the engine. ③

Step 6: Remove the stock intake tube, and air filter housing by pulling straight up and out of the vehicle.



Figure C

**Refer to Figure C for Step 7**

Step 7: Lift up on the small locking tab on the temp sensor, twist the sensor about 45 degrees counter-clockwise, and pull the sensor straight up to remove from stock intake tube.



Figure D

**Refer to Figure D for Steps 8-10**

Step 8: Install the large clamp loosely over the back of the air intake housing.

Step 9: Insert the aFe air filter into the housing and make sure the clamp is loose.

Step 10: Install the housing with the air filter into the rubber grommets.



Figure E

**Refer to Figure E for Steps 11-13**

Step 11: Install the grommet into the intake tube.

Step 12: Insert the plastic temp sensor adaptor into the grommet.

Step 13: Install the temp sensor into the plastic adaptor, and make sure the plastic tab locks into place.





Figure F

**Refer to Figure F for Steps 14-15**

Step 14: Remove the metal sleeves and rubber grommets from the OE intake tube and reinstall them into the new aFe intake tube as shown.

Step 15: Place the small t-bolt clamps loosely over the silicone coupler and slide the coupler onto the end of the intake tube.

**Figure G****Refer to Figure G for Steps 16-18**

Step 16: Route the coolant overflow line above the fan shroud as shown. ④

Step 17: Insert the large end of the tube into the aFe filter and plug in the temperature sensor.

Step 18: Install the coupler end of the intake tube over the throttle body.



Figure H

**Refer to Figure H for Steps 19-21**

Step 19: Install the new CCV hose provided between the intake tube and the hard plastic tube. ⑤

Step 20: The coolant overflow line should sit just under the mounting tabs on the intake tube.

Step 21: Secure the tube to the fan shroud with the two bolts removed previously.



Figure I

**Refer to Figure I for Steps 22-23**

Step 22: Tighten all four of the clamps at this time.

Step 23: Reinstall the engine cover. Your installation is now complete.

**NOTE: Check all bolts, clamps, and hose connections after 100-200 miles.**

Page left blank intentionally



Pro DRY S Air Filter



P/N: 21-91125

Pro 5R Air Filter



P/N: 24-91125

Pro GUARD 7 Air Filter



P/N: 72-91125

Blue Squeeze Restore Kit



P/N: 90-50501

Blue Aerosol Restore Kit



P/N: 90-50001

Gold Aerosol Restore Kit



P/N: 90-50000

Gold Squeeze Restore Kit



P/N: 90-50500

aFe Power Hat



P/N: 40-10083

Pro DRY S Restore Kit



P/N: 90-59999

To purchase any of the items above, view airflow charts, dyno graphs, photos, and video; please go to [aFepower.com](http://aFepower.com).

# Warranty

## General Terms:

- aFe warrants their products to be free from manufacturer's defects due to workmanship and material.
- This warranty applies only to the original purchaser of the product and is nontransferable.
- Proof of purchase of the aFe product is required for all warranty claims.
- Warranty is valid provided aFe instructions for installation and/or cleaning were properly followed.
- Proper maintenance with regular inspections of product is required to insure warranty coverage.
- Damage due to improper installation, abuse, unauthorized repair or alteration is not warranted.
- Incidental or consequential damages or cost, including installation and removal of part, incurred due to failure of aFe product is not covered under this warranty.
- All warranty is limited to the repair and/or replacement of the aFe part. To request Return Goods Authorization ("RGA"), email [RGA@afepower.com](mailto:RGA@afepower.com) or call (951)493-7100. Upon receipt of the RGA, you must return the product to the address provided in the RGA, freight prepaid and accompanied with a dated proof of purchase and the RGA. Upon receipt of the defective product and upon verification of proof of purchase, aFe will either repair or replace the defective product within a reasonable time, not to exceed thirty days.

Product Category	P/N Prefix	Warranty duration
Direct OE Replacement Filters	10, 11, 30, 31, 71, 73	Life of the vehicle
Racing Filters	18	1 year
Universal	21, 24, 72	2 years
Air Intake Systems	50, 51, 54, 55, 75	2 years
Exhaust Systems	49	2 years
Intercoolers & Intercooler Tubes	46-2	2 years
Intake Manifolds	46-1	2 years
Differential Cover	46-7	Life of the vehicle
Exhaust Manifolds	46	2 years
Throttle Body Spacers	46-3	2 years
Fluid Filters	44	90 days
Pre-Filters	28	2 years
Heavy Duty OE Replacement	70	2 years
PowerSports OE Replacement	81, 87	2 years
PowerSports Intake Systems	85	2 years

No other warranty expressed or implied applies nor is any person or advanced FLOW engineering authorized to assume any other warranty. Some States do not allow the exclusion or limitation of incidental or consequential damages or do not allow limitations on how long an implied warranty lasts, so the above limitations or exclusions may not apply to you. This warranty gives you specific legal rights, and you may also have other rights which vary from State to State.



**advanced FLOW engineering, inc.**  
252 Granite Street Corona, CA 92879  
TEL: 951.493.7100 • TECH: 951.493.7134  
E-Mail: [Tech@aFepower.com](mailto:Tech@aFepower.com)