



CFE PRODUCTS
JK CUSTOM SUBWOOFER SYSTEM
MODEL #JK-SUB-W
Jeep Wrangler JK
2007 & UP with factory subwoofer

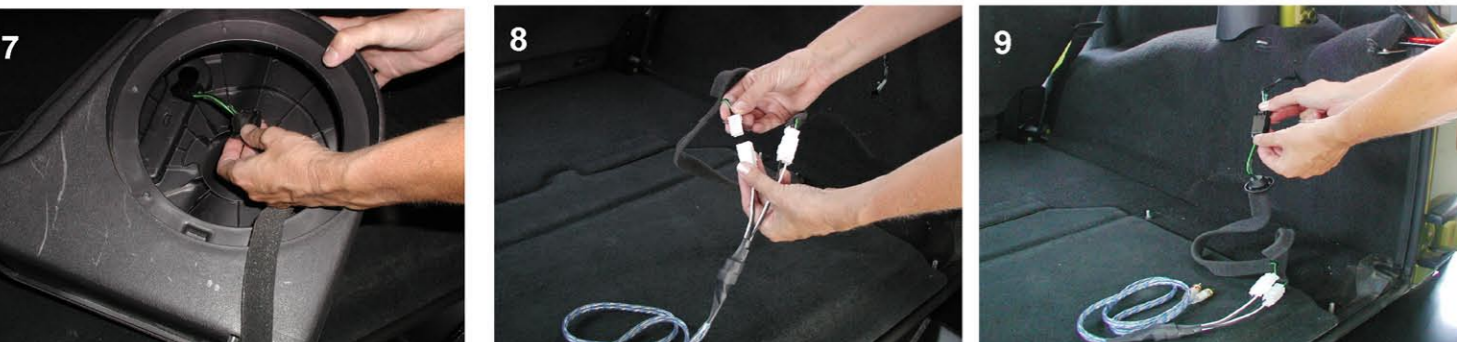
- Using A 15mm socket remove the 3 Nuts holding the Factory Subwoofer in place as shown in picture #1.
- Lift Sub up and unplug speaker wires from the Jeep harness by pushing the tab end of the connector and pulling out as shown in picture #2.
- Using a T20 torx wrench, remove the 6 screws holding the Factory Grill from the Subwoofer as shown in picture #3.



- Lift out Factory Sub and disconnect plugs as shown in picture #4.
- Using a flat edge screwdriver, pry the connector forward to release it from the rear of the housing as shown in picture #5.
- Using a flat edge screwdriver, push the rubber grommet into the Subwoofer housing to free the connector as shown in picture #6.



- Remove the Factory Harness as shown in picture #7.
- Plug the White Connectors on the supplied Blue Audio Harness into the White Connectors on the Factory Harness which was just removed from the housing as shown in picture #8.
- Reattach Harness to Jeep as shown in picture #9.



Questions or Comments ? call CFE PRODUCTS / 610 358 1886 / ASK FOR BOB

PAGE 1

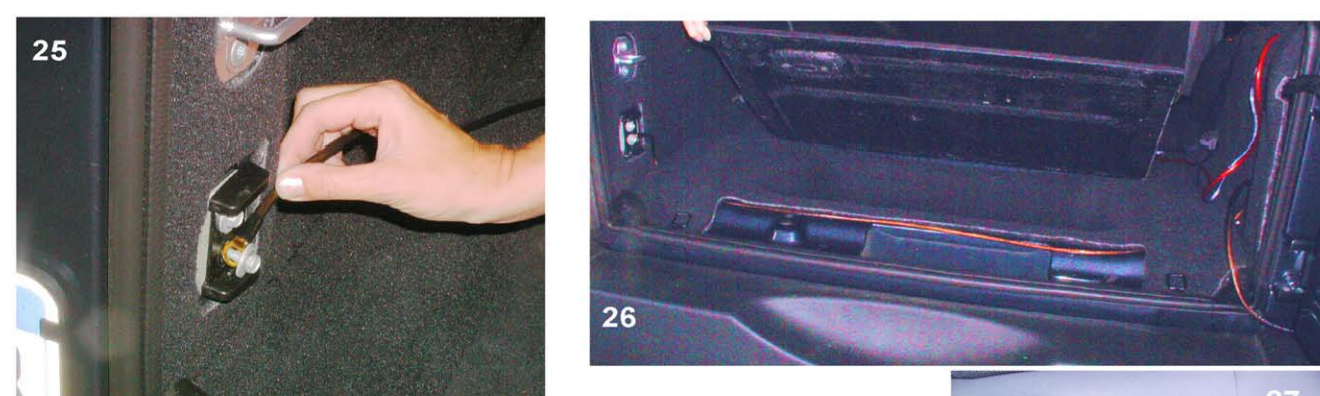


CFE PRODUCTS
JK CUSTOM SUBWOOFER SYSTEM
MODEL #JK-SUB-With factory sub

- Continue routing the Cable along the trim toward the back of the Jeep as shown. Use a flat edge screw driver or trim tool to assist in tucking the Cable along the side of the Roll Bar as shown in picture #22 and #23.
- Fold back carpet and continue routing Cable as shown. Feed the Red Power Cable & the Blue RCA Cable through the existing slot as shown in picture #24. **Keep the area in the White Circle in picture #23 in mind. This is where you will back excess Cable after the install is complete.



- Using a 10mm socket, attach the supplied Ground Wire to the Bolt on the Left Side of Jeep rear as shown in picture #25.
- Lift storage compartment lid and run the Cable toward the right side tucking the Ground Wire under the carpet edge as shown in picture #26.



- At this point you know have to make a decision where you would like to locate the Base Control Knob (pictured to the right) on your center console. This is a control that will be used frequently and should be located for easy access. Picture #27 shows one possible location option. Run the wire from the Base Control Knob to the rear of the Jeep to meet the other wires.



Questions or Comments ? call CFE PRODUCTS @ 610 358 1886 / ASK FOR BOB

PAGE 4



CFE PRODUCTS
JK CUSTOM SUBWOOFER SYSTEM
MODEL #JK-SUB-With factory sub

Turn On Checklist

- Re-Install the Power Cable Fuse at the Battery.
- Adjust the Remote Base Knob at the mid position.

To get the best overall sound, you want to leave the base control on your radio set to 0 to -2 and use the Remote Base Control to adjust the base level. This keeps the low base out of the rest of your speakers which allows them to do a better job on the midrange and high frequency.

WARNING This system is capable of tremendous bass output. The first time you use it, adjust the volume up slowly. There will be a 3-5 second delay before the bass amp turns on.

- Turn the Radio on with the Volume at a very low level (just loud enough for you to hear it).
- Adjust the radio tone controls as follows:

Base Control- 0
 Midrange Control- +2
 Treble Control- +6

If you have any questions about how the system works or need technical support for the installation, call Bob 610-358-1886 (hopefully before you make smoke)

5. ROCK OUT

Questions or Comments ? call CFE PRODUCTS @ 610 358 1886 / ASK FOR BOB

PAGE 7

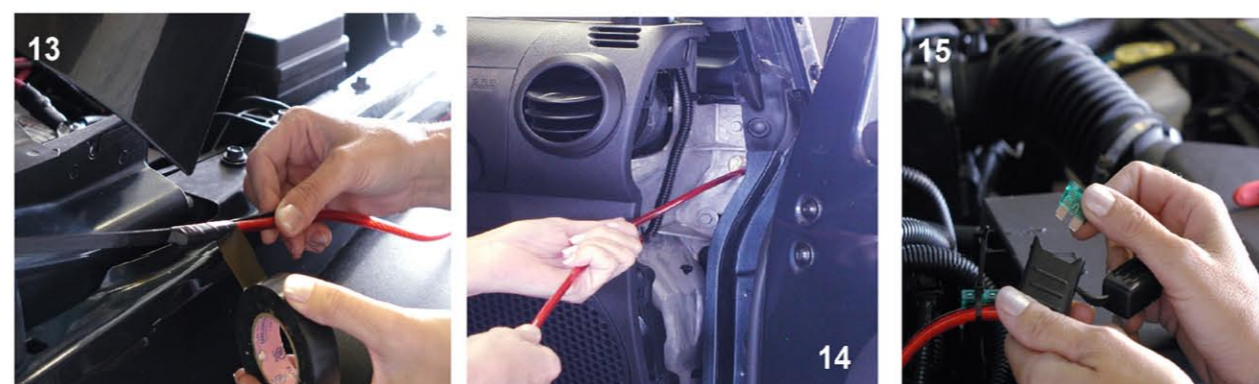


CFE PRODUCTS
JK CUSTOM SUBWOOFER SYSTEM
MODEL #JK-SUB-W
WITH FACTORY SUBWOOFER

- Use a flat edge to remove the side dash panel as shown in picture #10.
- Poke a hole through the foam in the opening as shown and fish the Large Tie Strap through the hole as shown in picture #11 & #12. (Extended length screwdriver is recommended)



- Uncoil the Red 8 Gauge Power Cable and attach the end without the Fuse Holder to the tie strap with black tape as shown in picture #13
- Pull the Power Cable through the hole into the Jeep as shown in picture #14.
- Remove Fuse from Fuse Holder as shown in picture #15. **The Fuse will not be replaced until the installation is complete.**



Questions or Comments ? call CFE PRODUCTS / 610 358 1886 / ASK FOR BOB

PAGE



CFE PRODUCTS
JK CUSTOM SUBWOOFER SYSTEM
MODEL #JK-SUB-W
WITH FACTORY SUBWOOFER

- Run one piece of 30" Wire Loom onto the Power Cable on the engine side and the other 30" piece of Wire Loom on the Cable on the Jeep side as shown in picture #16 and #17.
- Attach Wire Loom with 6" Tie Strap the Jeep Frame as shown in picture #18.



- Using a 10mm socket, remove the Nut on the Positive Battery Terminal as shown. Remove the nut carefully so that the Battery Cable does not come loose as shown in picture #19.
- Attach the Red Power Cable Lead to the Positive Battery Terminal as shown in picture #19. **Do not reinstall the fuse.**
- Attach additional 6" Tie Straps as needed to secure power cable under the hood.
- Remove the Push Clip as shown in picture #20, which will allow space to feed the Red Power Cable Wire under the plastic trim as shown in picture #21. Reinsert Push Clip.



Questions or Comments ? call CFE PRODUCTS @ 610 358 1886 / ASK FOR BOB

PAGE 3

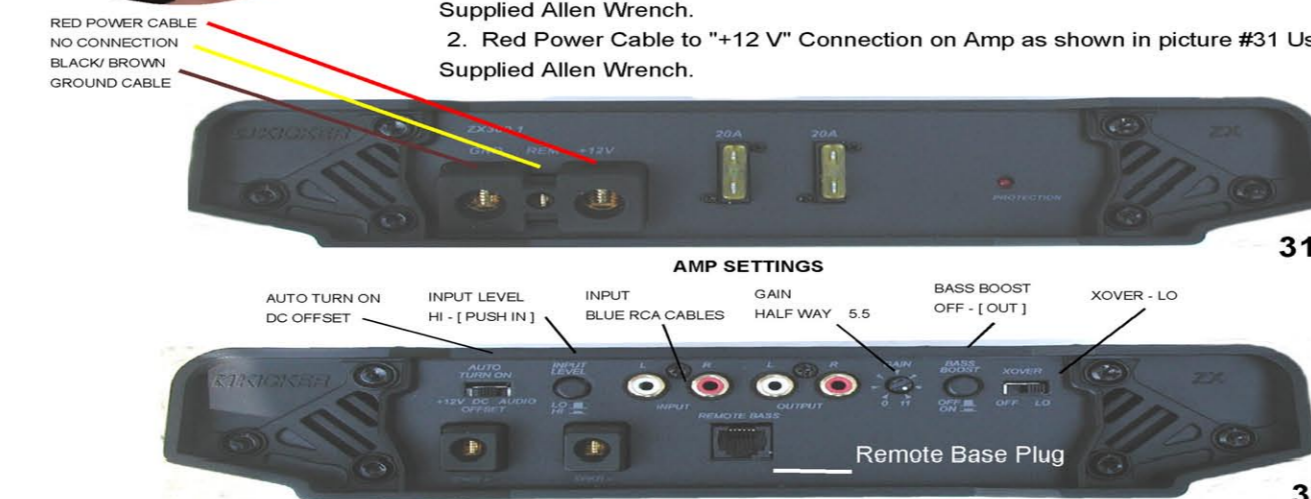


CFE PRODUCTS
JK CUSTOM SUBWOOFER SYSTEM
MODEL #JK-SUB-With factory sub

- Install the two U-Bolts around the roll bar as shown in picture #28. **Important be sure not to grab the seat belts under the U-Bolts. The seatbelts will not work properly if caught under the U-Bolts.**
- Fold seat forward to allow room to install the Mounting Brackets to the U-Bolts as shown in picture #29. Tighten Nuts hand tight.
- Run Wires toward the tailgate of the Jeep to avoid getting caught behind the Subwoofer. Place the Subwoofer in the Jeep and stand it up on it's side as shown in picture #30.



- Attach cables to Amplifier in the following order (Power Side):
 - The Ground Cable to Ground Connection on Amp as shown in picture #31 Using Supplied Allen Wrench.
 - Red Power Cable to "+12 V" Connection on Amp as shown in picture #31 Using Supplied Allen Wrench.



- Attach Cables to Amplifier in the following order (Input Side):
 - Plug in the Base Knob Cable to Remote Base Plug as shown in picture #32
 - The Blue RCA Cables To the Amp Plugs Labeled "INPUT" Red to Red and White to White as shown in picture #32

**ALSO SEE PICTURES 33, 34 & 35 ON PAGE 7

Questions or Comments ? call CFE PRODUCTS @ 610 358 1886 / ASK FOR BOB

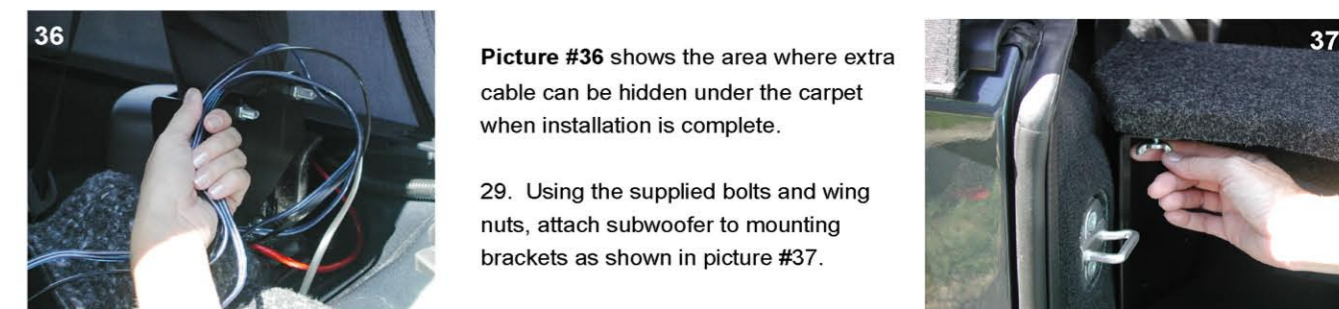
PAGE 5



CFE PRODUCTS
JK CUSTOM SUBWOOFER SYSTEM
MODEL #JK-SUB- With factory sub



- Picture #33 is showing the Power Cable Wire connecting to the "+12V" Terminal and the Brown Ground Cable wire connecting to the "GND" Terminal. (The small REM terminal is not used)
- Picture #34 is showing the Base Knob Plug connecting to the "Remote Base" connection.
- Picture #35 is showing the Blue RCA Cables plugging into the RCA "INPUT" Jacks; Red to Red & White to White. *If you plug these cables into the wrong jack the amp will not work.



- Using the supplied bolts and wing nuts, attach subwoofer to mounting brackets as shown in picture #37.



- Using the supplied 1/2 inch Wire Loom, neaten up the RCA Cable & Remote Base Knob Cables as shown in picture #38 & picture #39.
- After installation is complete, make sure the Subwoofer System is aligned properly so the tailgate closes as shown in picture #40.
- Tighten the Nylock Nuts on the U-Bolts and the 4 Wing Nuts that secure the Subwoofer to the brackets.
- Before going any further, review the "Turn On Checklist" on Page 8.

Questions or Comments ? call CFE PRODUCTS @ 610 358 1886 / ASK FOR BOB

PAGE 6