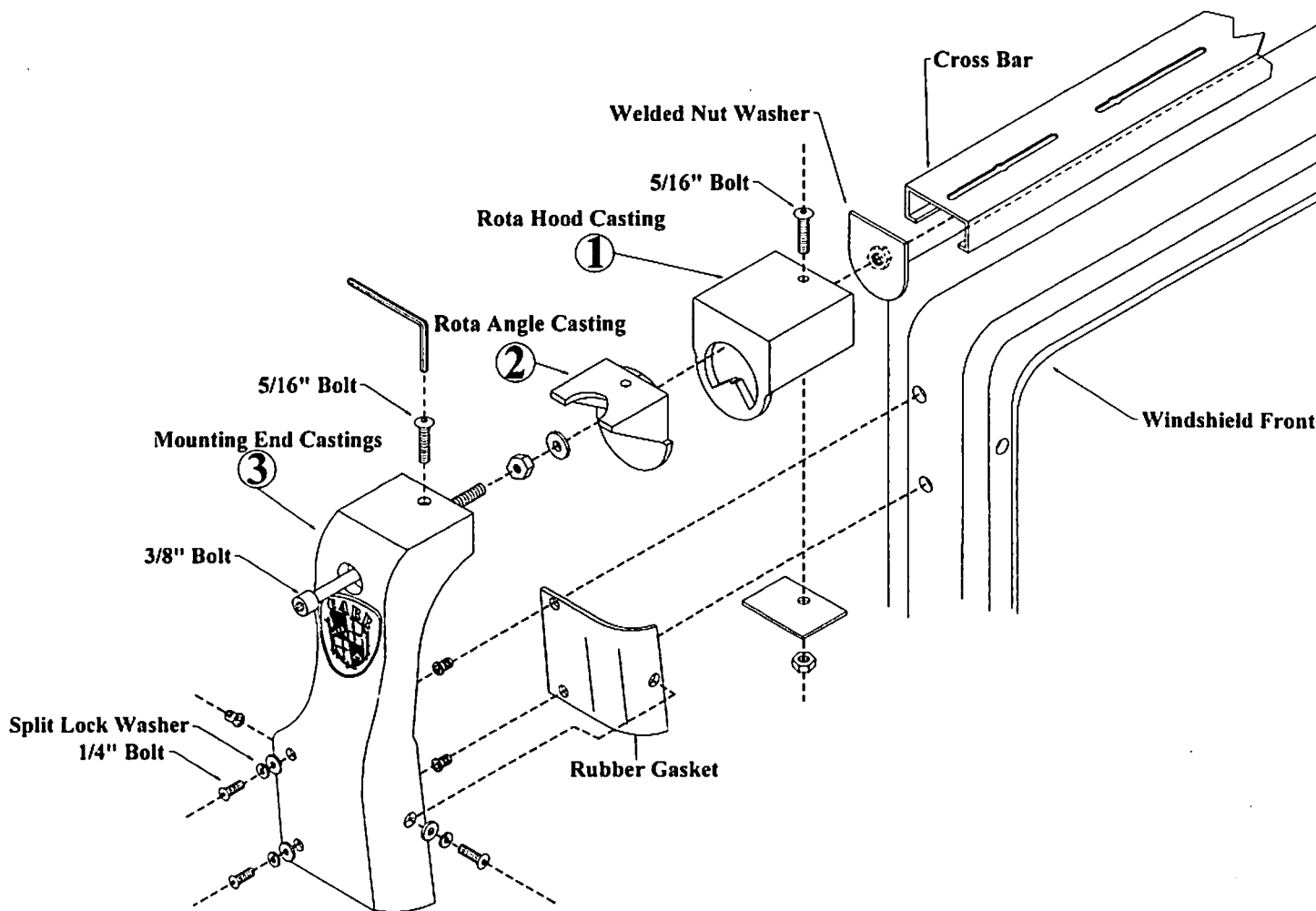


# ROTA LIGHT BAR MOUNTING INSTRUCTIONS

Part No's: 210331, 210332 & 210334



**MATERIALS NEEDED:** Drill motor, 5/16" drill bit, hammer, center punch, 1/2" drill bit, hacksaw.

**MATERIALS FURNISHED:** Two hardware packs, two end castings, four Rota castings, cross bar, instruction page.

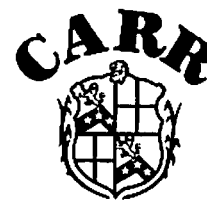
## THIS LIGHT BAR FITS THE FOLLOWING VEHICLES:

**JEEP**

96 - 06 Jeep TJ Wrangler

## **WARNING!**

**THIS CARR LIGHT BAR IS DESIGNED TO HANDLE A TOTAL WEIGHT OF FOUR (4) LBS. ANY ADDITIONAL WEIGHT BEYOND THIS CAPACITY, MAY RESULT IN SERIOUS DAMAGE TO YOUR VEHICLE AND/OR ANOTHER VEHICLE.**



## **Quality and Style that Endures**

Follow the diagram and the written directions carefully for a proper, safe installation.

Should you encounter an unusual, unforeseen problem, contact our Technical Help Line

7:00 AM - 3:00 PM Pacific Time  
(951) 719-1068

Visit our web-site at

[www.CARR.com](http://www.CARR.com)

Carr Pattern Co., Inc.

# ROTA LIGHT BAR MOUNTING INSTRUCTIONS

Part No's: 210331, 210332 & 210334

## WARNINGS!

- ✓ Do not over tighten the nuts and bolts or damage to the castings and or stripping of the threads could result.
- ✓ FOR SAFE AND PROPER USAGE OF THIS PRODUCT, THE MOUNTING INSTRUCTIONS MUST BE FOLLOWED CAREFULLY AND COMPLETELY.
- ✓ The manufacturer and distributor of this product are in no way responsible for the consumer's failure to adhere to the warnings and directions of these instructions in the event of damage to the consumer's vehicle, other properties and or personal injury.
- ✓ DO NOT REMOVE the PVC tape from the light bar until cutting is completed. When cutting black bar leave plastic bag on and wrap a rag around bar before putting into a vise so no scratching of paint will result. Remove the PVC tape from the brackets (does not apply to black brackets). The light bar will not tighten properly unless the bar is straight across the cab.

1. The bar needs to be cut off on each end.
2. Measure 2 1/4" in from each end of the bar and mark a line.
3. Measure from each marked line. Measurement should be approximately 51". If measurement is off, double check the marked line measurements.
4. Clamp the end of the bar into a vice. (Be careful not to scar the light bar).
5. Using a hacksaw, cut carefully along the marked lines. (If a vice is not available, put the bar on a table, secure tightly and cut).
6. Take the long 3/8" socket bolt and screw onto it the 3/8" jam nut all the way to the end of the threads and tighten down.
7. Put the long 3/8" socket bolt through the large hole in the end casting (3). (Check diagram on other side.) Leave the head of the socket bolt extending all the way out of casting (3).
8. Place casting (2) inside of casting (3) and line up the two 5/16" holes.
9. Place a 5/16" Allen head bolt through both castings (2) and (3). Using the 5/16" washer and 5/16" nylon lock nut, securely tighten both castings together. NOTE: the front face of casting (2) should be straight across the face of casting (3), with casting (2) protruding approximately 1/16" beyond casting (3).
10. Place a 3/8" flat washer on the long 3/8" socket bolt; now place the bolt through the other hole in casting (2).
11. With the welded nut facing AWAY from casting (2), put the large washer with the welded nut all the way inside casting (1).
12. Screw the long 3/8" socket bolt all the way onto the washer with the welded nut, and tighten lightly. NOTE: use the 5/16" Allen wrench through the large hole in end casting (3) to loosen and tighten the rotating motion. BE AWARE of the important CAUTION in step 25.
13. Line up the holes in the end casting (3) and the rubber gasket, hold in position on the windshield frame, and mark the two side holes on the windshield frame with a pencil. IMPORTANT: When positioning end casting (3) on the windshield frame, make sure it is up against a flat part of the frame, not a curved section. Also, make sure the end casting (3) will not interfere with opening and closing of the door or the removal of a soft top.
14. Follow the same procedure for the other side. IMPORTANT: To insure that the light bar is level, measure up the exact same distance from the windshield frame hinge to the bottom of the second end casting (3).
15. Center punch the four holes.
16. Take a sharp 5/16" drill bit and drill out the four center punched holes. Then go back and enlarge the four holes to 1/2". WARNING: For best results the 1/2" holes should be drilled to size. DO NOT drill the holes oversize and or oblong. A new 1/2" drill bit will make this task more accurate. AVOID drilling holes at an angle. Avoid forcing or pushing too hard on the drill motor - this could result in an oblong or oversized hole. If you do not think you could drill these holes precisely, consider having the light bar installed by a professional installer. (This warning applies to steps 16 and 17 as well.)
17. Take Timmerman nuts provided and tap them into the holes you have drilled, with the flange flat against the window frame metal.
18. Using the 1/4" tamper-proof Allen head bolts, 1/4" split-lock washers, and 1/4" flat washers, take one end casting (3) with rubber gasket, and mount them to the windshield frame. Securely tighten with Allen wrench provided. Repeat for other casting (3).
19. With both castings securely mounted to the windshield frame, drill the 5/16" holes through the front of the frame, using the holes in the castings as a guide. Then remove both castings.
20. Drill out the two 5/16" holes to 1/2". Tap in two Timmerman nuts.
21. Re-mount both end castings with the hardware provided. Tighten the two sets of outside bolts first, then the two front bolts. Securely tighten all bolts.
22. Remove any excess rubber gasket for a cleaner appearance.
23. Remove PVC tape or plastic bag from light bar. Place bar underneath castings (1) and push into place. Be sure bar is centered.
24. Put a 5/16" Allen head bolt through top of each casting (1) from the top down.
25. Place large rectangular washers inside of bar. Under each casting (1), with bolts from step 21 passing through them. (Important: be sure that the rectangular washers are completely underneath end castings.)
26. With rectangular washers in place, take nylon lock nuts and Allen wrench provided, and securely tighten light bar to end castings (3).
27. The Rota light bar mounting bolts that attach to the windshield frame should be checked periodically and tightened if necessary.
28. CAUTION: when lights are installed on your bar, and you want to rotate them down, be very careful not to loosen the bar too much, as the weight of the lights could cause them to crash against the vehicle and cause damage to both the vehicle and the lights. Also, DO NOT LOSE YOUR ALLEN WRENCHES.
29. Check again and securely tighten ALL hardware.
30. After one month of use, go back and give all hardware a final tightening.
31. To maintain luster of polished areas use an aluminum polish on a regular basis.

## Carr Pattern Co., Inc. Warranty Policy

### Finishes: Lifetime

### Structural Warranty: Lifetime

### Warranty Conditions:

- a. All warranties start from consumer's date of purchase
- b. A new product will be sent out immediately to replace a warranty claim.

### Warranty Limitations:

- a. Warranty coverage extends ONLY to repair or replacement of the CARR product. This warranty does not cover the cost of labor, transportation, installation or removal of the product.
- b. Warranty coverage does not extend to damage caused by collision, fire, theft, freezing, vandalism, riot, explosion or object striking the product, or misuse of the product and/or the vehicle on which the product is being installed.
- c. Warranty coverage does not extend to damage caused by airborne fallout (chemicals, tree sap, etc.), stones, hail, earthquake, water or flood, windstorm, and lightning, the application of chemicals or sealants subsequent to manufacture.
- d. Warranty coverage does not extend to damages caused by abuse, modification or improper installation of the product.
- e. Warranty coverage does not extend to any economic loss or extra expense including (without limitation), payment for the loss of time or pay, inconvenience, storage, loss of vehicle use, vehicle rental expense, equipment rental expense, lodging, meals, or other travel costs.

### Other Terms:

- a. This warranty gives you specific legal rights and you may also have other rights that vary from state to state. CARR does not authorize any person to create for it any other obligation or liability in connection with its products. ANY IMPLIED WARRANTY OF MERCHANTABILITY OR FITNESS FOR A PARTICULAR PURPOSE APPLICABLE TO THIS PRODUCT IS LIMITED IN DURATION TO THE DURATION OF THIS WRITTEN WARRANTY. PERFORMANCE OF REPAIRS AND NEEDED ADJUSTMENTS IS THE EXCLUSIVE REMEDY UNDER THIS WRITTEN WARRANTY OR ANY IMPLIED WARRANTY. CARR SHALL NOT BE LIABLE FOR INCIDENTAL OR CONSEQUENTIAL DAMAGES RESULTING FROM BREACH OF THIS WRITTEN WARRANTY.\*
- b. \*Some states do not allow limitations on how long an implied warranty will last or the exclusion or limitation of incidental or consequential damages, so that above limitations or exclusions may not apply to you.
- c. GUARANTEE: Every attempt has been made to manufacture and distribute the finest quality products available. Our manufactured products are guaranteed to be free of defects due to workmanship or materials. Distributed products are subject to manufacturer's warranty only.