



INSTALLATION INSTRUCTIONS

DRAWERS #173

Please read and fill out the enclosed warranty registration card to activate your warranty.

SHIPMENT CONTENTS



#3 Lid

#4 Rear

#9 Left side

#8 Right side

#7 (2) Trays

#11 (2) Clamps

10.21 (2) 2 1/4" Seal

#10.20 (2) 4 1/8" Seal

#10.19 (2) 4 7/16" Seal

#10.15 Seal 38 7/8"

#10.14 Edge seal 38 1/8"

#10.22 Rubber seal

HARDWARE PACKAGE



#10.12 (4) 3/8 x 5/8" Bolts

#10.16 (4) 3/8 x 1 3/4" Bolts

#10.7 (3) 10-32x1" Screw

#10.10 (4) 10-32x1/2" Screw

#10.11 (4) 10-32x3/4" Knob Screw

#10.9 (4) 10-32 Nut

#10.6 (3) 10-32 Rubber Well Nut

#10.13 (4) 3/8" Fender Washers

#10.17 (8) 3/8" Washers

#10.8 (7) #10 Washer

#10.18 (4) Rubber spacer

TOOLS REQUIRED

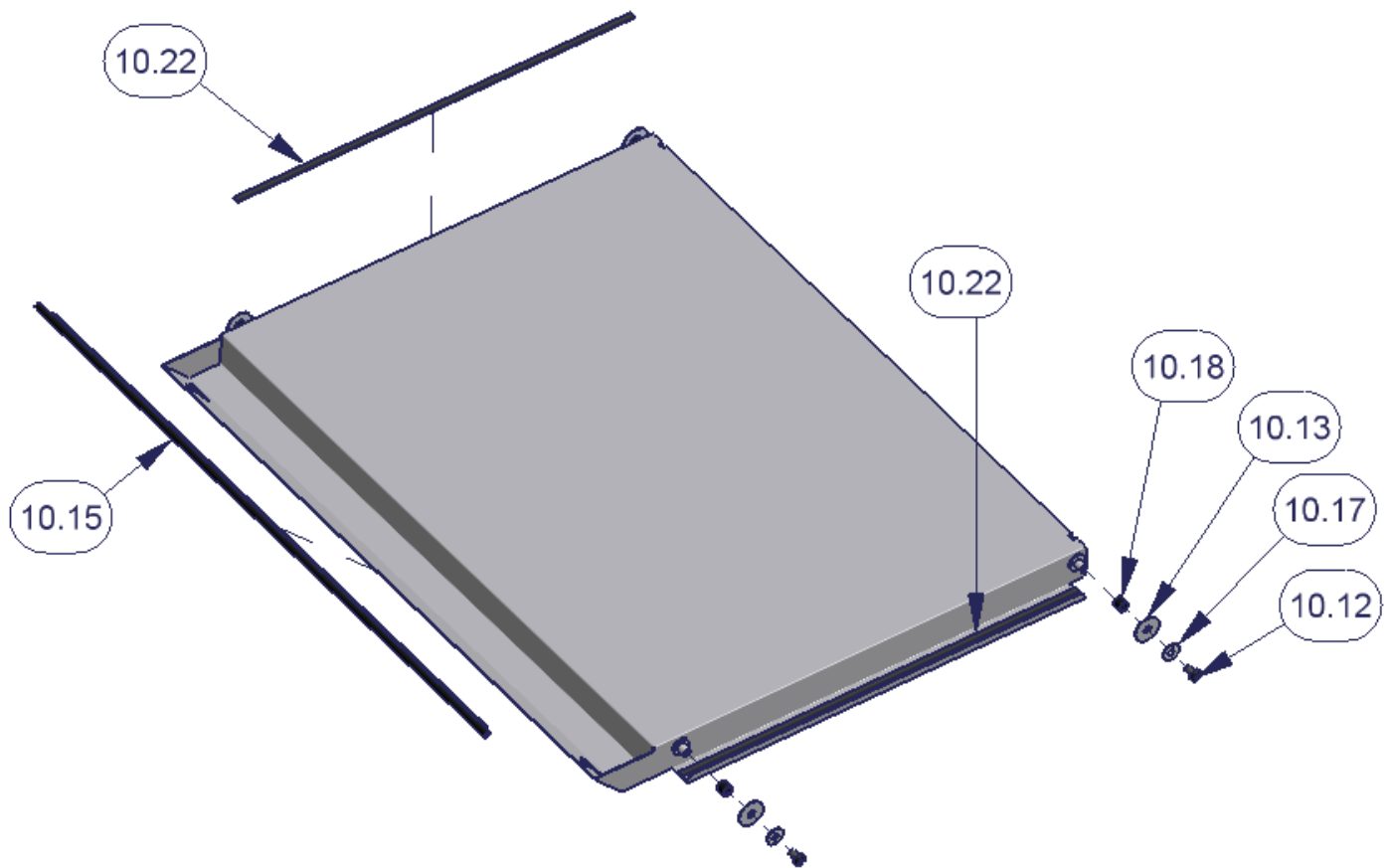
- All applications: Ratchet, 10MM Socket, 5/16" socket or wrench, 3/8" socket or wrench, 1/8" Allen wrench, 7/32" Allen wrench and a utility knife.
- Vehicles with subwoofer: 15MM Socket
- 4 door model - 18 MM Socket or wrench, 2 door model - 9/16" Socket

INSTALLATION

PLEASE READ ALL SAFETY WARNINGS AND INSTRUCTIONS THOROUGHLY BEFORE STARTING INSTALL

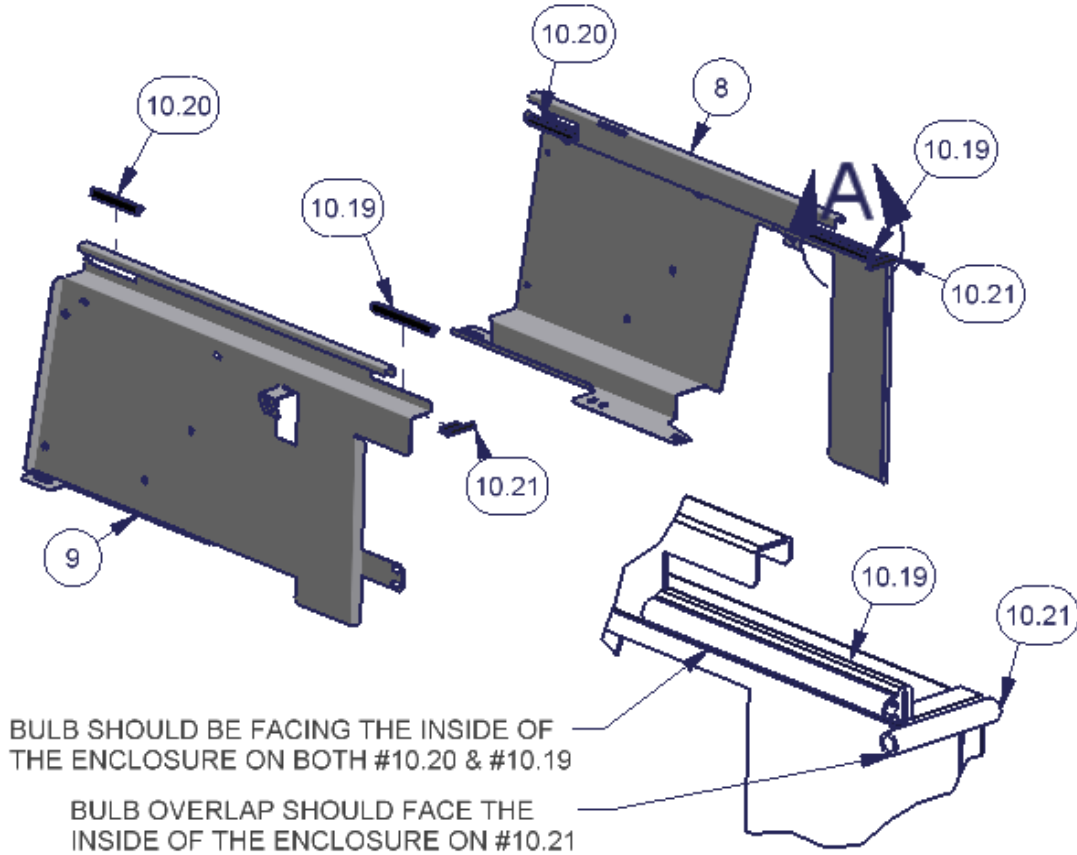
1. Install the pre-cut trim seal #10.15 on the front edge of the lid as illustrated. (See Figure 1)
2. Install the lid hardware on all (4) welded studs by sliding #10.18 rubber spacers on first then #10.13 fender washer, 10.17 washer and #10.12 Bolt. (See Figure 1)
3. Cut and install the #10.22 rubber seal on #3 Lid in the center of the flange as illustrated. (See Figure 1)

Figure 1



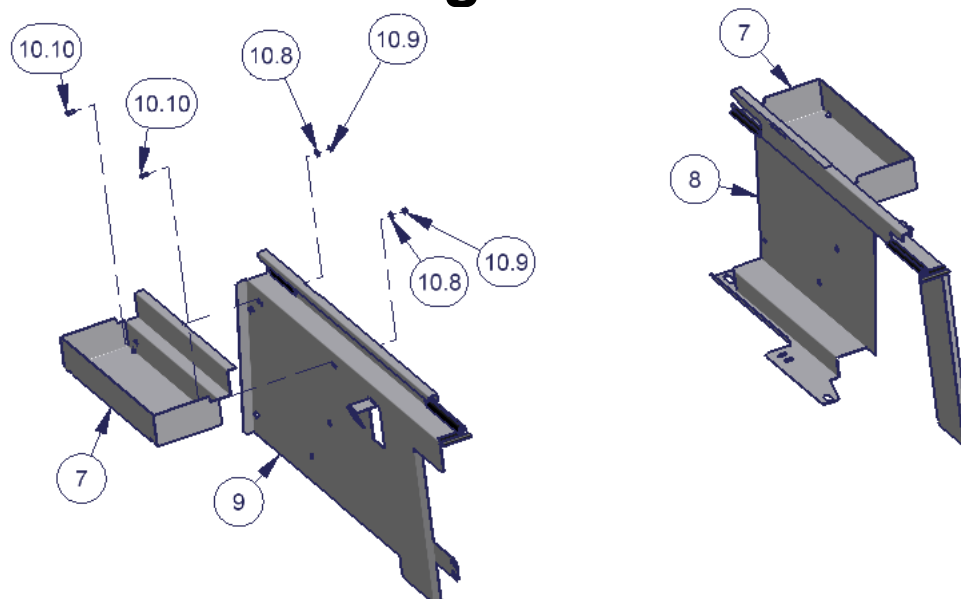
4. Install the pre-cut trim seal #10.20 and #10.19 on both sides #8 and #9 as illustrated with the bulb facing the inside of the enclosure assembly. (See Figure 2)
5. Install the pre-cut trim seal # 10.21 on both sides #8 and #9 with the bulb overlap protruding toward the inside of the enclosure assembly. (See Figure 2)

Figure 2



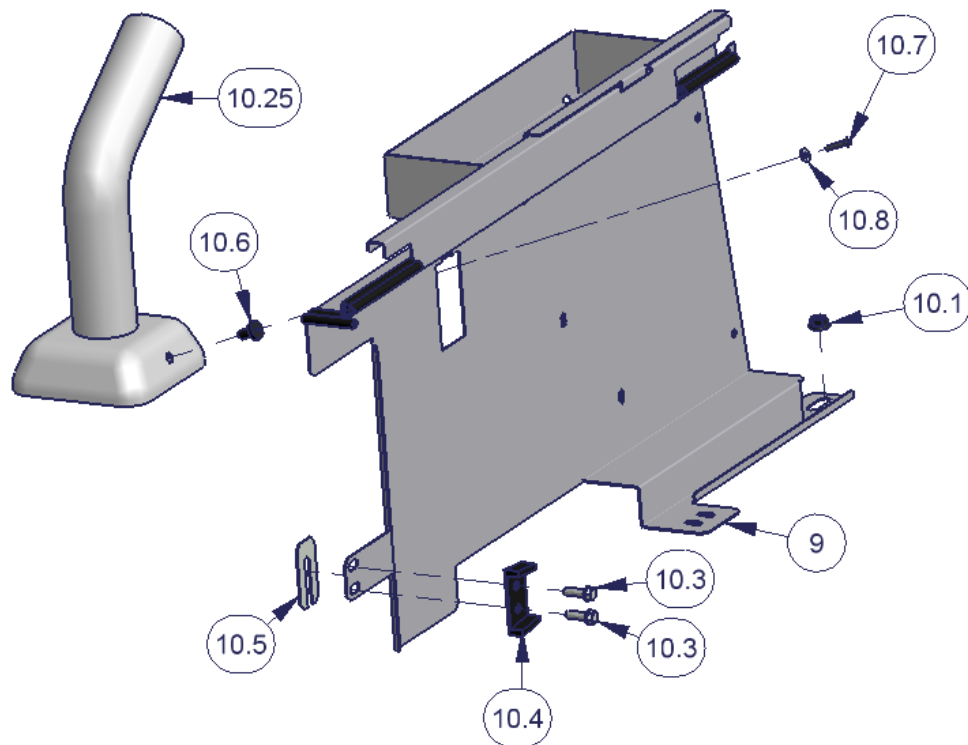
6. Install the #7 trays to both sides #8 and #9 using the illustrated hardware. (See Figure 3)

Figure 3



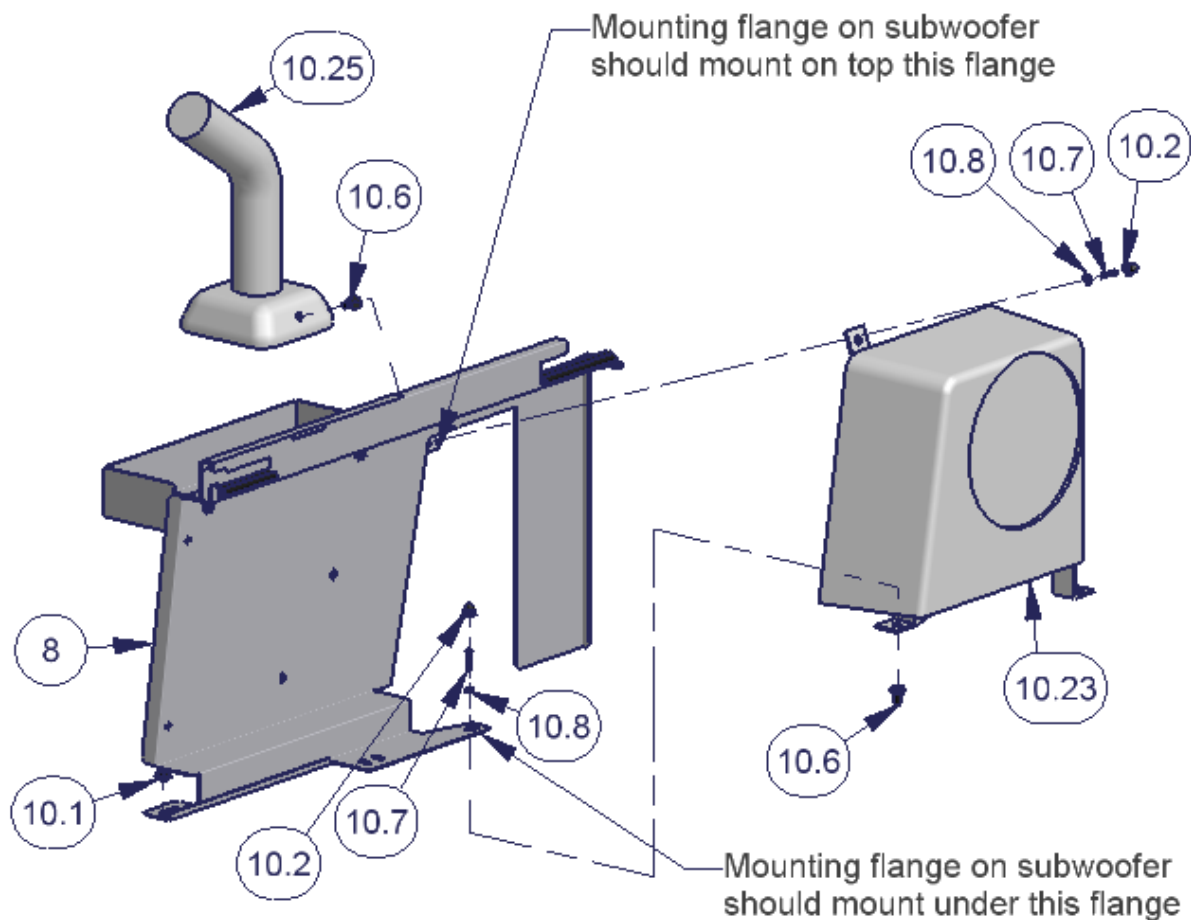
7. **All models with subwoofer only** - If the vehicle is equipped with the original factory subwoofer unfasten the OEM factory front mounting nut attaching it to the floor and also unfasten the top nut attaching it to the base of the roll bar. (#10.2 Figure 5 shows the location when reinstalling this hardware) Save this hardware you will reuse it.
8. Unfasten the two original screws #10.3 holding the factory rear door alignment guide #10.4 and spacer #10.5 which are mounted by the Jeep rear door latch. Save this hardware you will reuse it. (Figure 4 shows the location when reinstalling this hardware)
9. **2-door models only** - Remove rear seat in 2-door models.
10. **4-door models only** - Unfasten the two rear original factory nuts #10.1 on the rear seat mounting brackets. The two front nuts do not need to be removed. Save this hardware you will reuse it. (See Figure 4 & 5 shows the location when reinstalling this hardware)
11. Install the left side panel #9 by pressing the well nut #10.6 into the hex shaped hole that is located under the carpet at the base of the roll bar mount #10.25. The carpet will need to be cut. Then fasten using bolt #10.7 and washer #10.8. (See Figure 4)
12. Fasten the left side panel #9 to the original door alignment mounting points. The door alignment spacer #10.5 should be first then the left side panel #9 with the door alignment block #10.4 next and fasten all with the original mounting hardware #10.3. Align the bracket by not fully tightening the screws then shutting the rear door to align the bracket then fully tighten and check the door operation. (See Figure 4)
13. **4-door models only** - Fasten the front of the left side panel #9 to the studs on top of the original seat mounting bracket using the original nuts #10.1. (See Figure 4)

Figure 4



14. **All models without subwoofer** - Install the right side panel #8 by pressing a well nut #10.6 into the hex shaped hole that is located under the carpet at the base of the roll bar mount #10.25. Also, remove the rubber plug and press a well nut #10.6 into the hex shaped hole that is located under the carpet on the floor. The carpet will need to be cut. Then fasten the right side panel #8 to both of these well nuts using bolts #10.7 and washers #10.8. (See Figure 5)
15. **All models with subwoofer** – Position the original subwoofer #10.23 so the bottom front mounting flange is under the bottom flange on the right side panel #8. Position the top mounting flange on the subwoofer #10.23 on top of the side flange on the right side panel #8. Then fasten using the original nuts #10.2. (See Figure 5)
16. **4-door models only** - Fasten the front of the right side panel #9 to the studs on top of the original seat mounting bracket using the original nuts #10.1. (See Figure 5)

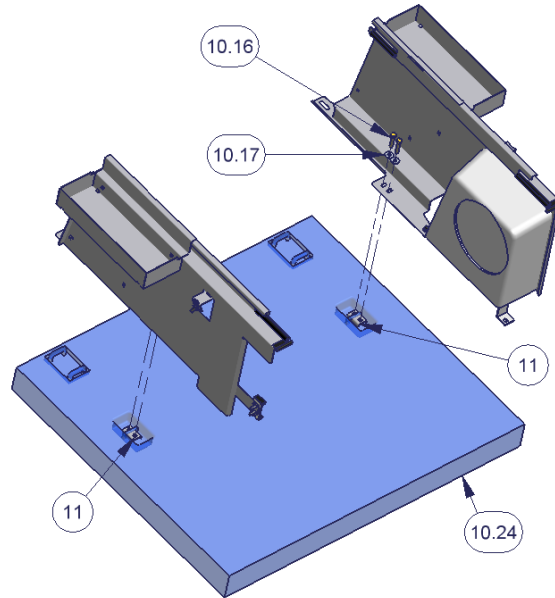
Figure 5



For 2 door mounting applications do these steps. (4 door mounting applications skip past this section)

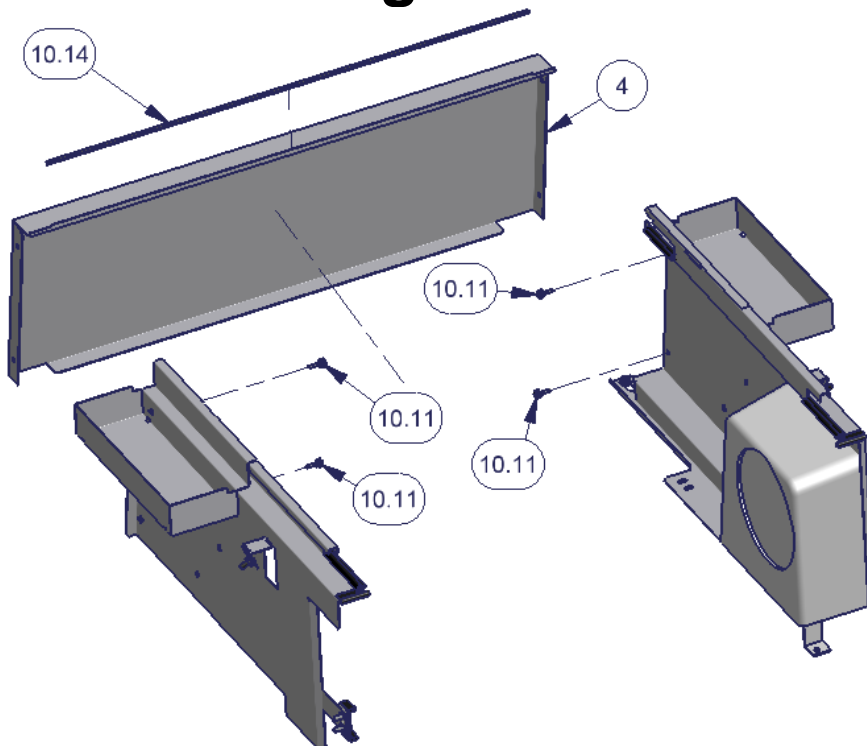
17. Slide each of the (2) Clamp brackets #11 under the (2) rear seat catch brackets inset into the floor. (See Figure 6)
18. Fasten both the Left #9 and Right #8 Side Panels to the (2) Clamp brackets #11 using #10.16 Bolts and #10.17 Washers. Be sure to tighten each bolt a little at a time to keep the pressure on the bracket even. Be careful not to over tighten. (See Figure 6)

Figure 6



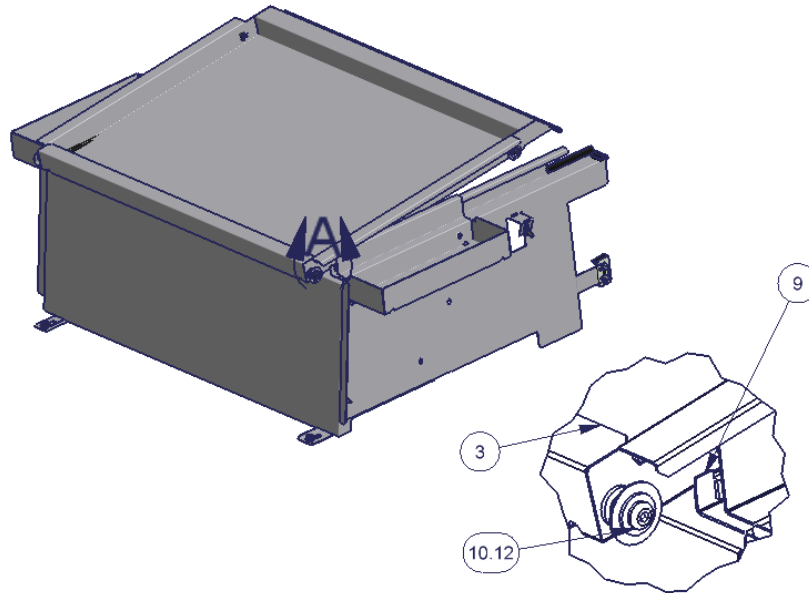
19. Install the precut #10.14 edge seal on the top flange of Rear Panel #4. (See Figure 7)
20. Fasten the #4 Rear Panel to the front of #9 left and #8 right side panels using the #10.11 knob screws. (See Figure 7)

Figure 7



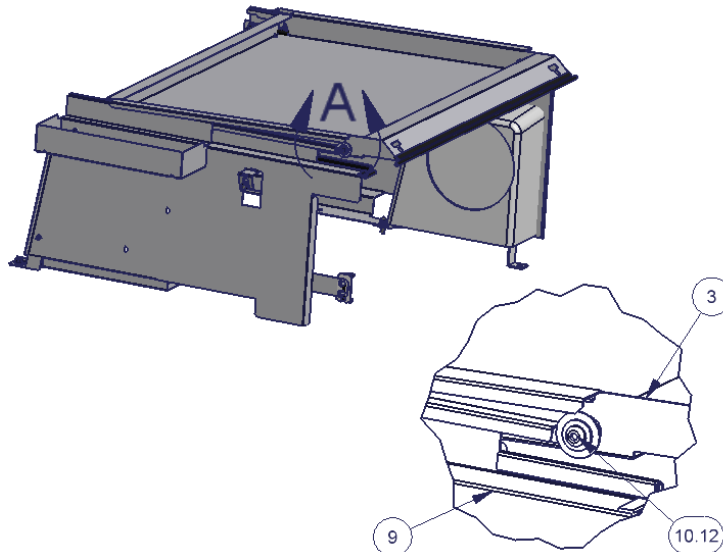
21. Install the lid #3 by placing it on the enclosure assembly so the welded studs with bolts #10.12 are overlapping the enclosure toward the front of the vehicle. The end of the lid #3 with the Tuffy logo should face the rear of the vehicle. Then pull the lid assembly toward the rear of the vehicle till it stops while guiding the welded studs into the slots on the side panels #8 and #9. (See Figure 8)

Figure 8



22. Close the lid #3. The welded studs on the lid #3 with bolts #10.12 located toward the rear of the vehicle should now overlap the end of the side panels. Push the lid toward the front of the vehicle till it stops while guiding the welded studs into the slots on the side panels #8 and #9. When the rear vehicle door is shut it prevents the lid from being pulled toward the rear releasing it from the slots. When the rear vehicle door is locked so is the Tuffy enclosure. (See Figure 9)

Figure 9



23. Check the seal between the vehicle rear door and the lid. Close the top rear window and check the clearance with the lid. Loosen the mounting hardware and maneuver the enclosure so there is a good seal and clearance between the top rear window if necessary.

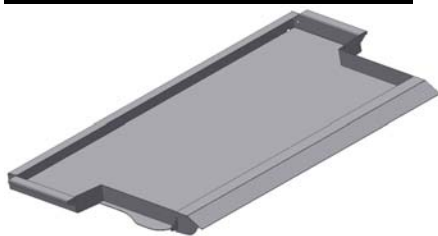
Call (970) 564-1762 for Technical Support

INSTALLATION INSTRUCTIONS

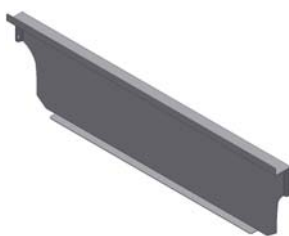
DECK ENCLOSURE #275

Please read and fill out the enclosed warranty registration card to activate your warranty.

SHIPMENT CONTENTS



#1 Lid



#4 Front Panel



#9 Top Mount



#10 Large Bracket



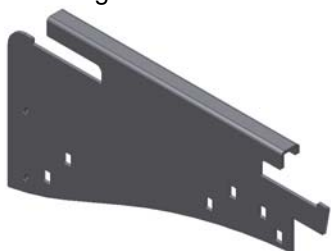
#11 Small Bracket



#5 Left Mounting Panel



#7 Left Filler Bracket



#6 Right Mounting Panel



#8 Right Filler Bracket

HARDWARE PACKAGE



#15.1 (4) 1/2-20 X 1/2" Knob Screw



#15.26 (4) 8MM x 35mm Bolt



#15.25 (10) 5/16 x 1" Bolt



#15.19 (12) 5/16 x 3/4" Carriage Bolt



#15.18 (36) 5/16 Washer



#15.21 (22) 5/16 Locknuts



#15.24 (4) 8mm Rec nuts

TOOLS REQUIRED

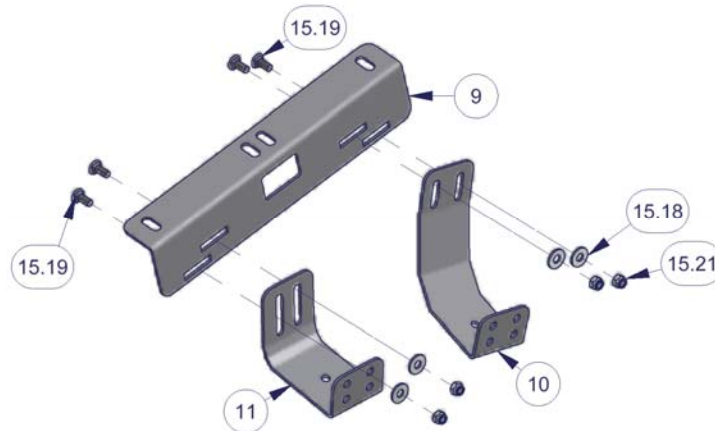
- 1/2" Socket, ratchet & wrench
- T-40 Torx (For vehicles with an existing hardtop)
- 13mm Socket (For vehicles without an existing hardtop)
- Optional Security step – Drill and 3/8" bit

INSTALLATION

PLEASE READ ALL SAFETY WARNINGS AND INSTRUCTIONS THOROUGHLY BEFORE STARTING INSTALL

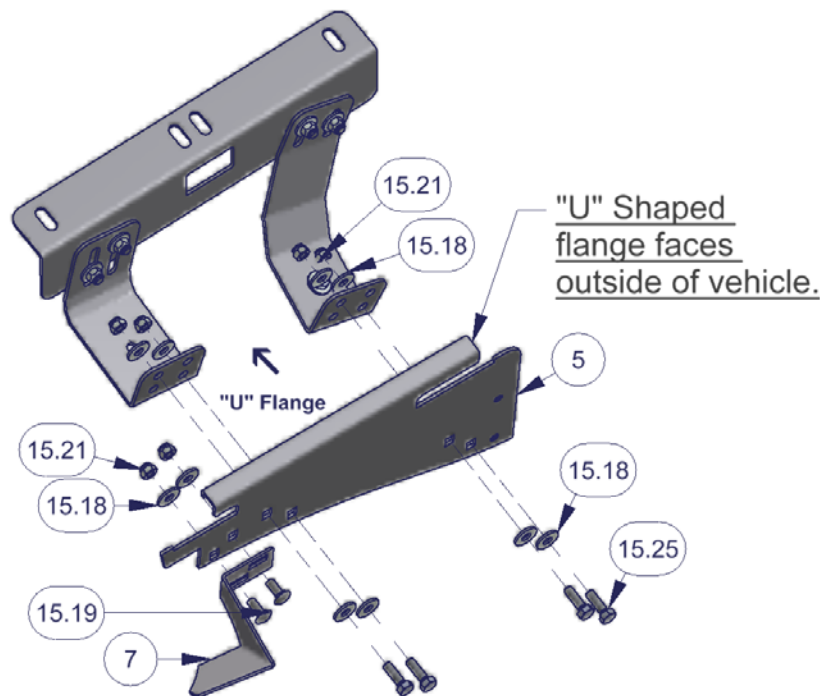
- Assemble the left/drivers side mounting assembly. Do not fully tighten the hardware, leave them loose enough for adjustment.
- Fasten #9 Top Mount to the #10 Large and #11 Small brackets using (4) #15.19 Carriage bolts, (4) #15.18 Washers and (4) #15.21 nuts as illustrated. Leave hardware slightly loose. (See Figure 1)

Figure 1 (Left/drivers side assembly)



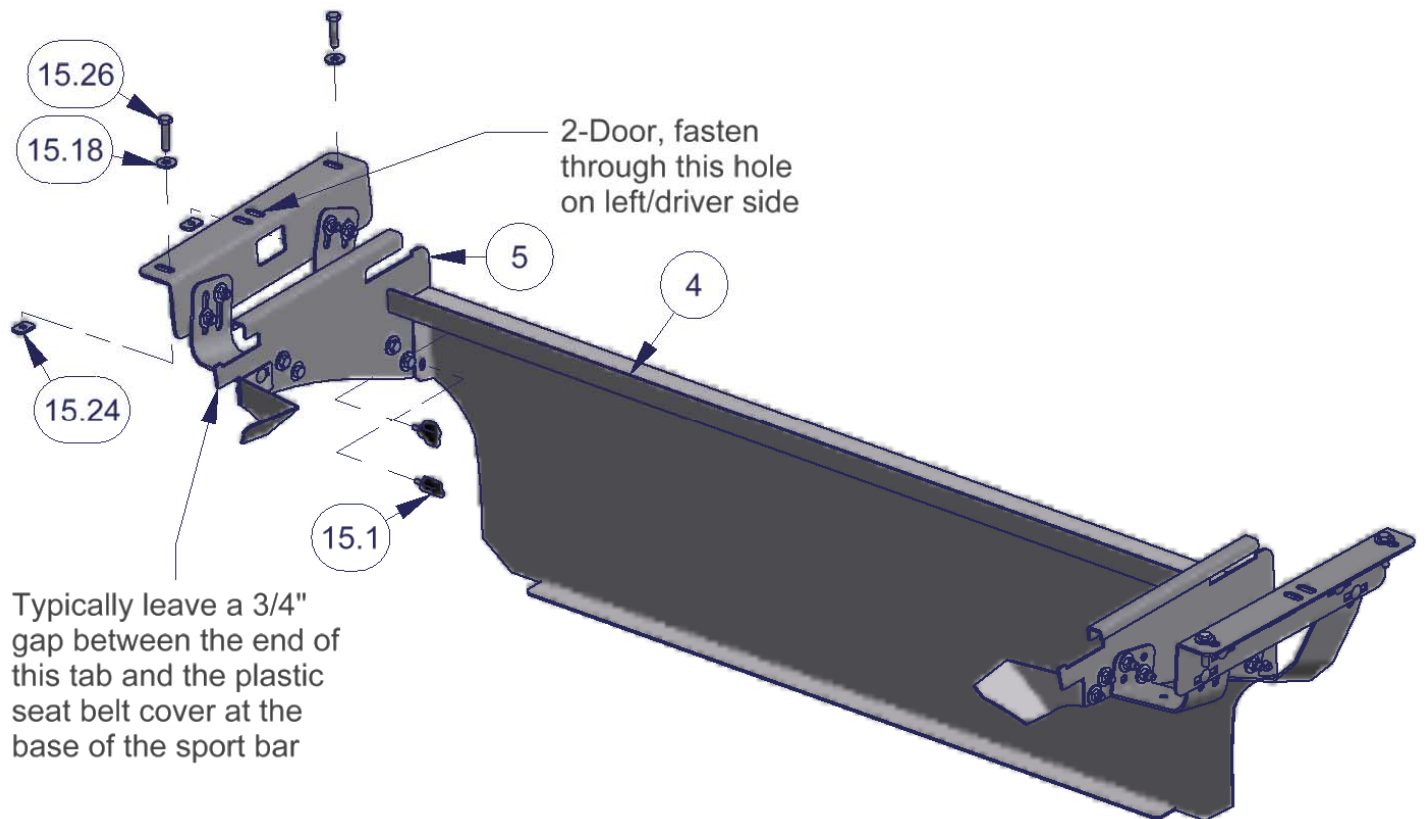
- Fasten #5 Left Mounting Panel to the left/drivers side assembly using (4) #15.25 Bolts, (8) #15.18 Washers and (4) #15.21 nuts as illustrated. Leave hardware slightly loose. Important! The left and right panel look similar but the "U" shaped bend is opposite and should face the outside of the vehicle. (See Figure 2)
- Fasten #7 Left Filler Panel to #5 Left Mounting Panel using (2) #15.19 Carriage bolts, (2) #15.18 Washers and (2) #15.21 nuts as illustrated. Leave hardware slightly loose. (See Figure 2)
- Assemble the right/passenger side mounting assembly with the same hardware but mirrored/opposite of the left side. Do not fully tighten the hardware, leave them loose enough for adjustment.

Figure 2 (Left/drivers side assembly)



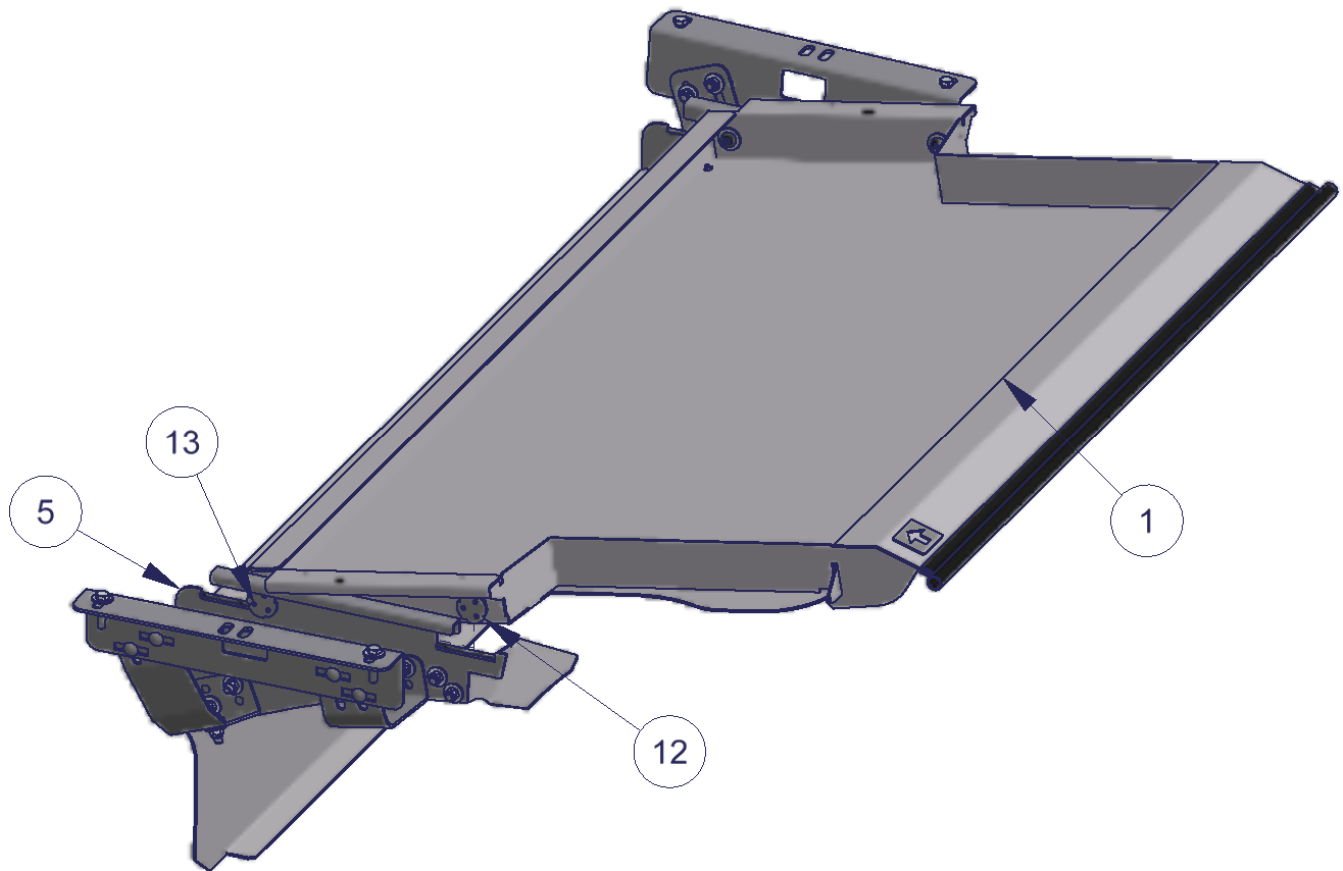
- Fasten the left/driver and right/passenger mounting assemblies to the vehicle by following the applicable vehicle specific instructions below. While tightening the hardware make sure the #9 bracket is adjusted toward the outside of the vehicle as much as possible.
 - 4-door with an existing hardtop - If the vehicle has a hard top remove the (2) factory OEM torx bolts then refasten the #9 top mounting brackets on top of the flange on the hardtop to the existing (2) holes using the original OEM hardware as illustrated. (The 8mm x 35mm bolts included and 5/16" washers can be substituted if desired) (See Figure 3)
 - 4-door without an existing hardtop - Fasten the #9 top mounting brackets to the flange on the top of the vehicle body through the existing holes using #15.26 Bolts, #15.18 Washers and #15.24 Nuts as illustrated. (See Figure 3)
 - 2-door with an existing hardtop - If the vehicle has a hard top remove the factory OEM torx bolt then refasten the #9 top mounting brackets on top of the flange on the hardtop to the existing hole using the original OEM bolt through the indicated hole on #9 top mounting bracket. (The 8mm x 35mm bolts included and 5/16" washers can be substituted if desired) (See Figure 3)
 - 2-door without an existing hardtop - Fasten the #9 top mounting brackets through the hole illustrated to the flange on the top of the vehicle body using #15.26 Bolts, #15.18 Washers and #15.24 Nuts as illustrated. (See Figure 3)
- Fasten the #4 Front Panel to the mounting assemblies using the (4) #15.1 Knob Screws. (See Figure 3)
- With the fasteners on the left & right mounting assemblies still slightly loose adjust all the component brackets and mounting panels so that they are flush with the vehicle tub. Also adjust the mounting panels so the tab toward the rear of the panel has about a 3/4" gap between it and the plastic seat belt cover at the base of the sport bar as illustrated. This gap size varies, 3/4" is typical, but adjustment may be necessary upon final fit check. Then tighten all hardware on both the left and right mounting assemblies. (See Figure 3)

Figure 3



- Install the #1 Lid by maneuvering it above the left and right mounting assemblies in the vehicle. Then pull the #1 lid toward the rear of the vehicle until it stops while guiding the welded studs #13 into the slots in the #5 Left and #6 Right Mounting Panels. Initially this will be tight but will loosen up after a break in period. Drop the lid closed then push the #1 lid toward the front of the vehicle until it stops while guiding the welded studs #12 into the slots. (See Figure 4)
- Inspect that the #12 welded studs are bottomed out with the #1 Lid as far forward as it can go. Close/secure the rear window then close the rear tailgate. If the tailgate is difficult to fully close or there is a gap between the tailgate and the #1 lid loosen the fasteners on the left and right mounting bracket assemblies and adjust them as required then refasten them and recheck. (See Figure 1, 2 & 4)

Figure 4



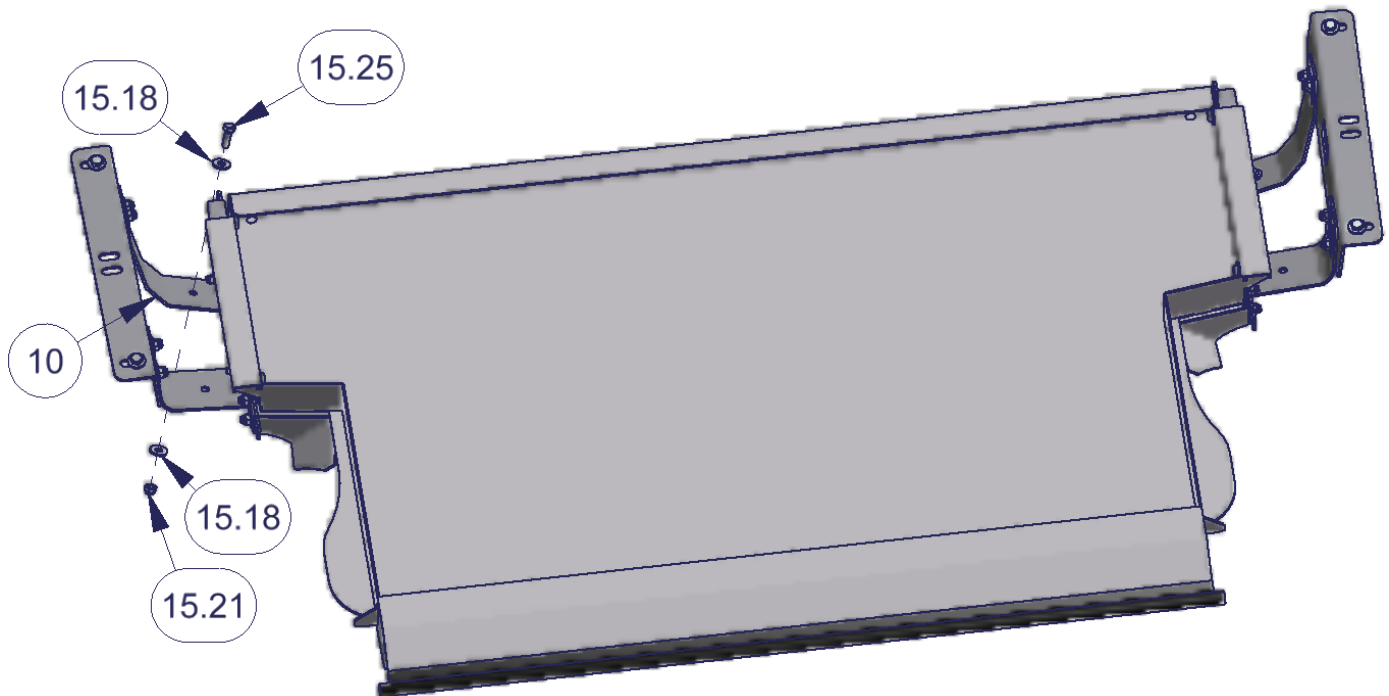
OPTIONAL SECURITY FASTENER STEPS

- After all adjustments and checks have been made the optional security fasteners can be added if desired. Remove both the OEM inside wheel liners under the tub.

WARNING! - Make sure that there is nothing under the vehicle that will be damaged by the drill bit when drilling. The exhaust is located in that area, be cautious not to touch it when hot.

- Mark the tub under the center hole in the #10 Large bracket (or #11 Small bracket if desired) on both wheel wells and drill a 3/8" hole in each. It is recommended to use silicone sealant on any drilled holes to prevent rusting. (See Figure 5)
- Secure brackets to the vehicle using #15.25 bolts, #15.18 Washers and #15.21 nuts through each hole drilled. (See Figure 5)
- Reattach OEM inside wheel liners under tub.

Figure 5



2-DOOR REAR SEAT STORAGE INSTRUCTIONS

The rear seat can be stored, folded and tumbled in 2-door models, with the deck enclosure installed, with some limitations and adjustments.

LIMITATIONS: With the rear seat tipped forward the front seats will only recline to approximately 17 degrees when they are positioned in the extreme rear setting. (This may end up too upright for tall people)

INSTRUCTIONS: Fold and tumble the rear seat. Unlatch the rear seat from both connection points on the left and right side. Then re-latch the rear seat to only the front connection points on the left and right side. This tips the seat forward enough to clear the deck enclosure when installed. The headrests can also be removed if more room is necessary but this is typically not required.

IMPORTANT! Don't forget to re-latch the rear seat to both connection points when use is desired again.

Call (970) 564-1762 for Technical Support