

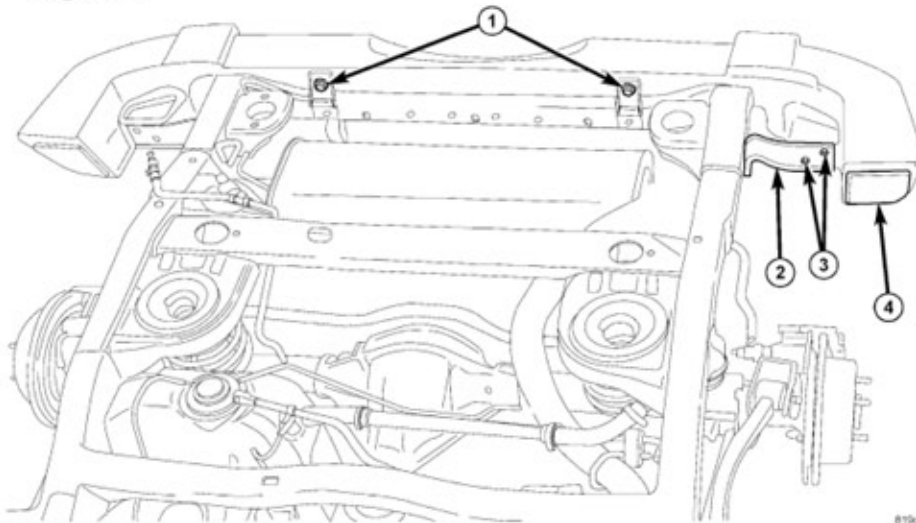
Version 1

GENERAL NOTES:

- These instructions are also available on our website; www.polyperformance.com. Check the website before you begin for any updated instructions and additional photos for your reference.
- The Polyperformance JK rear bumper system is a bolt on installation; it does not require drilling two holes on driver side frame rail.

1. Remove the spare tire and mount if you are installing the Poly Performance spare tire swing out.
2. Remove the stock rear bumper, retain the stock side mounting bolts, the 4 bolts will be reused. See Figure 1

Figure 1



3. Remove the stock tow hook from the passenger side frame rail if equipped.
4. If equipped with a stock receiver hitch, it can remain installed or it can be removed for installation of the optional license plate skid plate.
5. Remove the stock license plate and mounting bracket from the tub. The new bumper relocates the license plate and includes two new license plate lights.
6. When removing the stock license plate mount, locate the wire for the license plate light. The wire will need to be lengthened and spliced into the new license plate lights prior to installing in the bumper.
7. With all the stock bumper components removed, locate the two holes on the bottom of the passenger side frame rail that once held the tow hook in place. You will need to drill holes in the driver side frame rail identical to the ones in the passenger side. Measure the hole locations on the passenger side and transfer the hole locations to the bottom of the driver side frame rail.
8. With the hole locations marked, drill the two holes with at least a 1/2" drill bit; a slightly larger bit may be used to get the correct alignment. Do not exceed 5/8" hole size.

9. Install the bumper mounting plates into each side of the frame rail as pictured in Figure 2 and 3.

Figure 2

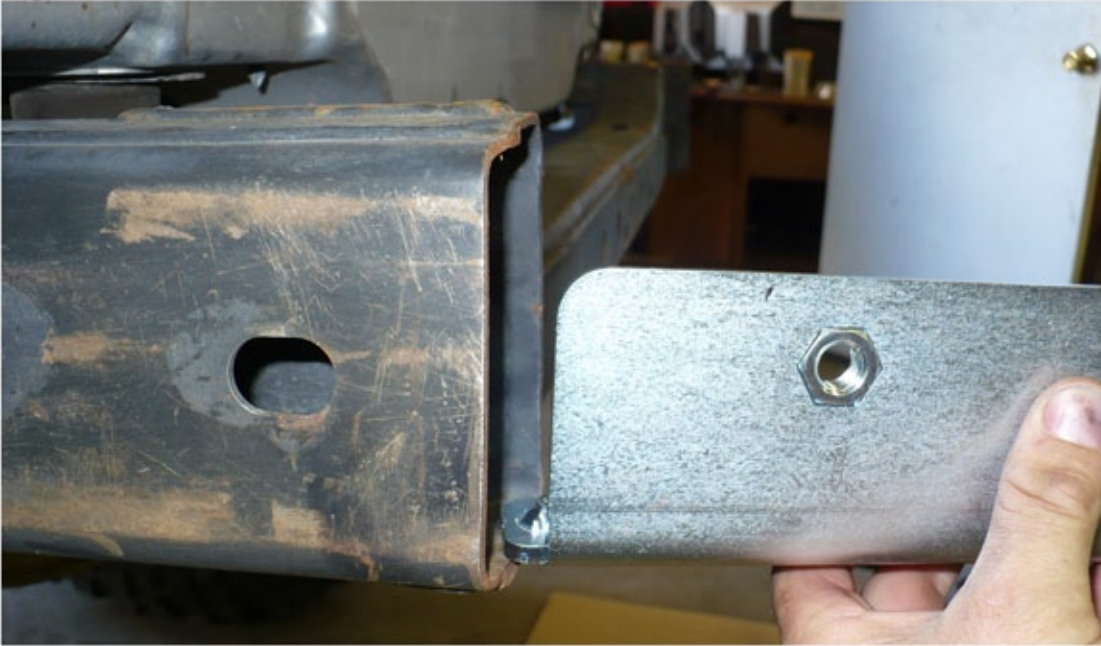


Figure 3



10. Line up the bracket holes with the holes in the frame.
11. Install the license plate with the four 1/4" screws, push the new license plate lights into the bumper as orientated in Figure 4.

Figure 4



11. Now would be a good time to get the license plate light wiring figured out. You may need to add a few feet of wire to the stock light wire and string the wire through the bottom of the tub to the center of the rear frame crossmember. You can get the new lights wired together and ready to plug in when the bumper is on the ground. This will make them easier to hook up when the bumper is lifted in place.
12. With assistance, lift the new bumper into place. Plug in the license plate lights. Install the supplied 1/2" x 1" bolts and washers through the bumper into the bumper mounting brackets. There are 4 bolts and washers per side. Install the two stock bumper mounting bolts onto either side of the bumper mount. Pictured in Figure 5

Figure 5



13. Check the alignment of the bumper with the back tailgate. Adjust it as needed, so bumper is in line with the tailgate. Torque the eight 1/2" bolts to 80 ft-lbs and the four factory bolts to 30 ft-lbs.
14. If you are not using a factory installed hitch you can now install the license plate skid plate to the center of the bumper.
15. Place the skid plate up to the bumper as shown in Figure 6. Insert the 1/2" x 4.5 long bolts and washer combo through the back of the skid plate. Torque the bolts to 50 ft-lbs

Figure 6



The next section describes how to install the optional spare tire carrier PPM-5310-02-BK

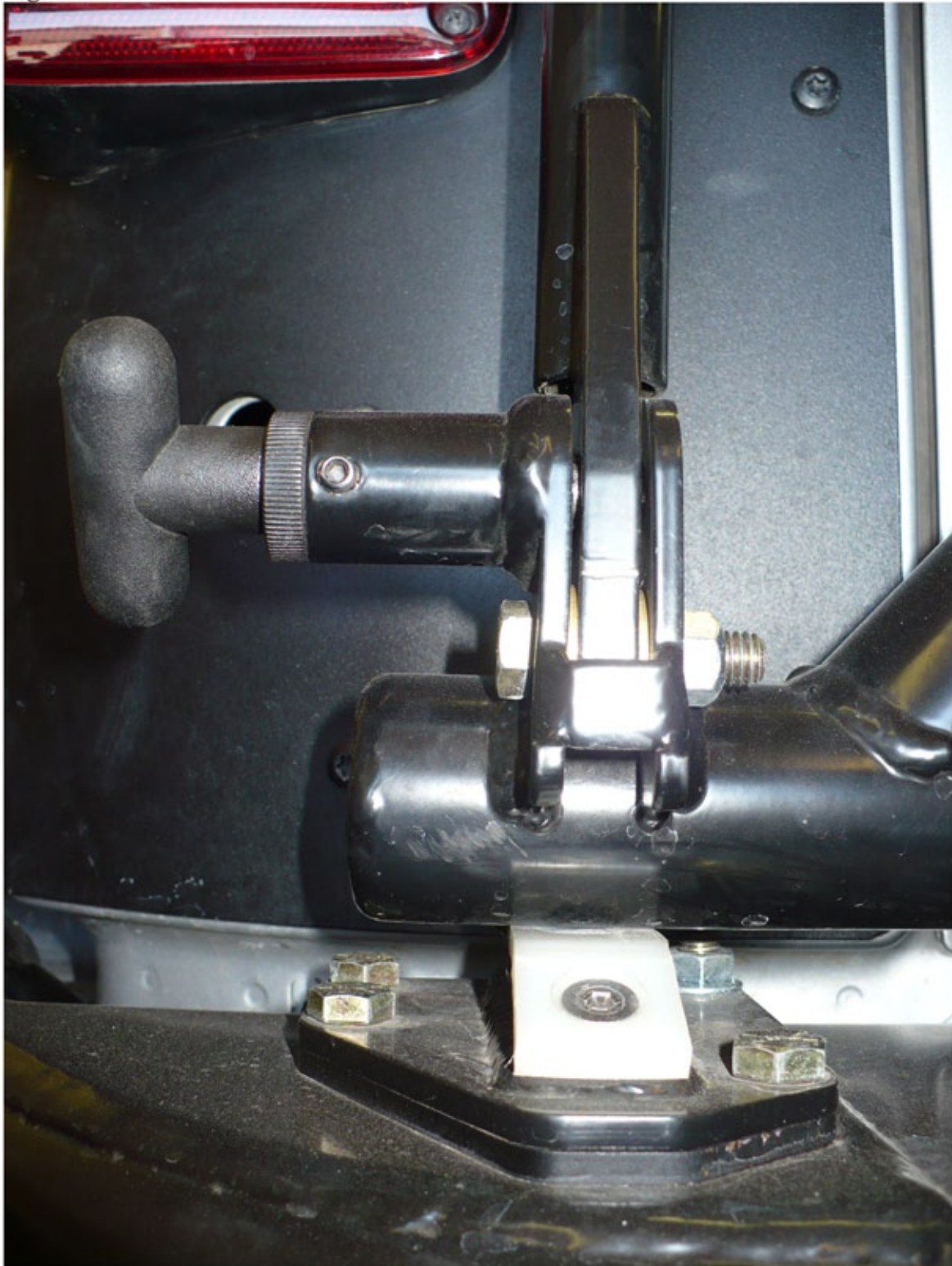
14. With the new bumper installed and the stock spare tire mount removed; you can begin the installation of the spare tire carrier.
15. Remove the tire carrier from the wrapping and the nut and washer on the tapered trailer spindle.
16. Insert the tapered spindle into the receiving hole on the bumper, install the large zinc plated washer and castle nut. Torque the nut to 75 ft-lbs and install the cotter pin to ensure the nut will not come loose. See Figure 7

Figure 7



17. The trailer spindle bearings are pre lubed and torqued, you should not have to adjust the spindle bearing pre-load.
18. Swing the tire carrier to the open position and allow the pill pin to lock in place.
19. Retrieve the latch mount, shims, handle and hardware kit.
20. Bolt the latch handle to the latch mount. Use the two brass washers on either side on the handle, use the 3/8" x 1.5 bolt and one top lock nut. The tightness of this bolt determines how loose or tight the latch handle is. Tighten so the handle moves freely but has no side to side play.
21. Install the pull pin, grease the spring and shaft before inserting it into the housing. Screw the pin into the housing and tighten lightly with a set of channel locks. Install the small set screw and tighten with a 3mm allen wrench.
22. Install the latch handle assembly onto the bumper using the 3/8" x 1" bolts, washers and top lock nuts as pictured in Figure 7, torque to 30 ft-lbs. Use latch shims under the latch mounting surface for the following spare tire sizes:
 - 3/16" and 1/4" Shim for 35" tires
 - 1/4" Shim for 37" tires
 - No Shim for 40" tires
 - Shims may need to be added or removed depending on combined tire/wheel weight.
23. Completely install the latch assembly onto the bumper as shown in Figure 8. The rear, inside bolt will need to go through the bottom on the bumper to clear the bumpstop on the latch assembly.

Figure 8



24. Install the spare tire mounting bracket to the top of the swing out mount using the four 1/2" x 1" bolts, washers and lock nuts. This can usually be installed in the position that brings the tire closest to the body. Torque the 1/2" bolts to 50 ft-lbs.

25. If you purchased the optional third brake light, install the light onto the tire mounting bracket and wire the light into your brake light system.
26. Install your spare tire into the three mounting studs using the original spare tie lug nuts. Torque the lug nuts to 75 ft-lbs.
27. Now swing the spare tire carrier closed. Check to be sure that the bottom of the carrier tube lightly contacts the plastic slider on the latch handle. If the carrier does not contact the plastic on the latch, you may need to install another shim under the latch in order for the latch to operate properly.