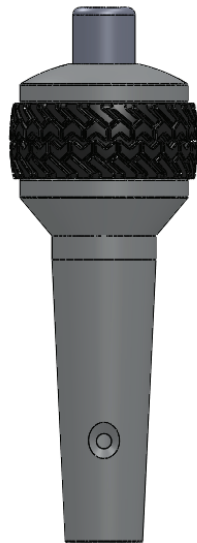


## JEEP AUTOMATIC SHIFT KNOB (JK) INSTALLATION INSTRUCTIONS:



1. USE A FLAT HEAD SCREWDRIVER OR PUNCH AND KNOCK COLLAR OFF LOWER PORTION OF ORIGINAL SHIFT KNOB. SLIDE COLLAR DOWN AND REMOVE TORX BOLT. REMOVE ORIGINAL SHIFT KNOB.

2. SLIDE DRAKE SHIFT KNOB ONTO SHAFT AND INSTALL, USING ORIGINAL REMOVED SCREW.



JP-180013-BL