

**KIT INCLUDES** (Before starting, check that your kit includes everything listed below)

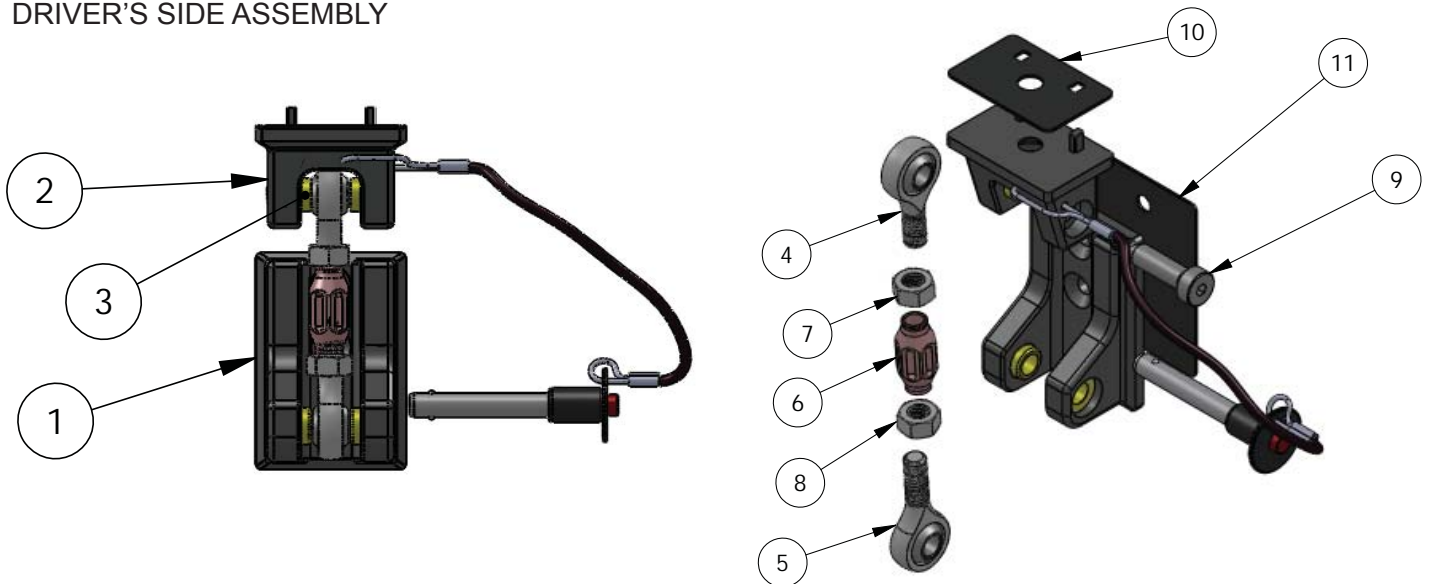
Hardware	QTY
M6-1.0 X 16MM STAINLESS STEEL FLAT HEAD ALLEN SCREW	4
M6-1.0 NYLOC NUT	4
M6 FLAT WASHER	4
M8-1.25 X 16MM STAINLESS STEEL FLAT HEAD ALLEN SCREW	2
M8-1.25 NYLOC NUT	2
M8 FLAT WASHER	2

Assemblies	QTY
1. UPPER SUB-ASSY, JEEP TJ HOOD HOLD DOWN	2
2. LOWER BRACKET SUB ASSY. TJ HOOD HOLD DOWN	2
3. SPACER, BOLT END JEEP HOOD HOLD DOWN	4
4. M8 HEIM JOINT W/ M8-1.25 RH THREAD	2
5. M8 HEIM JOINT W/ M8-1.25 LH THREAD	2
6. ADJUSTMENT SLEEVE, 30MM HEX	2
7. M8-1.25 RH JAM NUT	2
8. M8-1.25 LH JAM NUT	2
9. SHOULDER BOLT, M6-1.0	2
10. NEOPRENE GASKET, LOWER BRACKET	2
11. NEOPRENE GASKET, UPPER BRACKET	2

**TOOLS NEEDED FOR INSTALLATION**

- 5mm allen wrench
- 4mm allen wrench
- ¼" drive ratchet and socket set with 10mm, 13mm, and 15mm sockets

DRIVER'S SIDE ASSEMBLY

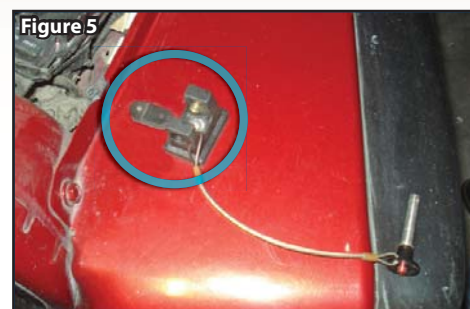
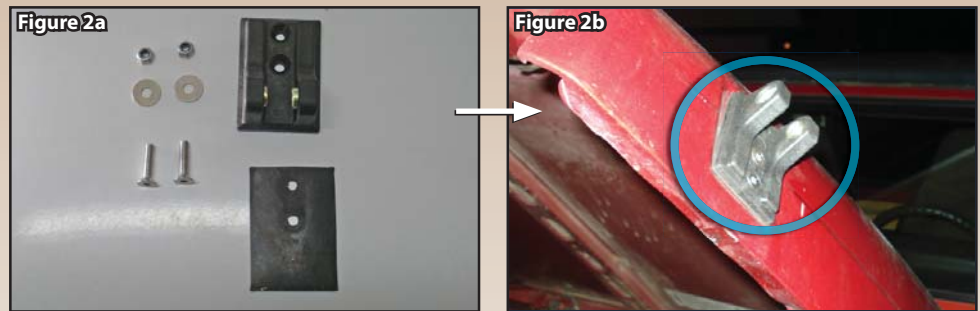
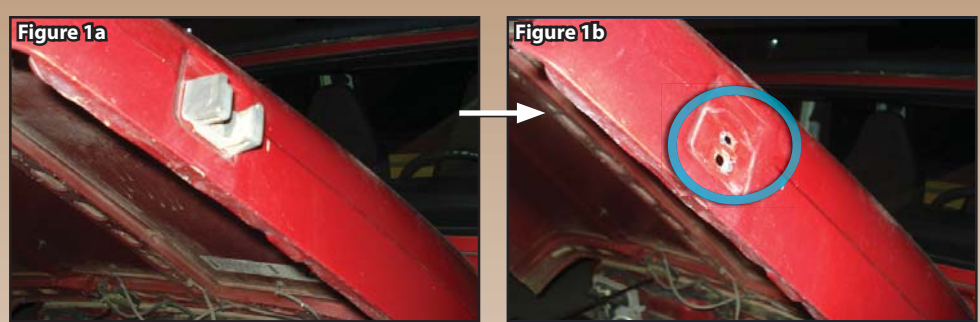


1997-06 Jeep TJ

**Hood Hold Down Installation**

1. Open Hood
2. Using 10mm socket with ratchet, remove two nuts securing stock hood latch to hood. Remove hood brackets from both sides of vehicle. **(Figure 1a & 1b)**
3. Using 4mm allen wrench and 10mm socket with ratchet, install Drake Off Road Hood brackets on both sides of hood. Orientate bracket so that the bushings are towards the top half of the bracket when installed. Place rubber pad between hood and bracket and secure using M6 flat head screw, flat washer, and nut provided with kit. **(Figure 2a & 2b)**
4. Using a 15mm socket and ratchet remove original lower half of hood hold down brackets from both front fenders. Do not remove rubber bumper on fender. **(Figure 3)**
5. Using a 4mm allen wrench remove billet turn buckle from Drake Off Road Fender Bracket. Be careful not to lose 2 small bushings. **(Figure 4)**
6. Using a 5mm allen wrench and 13mm socket with ratchet install Drake Off Road fender bracket to fender using M8 flat head bolt, washer and nut provided. Make sure to place rubber pad between bracket and fender. **(Figure 5)**

*Note: There is a difference between the two brackets, decide if you want the bolt head facing forward or reverse and if you want the lanyard facing forward or reverse and install the brackets accordingly side to side. We install them with the lanyard facing forward on the vehicle but this will not affect the performance and is purely a personal choice.*



7. Install turn buckle back into bracket using 4mm allen wrench and bolt removed previously. Make sure to slide a spacer on both sides of the heim joint. **(Figure 6)**
8. Finish any previous steps on both sides of vehicle and make sure turn buckle is flipped outwards and resting on fender as shown above. Close Jeep hood.

**ALWAYS MAKE SURE TURNBUCKLES ARE FLIPPED OUTWARD BEFORE CLOSING HOOD TO AVOID DAMAGE!**

9. Line up turnbuckle and install quick release pin. Direction of the quick release pin is user preference and it can be installed from the front or the back. **(Figure 7)**

#### Setup

1. Make sure jam nuts are threaded all the way against the heim joints as shown above.
2. Gently apply downward pressure to hood while turning billet aluminum turnbuckle to adjust hood down until it contacts the rubber pad. Adjustment is set to personal preference but we've found that spinning the turnbuckle until the quick release pin is almost difficult to pull out works best. With it adjusted to this tension we are able to gently push down on the hood to relieve the pressure on the pin and pull it out at the same time.
3. Once adjusted to your preferred tension use two 13mm wrenches to tighten jam nuts on turnbuckle against the billet aluminum center piece. Once adjusted properly you should not need to use turnbuckle to open and close your hood.

