

TJ Header Windshield Channel

Installation Instructions 1997 - 2002

Part Number : 13308.03 (MS-200301)

Do not install on any vehicle other than those listed above.

Parts List:

- (2) J-hook Brackets
- (2) J-hook Bases
- (2) Flat Washers
- (4) Allen head screws
- (4) Lock Washers
- (2) Bolts
- (1) Windshield header
- (1) 1/8" Allen Wrench



WARNING

This product is designed to enhance the look of the vehicle. Do not rely on the components of this product to contain passengers or cargo within the vehicle, or to protect against injury or death in an accident.

WEAR SEAT BELTS AT ALL TIMES.

Read and follow all installation instructions provided when installing this product. Failure to follow the supplied instructions could place driver and passengers in potential danger. After installing or reinstalling, double check with installation instructions to make sure all steps have been properly followed.

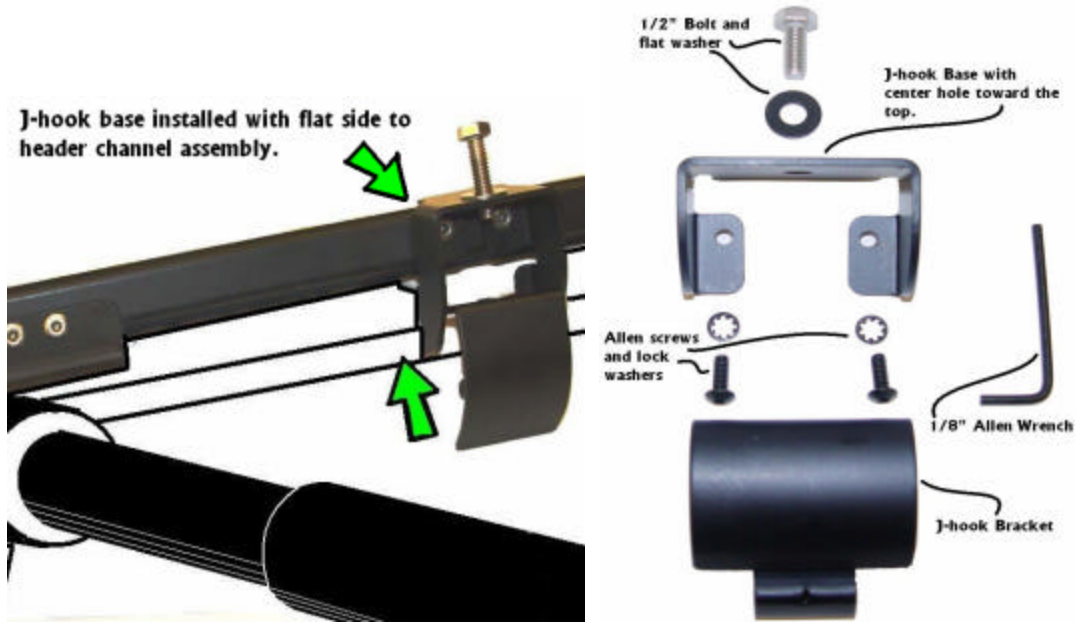
Installation

Tools needed: 1/2" Wrench (not included)

Step 1.

Install Windshield Retainer


Locate and familiarize yourself with the enclosed hardware components. Use the Allen head screws lock washers to install the J-hook base to the flat side of header channel assembly, with center hole of the base toward the top.



Step 2.

Locate the J-hook bracket and with the hook facing the front of the vehicle and threaded inserts facing the top. Slide the bracket into the base, catching the hook into the slot in the windshield. Attach each bracket to its base with a bolt and washer.

Note: While installing the windshield retainer/J-Hook bracket assembly, apply **FIRM** pressure towards the front of the vehicle to make sure that the assembly is installed correctly.



Caution

Safety glasses should be worn at all times while installing this product.