

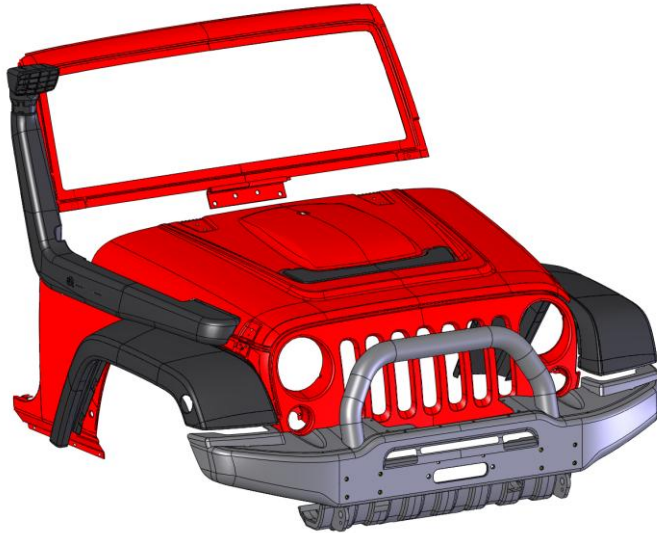


AMERICAN EXPEDITION
VEHICLES

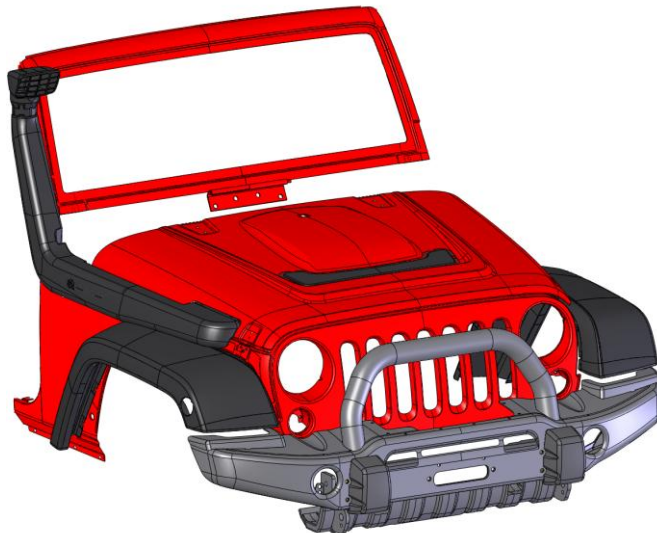
AEV JK FRONT BUMPER

Part Numbers: 10305050AA / 10305055AA

Also Covers Part Numbers: 10305060AA, 10303005AA, 10305061AA, 10305062AA, 10305063AA



MILSPEC FRONT BUMPER



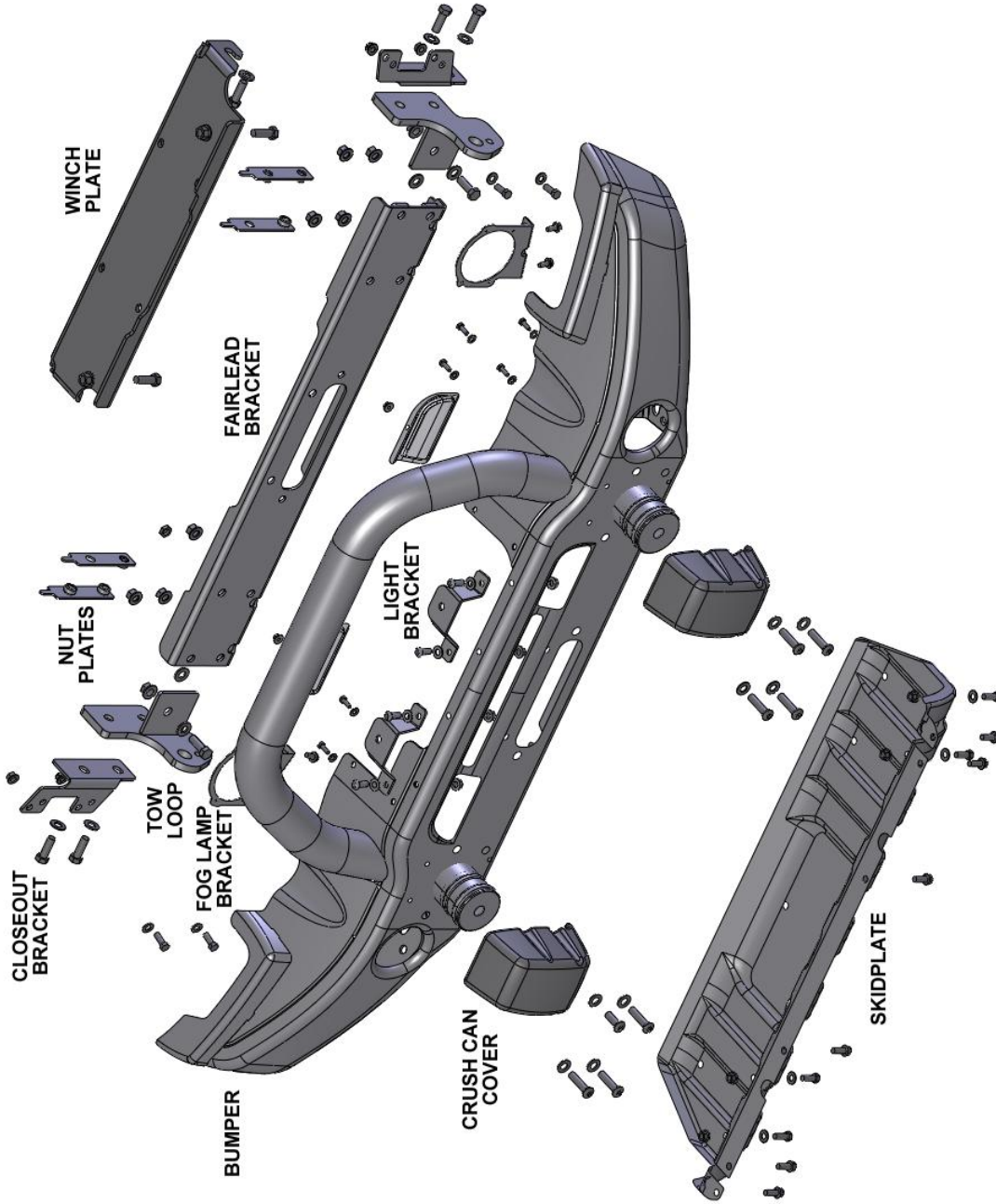
PREMIUM FRONT BUMPER

Installation Guide

(Updated 01/19/10)



AMERICAN EXPEDITION
VEHICLES



MASTER EXPLODED VIEW



PLEASE READ BEFORE YOU START

IN ORDER TO INSTALL THIS PART PROPERLY YOU OR YOUR INSTALLER MUST READ THESE INSTRUCTIONS THOROUGHLY BEFORE BEGINNING THE INSTALLATION. FAILURE TO DO SO MAY RESULT IN MISTAKES AND AFFECT THE QUALITY OF THE FINISHED PRODUCT.

Included Parts	QTY	Required Tools
MILSPEC FRONT BUMPER KIT		Common Hand Tools
FRONT BUMPER	1	Drill Motor
FAIRLEAD BRACKET	1	Drill Bits
CLOSEOUT BRACKETS	2	Transfer or Center Punch
MASTER HARDWARE PACK	1	Cut Off Wheel (2010+ ONLY)
		Touch Up Paint or Rust Inhibitor
		File or De-burring Tool
PREMIUM FRONT BUMPER KIT		
PREMIUM FRONT BUMPER	1	
FAIRLEAD BRACKET	1	
CLOSEOUT BRACKETS	2	
FOG LIGHT BRACKETS	2	
TOW LOOP BRACKETS	2	
STAINLESS STEEL MESH	2	
CRUSH CAN COVERS	2	
MASTER HARDWARE PACK	1	
WINCH MOUNT KIT		
WINCH MOUNT PLATE	1	
HARDWARE PACK	1	
SKID PLATE KIT		
SKID PLATE	1	
HARDWARE PACK	1	
LIGHT MOUNT KIT		
LIGHT MOUNT BRACKETS	2	
HARDWARE PACK	1	
STAINLESS STEEL MESH KIT		
STAINLESS STEEL MESH	2	
HARDWARE PACK	1	



REMOVAL OF THE FACTORY COMPONENTS

A. REMOVAL OF THE FACTORY AIR DAM

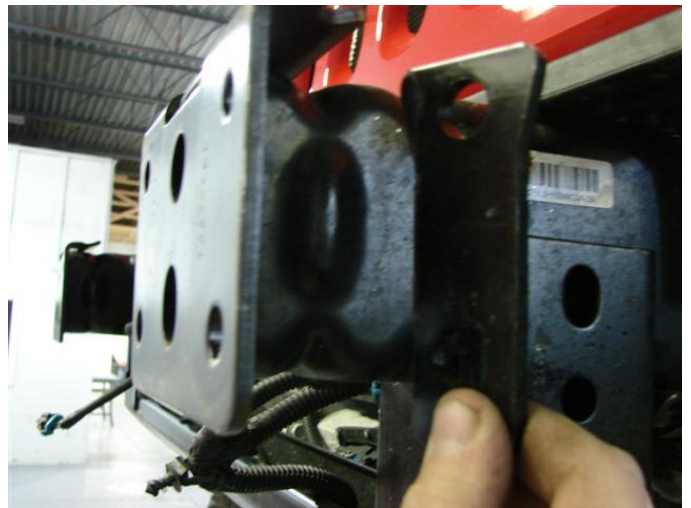
1. Remove the “Scrivet” fasteners at the front and back side of the air dam. Use a Phillips screwdriver to back out the plastic pin and pull out the fastener. The pin will tend to spin. Use a flat screwdriver under the base of the fastener to apply pressure as you turn the screw.





B. REMOVAL OF THE FRONT BUMPER

1. If you have fog lights disconnect the wiring
2. Remove the 8 nuts attaching the bumper to the frame rails
3. Remove the plastic closeout panel in front of the grille.
4. Remove steel backing plates from inside frame rail

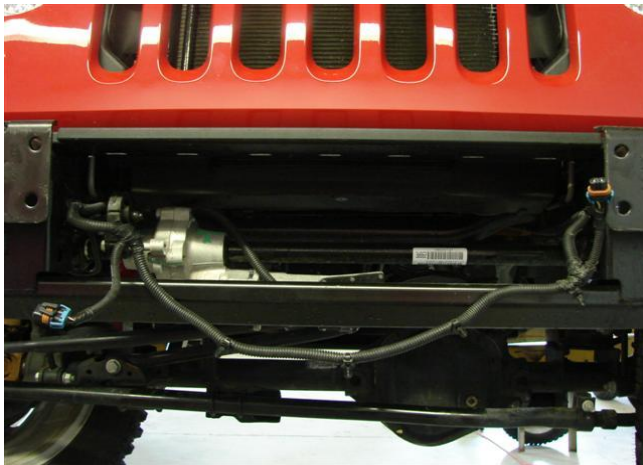




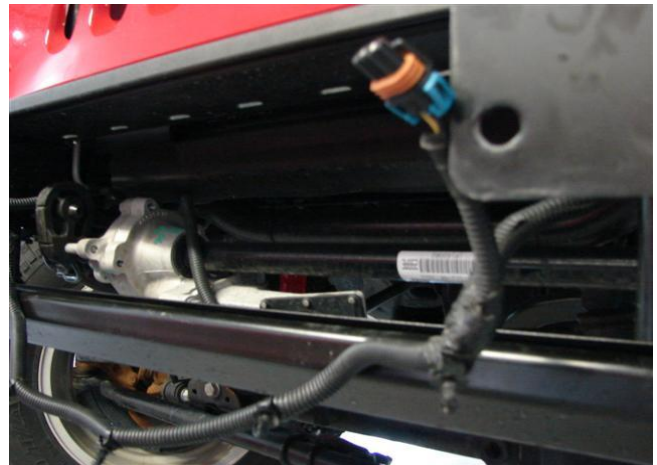
VEHICLE PREPERATION

A. MODIFY FOG LIGHT WIRING FOR PREMIUM BUMPER ONLY (NOTE: 2007-2009 USA, CANADA, AND MEXICO MODELS ONLY)

1. The fog lights are mounted further apart than factory, so the wiring harness needs to be re-positioned. This is accomplished by removing the factory conduit and re-routing the harness above the frame rails. **BE CAREFUL NOT TO CUT THE HARNESS!**
2. Remove the tape from the wire harness at both ends to expose the loose length of wires
3. Extend the harness outboard as much as possible to reach the new fog light location
4. Replace the conduit, if it has been removed, and re-tape the modified harness
5. Route the harness along the bottom of the grille and fasten to power steering line using cable ties



ORIGINAL WIRING POSITION



REMOVE TAPE



B. MODIFY FOG LIGHT WIRING FOR PREMIUM BUMPER ONLY (NOTE: 2010+ USA, CANADA, AND MEXICO MODELS ONLY)



NEW HARNESS LENGTH



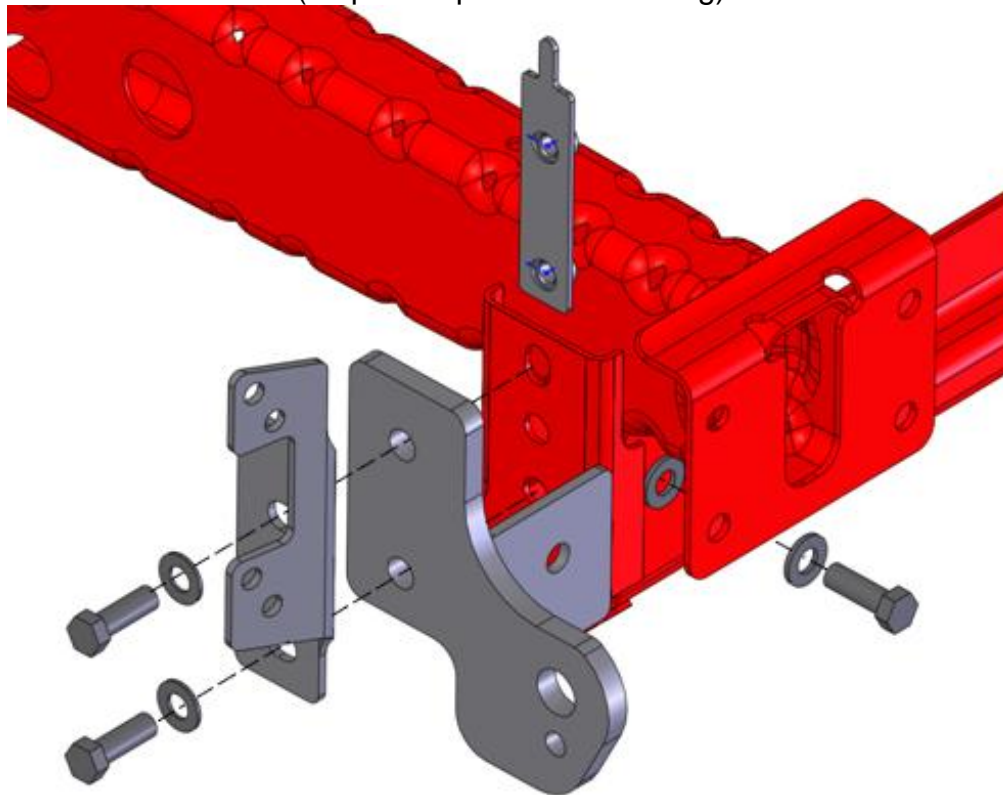
FASTEN TO POWER STEERING LINE

1. Remove the tape from the wire harness on the right side only to expose the loose length of wire. Should have approximately 7"
2. Replace the conduit, if it has been removed, and re-tape the modified harness
3. Route the harness along the bottom of the grille and fasten to the power steering line using cable ties



A. TOW LOOP BRACKET INSTALLATION

(Skip to step B if not installing)

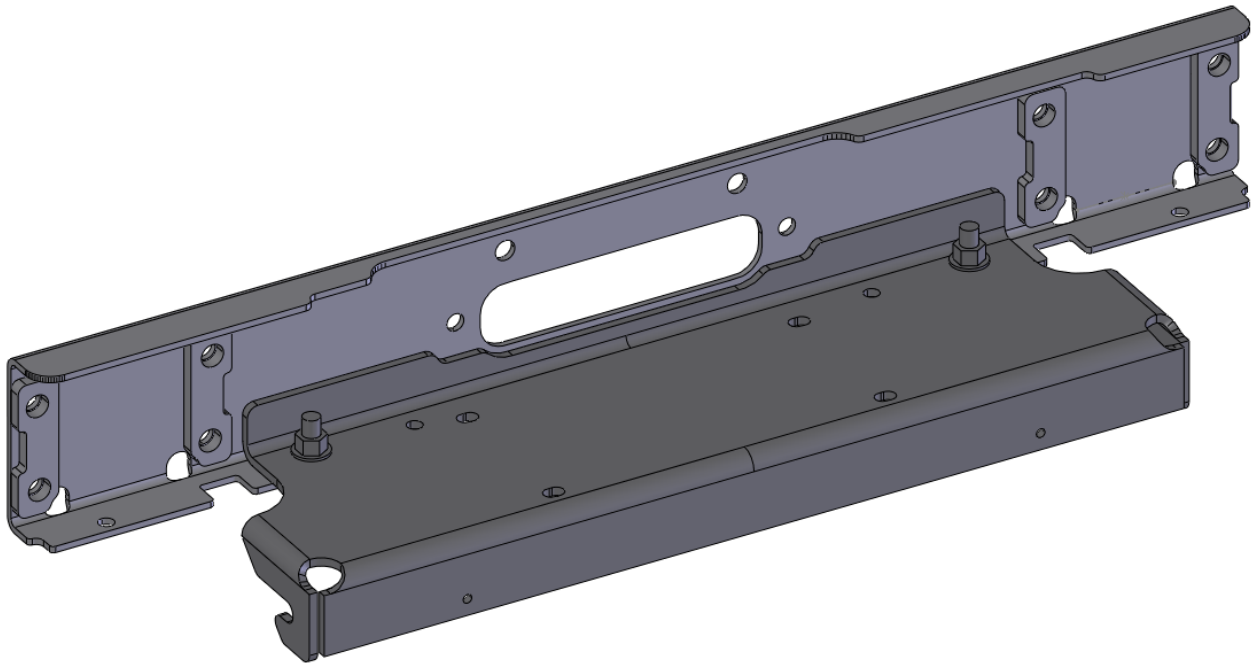


1. Place tow loop bracket on the vehicle frame
2. Slide the nut plate into the frame and install the bottom side 1/2" hex head bolt to align tow loop
3. Make sure the tow loop bracket is flush with the frame then using a transfer or center punch mark the location on the frame for the front attachment point
4. Remove the tow loop and drill with a 1/2" drill bit where marked. It helps to drill a 1/8" pilot hole first
5. De-burr the drilled hole and paint with a corrosion inhibitor or touch up paint
6. Place the tow loop bracket back into place and install 1/2" x 1 1/2" hex head bolt with washer into the front attachment point
7. You will also need to place a 1/2" washer between the tow loop bracket and frame at this point to ensure a flat mounting surface
8. Install the closeout bracket to the tow hook using 1/2" x 1 1/2" hex head bolts with washers and nut plate. Leave loose so there is some adjustment for bumper installation
9. Repeat steps 1 thru 8 on other side

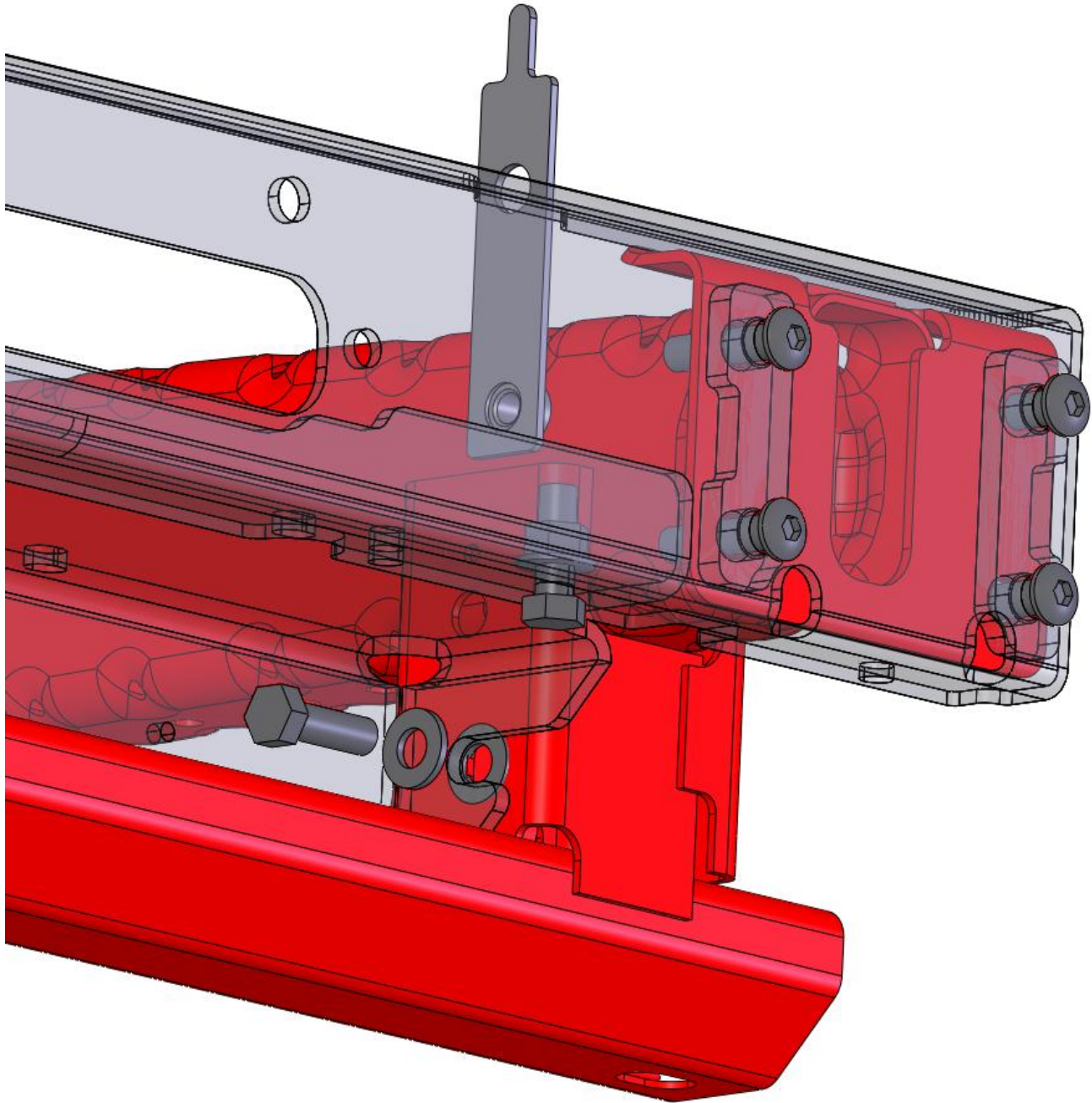


B. WINCH PLATE INSTALLATION

(Skip to step C if not installing)



1. Assemble the winch plate and fairlead brackets together. Use 1/2" x 1 1/2" hex head bolts and flange nuts going from the bottom up(washer not needed)
2. Place the winch mount assembly into position onto the frame
3. Insert the (8) 1/2" button head bolts through the front mounting holes to align
4. With the winch mount aligned, bolt the winch mount to the lower frame attachment points using 1/2" x 1 1/2" hex head bolts, washers, and nut plate
5. **There might be a gap between the winch mount and frame due to frame variations. Use the supplied 1/2" washers to fill the gap on either side**
6. Remove the (8) button head bolts
7. Install the square nuts that come with the winch kit into the winch and feet. A little silicone is helpful to hold them in place.
8. Place the winch onto the winch mount. Do not install winch mounting bolts at this time

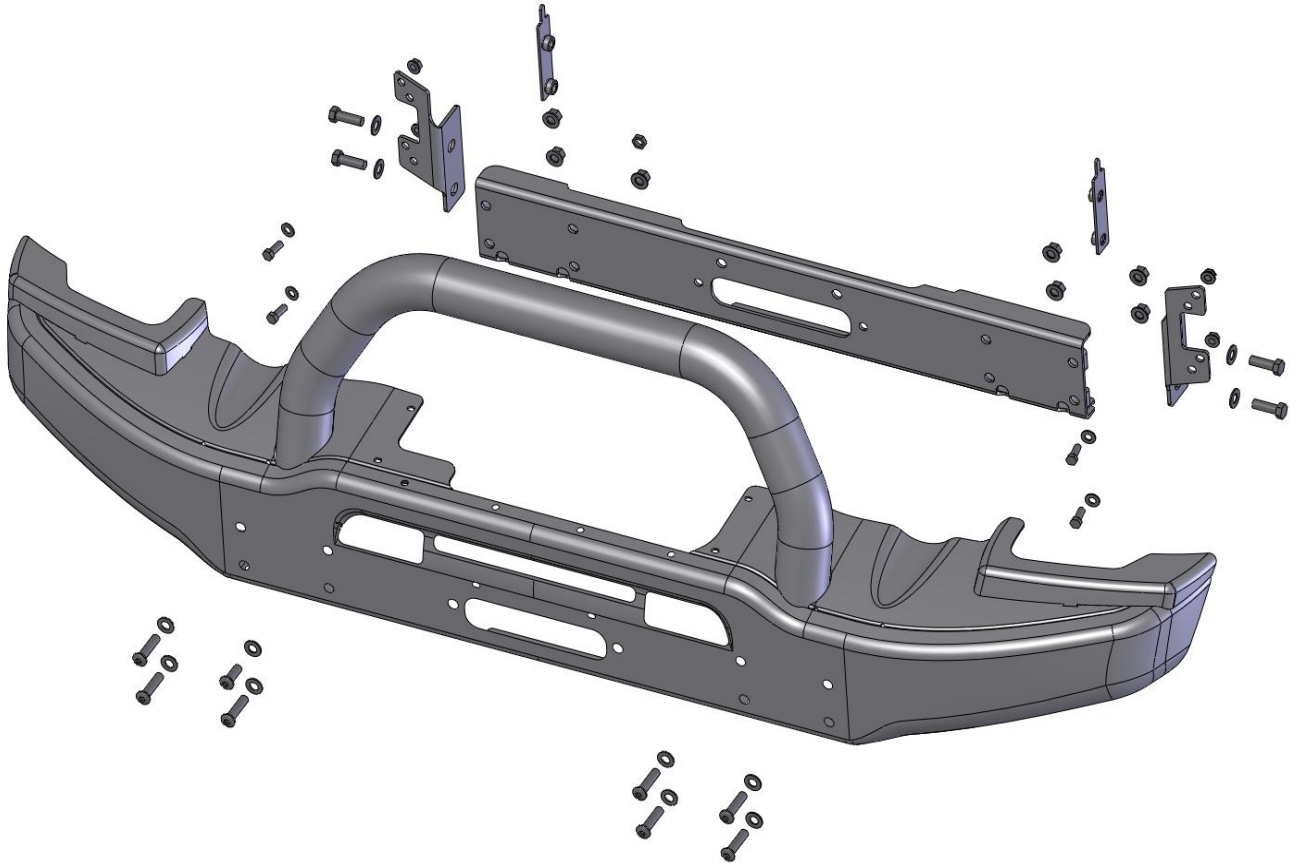


WINCH MOUNT INSTALLATION



C. MILSPEC BUMPER INSTALLATION

(Skip to step D if not installing)



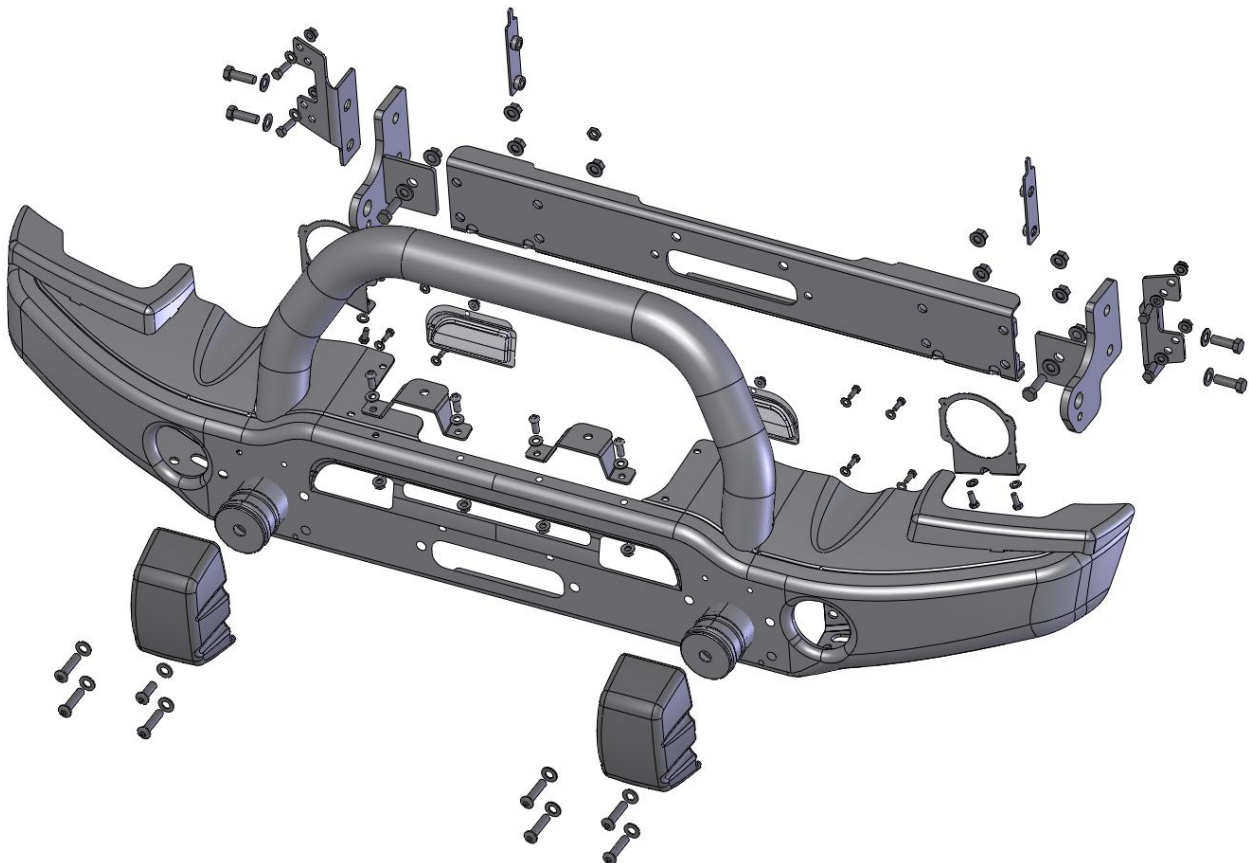
1. Secure the loose ends of the fog light wiring harness to itself with cable ties making sure it is out of the way for the bumper installation
2. If you are not installing the winch plate temporarily attach the fairlead bracket to the bumper. Attach through the center set of holes used for mounting a roller/hawse fairlead with two of the supplied 1/2" hex head bolts and flange nuts
3. If you are not installing tow loop brackets install the closeout brackets to the frame. Slide the nut plate into the frame. Use a 1/2" x 1" hex bolt at the top and a 1/2" x 1 1/2" hex bolt at the bottom with washers. Leave the brackets loose enough for some adjustment to help in bumper installation
4. Using the assistance of a helper carefully set the bumper on the vehicle. **BE CAREFUL NOT TO SCRATCH THE GRILLE OR PLASTIC FENDER FLARES**
5. Insert the (8) 1/2" button head fasteners with washers through the bumper, fairlead bracket, and frame rails
6. **NOTE: THE SHORT 1/2" BUTTON HEAD BOLT SHOULD BE USED IN THE RIGHT SIDE UPPER MOST INNER LOCATION. USING A LONG BOLT HERE WOULD INTERFERE WITH THE WINCH MOTOR**



AMERICAN EXPEDITION
VEHICLES

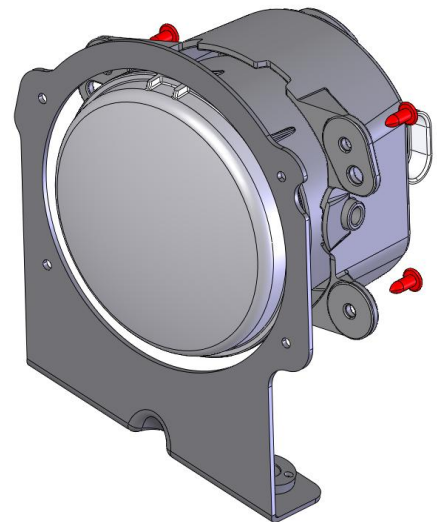
7. While holding the bumper in place use the 1/2" flange nuts in all locations except on the short 1/2" button head bolt, which uses a thin Nylock nut. Tighten the (8) button head fasteners enough to allow alignment
8. Remove the two bolts temporarily holding the fairlead bracket to the bumper if the winch plate was not installed
9. Loosely attach the closeout brackets to the backside of the bumper with 3/8" hex head bolts, washers, and flange nuts. The bolts should be installed from the inside of the bumper out
10. Adjust the bumper to line up with the fairlead bracket and slowly tighten the (8) button head fasteners making sure the bumper is vertical and flat against the fairlead bracket
11. After the face bolts are tight you can tighten the 3/8" fasteners
12. Tighten the 1/2" bolts to fasten the closeout brackets to the frame
13. If you are installing a winch attach the fairlead before installing winch bolts. The bolts supplied by the winch manufacturer for the fairlead should go from inside the bumper out
14. Attach the winch to winch mount using fasteners supplied by winch manufacturer

D. PREMIUM BUMPER INSTALLATION





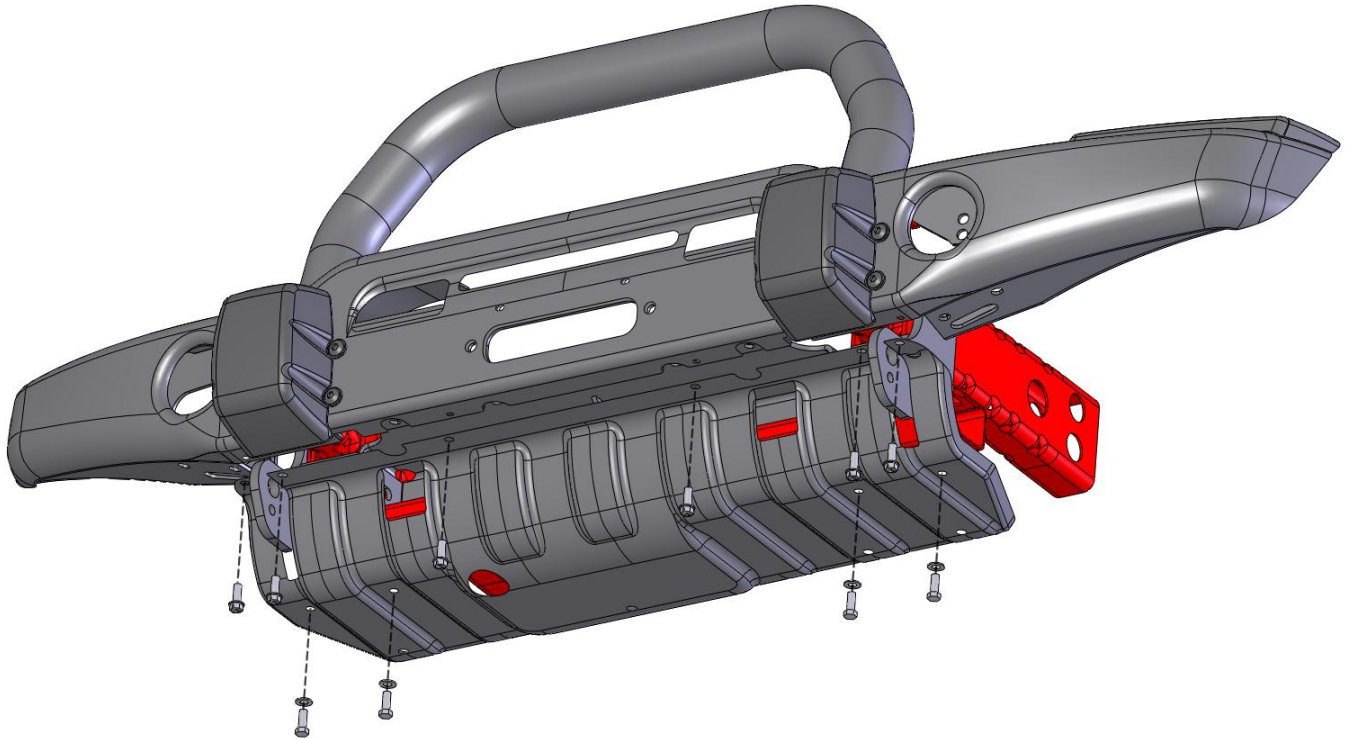
1. Install the mesh into the bumper over the studs and tighten M6 flange nuts
2. Install the crush can covers with 1/4" hex head bolts with washers
3. If you are not installing the winch plate temporarily attach the fairlead bracket to the bumper. Attach through the center set of holes used for mounting a roller/hawse fairlead with two of the supplied 1/2" hex head bolts and flange nuts
4. Install the light mount brackets with 3/8" button head bolts, washers, and nuts
5. Using the assistance of a helper carefully set the bumper on the vehicle. **BE CAREFUL NOT TO SCRATCH THE GRILLE, PLASTIC FENDER FLARES, OR WINCH**
6. Insert the (8) 1/2" button head fasteners with washers through the bumper, fairlead bracket, and frame rails
7. **NOTE: THE SHORT 1/2" BUTTON HEAD BOLT SHOULD BE USED IN THE RIGHT SIDE UPPER MOST INNER LOCATION. USING A LONG BOLT HERE WOULD INTERFERE WITH THE WINCH MOTOR**
8. While holding the bumper in place use the 1/2" flange nuts in all locations except on the short 1/2" button head bolt, which uses a thin Nylock nut. Tighten the (8) button head fasteners enough to allow alignment
9. Remove the two bolts temporarily holding the fairlead bracket to the bumper if the winch plate was not installed
10. Loosely attach the closeout brackets to the backside of the bumper with 3/8" hex head bolts, washers, and flange nuts. The bolts should be installed from the inside of the bumper out
11. Adjust the bumper to line up with the fairlead bracket and slowly tighten the (8) button head fasteners making sure the bumper is vertical and flat against the fairlead bracket
12. After the face bolts are tight you can tighten the 3/8" fasteners
13. Tighten the 1/2" bolts to fasten the closeout brackets to the frame
14. Remove the fog lights from the factory bumper. Install them into the supplied brackets keeping them in the same orientation as factory and re-use the factory screws. Install on the bumper using 5/16" button head bolts and washers. Adjust to line up with the openings in the front face of the bumper
15. Re-attach the fog light wiring
16. If you are installing a winch attach the fairlead before installing winch bolts. The bolts supplied by the winch manufacturer for the fairlead should go from inside the bumper out
17. Attach winch to winch mount using fasteners supplied by the winch manufacturer



FOG LIGHT WITH BRACKET



A. SKID PLATE INSTALLATION

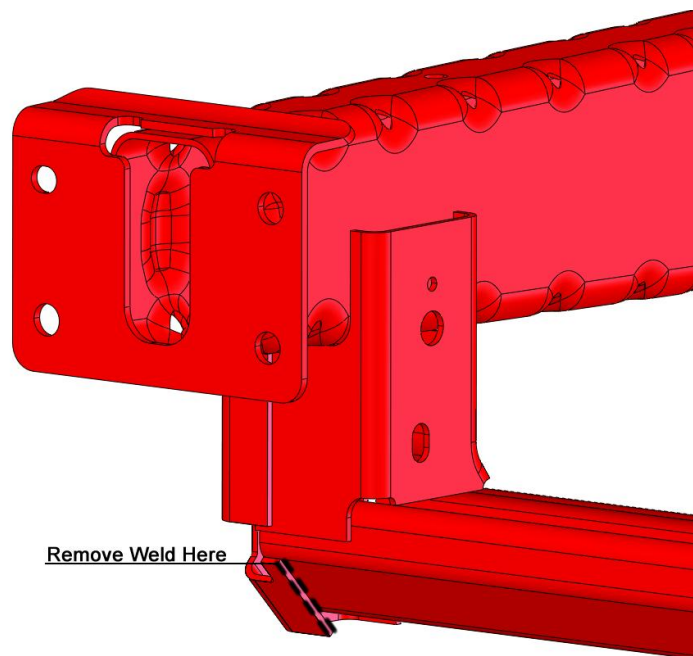
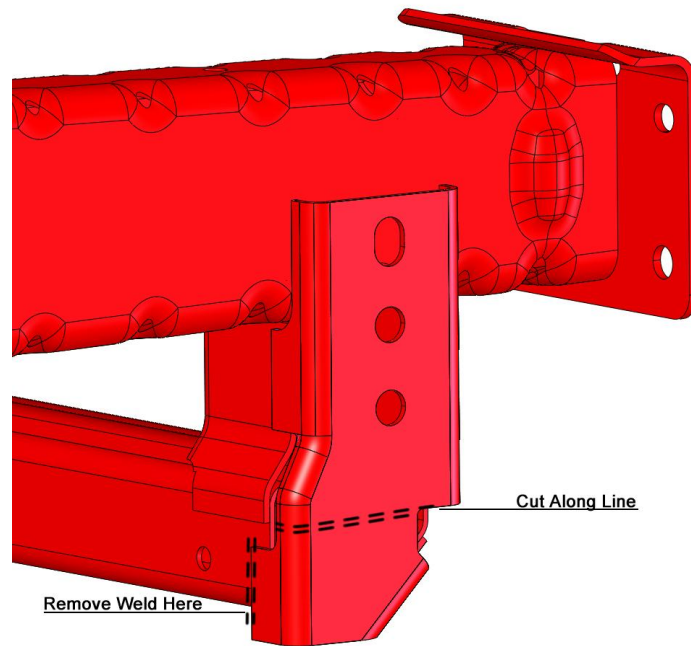


1. Hold skid plate in position under bumper
2. Insert two self threading hex head bolts into outer mounting holes
3. Start threading bolts into position and snug. Do not tighten at this time
4. Insert two self threading hex head bolts into the inner mounting holes under bumper
5. While holding skid plate up tightly against the compatibility beam, mark the 4 rear mounting holes and center punch
6. **NOTE: LATE 2009 AND 2010+ MODELS LOSE THE OUTER ATTACHMENT POINTS IN STEP #5**
7. Remove skid plate
8. Drill holes marked in #5 using a 3/8 inch drill bit
9. De-burr and treat holes with rust inhibitor or touch up paint
10. Re-install skid plate
11. Re-install the 6 self threading bolts in the front mounting holes
12. Use (4) 3/8 inch bolts, flat washers, and flange nuts in the rear mounting location
13. Torque all bolts



B. 2010+ ONLY – COMPATIBILITY BEAM MODIFICATIONS

1. 2010 Models must have the compatibility beam modified to clear the skidplate and to provide access for the fasteners. Use a cutoff wheel to trim the beam as shown.
2. Clean the modification and paint with a rust inhibitor or touch up paint



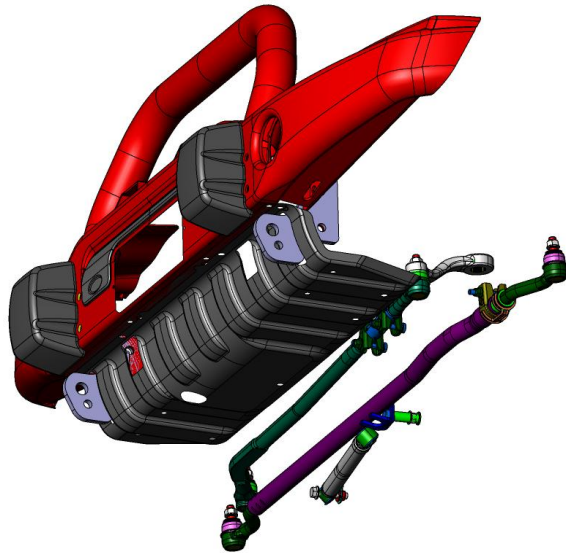
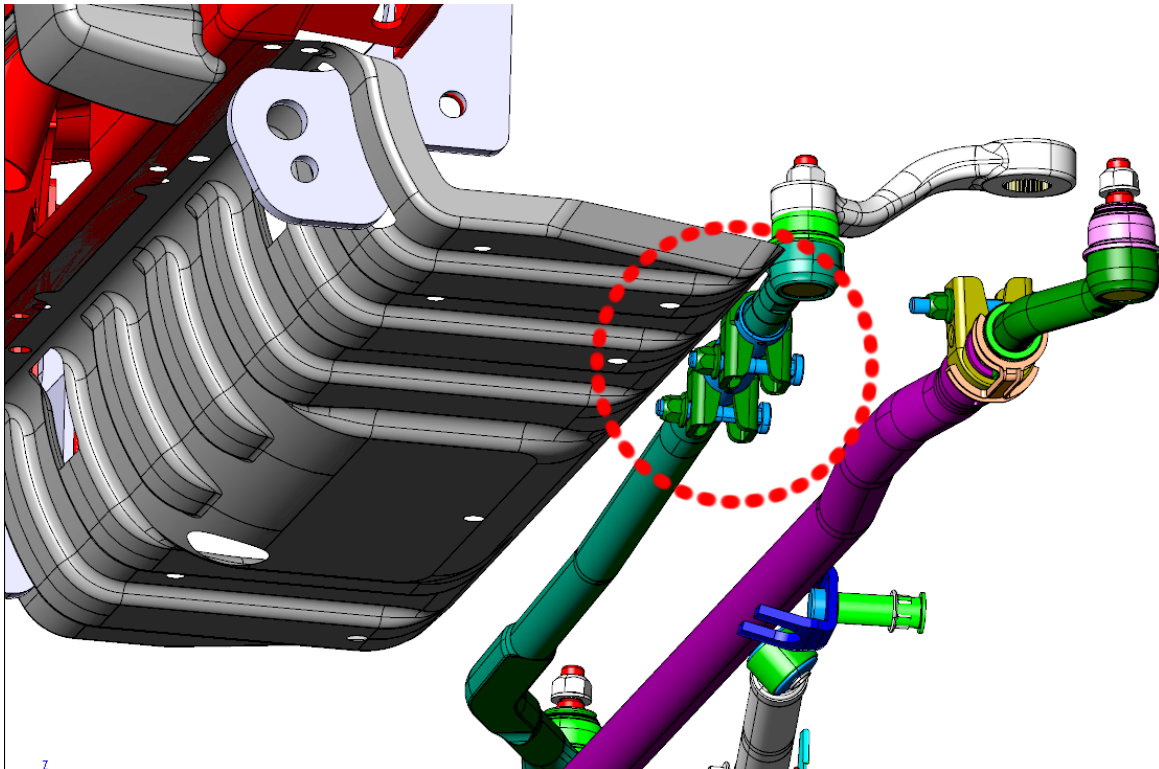


IMAGE ENLARGED BELOW



- WARNING -

Check for clearance between drag link adjuster clamps and skid plate. Place bolts vertical and rearward.



A M E R I C A N E X P E D I T I O N
V E H I C L E S

COMMENTS OR QUESTIONS?

Be sure to visit our forum at: <http://forum.aev-conversions.com>

American Expedition Vehicles

Phone: 406.251.2100

Email: tech@aev-conversions.com

Website: <http://www.aev-conversions.com>